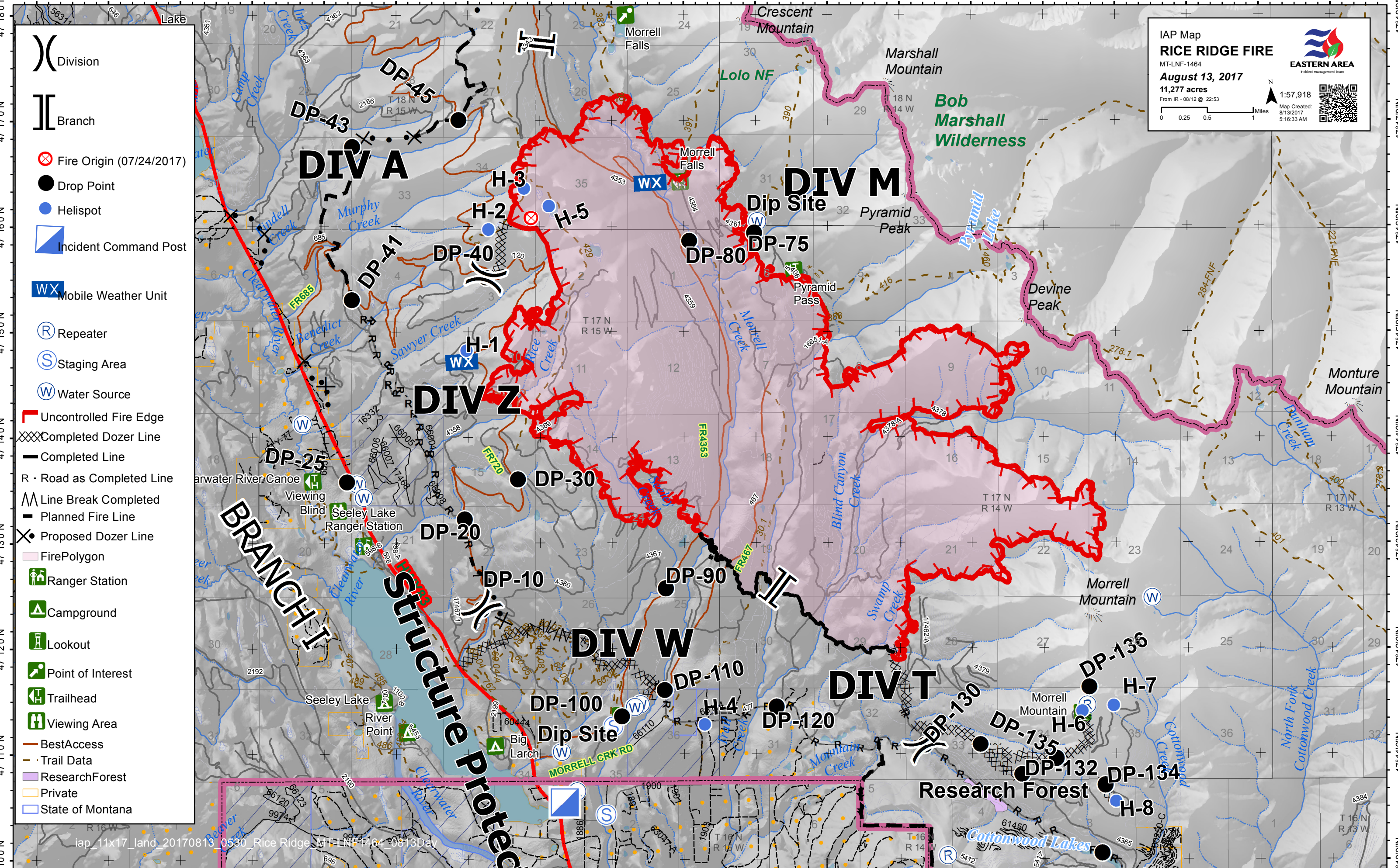


113°36'0"W 113°35'0"W 113°34'0"W 113°33'0"W 113°32'0"W 113°31'0"W 113°30'0"W 113°29'0"W 113°28'0"W 113°27'0"W 113°26'0"W 113°25'0"W 113°24'0"W 113°23'0"W 113°22'0"W 113°21'0"W 113°20'0"W 113°19'0"W 113°18'0"W



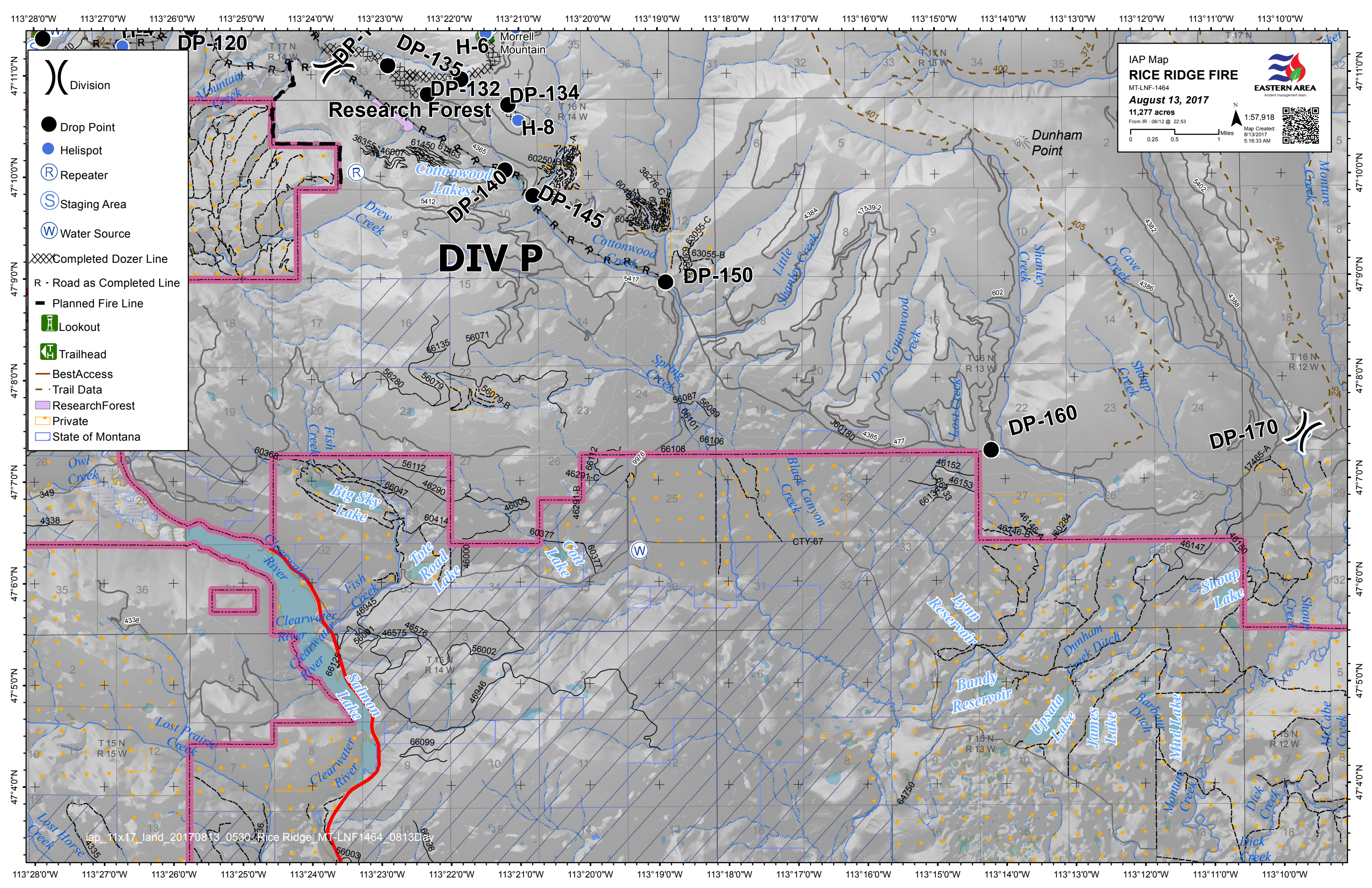
- () Division
- [] Branch
- ⊗ Fire Origin (07/24/2017)
- Drop Point
- Helispot
- ▢ Incident Command Post
- WX Mobile Weather Unit
- Ⓡ Repeater
- Ⓢ Staging Area
- Ⓜ Water Source
- Uncontrolled Fire Edge
- XXX Completed Dozer Line
- Completed Line
- R - Road as Completed Line
- ^ Line Break Completed
- Planned Fire Line
- ⊗ Proposed Dozer Line
- FirePolygon
- 🏠 Ranger Station
- 🏕 Campground
- 👁 Lookout
- 📍 Point of Interest
- 🚰 Trailhead
- 👁 Viewing Area
- BestAccess
- - - Trail Data
- ResearchForest
- Private
- State of Montana

IAP Map
RICE RIDGE FIRE
MT-LNF-1464
August 13, 2017
11,277 acres
From IR - 08/12 @ 22:53

EASTERN AREA
Incident management team

1:57,918
Map Created:
8/13/2017
5:16:33 AM

iap_11x17_land_20170813_0530_Rice Ridge MT-LNF-1464_0813Day



Legend

- () Division
- Drop Point
- Helispot
- Ⓡ Repeater
- Ⓢ Staging Area
- Ⓦ Water Source
- XXXX Completed Dozer Line
- R - Road as Completed Line
- Planned Fire Line
- 🏠 Lookout
- 🏠 Trailhead
- Best Access
- Trail Data
- 🌲 Research Forest
- 🏠 Private
- 🇺🇸 State of Montana

IAP Map
RICE RIDGE FIRE
MT-LNF-1464
August 13, 2017
11,277 acres
From IR - 08/12 @ 22:53

EASTERN AREA
Incident management team

1:57,918
Map Created: 8/13/2017 5:16:33 AM