

Rice Ridge Fire

MT-LNF-001464

OPS DIV Map

August 13, 2017

11,277 Acres (IR 8/12/17 @ 2253)

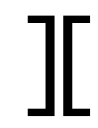
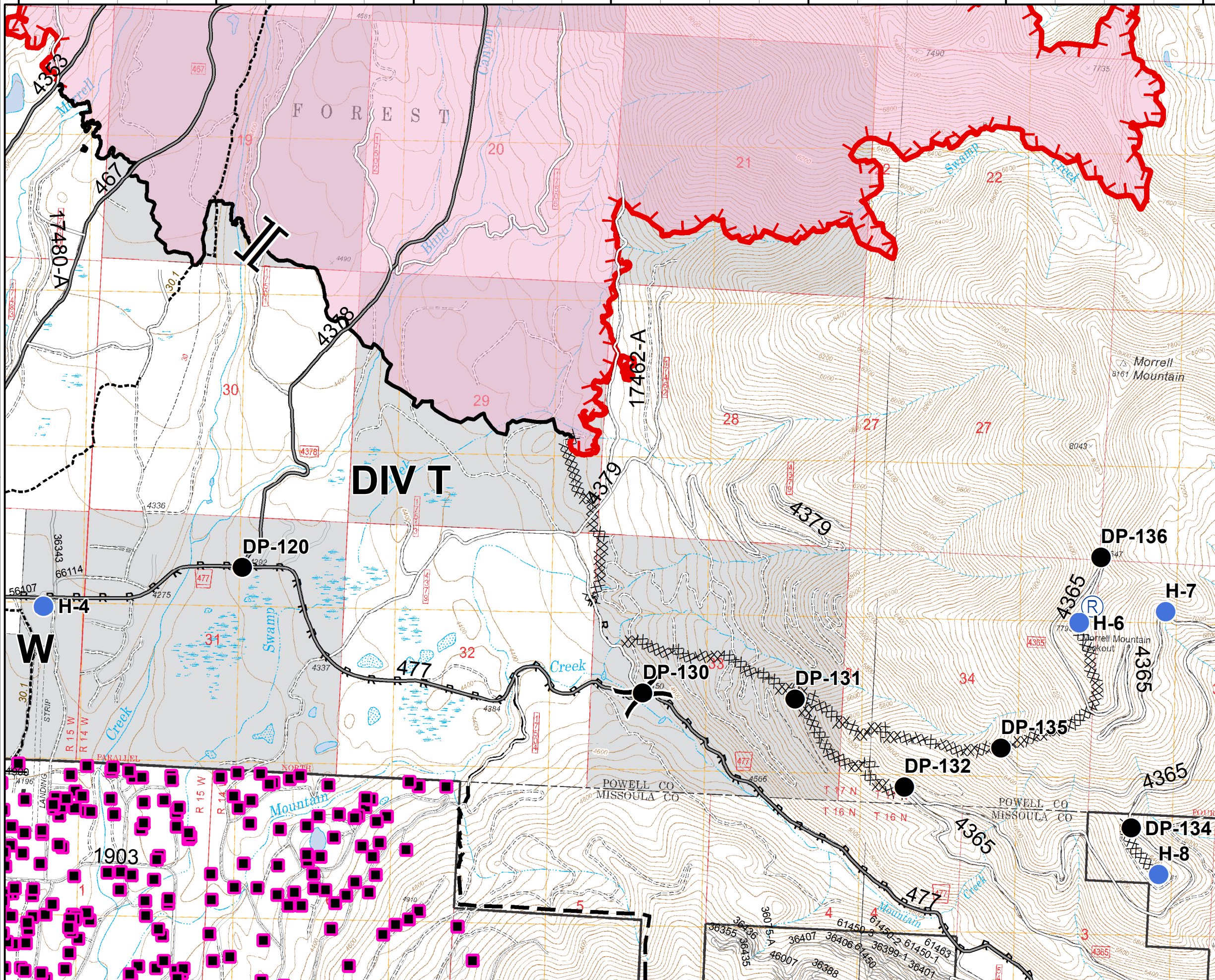
DIV T

113°27'0"W 113°26'0"W 113°25'0"W 113°24'0"W 113°23'0"W 113°22'0"W 113°21'0"W

47°13'0"N

47°12'0"N

47°11'0"N



Branch



Division



Structures



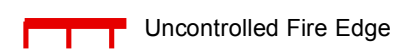
Drop Point



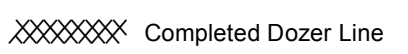
Helispot



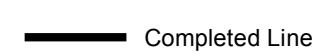
Repeater



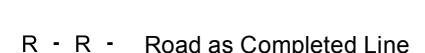
Uncontrolled Fire Edge



Completed Dozer Line



Completed Line



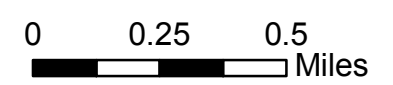
R · R · Road as Completed Line



Planned Fire Line



Fire Area



Rice Ridge Fire

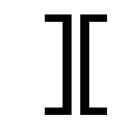






MT-LNF-001464





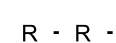




OPS DIV Map

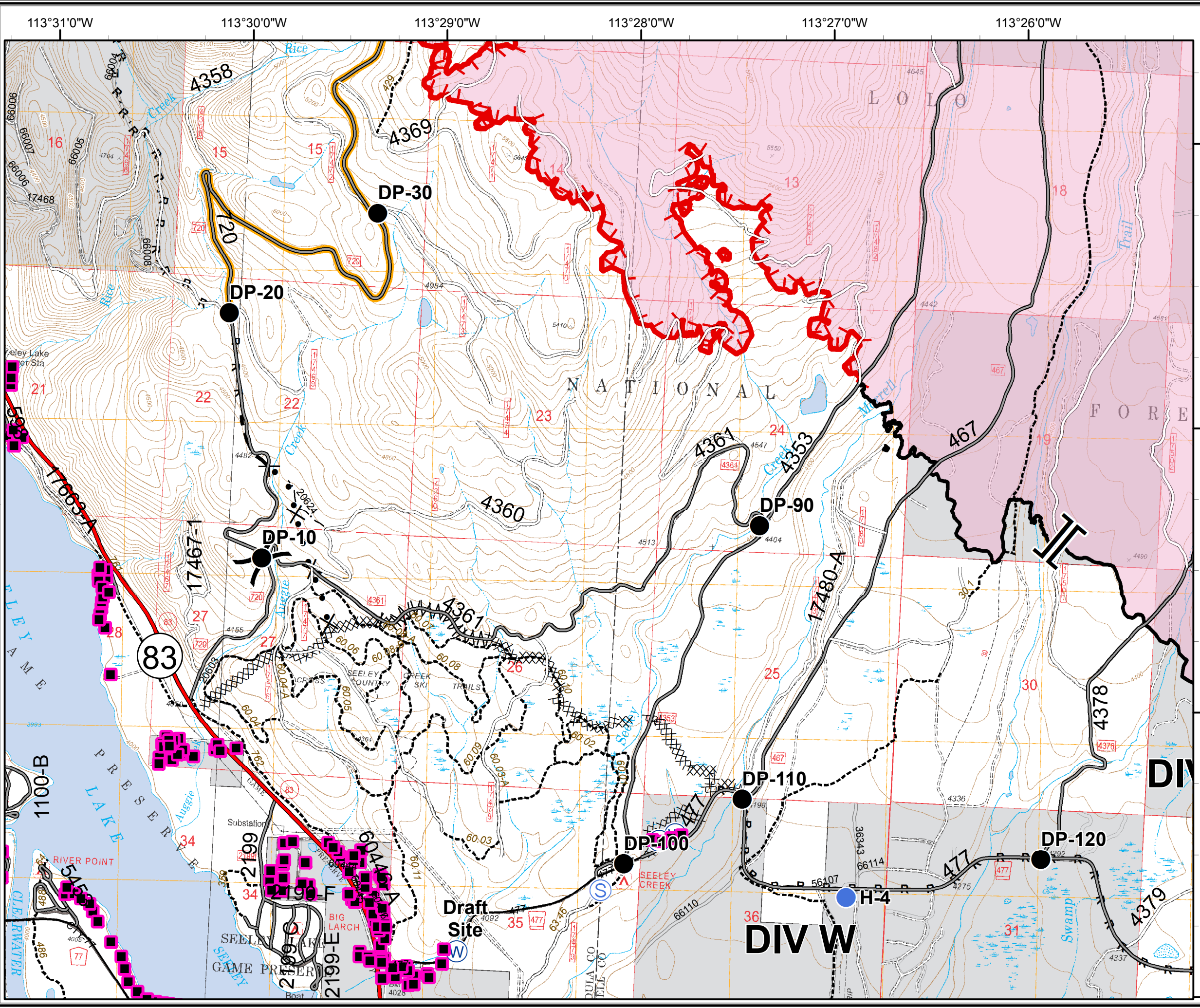
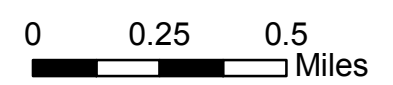
August 13, 2017

11,277 Acres (IR 8/12/17 @ 2253)

DIV W

-  Branch
-  Division
-  Structures
-  Drop Point
-  Helispot
-  Staging Area
-  Water Source

-  Road Closure (Need Div Sup Approval)
-  Uncontrolled Fire Edge
-  Completed Dozer Line
-  Completed Line
-  Road as Completed Line
-  Line Break Completed
-  Planned Fire Line
-  Proposed Dozer Line
-  Fire Area



Rice Ridge Fire

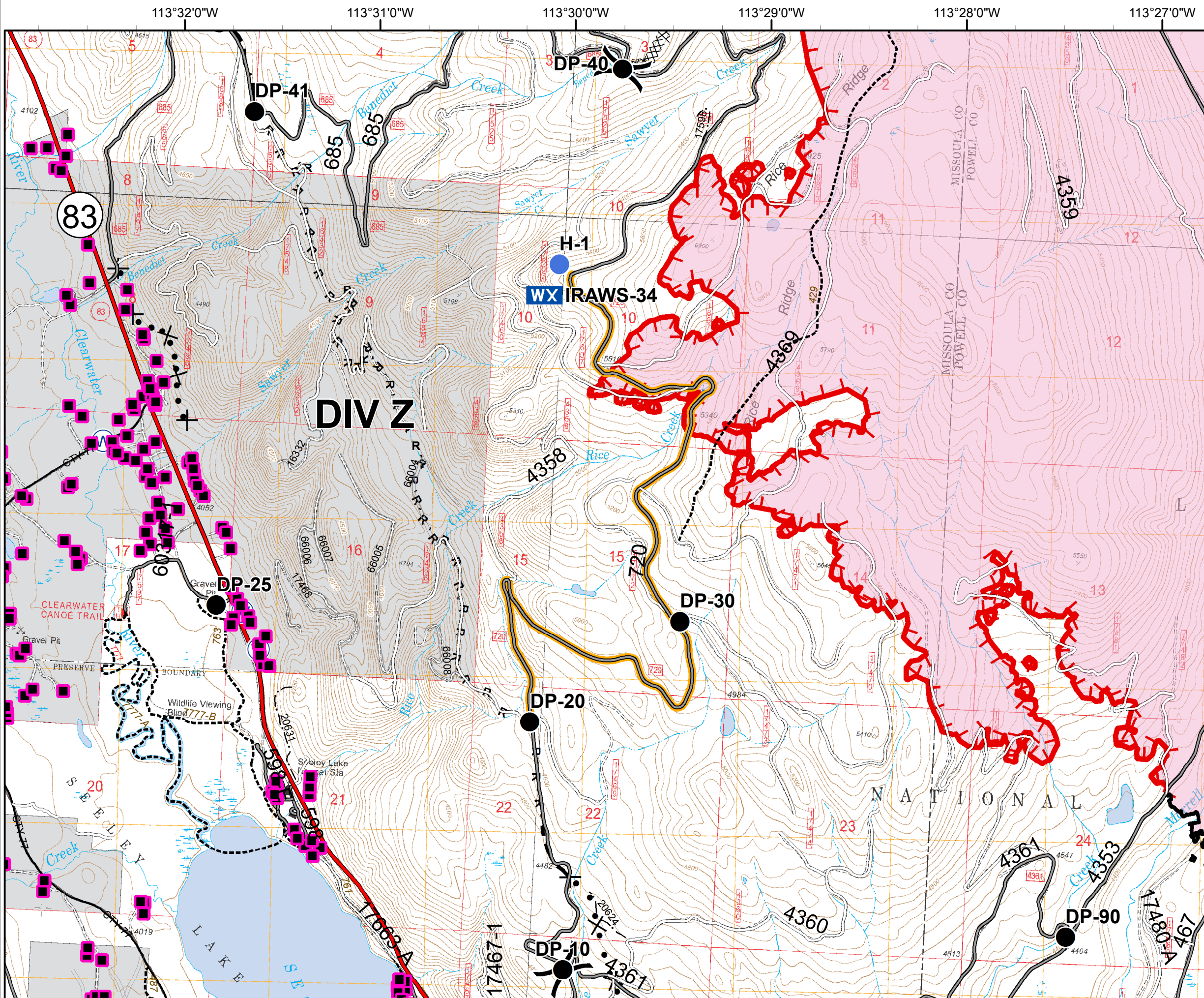
MT-LNF-001464

OPS DIV Map

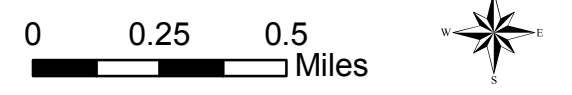
August 13, 2017

11,277 Acres (IR 8/12/17 @ 2253)

DIV Z



- () Division
- Structures
- Drop Point
- Helispot
- WX Mobile Weather Unit
- W Water Source
- Road Closure (Need Div Sup Approval)
- Uncontrolled Fire Edge
- XXXXX Completed Dozer Line
- Completed Line
- R · R · Road as Completed Line
- - - Planned Fire Line
- X · · · Proposed Dozer Line
- Fire Area



Rice Ridge Fire

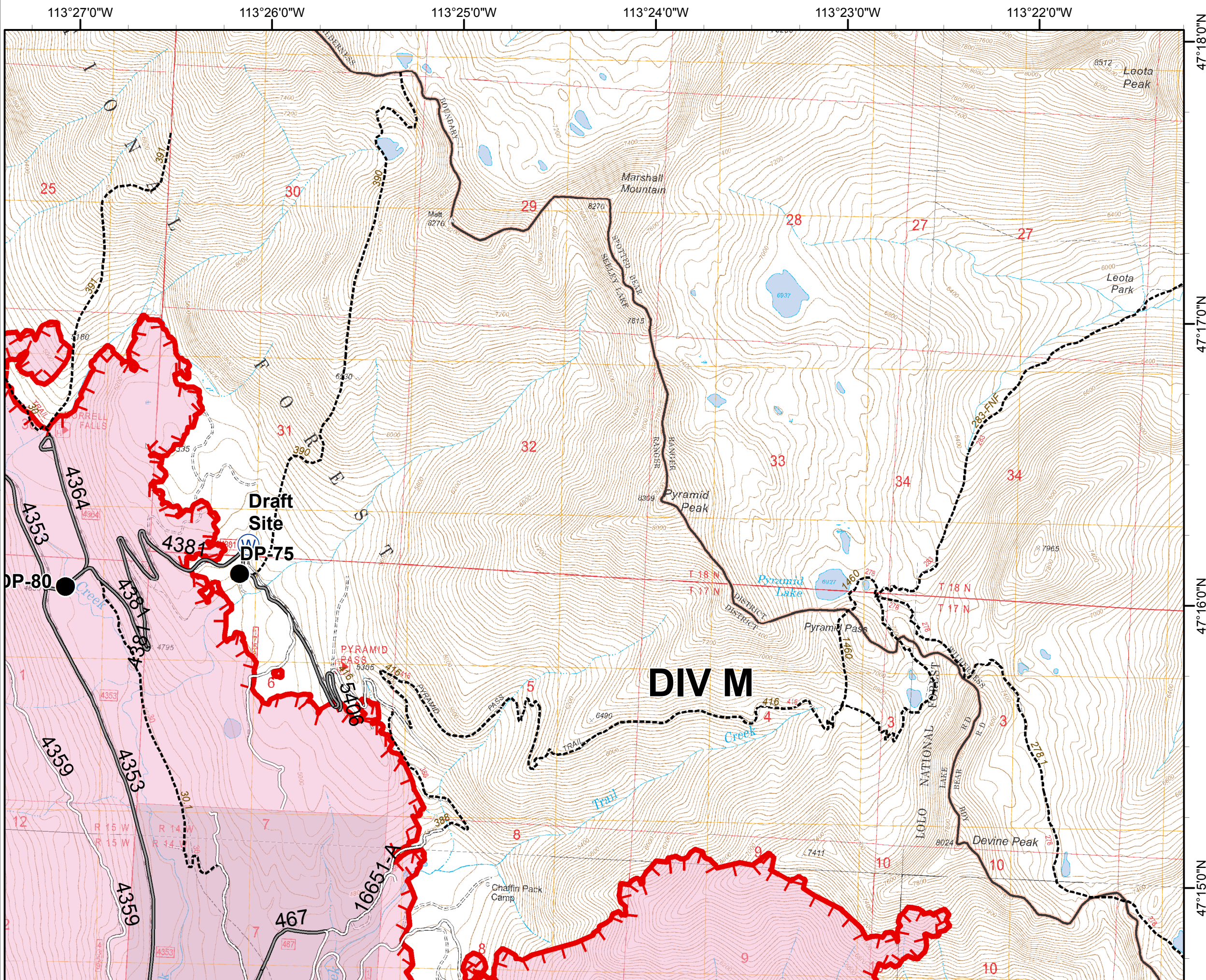
MT-LNF-001464

OPS DIV Map

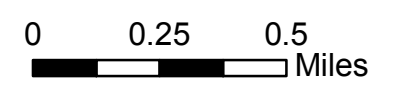
August 13, 2017

11,277 Acres (IR 8/12/17 @ 2253)

DIV M - North



- Structures
- Drop Point
- Water Source
- Uncontrolled Fire Edge
- Fire Area



Rice Ridge Fire

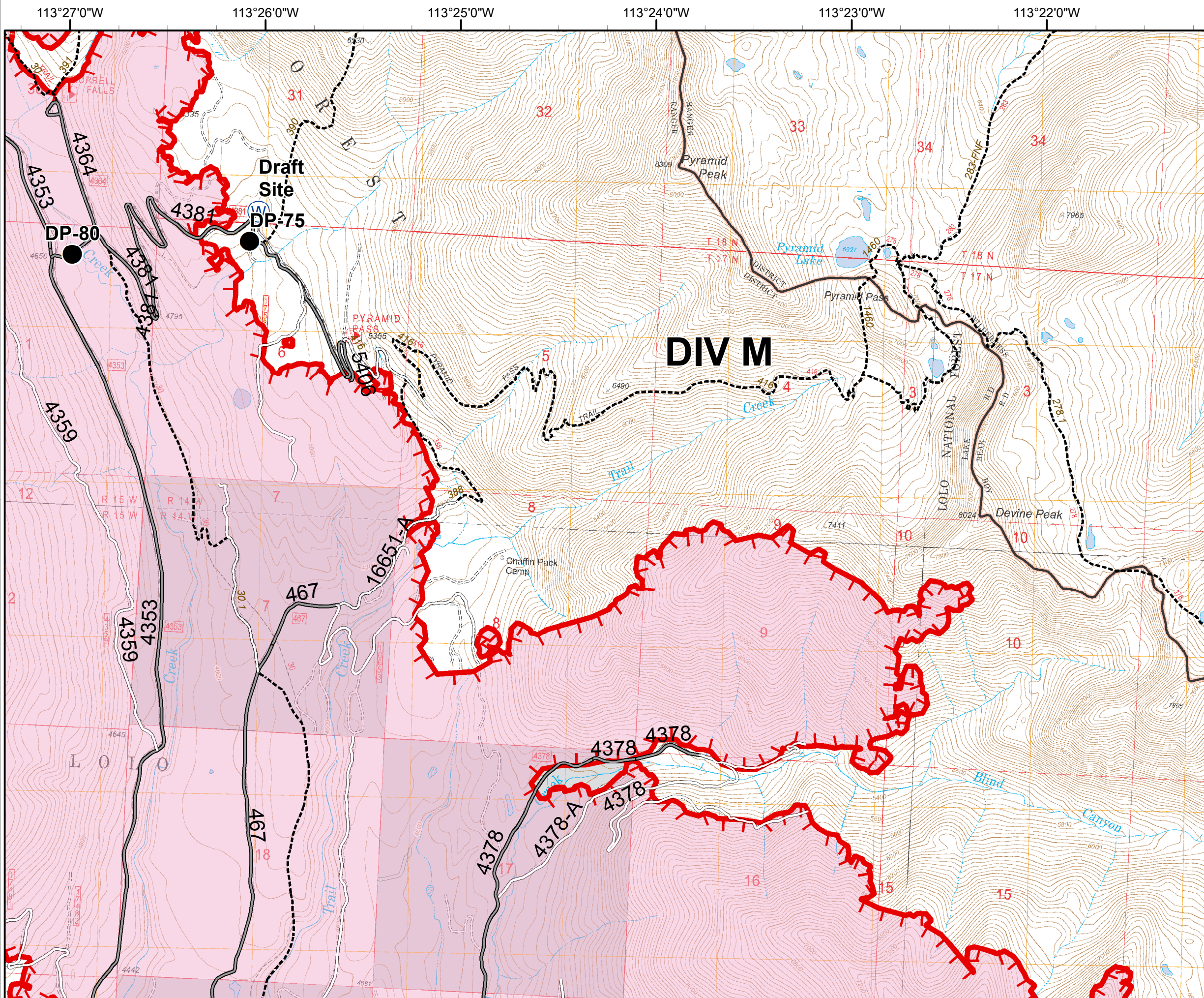
MT-LNF-001464

OPS DIV Map

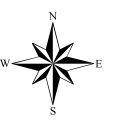
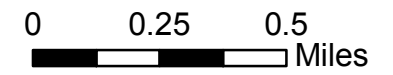
August 13, 2017

11,277 Acres (IR 8/12/17 @ 2253)

DIV M - South



- Structures
- Drop Point
- ⊕ Water Source
- ▬ Uncontrolled Fire Edge
- Fire Area



Rice Ridge Fire

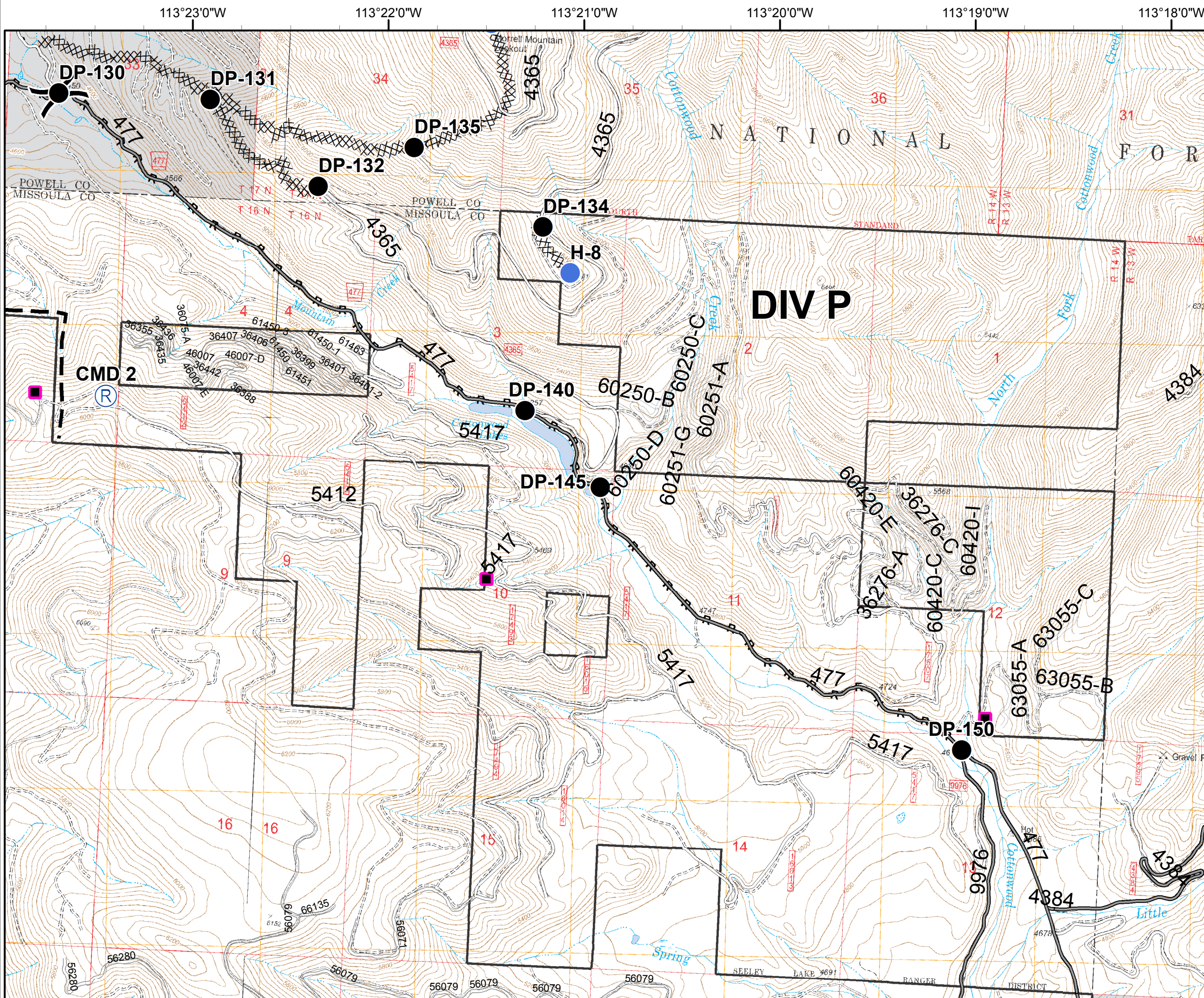
MT-LNF-001464







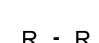

OPS DIV Map

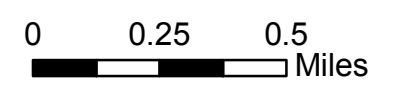
August 13, 2017

11,277 Acres (IR 8/12/17 @ 2253)

DIV P



-  Division
-  Structures
-  Drop Point
-  Helispot
-  Repeater
-  Completed Dozer Line
-  R · R · Road as Completed Line
-  Planned Fire Line



Rice Ridge Fire

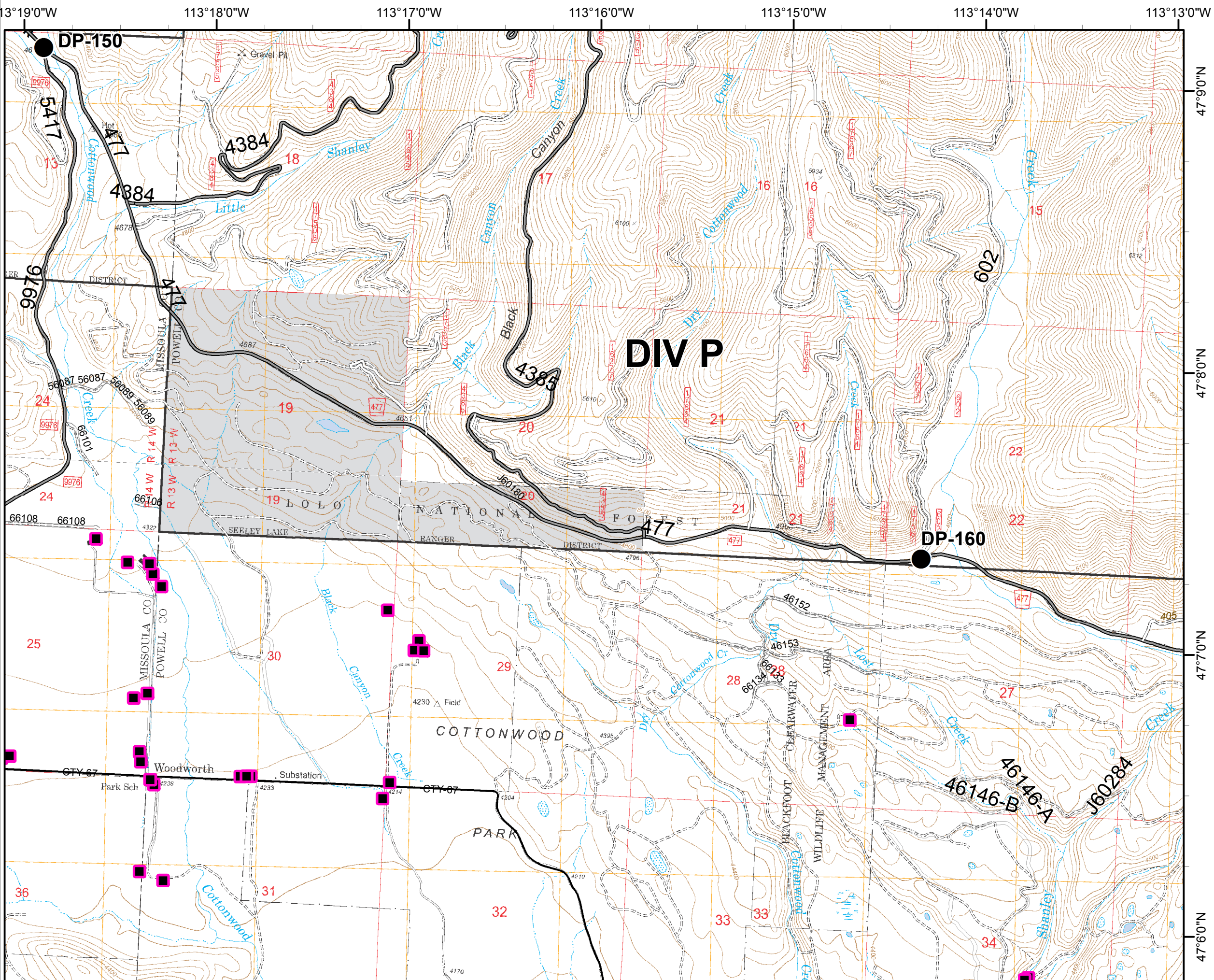
MT-LNF-001464

OPS DIV Map

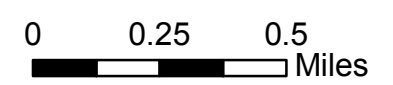
August 13, 2017

11,277 Acres (IR 8/12/17 @ 2253)

DIV P



- Structures
- Drop Point
- R - R - Road as Completed Line



113°13'0"W 113°12'0"W 113°11'0"W 113°10'0"W 113°9'0"W 113°8'0"W

Rice Ridge Fire

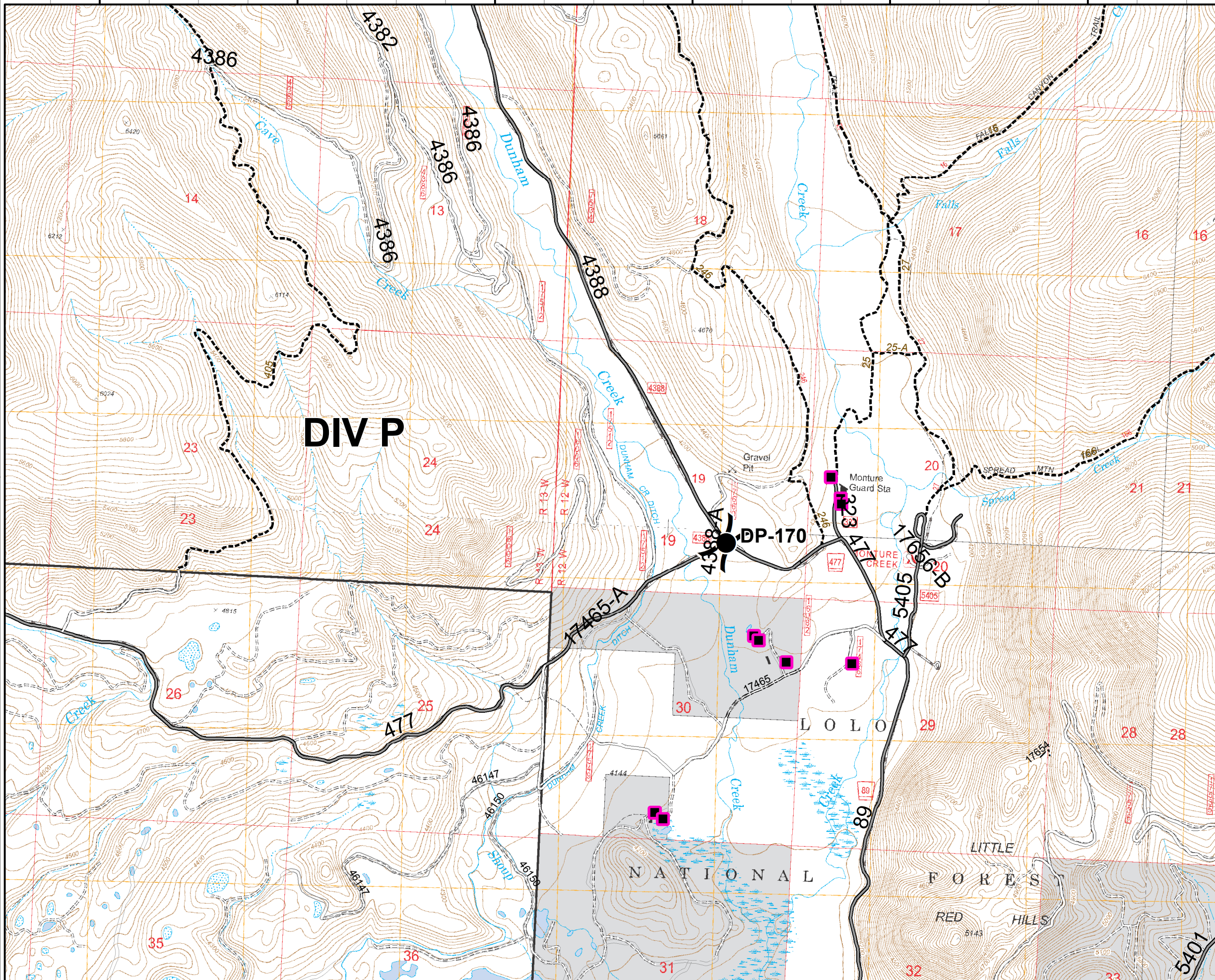
MT-LNF-001464

OPS DIV Map

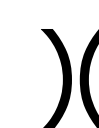


August 13, 2017

11,277 Acres (IR 8/12/17 @ 2253)

DIV P



47°9'0"N
47°8'0"N
47°7'0"N

-  Division
-  Structures
-  Drop Point

