

Briefing Map

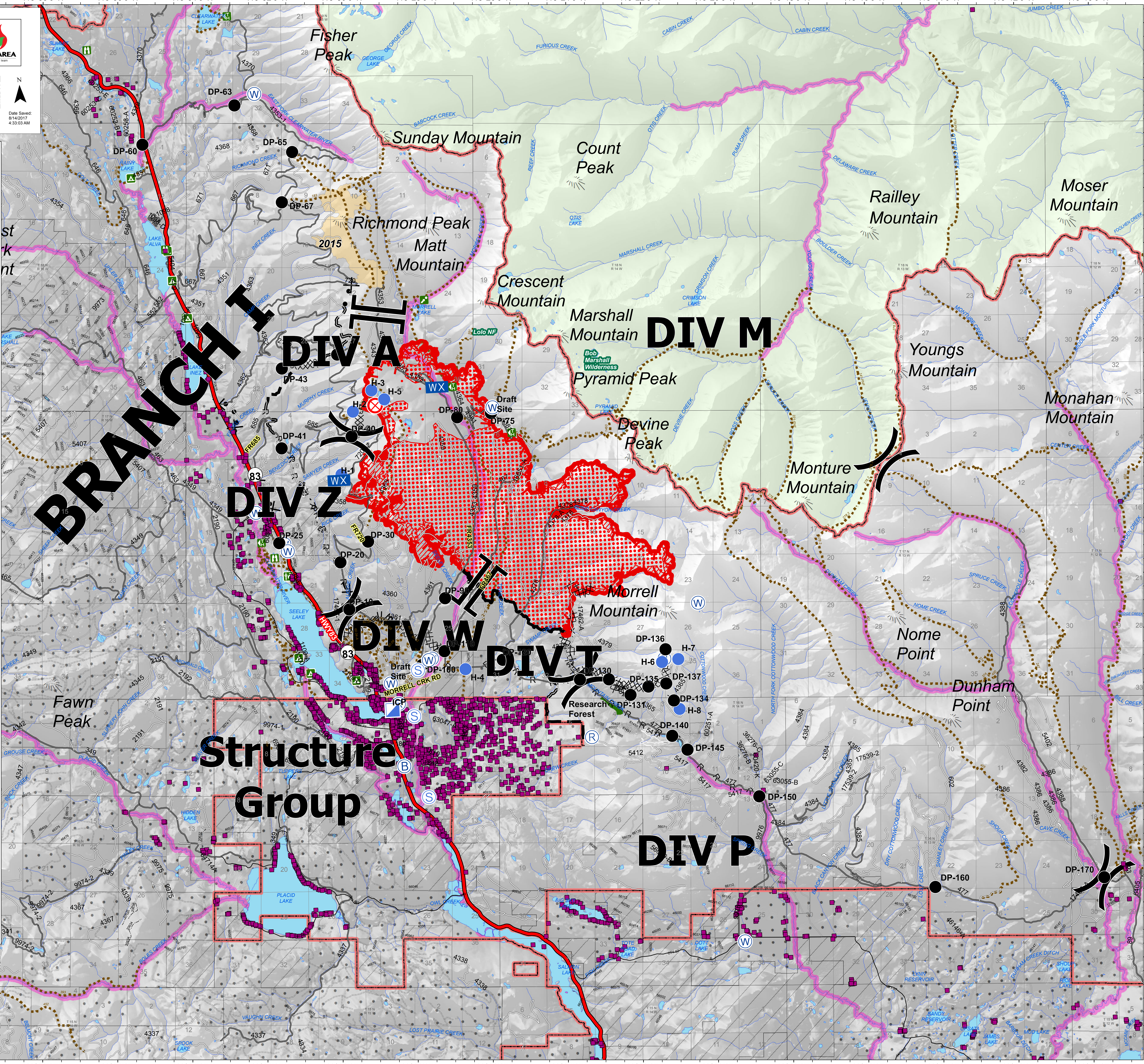
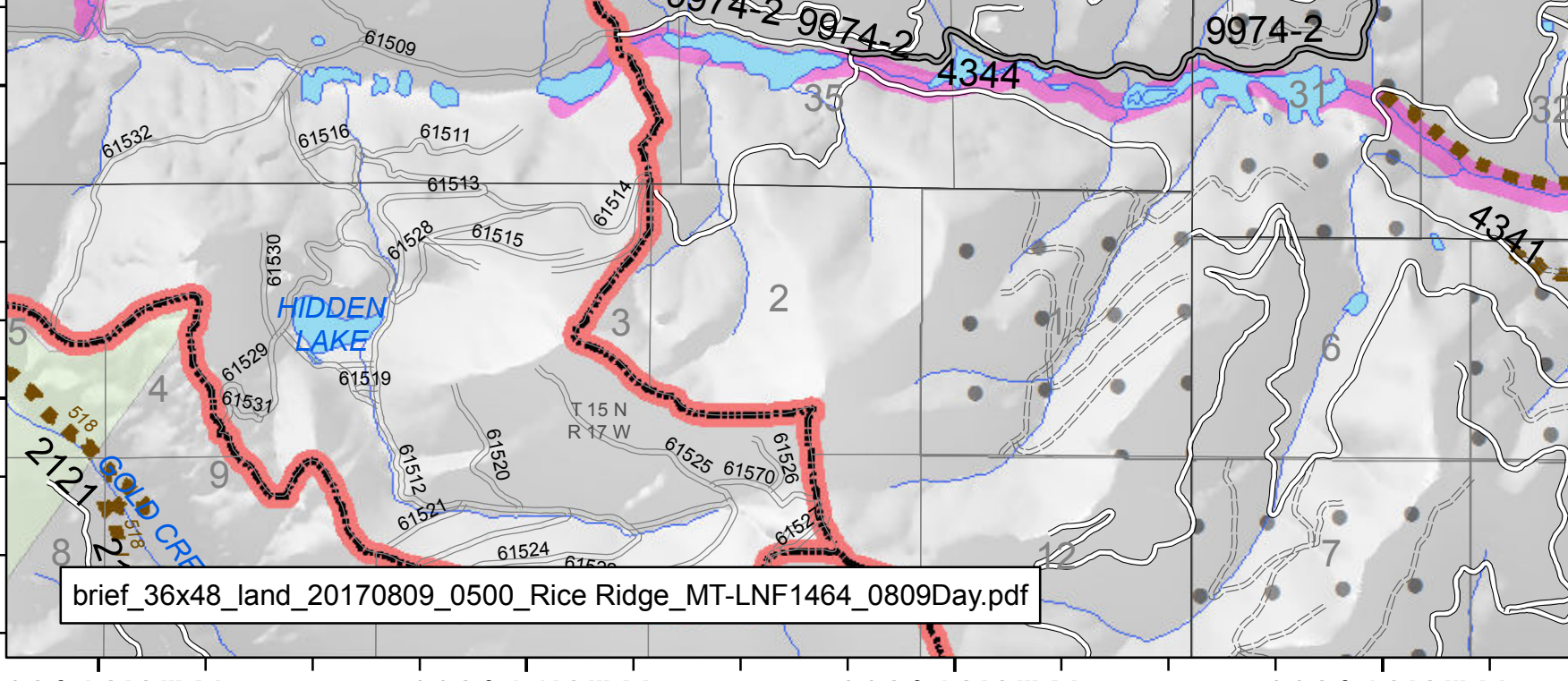
RICE RIDGE FIRE

MT-LNF-001464
 August 14, 2017
 11,277 Acres (IR 8/12/17 @ 2253)



1:40,000
 Date Saved: 8/14/2017 4:33:03 AM

- Branch
- Division
- Drop Point
- Fire Origin
- Helispot
- Incident Base
- Incident Command Post
- Mobile Weather Unit
- Repeater
- Staging Area
- Water Source
- Campground
- Lookout
- Point of Interest
- Ranger Station
- Trailhead
- Viewing Area
- Uncontrolled Fire Edge
- Completed Dozer Line
- Completed Line
- Road as Completed Line
- Line Break Completed
- Planned Fire Line
- Proposed Dozer Line
- IR Isolated Heat Source (08/12/17 - 2253)
- IR Scattered Heat (08/12/17 - 2253)
- IR Intense Heat (08/12/17 - 2253)
- Research Forest
- Administrative Boundary
- Wilderness Area
- Ownership**
- Private
- State of Montana



113°46'0"W 113°44'0"W 113°42'0"W 113°40'0"W 113°38'0"W 113°36'0"W 113°34'0"W 113°32'0"W 113°30'0"W 113°28'0"W 113°26'0"W 113°24'0"W 113°22'0"W 113°20'0"W 113°18'0"W 113°16'0"W 113°14'0"W 113°12'0"W 113°10'0"W