

Rice Ridge Fire

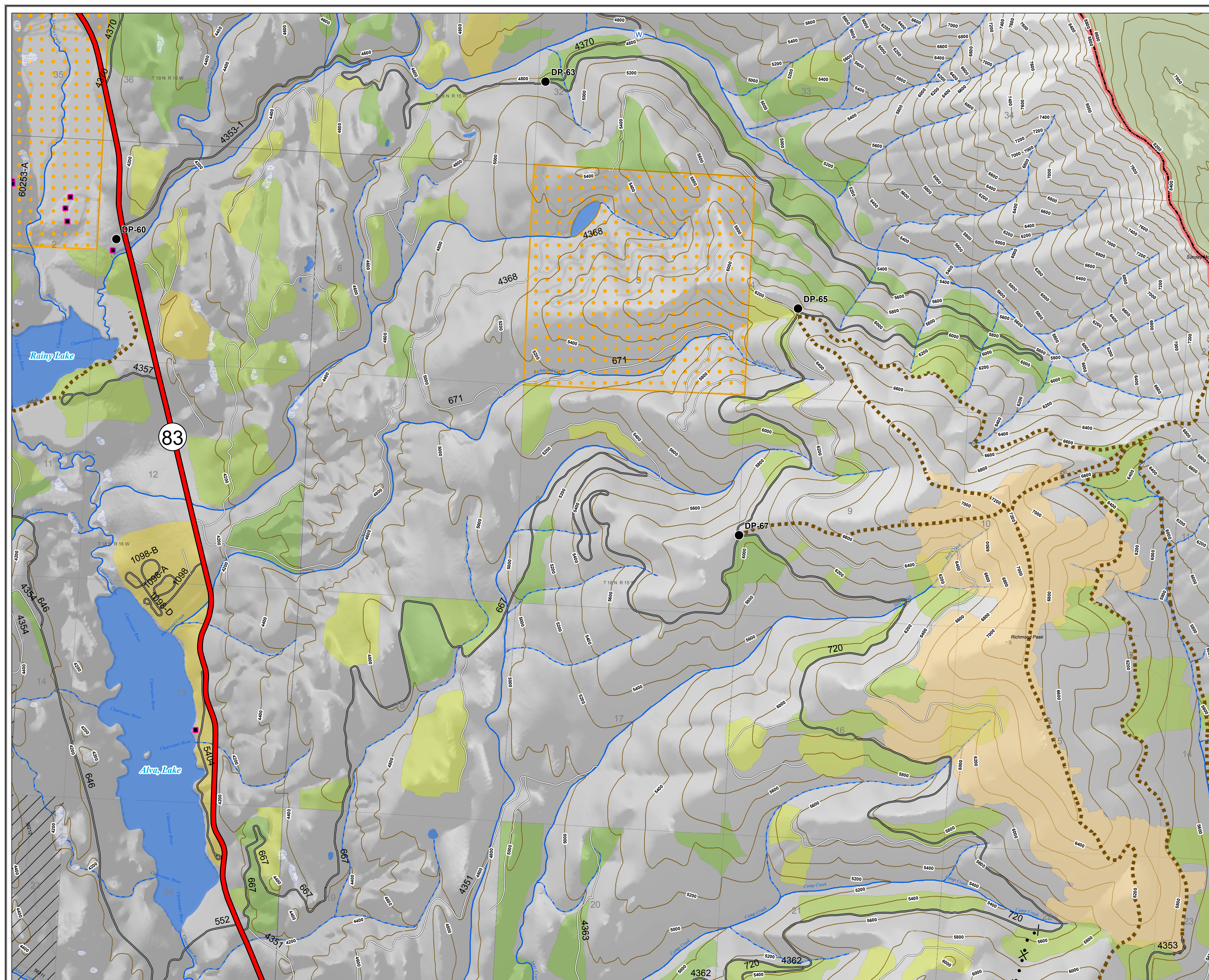
MT-LNF-001464

OPS Map

North Ops

August 14, 2017

11,277 Acres (IRT 8/12/17 @ 2253)



Legend

- Drop Point
- Ⓜ Water Source
- ⊗ • ⊗ Proposed Dozer Line



0 0.25 0.5 1 Miles

Rice Ridge Fire

MT-LNF-001464

OPS Map

DIV A

August 14, 2017

11,277 Acres (IRt 8/12/17 @ 2253)

BRANCH I

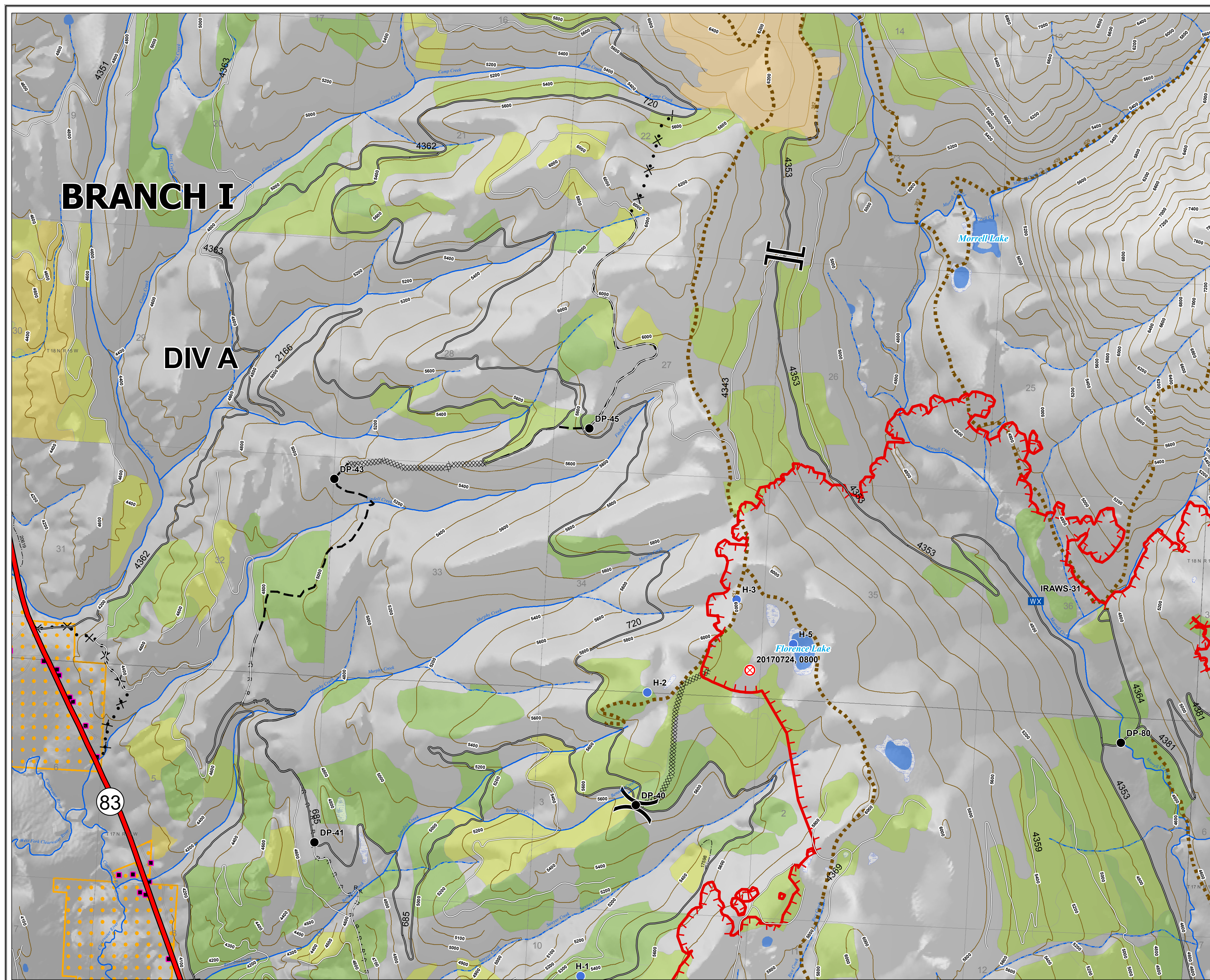
DIV A

Legend

- Drop Point
- ⊗ Fire Origin
- Helisport
- WX Mobile Weather Unit
- || Branch
-) Division
- Uncontrolled Fire Edge
- Completed Dozer Line
- R · R · R · R Road as Completed Line
- Planned Fire Line
- Proposed Dozer Line



0 0.25 0.5 1 Miles



Rice Ridge Fire

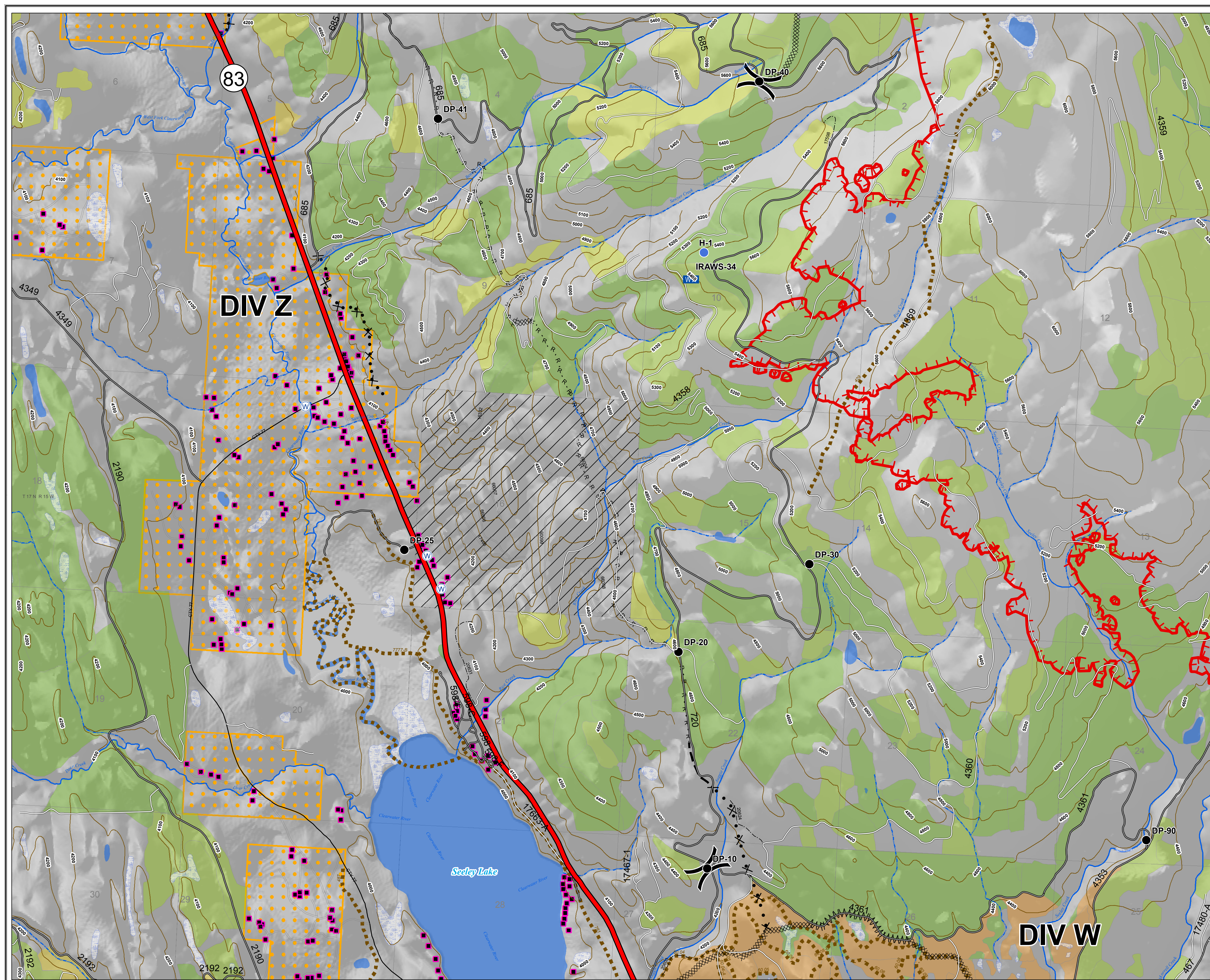
MT-LNF-001464

OPS Map

DIV Z

August 14, 2017

11,277 Acres (IRt 8/12/17 @ 2253)

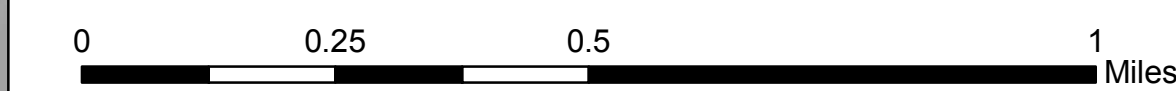


DIV Z

DIV W

Legend

- Drop Point
- Helispot
- WX Mobile Weather Unit
- W Water Source
-) Division
- Uncontrolled Fire Edge
- Completed Dozer Line
- R · R · R · R Road as Completed Line
- Line Break Completed
- Planned Fire Line
- Proposed Dozer Line



Rice Ridge Fire

MT-LNF-001464

OPS Map

DIV W & T

August 14, 2017

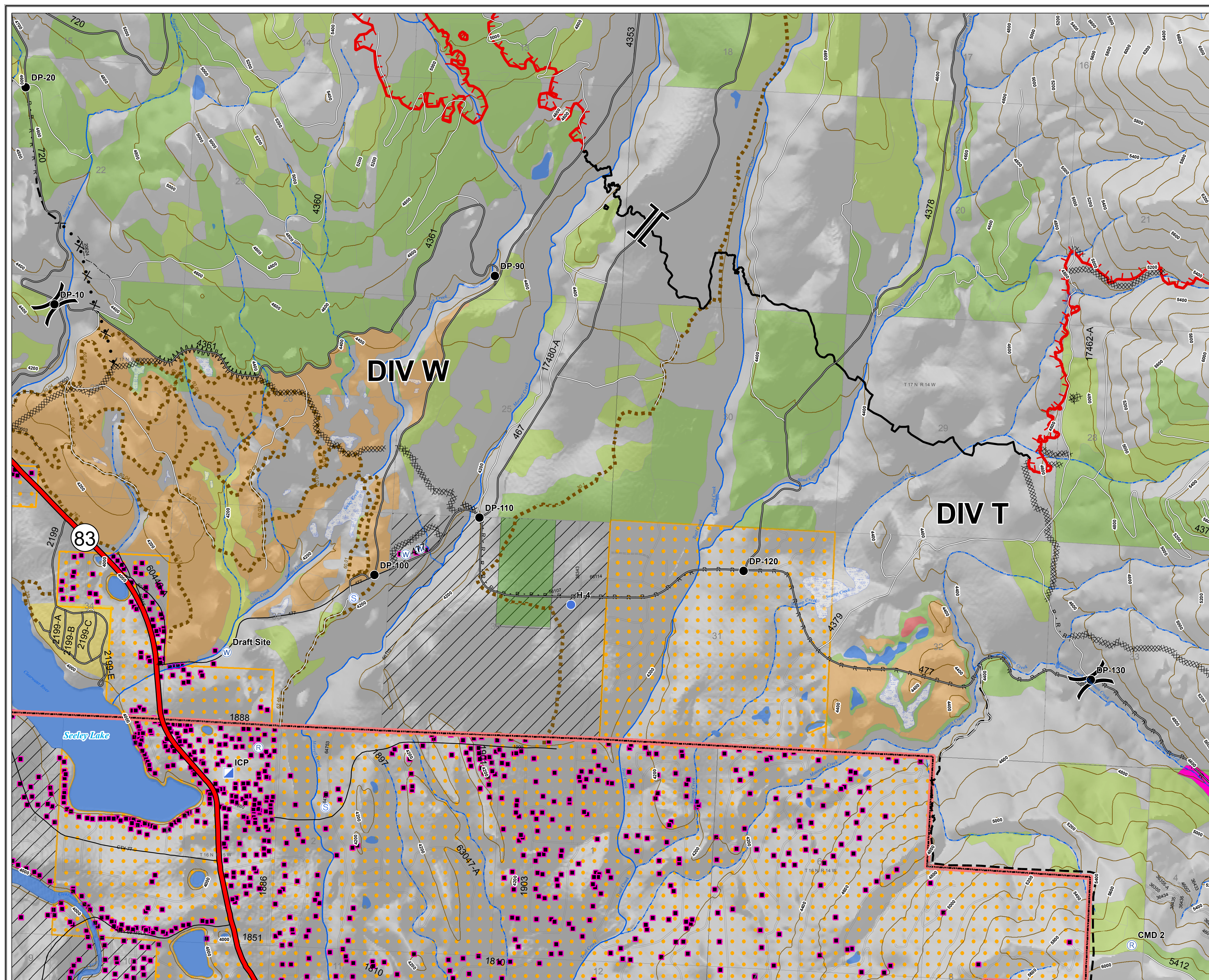
11,277 Acres (IRT 8/12/17 @ 2253)

Legend

- Drop Point
- Helispot
- ▣ Incident Command Post
- Ⓡ Repeater
- Ⓢ Staging Area
- Ⓦ Water Source
- ⌋ Branch
- ⌋ Division
- Uncontrolled Fire Edge
- ⊗ Completed Dozer Line
- Completed Line
- · · · Road as Completed Line
- ⌚ Line Break Completed
- - - Planned Fire Line
- ⊗ · · ⊗ Proposed Dozer Line



0 0.25 0.5 1 Miles



DIV W

DIV T

83

Seely Lake

Draft Site

CMD 2

Rice Ridge Fire

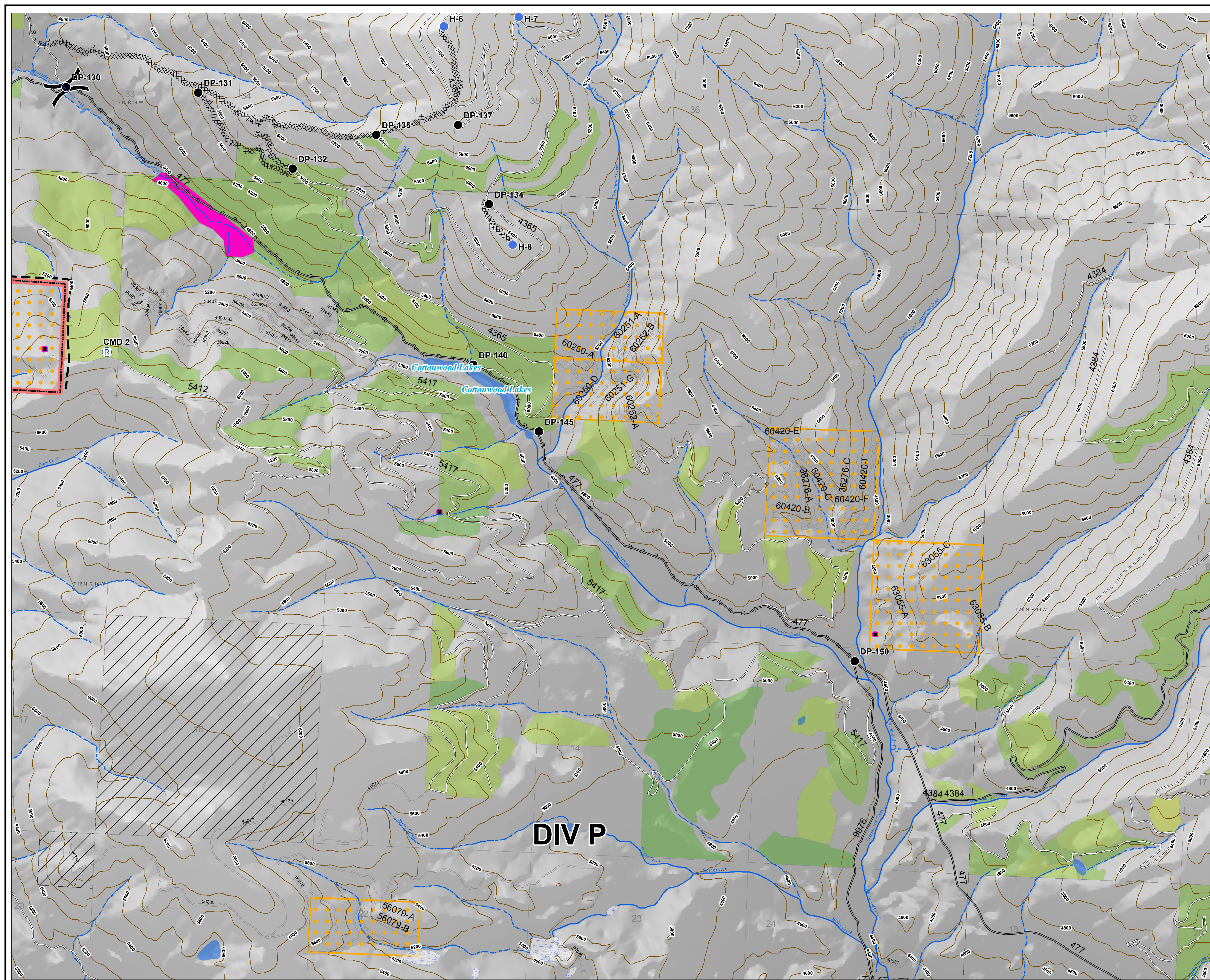
MT-LNF-001464

OPS Map

DIV P - West

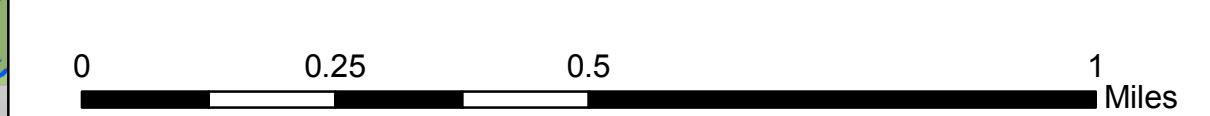
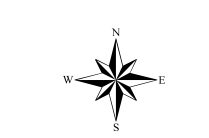
August 14, 2017

11,277 Acres (IRt 8/12/17 @ 2253)



Legend

- Drop Point
- Helispot
- Ⓡ Repeater
- ⌘ Division
- ▨ Completed Dozer Line
- R · R · R · R Road as Completed Line
- Planned Fire Line



Rice Ridge Fire

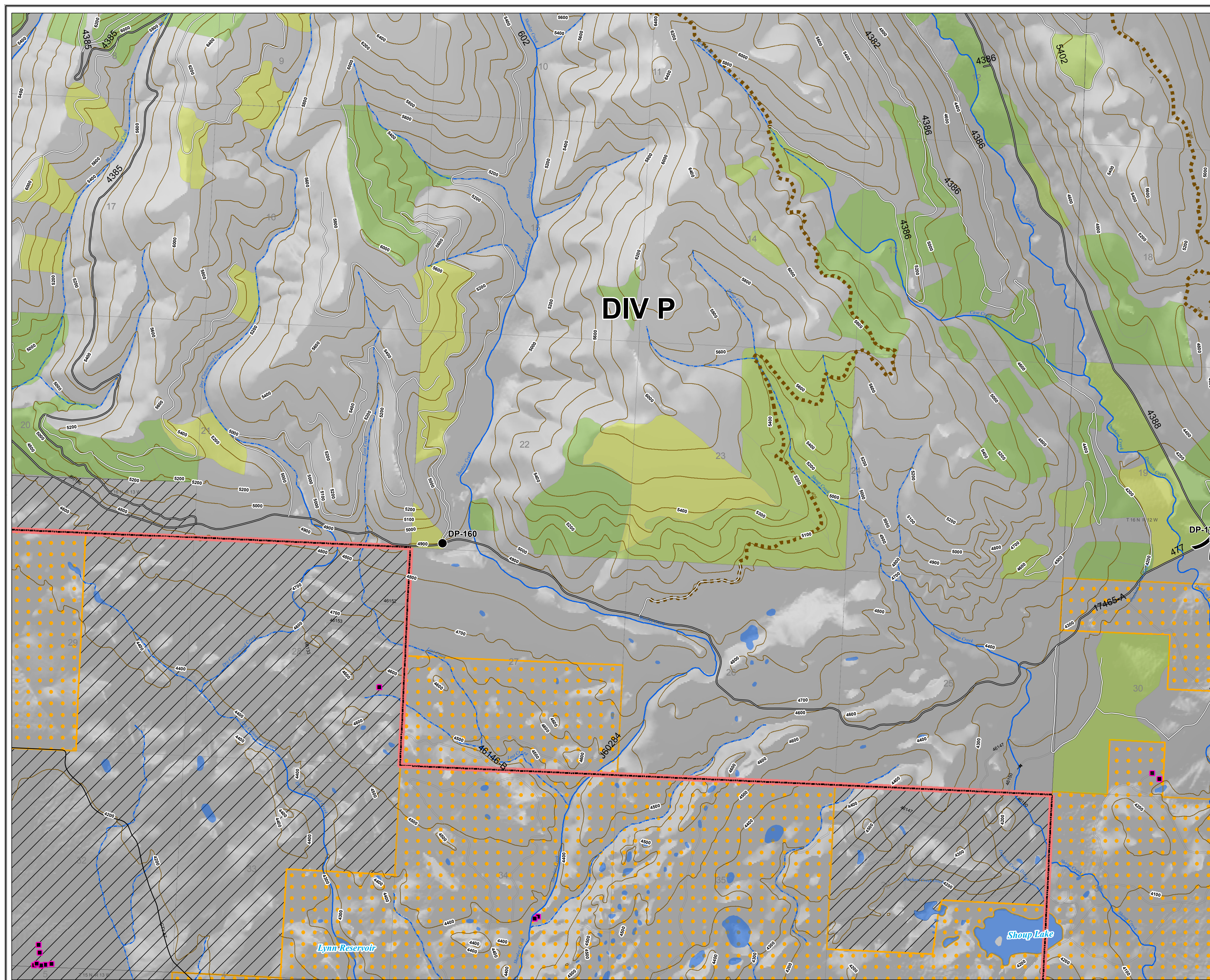
MT-LNF-001464

OPS Map

DIV P - East

August 14, 2017

11,277 Acres (IRt 8/12/17 @ 2253)



DIV P

DP-160

DP-170

Lynn Reservoir

Shoup Lake

Legend

- Drop Point
-) Division

