

113°27'0"W 113°26'0"W 113°25'0"W 113°24'0"W 113°23'0"W 113°22'0"W 113°21'0"W

Rice Ridge Fire

MT-LNF-001464

OPS DIV Map

August 14, 2017

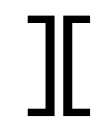
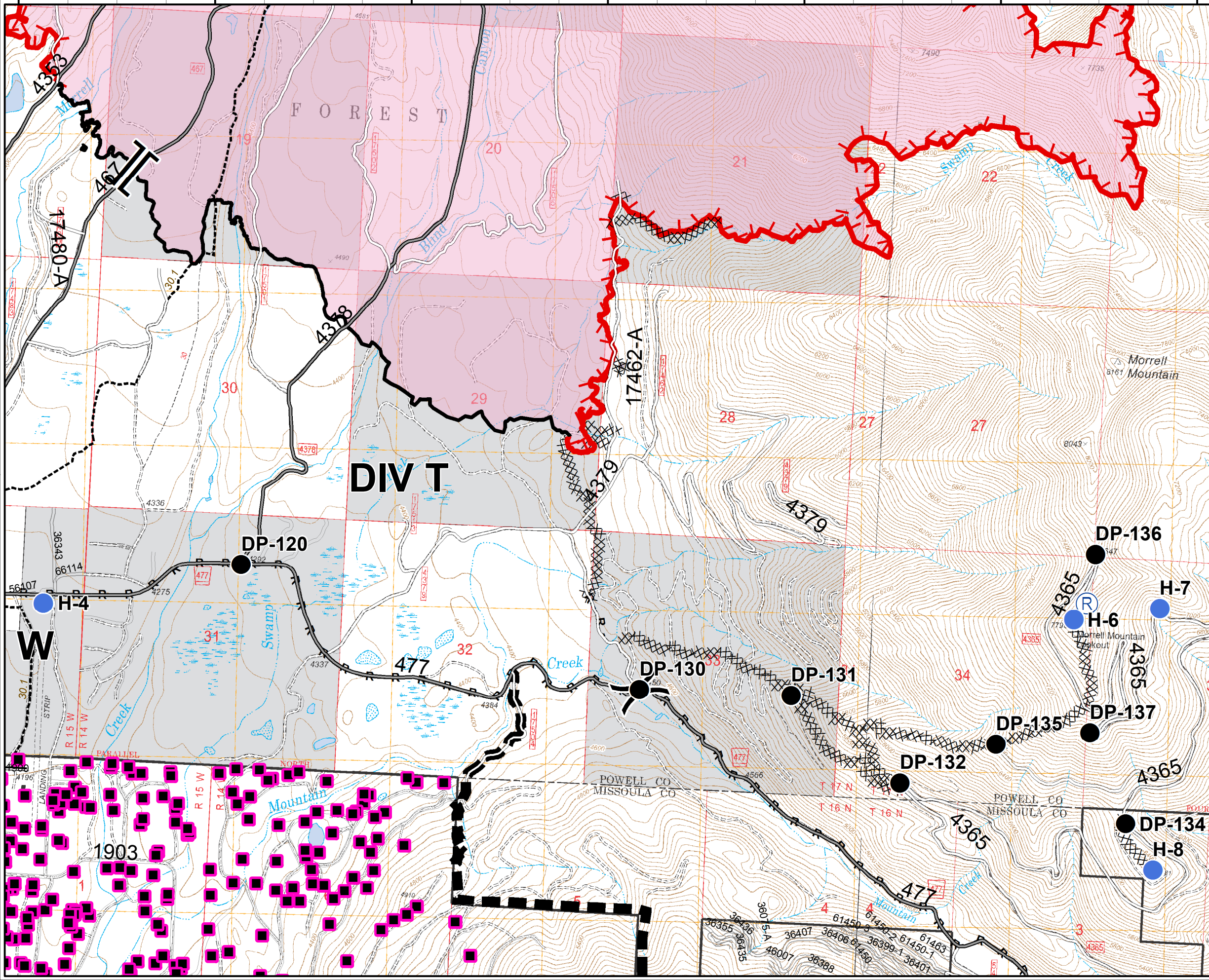
11,277 Acres (IR 8/12/17 @ 2253)

DIV T

47°13'0"N

47°12'0"N

47°11'0"N



Branch



Division



Structures



Drop Point



Helispot



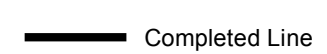
Repeater



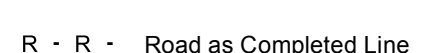
Uncontrolled Fire Edge



Completed Dozer Line



Completed Line



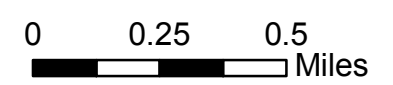
R - R - Road as Completed Line



Planned Fire Line



Fire Area



Rice Ridge Fire

MT-LNF-001464

OPS DIV Map

August 14, 2017

11,277 Acres (IR 8/12/17 @ 2253)

DIV W

Branch

Division

Structures

Drop Point

Helispot

Staging Area

Water Source

Road Closure (Need Div Sup Approval)

Uncontrolled Fire Edge

Completed Dozer Line

Completed Line

R - R - Road as Completed Line

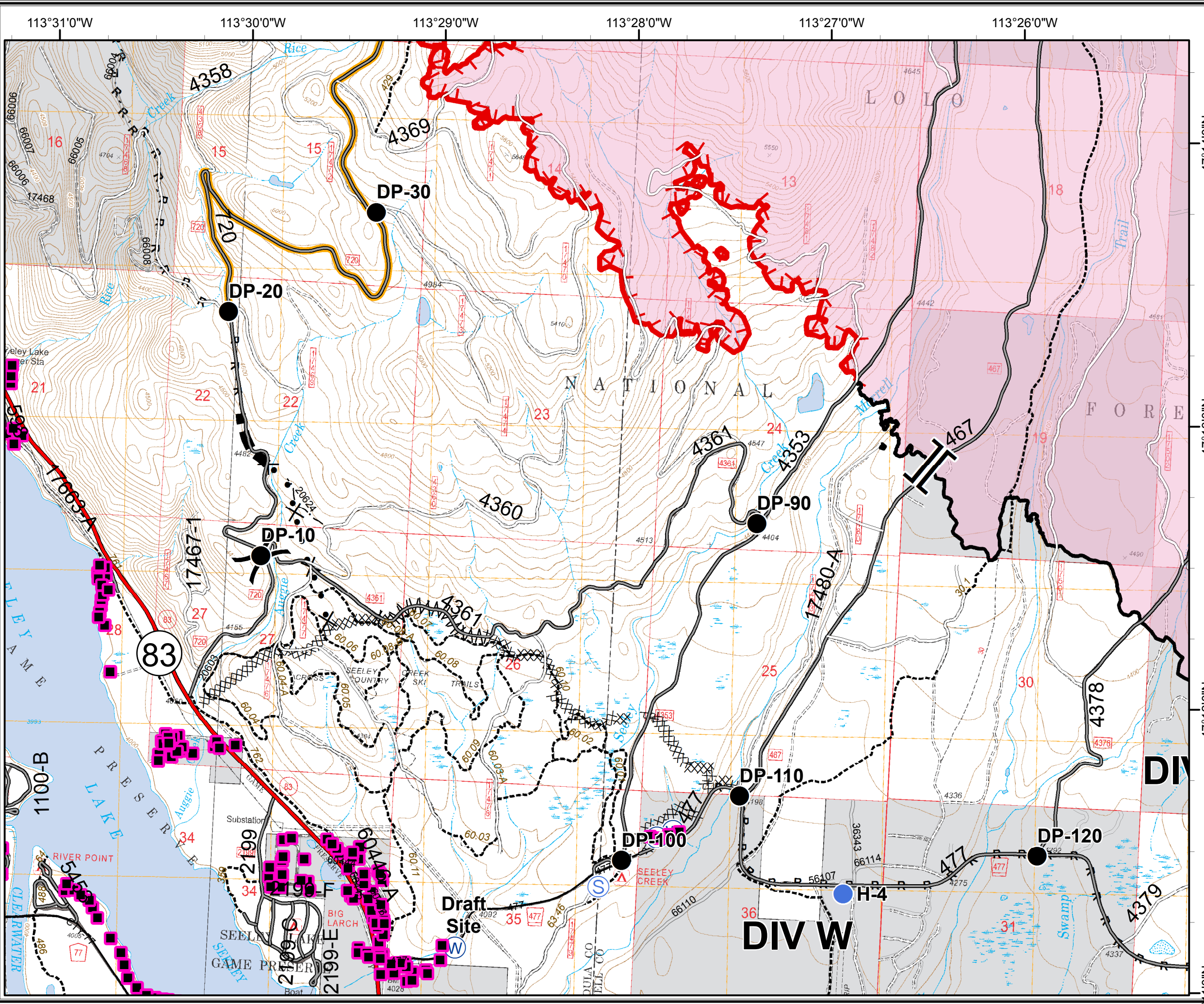
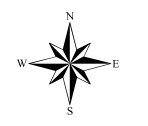
Line Break Completed

Planned Fire Line

Proposed Dozer Line

Fire Area

0 0.25 0.5 Miles



Rice Ridge Fire

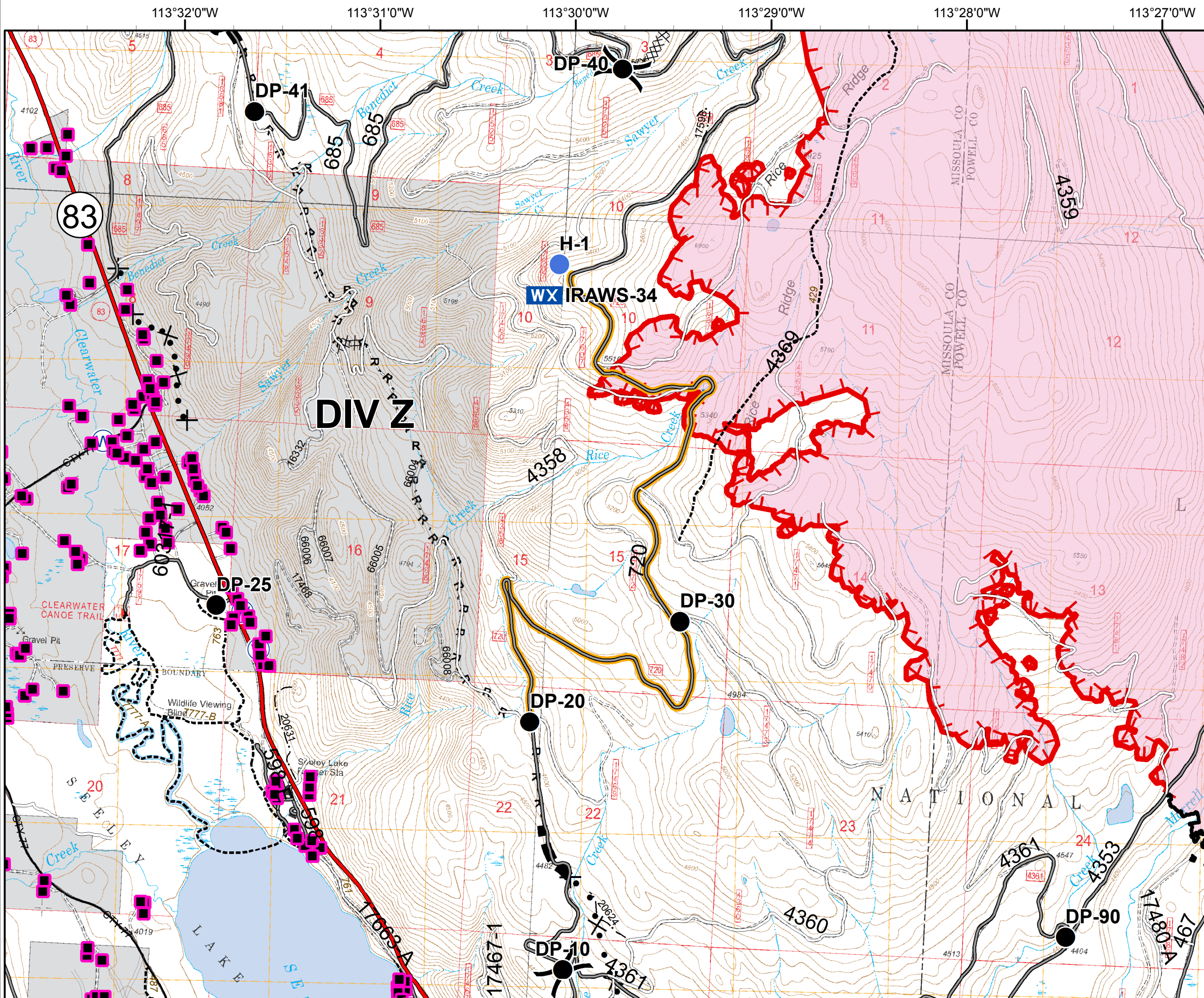
MT-LNF-001464

OPS DIV Map

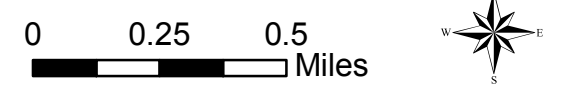
August 14, 2017

11,277 Acres (IR 8/12/17 @ 2253)

DIV Z



- () Division
- Structures
- Drop Point
- Helispot
- WX Mobile Weather Unit
- W Water Source
- Road Closure (Need Div Sup Approval)
- Uncontrolled Fire Edge
- Completed Dozer Line
- Completed Line
- R · R · Road as Completed Line
- Planned Fire Line
- Proposed Dozer Line
- Fire Area



113°33'0"W 113°32'0"W 113°31'0"W 113°30'0"W 113°29'0"W 113°28'0"W

Rice Ridge Fire

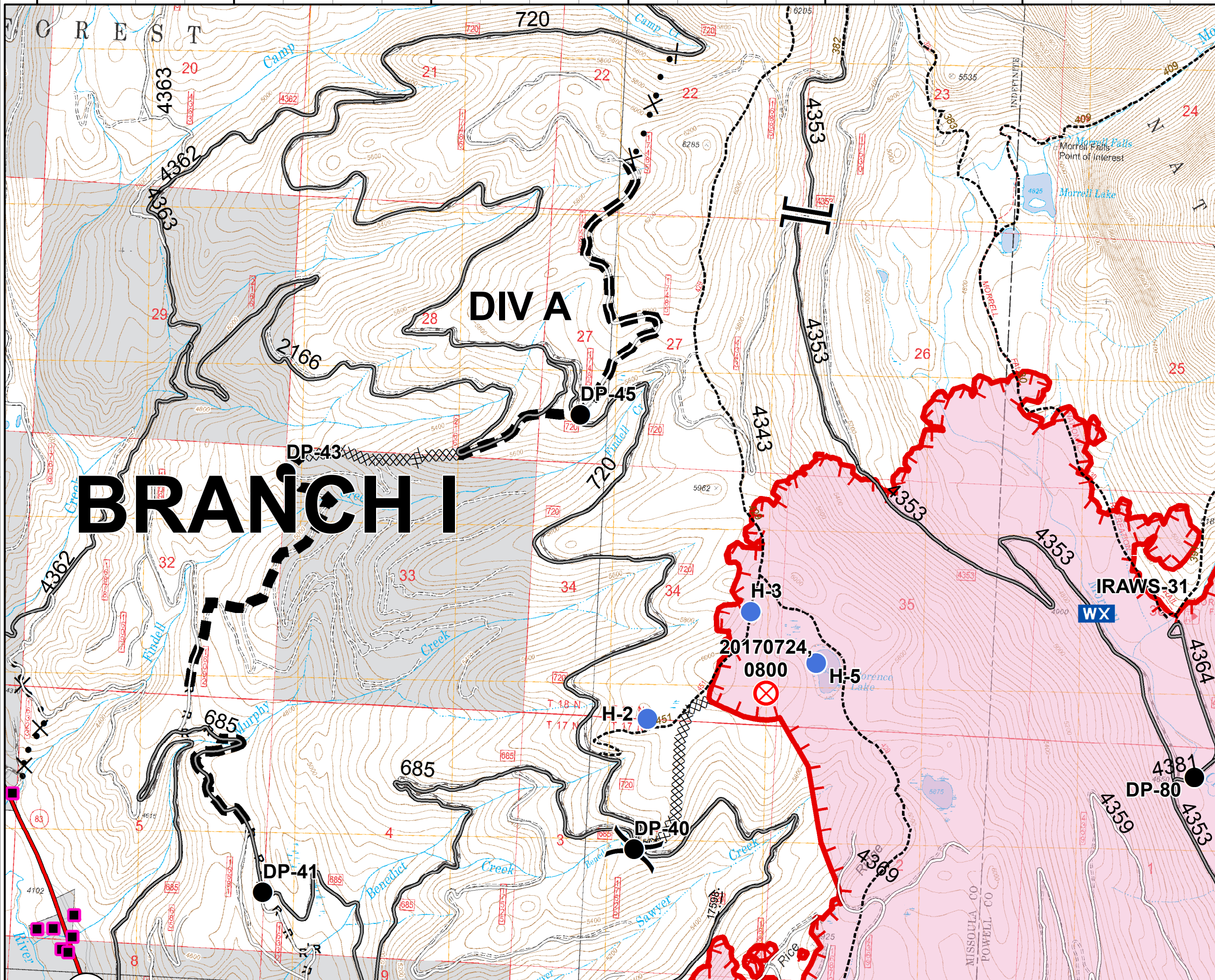
MT-LNF-001464

OPS DIV Map

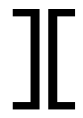












August 14, 2017

11,277 Acres (IR 8/12/17 @ 2253)

DIV A



BRANCH I

-  Branch
-  Division
-  Structures
-  Drop Point
-  Fire Origin
-  Helispot
-  Mobile Weather Unit
-  Uncontrolled Fire Edge
-  Completed Dozer Line
-  Road as Completed Line
-  Planned Fire Line
-  Proposed Dozer Line
-  Fire Area

0 0.25 0.5 Miles



Rice Ridge Fire

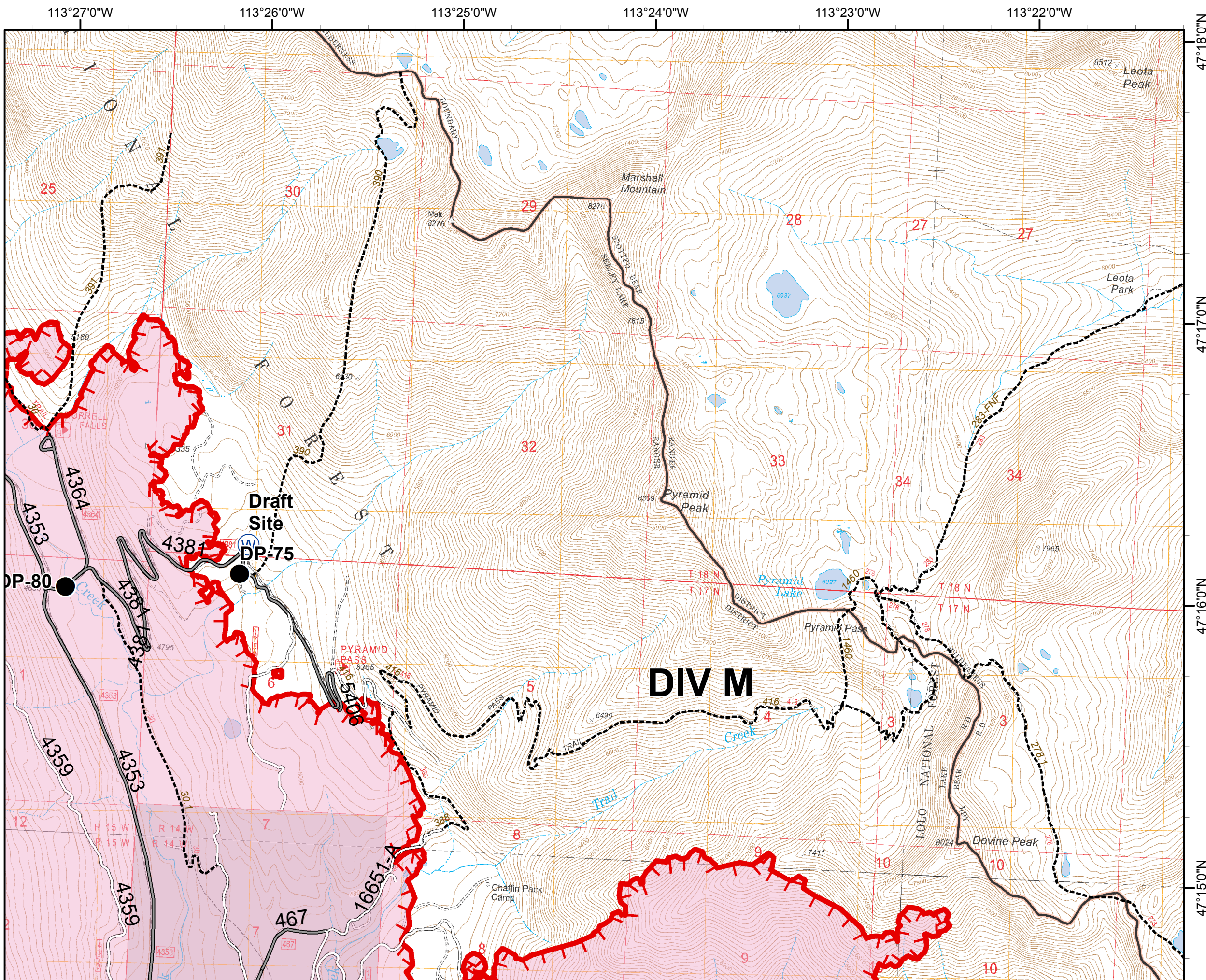
MT-LNF-001464

OPS DIV Map

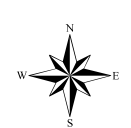
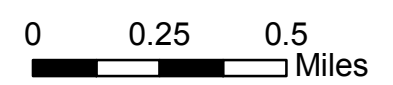
August 14, 2017

11,277 Acres (IR 8/12/17 @ 2253)

DIV M - North



- Structures
- Drop Point
- Water Source
- Uncontrolled Fire Edge
- Fire Area



Rice Ridge Fire

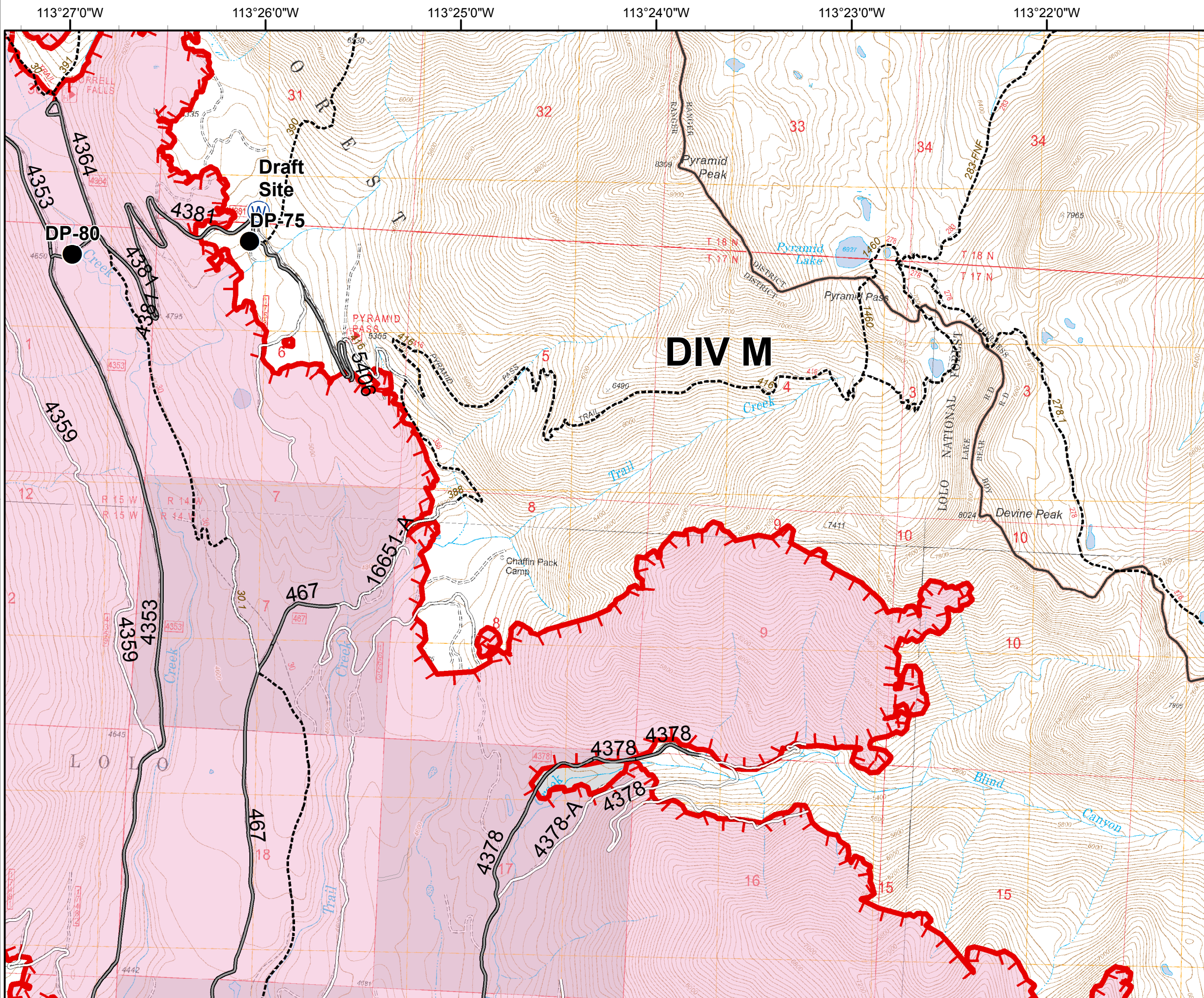
MT-LNF-001464

OPS DIV Map

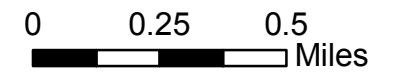
August 14, 2017

11,277 Acres (IR 8/12/17 @ 2253)

DIV M - South



- Structures
- Drop Point
- ⊕ Water Source
- ┌─┴─┘ Uncontrolled Fire Edge
- Fire Area



Rice Ridge Fire

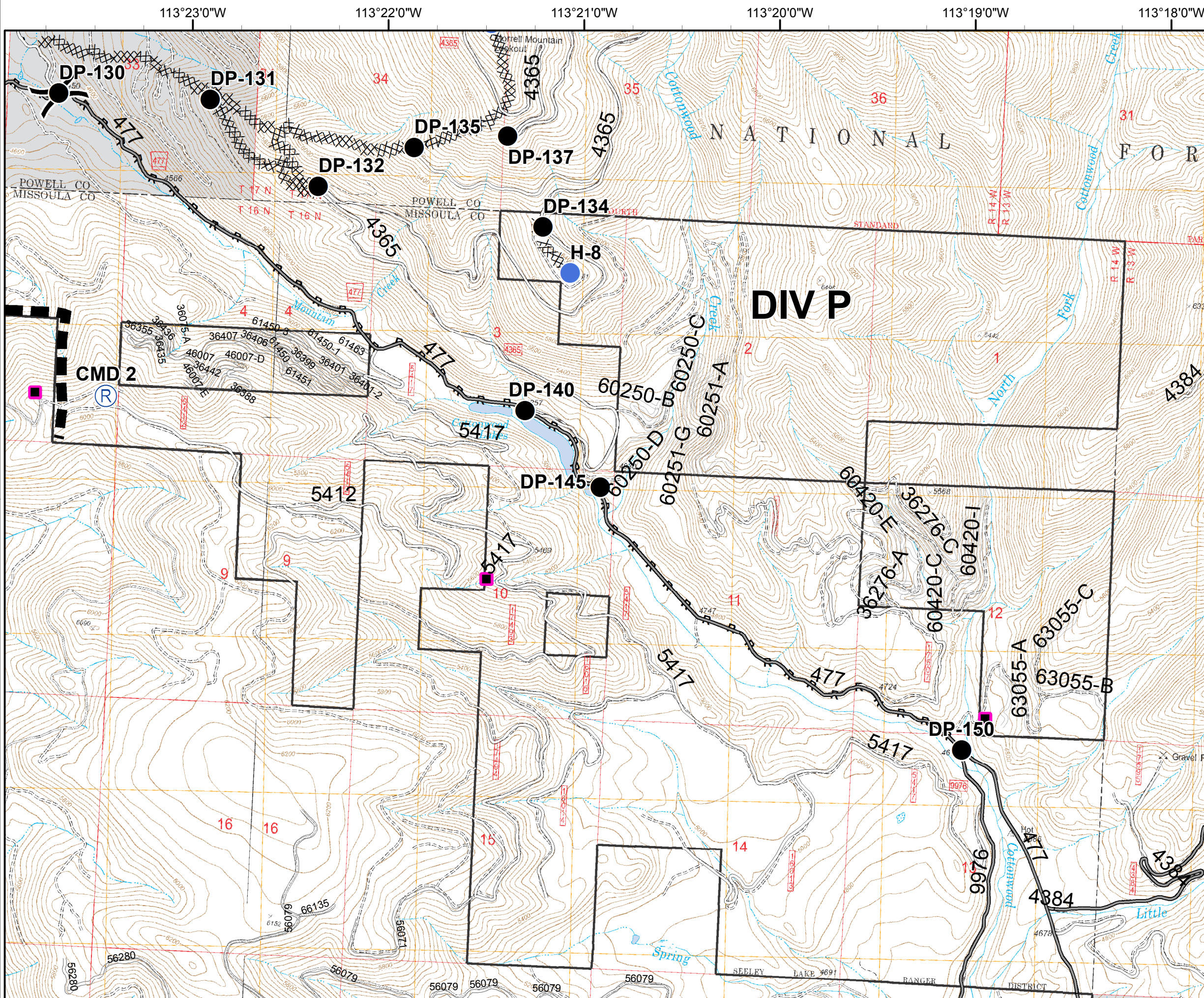
MT-LNF-001464

OPS DIV Map

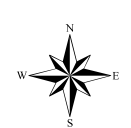
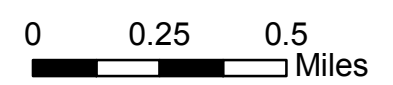
August 14, 2017

11,277 Acres (IR 8/12/17 @ 2253)

DIV P



- Division
- Structures
- Drop Point
- Helispot
- Repeater
- Completed Dozer Line
- R · R · Road as Completed Line
- Planned Fire Line



Rice Ridge Fire

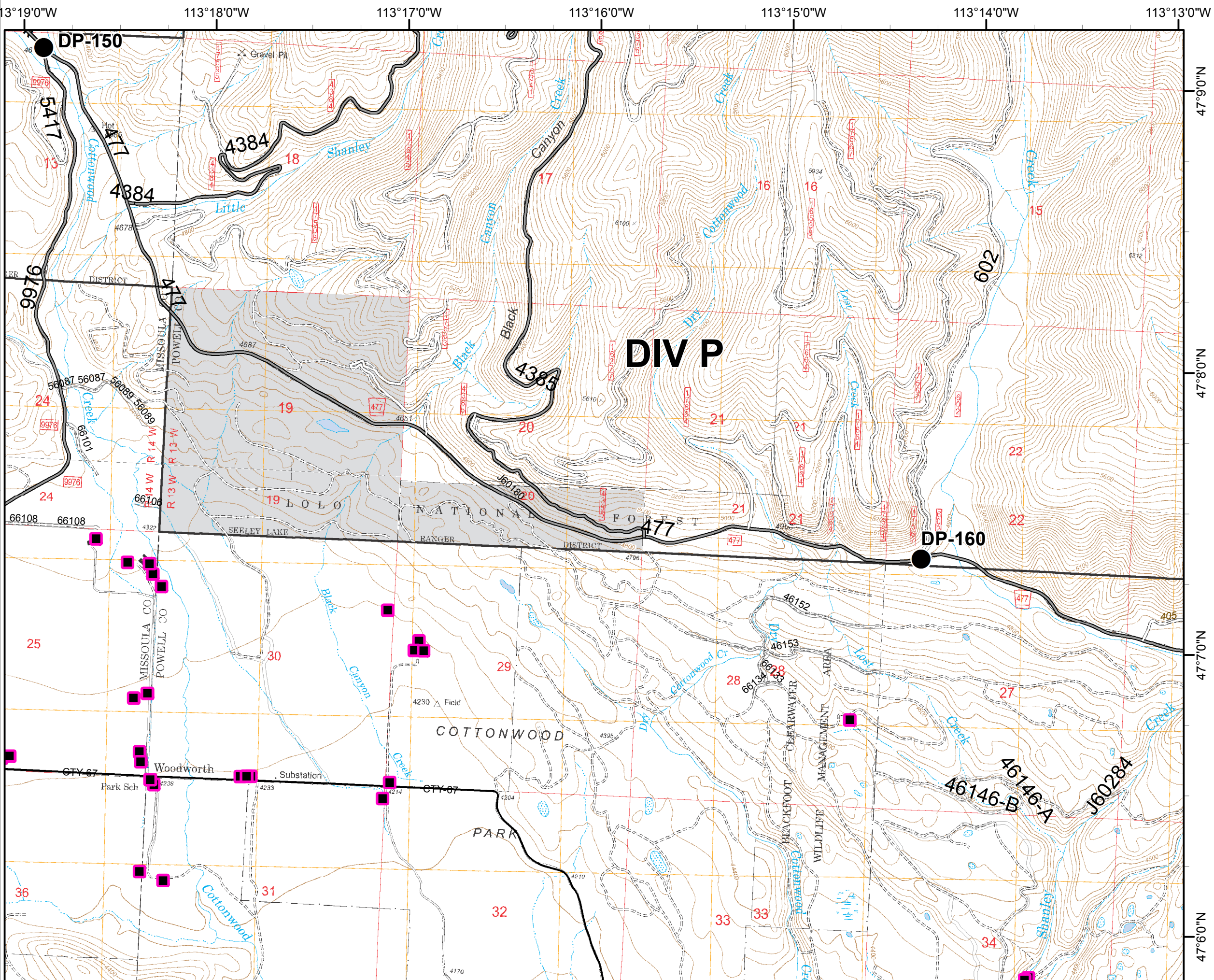
MT-LNF-001464

OPS DIV Map

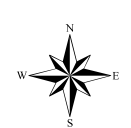
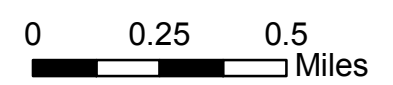
August 14, 2017

11,277 Acres (IR 8/12/17 @ 2253)

DIV P



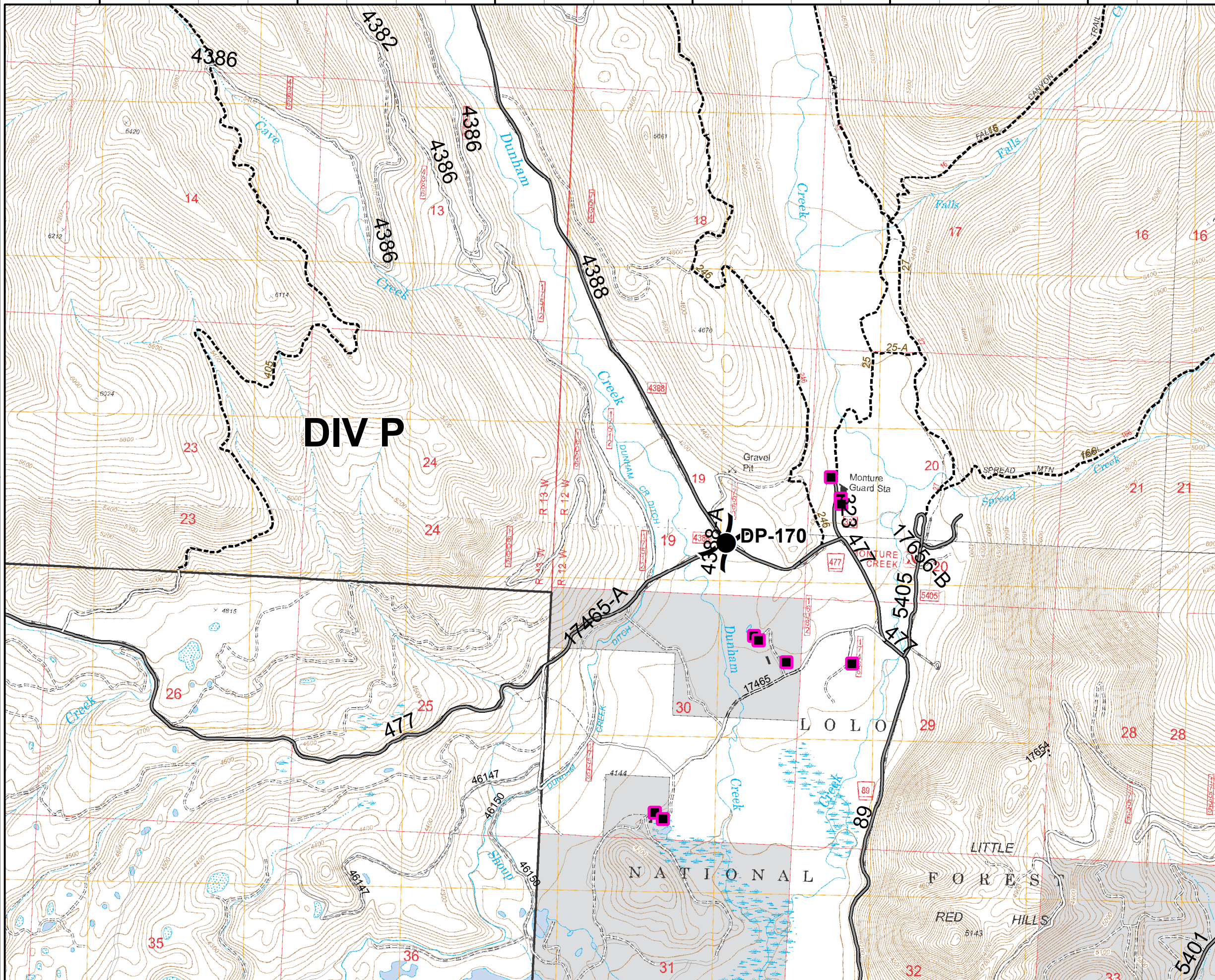
- Structures
- Drop Point
- R - R - Road as Completed Line



113°13'0"W 113°12'0"W 113°11'0"W 113°10'0"W 113°9'0"W 113°8'0"W

Rice Ridge Fire

MT-LNF-001464
OPS DIV Map
August 14, 2017
11,277 Acres (IR 8/12/17 @ 2253)
DIV P



47°9'0"N
47°8'0"N
47°7'0"N

- Division
- Structures
- Drop Point

