

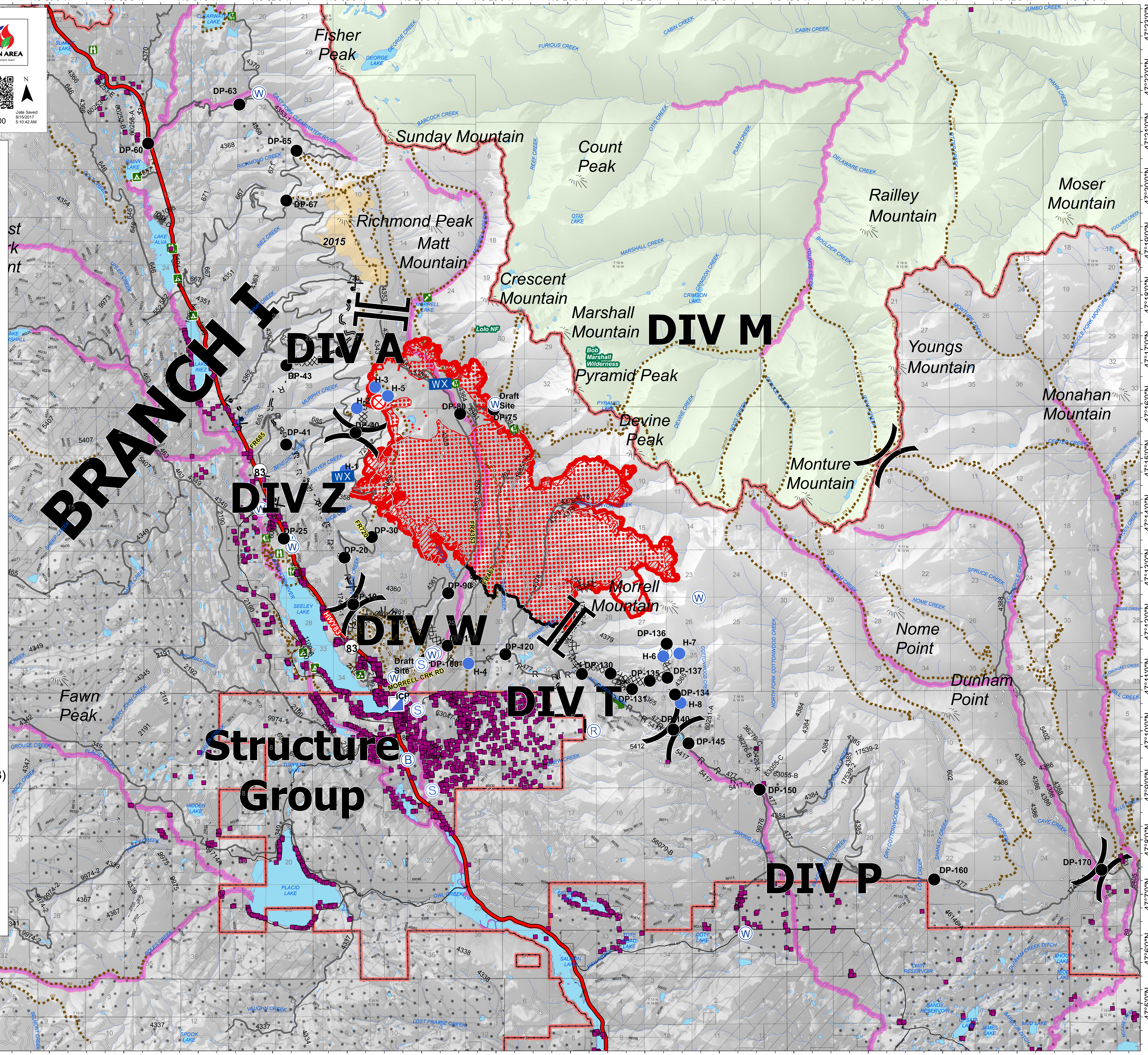
Briefing Map RICE RIDGE FIRE

MT-LNF-001464
August 15, 2017
11,754 Acres (MMA Flight 8/14/17 @ 1500)



1:40,000
Date Saved: 8/15/2017 5:10:42 AM

- Branch
- Division
- Drop Point
- Fire Origin
- Helispot
- Incident Base
- Incident Command Post
- Mobile Weather Unit
- Repeater
- Staging Area
- Water Source
- Campground
- Lookout
- Point of Interest
- Ranger Station
- Trailhead
- Viewing Area
- Uncontrolled Fire Edge
- Completed Dozer Line
- Completed Line
- R - R - Road as Completed Line
- MW Line Break Completed
- Planned Fire Line
- Proposed Dozer Line
- IR Isolated Heat Source (08/12/17 - 2253)
- IR Scattered Heat (08/12/17 - 2253)
- IR Intense Heat (08/12/17 - 2253)
- Research Forest
- Administrative Boundary
- Wilderness Area
- Ownership
 - Private
 - State of Montana



BRANCH I

Structure Group

DIV M

DIV P

DIV Z

DIV W

DIV T