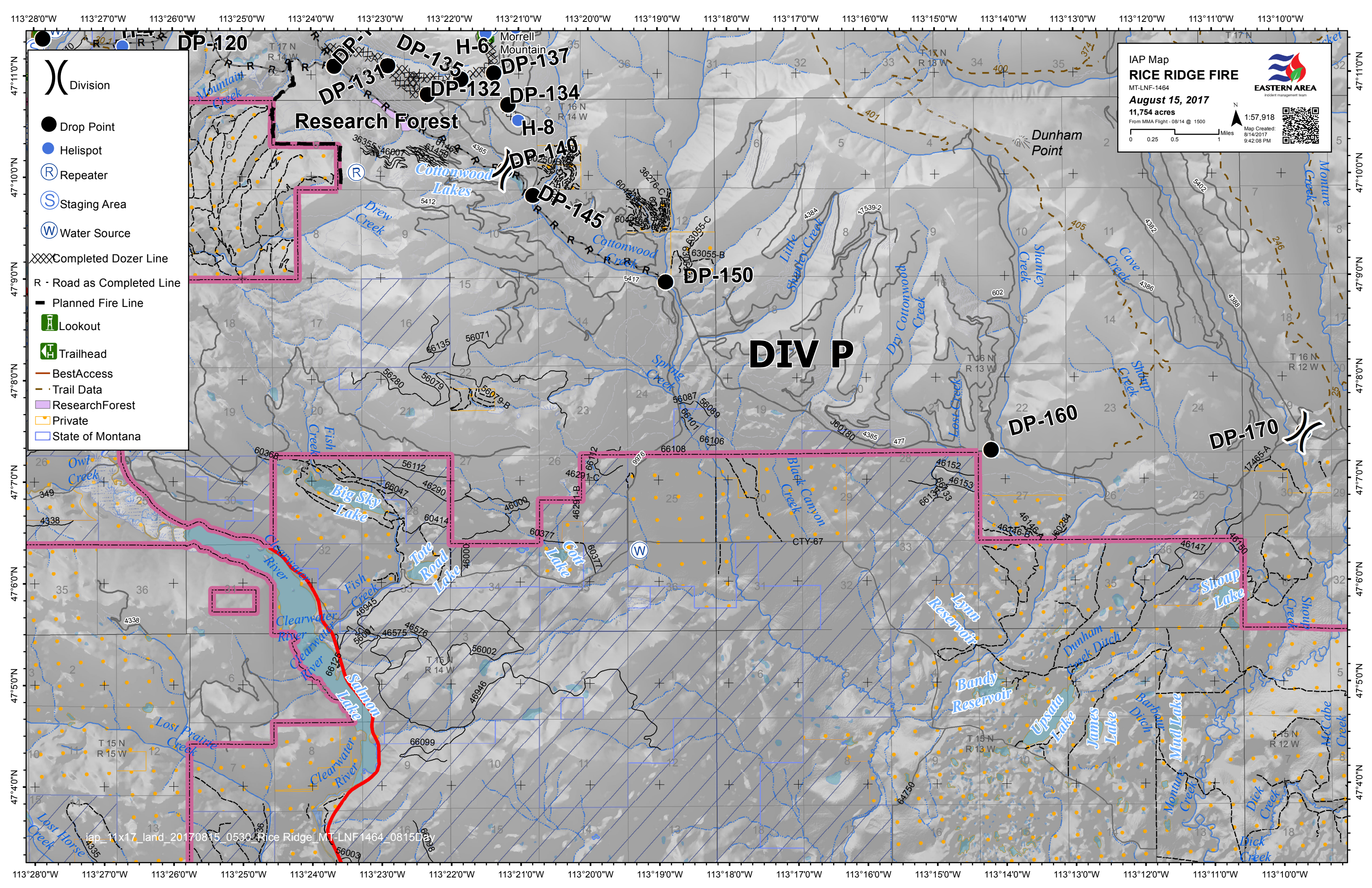


IAP Map
RICE RIDGE FIRE
 MT-LNF-1464
August 15, 2017
 11,754 acres
 From MMA Flight -08/14 @ 1500

EASTERN AREA
 Incident Management Team


1:57,918
 Map Created: 8/14/2017 9:42:08 PM

- () Division
- [] Branch
- ⊗ Fire Origin (07/24/2017)
- Drop Point
- Helispot
- ▢ Incident Command Post
- WX Mobile Weather Unit
- Ⓡ Repeater
- Ⓢ Staging Area
- Ⓦ Water Source
- Uncontrolled Fire Edge
- ⊗ Completed Dozer Line
- Completed Line
- R - Road as Completed Line
- ⊗ Line Break Completed
- Planned Fire Line
- ⊗ Proposed Dozer Line
- FirePolygon
- 🏠 Ranger Station
- 🏕 Campground
- 👁 Lookout
- 📍 Point of Interest
- 🚶 Trailhead
- 👁 Viewing Area
- BestAccess
- Trail Data
- ResearchForest
- Private
- State of Montana



- () Division
- Drop Point
- Helispot
- Ⓡ Repeater
- Ⓢ Staging Area
- Ⓦ Water Source
- XXXX Completed Dozer Line
- R - Road as Completed Line
- Planned Fire Line
- 🏠 Lookout
- 🏠 Trailhead
- Best Access
- Trail Data
- 🌲 Research Forest
- 🏠 Private
- 🇺🇸 State of Montana

IAP Map
RICE RIDGE FIRE
MT-LNF-1464
August 15, 2017
11,754 acres
From MMA Flight -08/14 @ 1500



EASTERN AREA
Incident management team

1:57,918
Map Created: 8/14/2017 9:42:06 PM

