

Rice Ridge Fire

MT-LNF-001464

OPS DIV Map

August 15, 2017

11,754 Acres (MMA Flight 8/14/17 @ 1500)

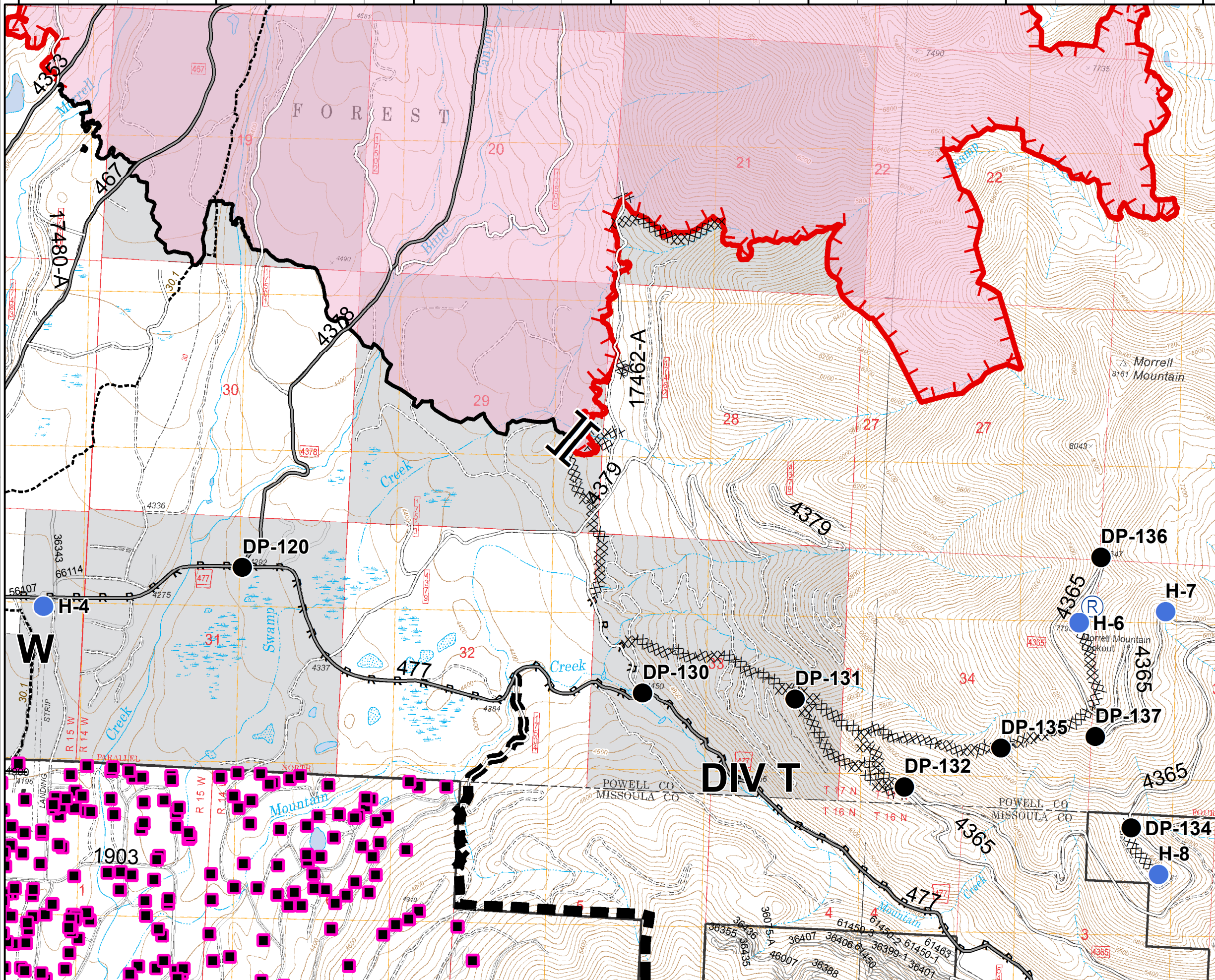
DIV T

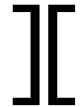




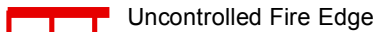
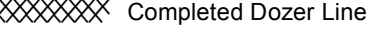

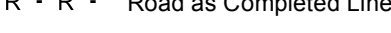
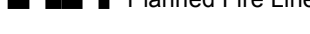

113°27'0"W 113°26'0"W 113°25'0"W 113°24'0"W 113°23'0"W 113°22'0"W 113°21'0"W

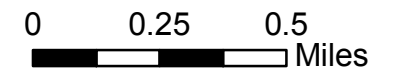
47°13'0"N

47°12'0"N

47°11'0"N



-  Branch
-  Structures
-  Drop Point
-  Helispot
-  Repeater
-  Uncontrolled Fire Edge
-  Completed Dozer Line
-  Completed Line
-  R - R - Road as Completed Line
-  Planned Fire Line
-  Fire Area



Rice Ridge Fire

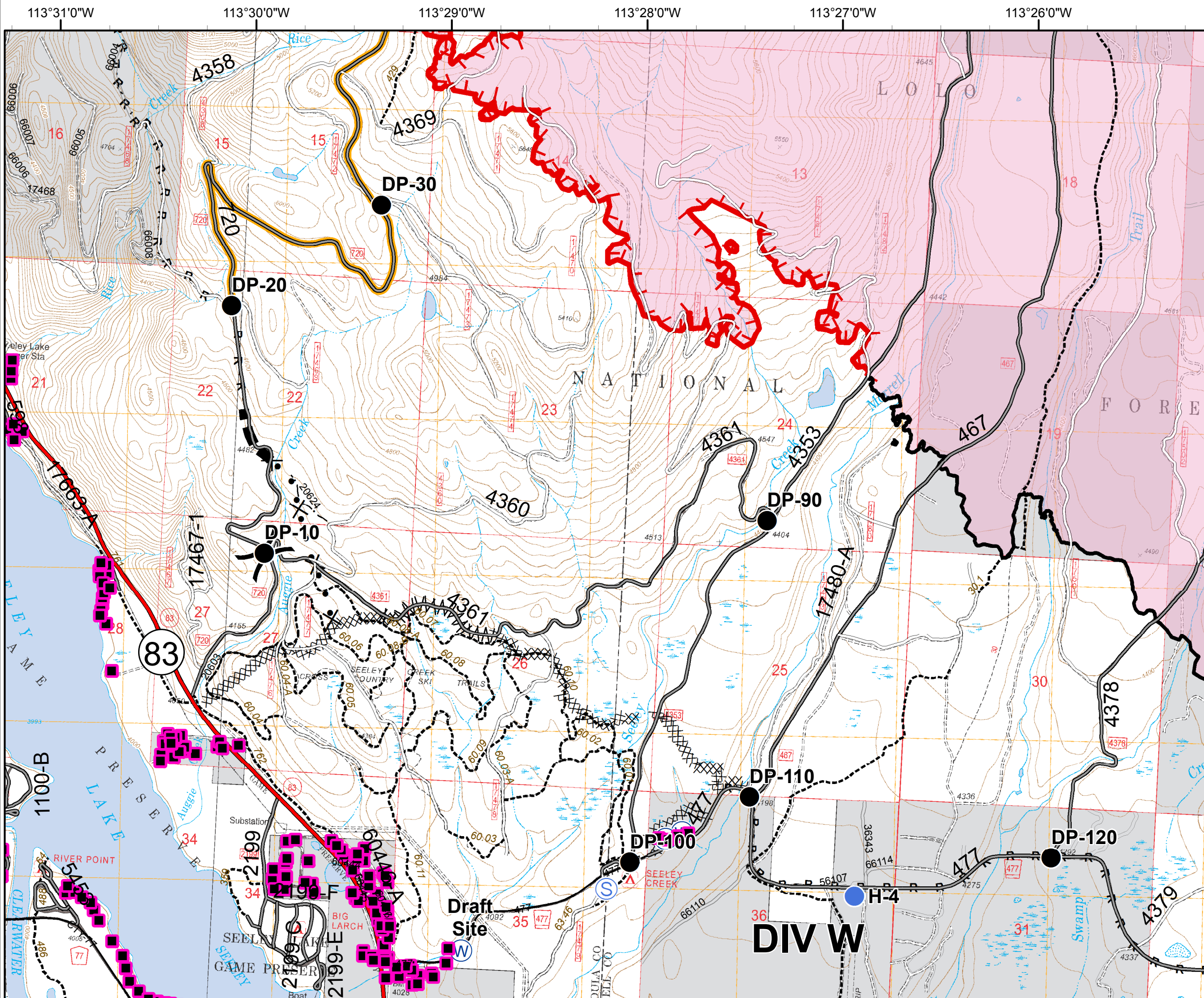
MT-LNF-001464












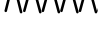


OPS DIV Map

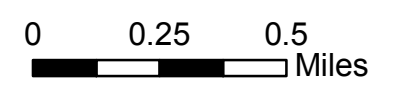
August 15, 2017

11,754 Acres (MMA Flight 8/14/17 @ 1500)

DIV W



-  Division
-  Structures
-  Drop Point
-  Helispot
-  Staging Area
-  Water Source
-  Road Closure (Need Div Sup Approval)
-  Uncontrolled Fire Edge
-  Completed Dozer Line
-  Completed Line
-  R · R · Road as Completed Line
-  Line Break Completed
-  Planned Fire Line
-  Proposed Dozer Line
-  Fire Area



Rice Ridge Fire

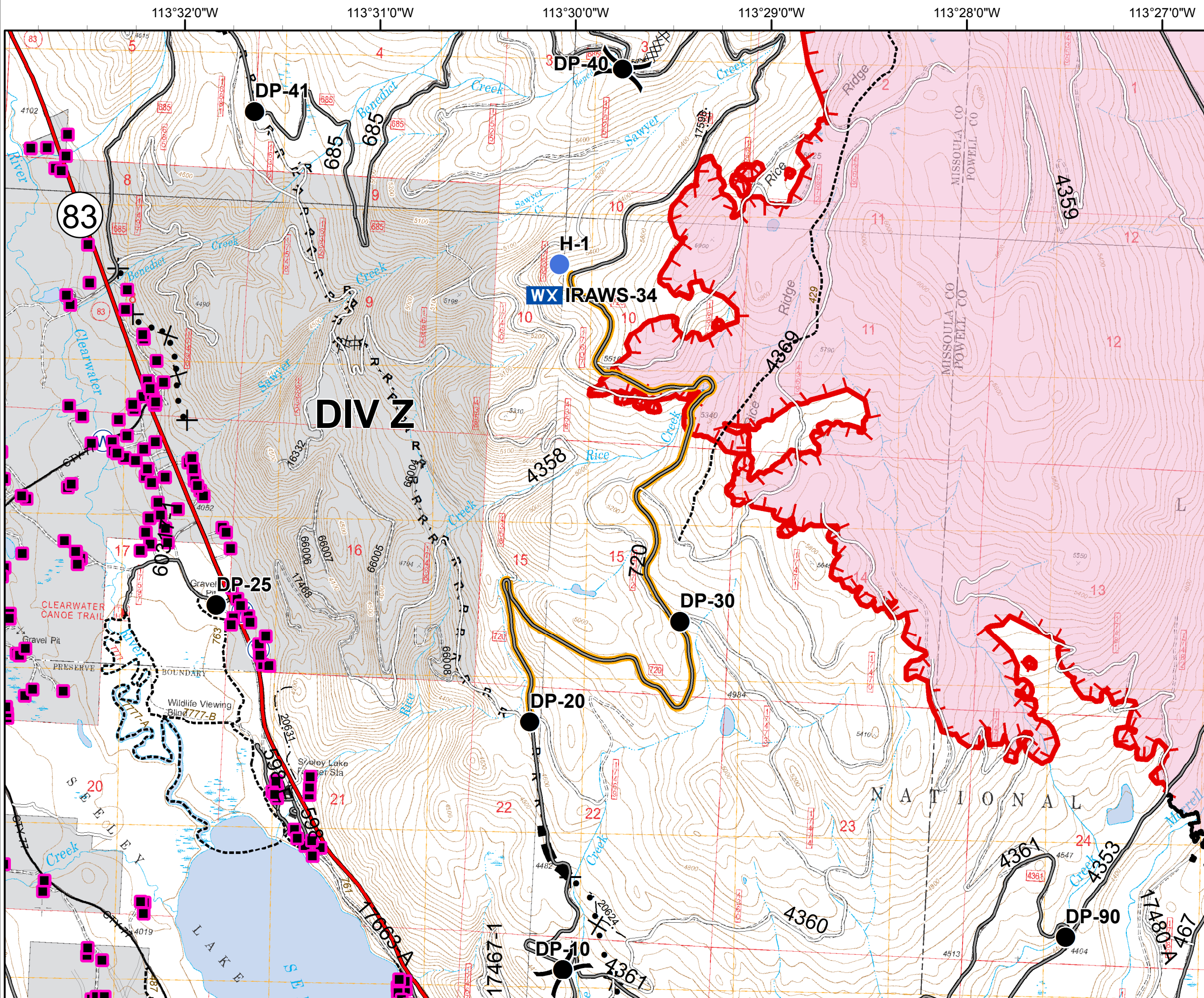
MT-LNF-001464















OPS DIV Map

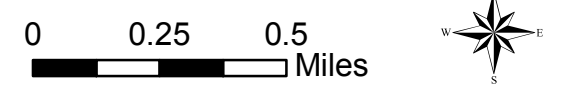
August 15, 2017

11,754 Acres (MMA Flight 8/14/17 @ 1500)

DIV Z



-  Division
-  Structures
-  Drop Point
-  Helispot
-  Mobile Weather Unit
-  Water Source
-  Road Closure (Need Div Sup Approval)
-  Uncontrolled Fire Edge
-  Completed Dozer Line
-  Completed Line
-  Road as Completed Line
-  Planned Fire Line
-  Proposed Dozer Line
-  Fire Area



113°33'0"W 113°32'0"W 113°31'0"W 113°30'0"W 113°29'0"W 113°28'0"W

Rice Ridge Fire

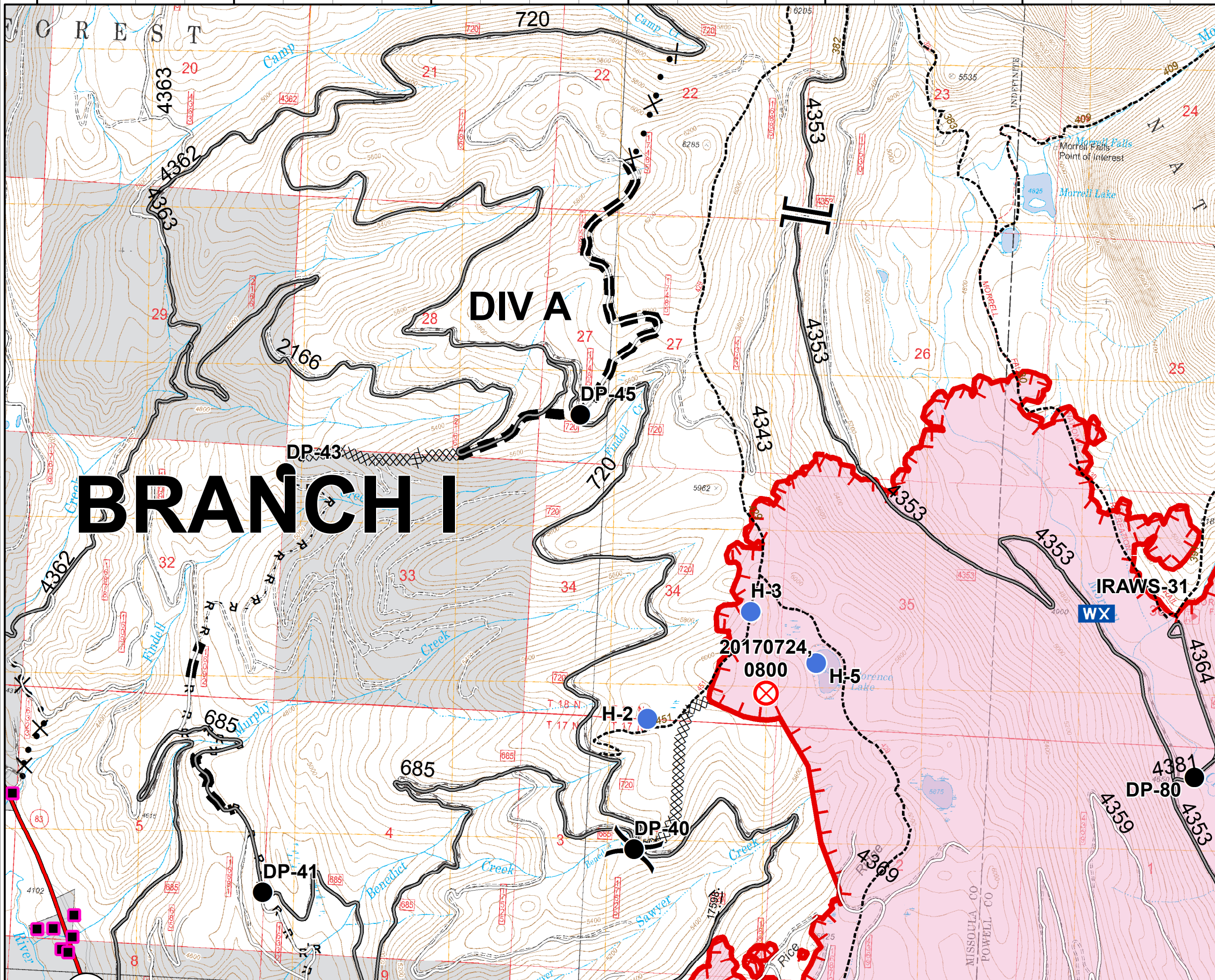
MT-LNF-001464

OPS DIV Map

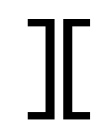
August 15, 2017

11,754 Acres (MMA Flight 8/14/17 @ 1500)

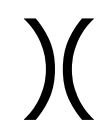
DIV A



47°18'0"N
47°17'0"N
47°16'0"N



Branch



Division



Structures



Drop Point



Fire Origin



Helispot



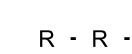
Mobile Weather Unit



Uncontrolled Fire Edge



Completed Dozer Line



R · R · Road as Completed Line



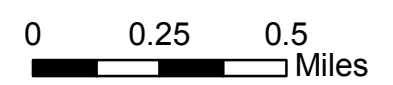
Planned Fire Line



Proposed Dozer Line



Fire Area



Rice Ridge Fire

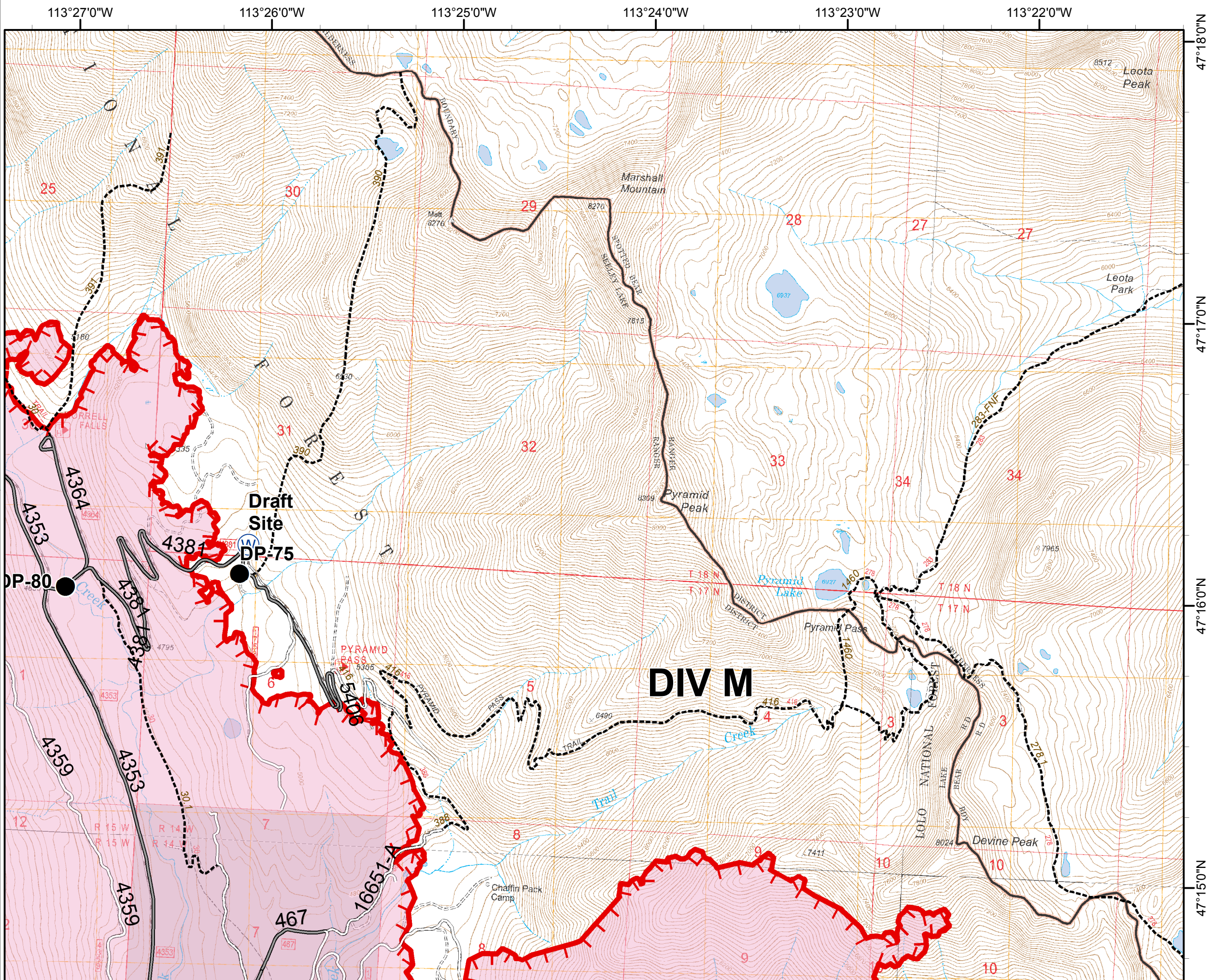
MT-LNF-001464

OPS DIV Map

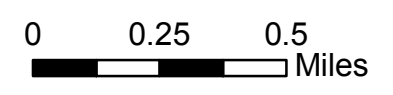
August 15, 2017

11,754 Acres (MMA Flight 8/14/17 @ 1500)

DIV M - North



- Structures
- Drop Point
- Water Source
- Uncontrolled Fire Edge
- Fire Area



Rice Ridge Fire

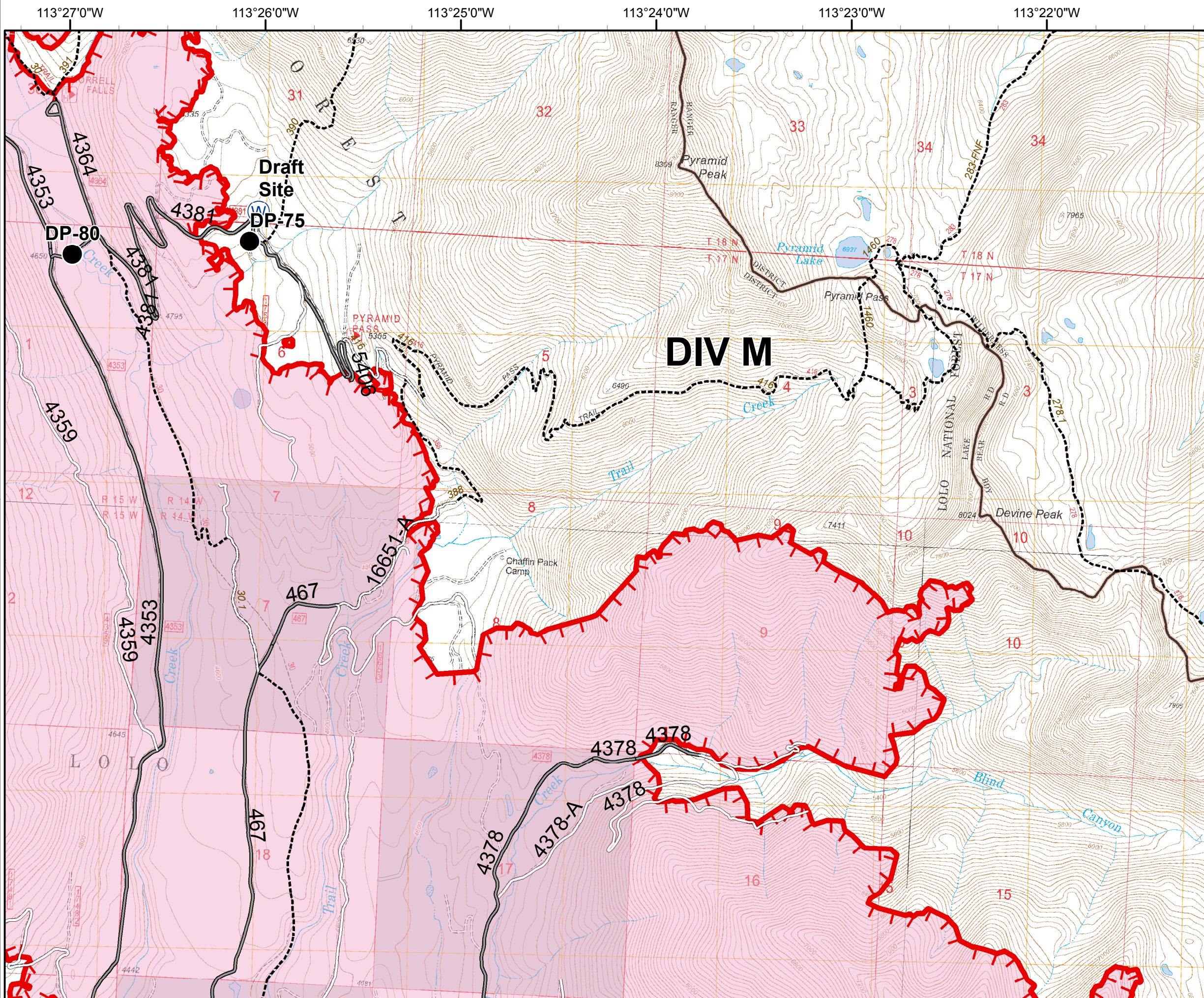
MT-LNF-001464






OPS DIV Map

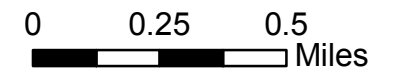
August 15, 2017

11,754 Acres (MMA Flight 8/14/17 @ 1500)

DIV M - South



-  Structures
-  Drop Point
-  Water Source
-  Uncontrolled Fire Edge
-  Fire Area



Rice Ridge Fire

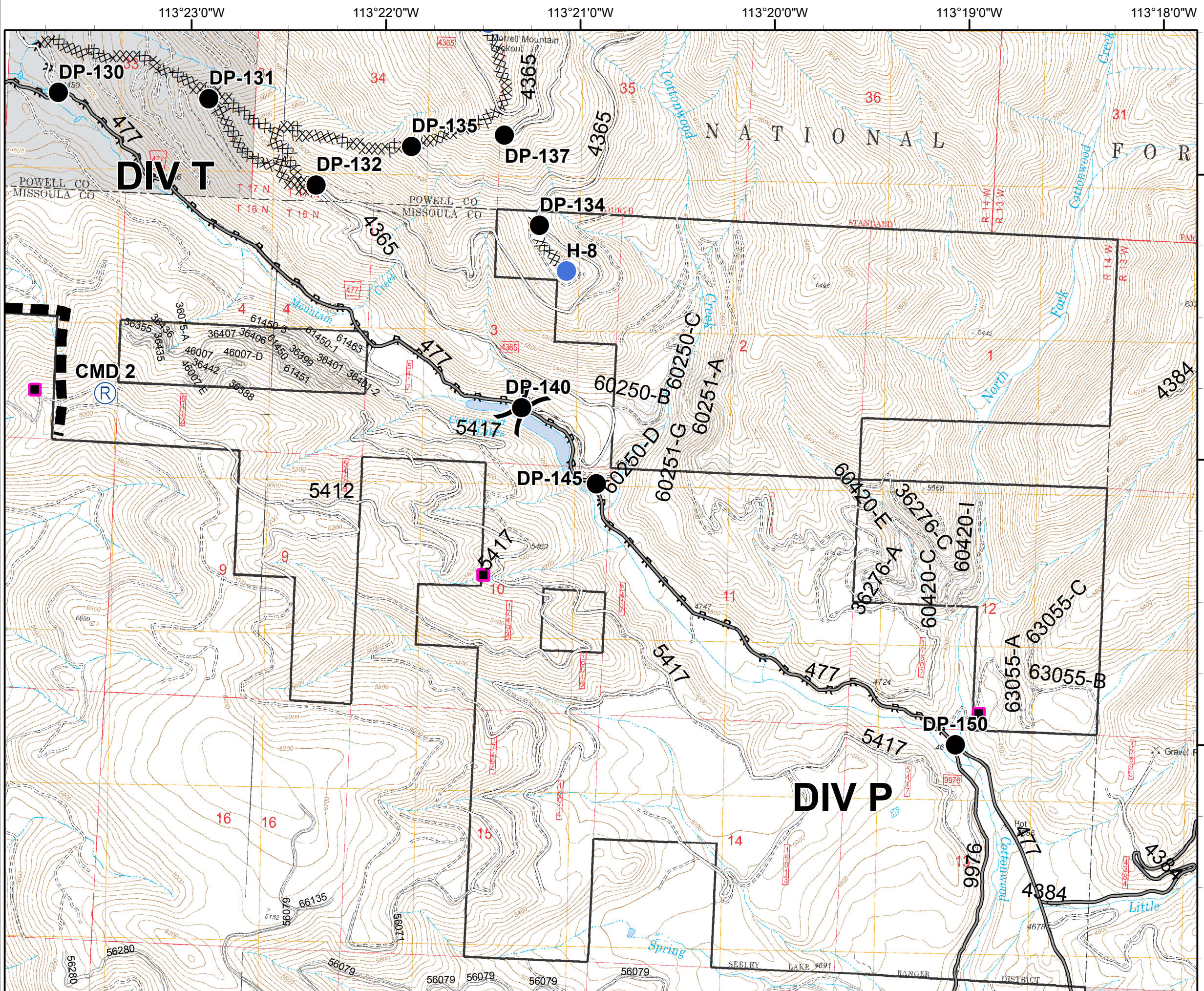
MT-LNF-001464

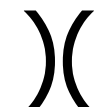




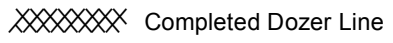
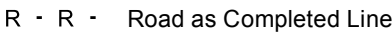
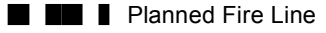
OPS DIV Map

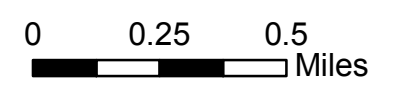
August 15, 2017

11,754 Acres (MMA Flight 8/14/17 @ 1500)

DIV P



-  Division
-  Structures
-  Drop Point
-  Helispot
-  Repeater
-  Completed Dozer Line
-  R · R · Road as Completed Line
-  Planned Fire Line



Rice Ridge Fire

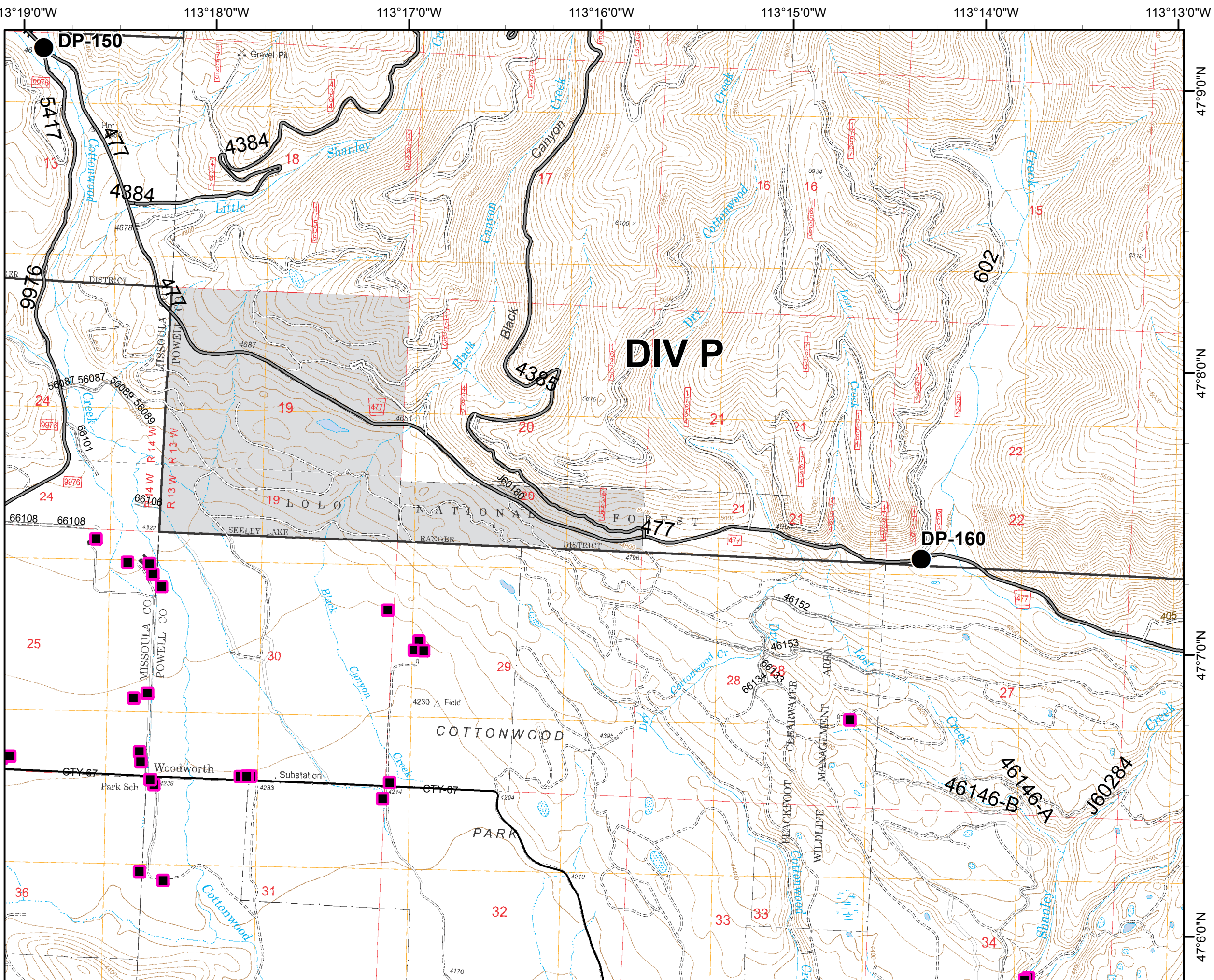
MT-LNF-001464

OPS DIV Map

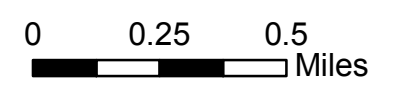
August 15, 2017

11,754 Acres (MMA Flight 8/14/17 @ 1500)

DIV P



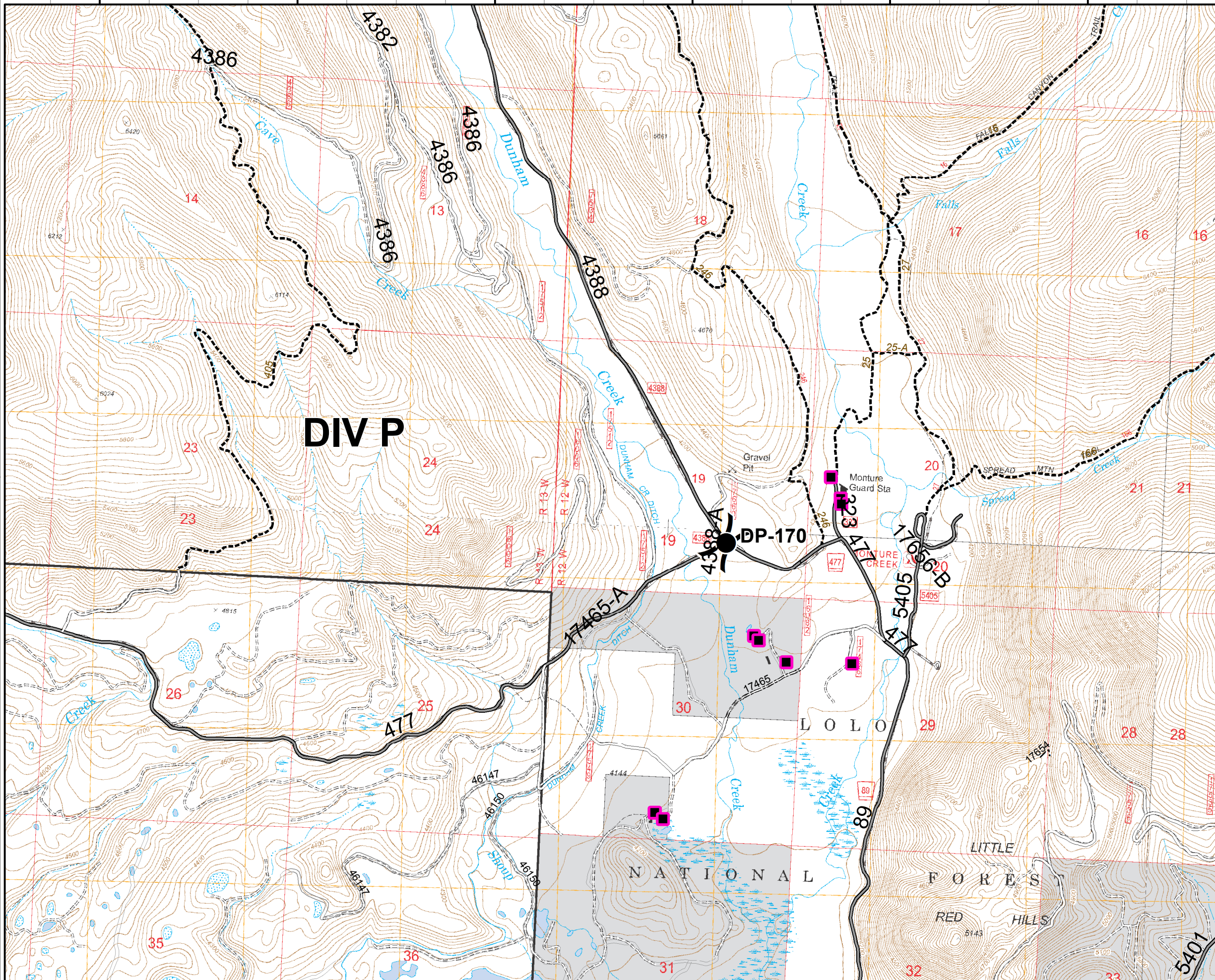
- Structures
- Drop Point
- R - R - Road as Completed Line



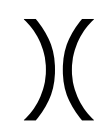


113°13'0"W 113°12'0"W 113°11'0"W 113°10'0"W 113°9'0"W 113°8'0"W

Rice Ridge Fire

MT-LNF-001464
OPS DIV Map
August 15, 2017
11,754 Acres (MMA Flight 8/14/17 @ 1500)
DIV P



47°9'0"N
47°8'0"N
47°7'0"N

-  Division
-  Structures
-  Drop Point

