

Rice Ridge Fire

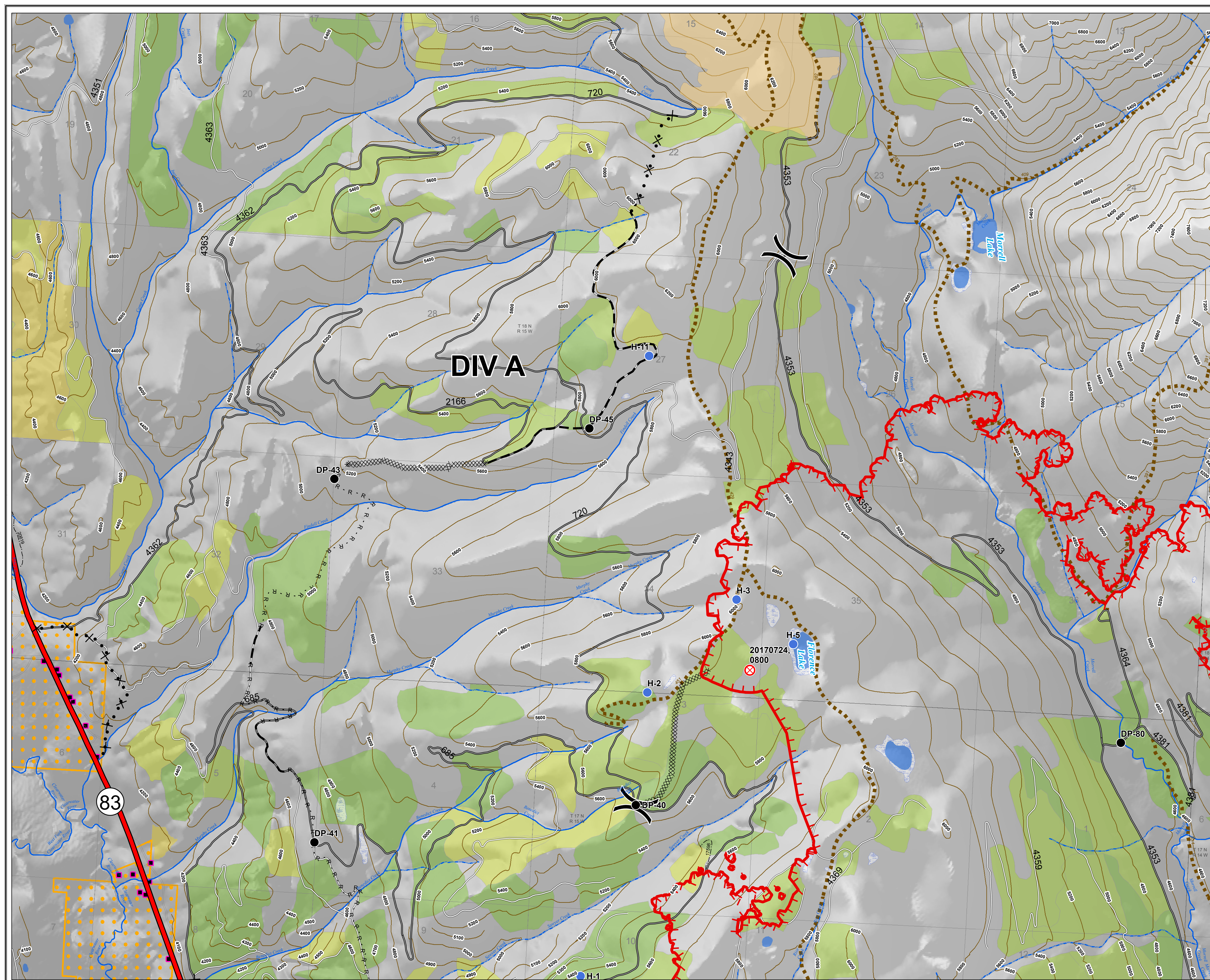
MT-LNF-001464

OPS Map

DIV A

August 16, 2017

12,091 Acres (IR Flight 8/16/17 @ 0515)



Legend

- Drop Point
- ⊗ Fire Origin
- Helispot
- ⌘ Division
- ▬ Uncontrolled Fire Edge
- ▨ Completed Dozer Line
- R · R · R · R Road as Completed Line
- - - Planned Fire Line
- ⊗ · ⊗ Proposed Dozer Line

