

# Briefing Map RICE RIDGE FIRE

MT-LNF-001464  
August 16, 2017  
11,857 Acres (MMA Flight 8/15/17 @ 1810)



1:40,000  
Date Saved: 8/16/2017 5:40:42 AM

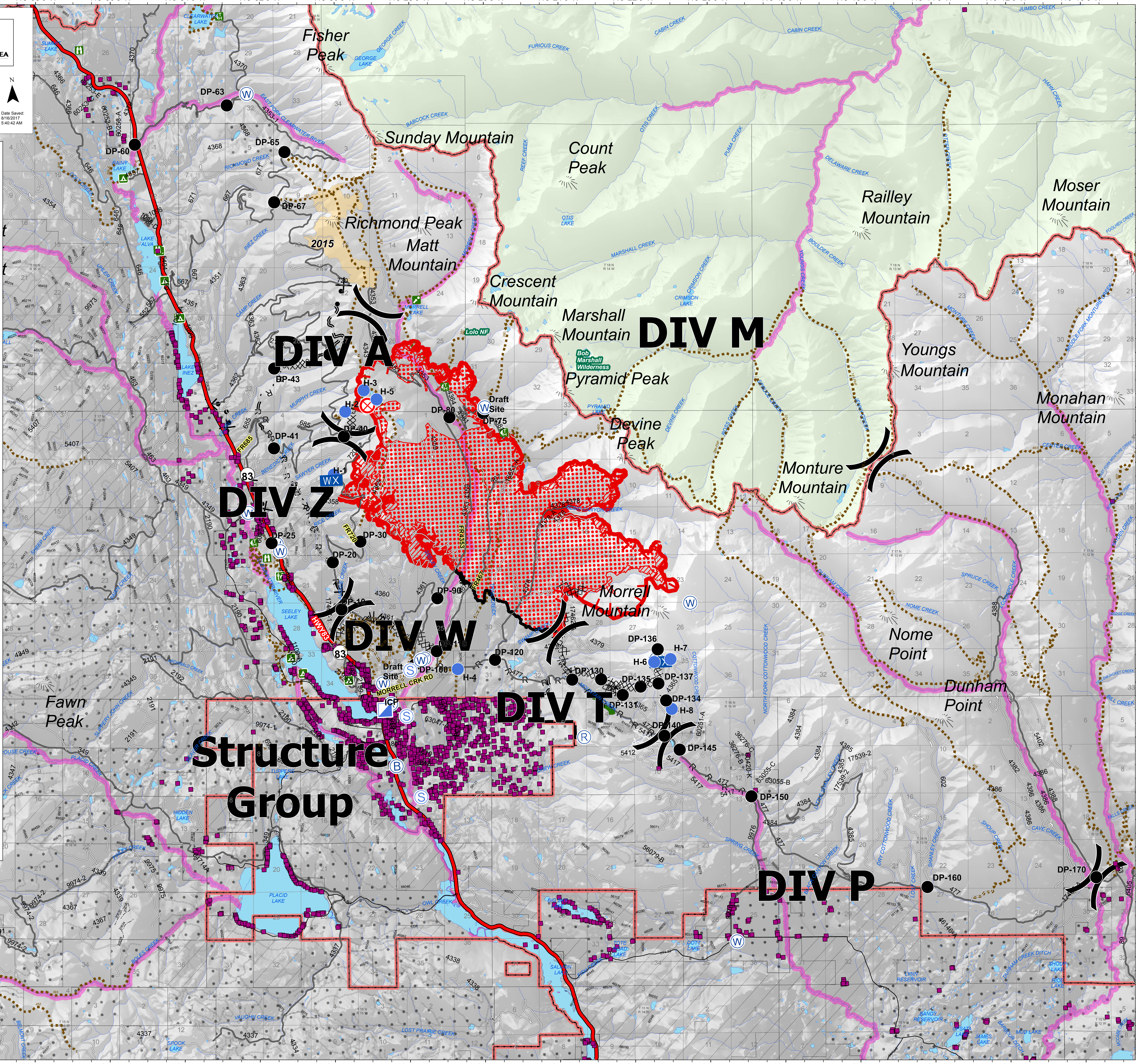
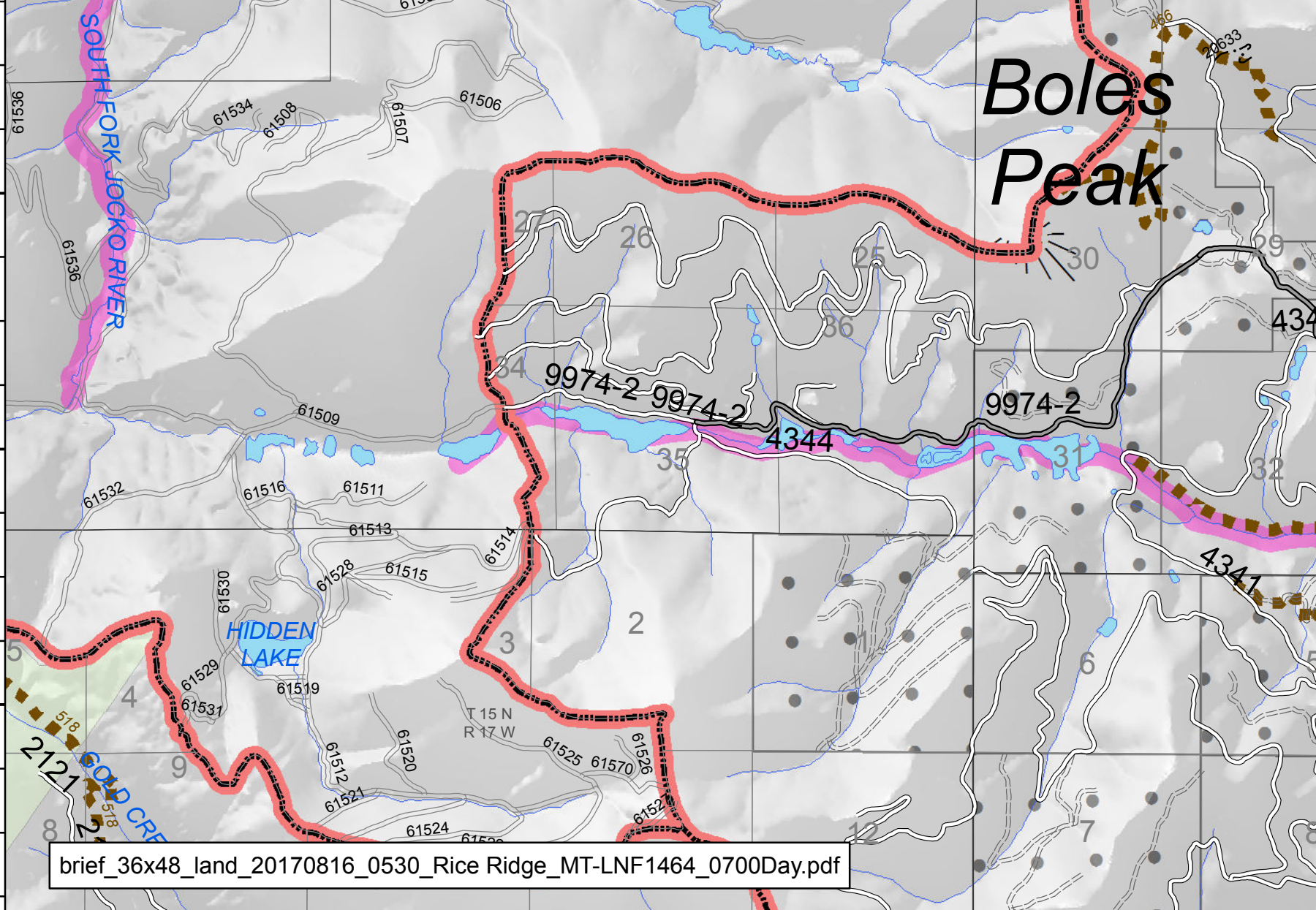
- Drop Point
- ⊗ Fire Origin
- Helispot
- Ⓟ Incident Base
- ▢ Incident Command Post
- WX Mobile Weather Unit
- Ⓡ Repeater
- Ⓢ Staging Area
- Ⓜ Water Source
- Ⓜ Campground
- Ⓜ Lookout
- Ⓜ Point of Interest
- Ⓜ Ranger Station
- Ⓜ Trailhead
- Ⓜ Viewing Area

)) Division

- Uncontrolled Fire Edge
- ⊗ Completed Dozer Line
- Completed Line
- R - R - Road as Completed Line
- ⊗ Line Break Completed
- Planned Fire Line
- ⊗ Proposed Dozer Line
- MMA Isolated Heat Source (8/15/17 - 1810)
- ▒ IR Scattered Heat (08/12/17 - 2253)
- ▒ IR Intense Heat (08/12/17 - 2253)
- Research Forest
- Administrative Boundary
- Wilderness Area

Ownership

- ▒ Private
- ▒ State of Montana



## Structure Group

## DIV M

## DIV A

## DIV Z

## DIV W

## DIV T

## DIV P