

Rice Ridge Fire

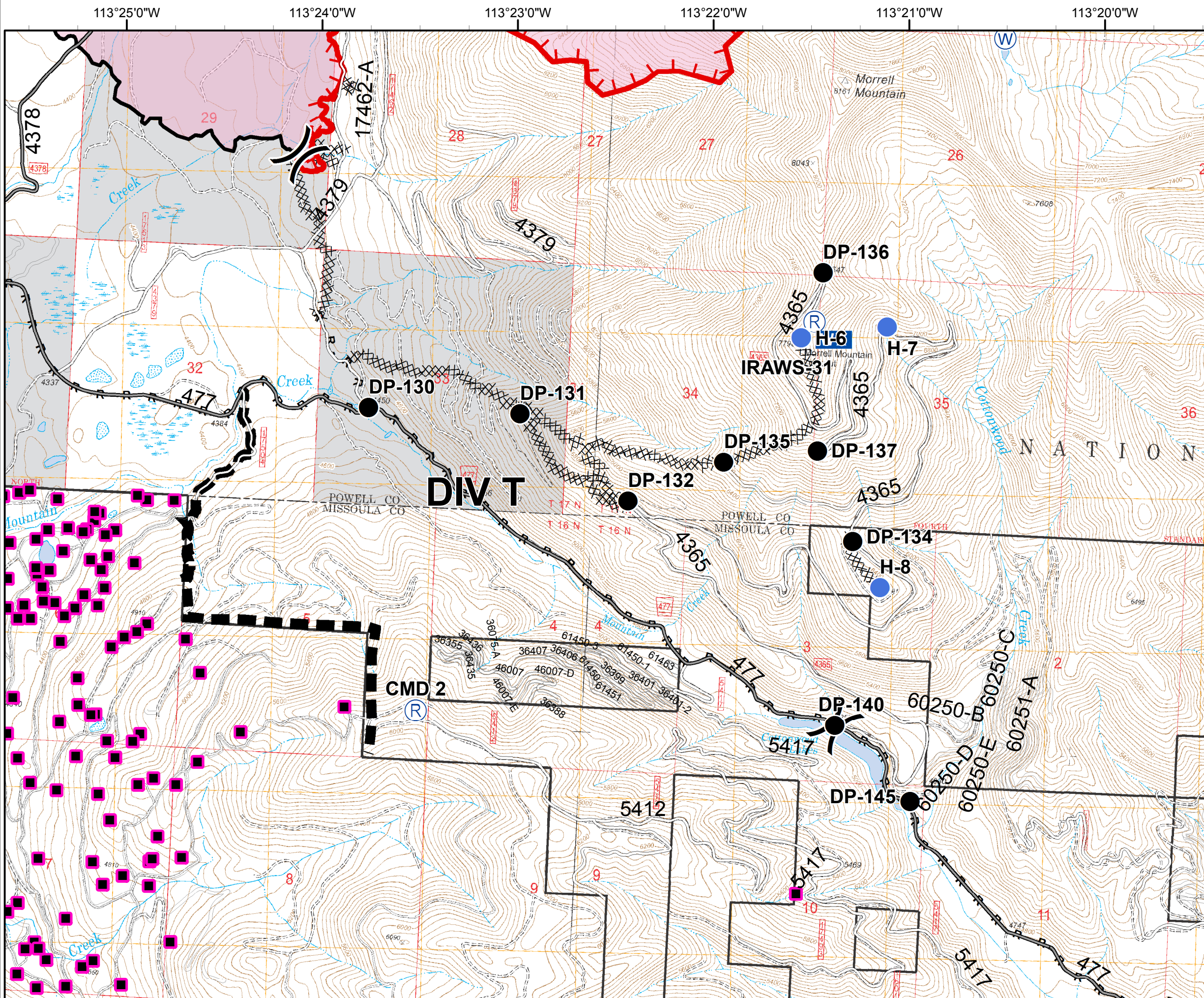
MT-LNF-001464

OPS DIV Map

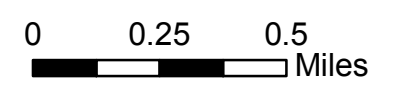
August 16, 2017

11,857 Acres (MMA Flight 8/15/17 @ 1810)

DIV T



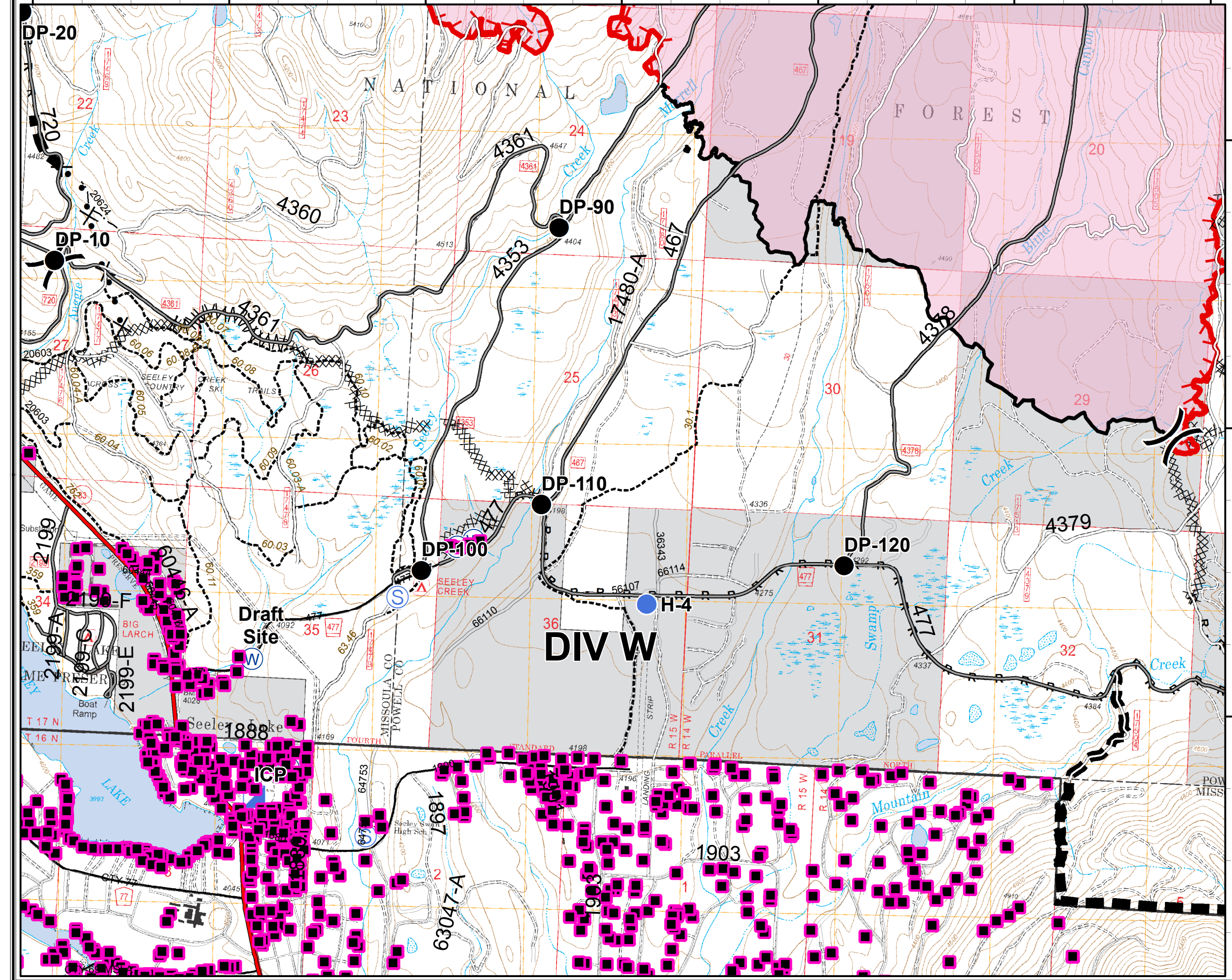
- Division
- Structures
- Drop Point
- Helispot
- Mobile Weather Unit
- Repeater
- Water Source
- Uncontrolled Fire Edge
- Completed Dozer Line
- Completed Line
- R - R - Road as Completed Line
- Planned Fire Line
- Fire Area



113°30'0"W 113°29'0"W 113°28'0"W 113°27'0"W 113°26'0"W 113°25'0"W 113°24'0"W

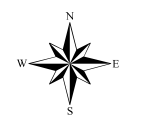
Rice Ridge Fire

MT-LNF-001464
 OPS DIV Map
 August 16, 2017
 11,857 Acres (MMA Flight 8/15/17 @ 1810)
DIV W



47°13'0"N
47°12'0"N
47°11'0"N

- Division
 - Structures
 - Drop Point
 - Helispot
 - Incident Command Post
 - Repeater
 - Staging Area
 - Water Source
 - Road Closure (Need Div Sup Approval)
 - Uncontrolled Fire Edge
 - Completed Dozer Line
 - Completed Line
 - R - R - Road as Completed Line
 - Line Break Completed
 - Planned Fire Line
 - Proposed Dozer Line
 - Fire Area
- 0 0.25 0.5 Miles



Rice Ridge Fire

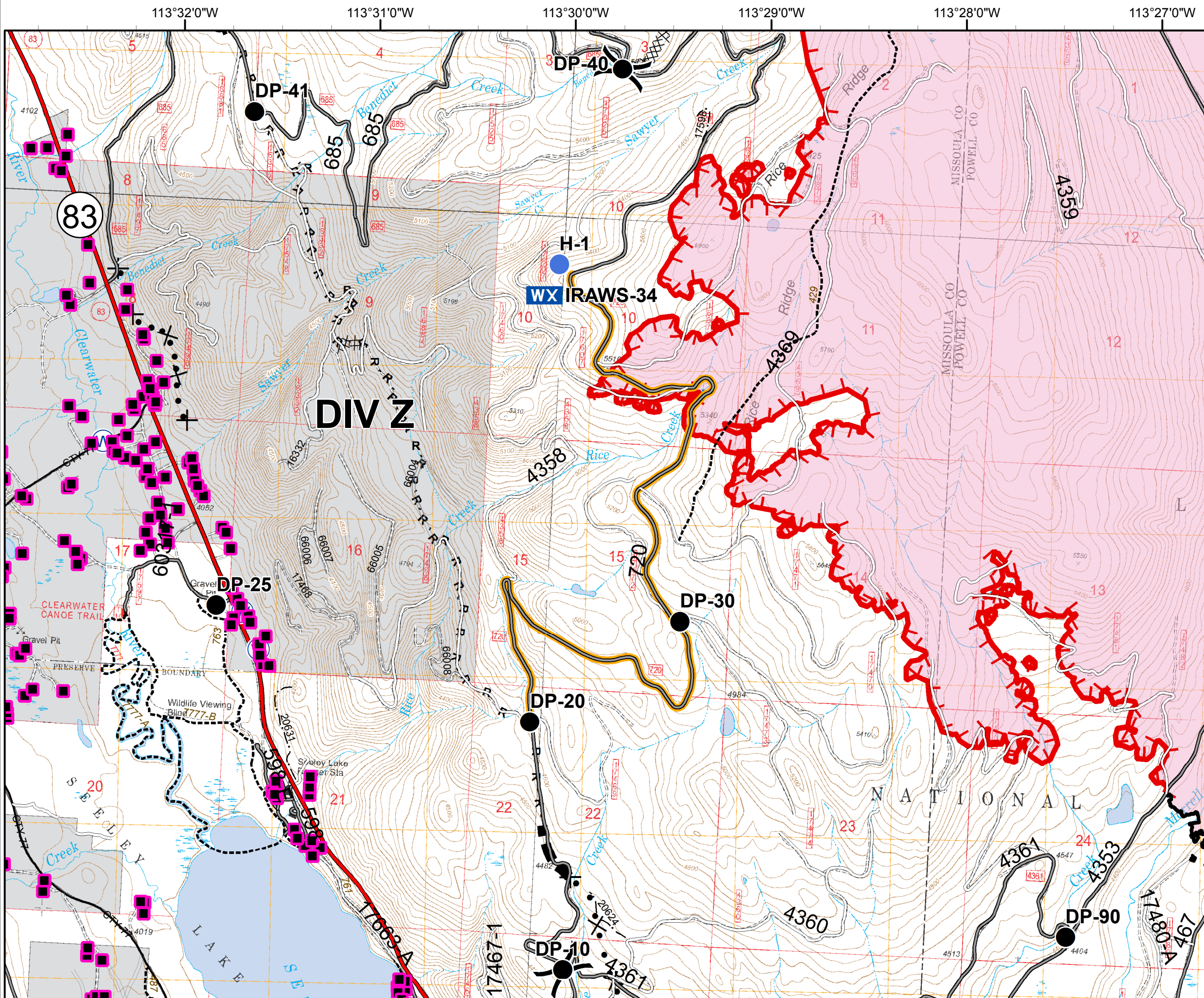
MT-LNF-001464

OPS DIV Map

August 16, 2017

11,857 Acres (MMA Flight 8/15/17 @ 1810)

DIV Z



- () Division
 - Structures
 - Drop Point
 - Helispot
 - WX Mobile Weather Unit
 - W Water Source
 - Road Closure (Need Div Sup Approval)
 - Uncontrolled Fire Edge
 - XXXXX Completed Dozer Line
 - Completed Line
 - R - R - Road as Completed Line
 - Planned Fire Line
 - ⊗ Proposed Dozer Line
 - Fire Area
- 0 0.25 0.5 Miles

Rice Ridge Fire

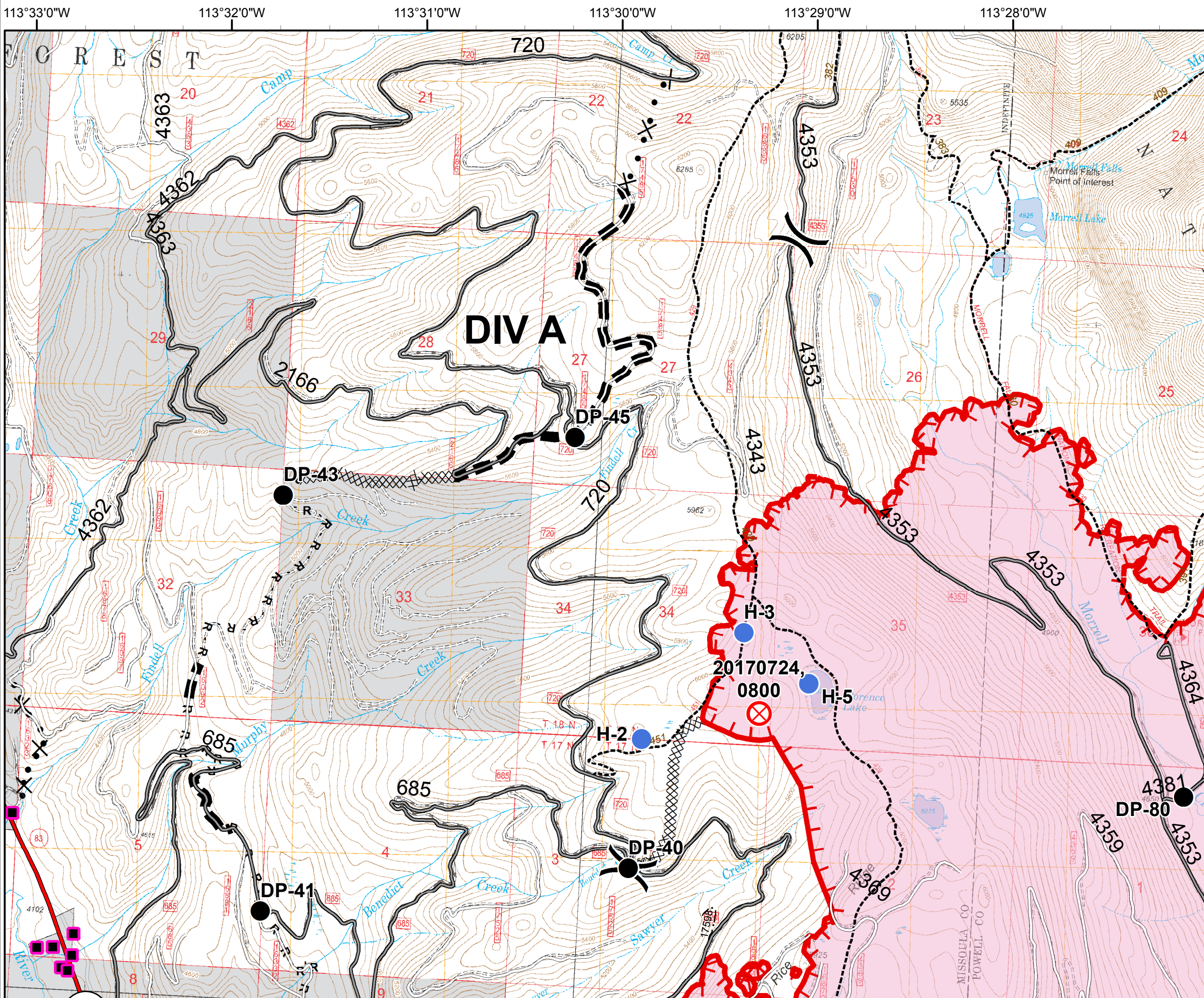
MT-LNF-001464

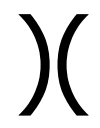






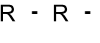


OPS DIV Map

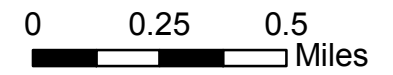
August 16, 2017

11,857 Acres (MMA Flight 8/15/17 @ 1810)

DIV A

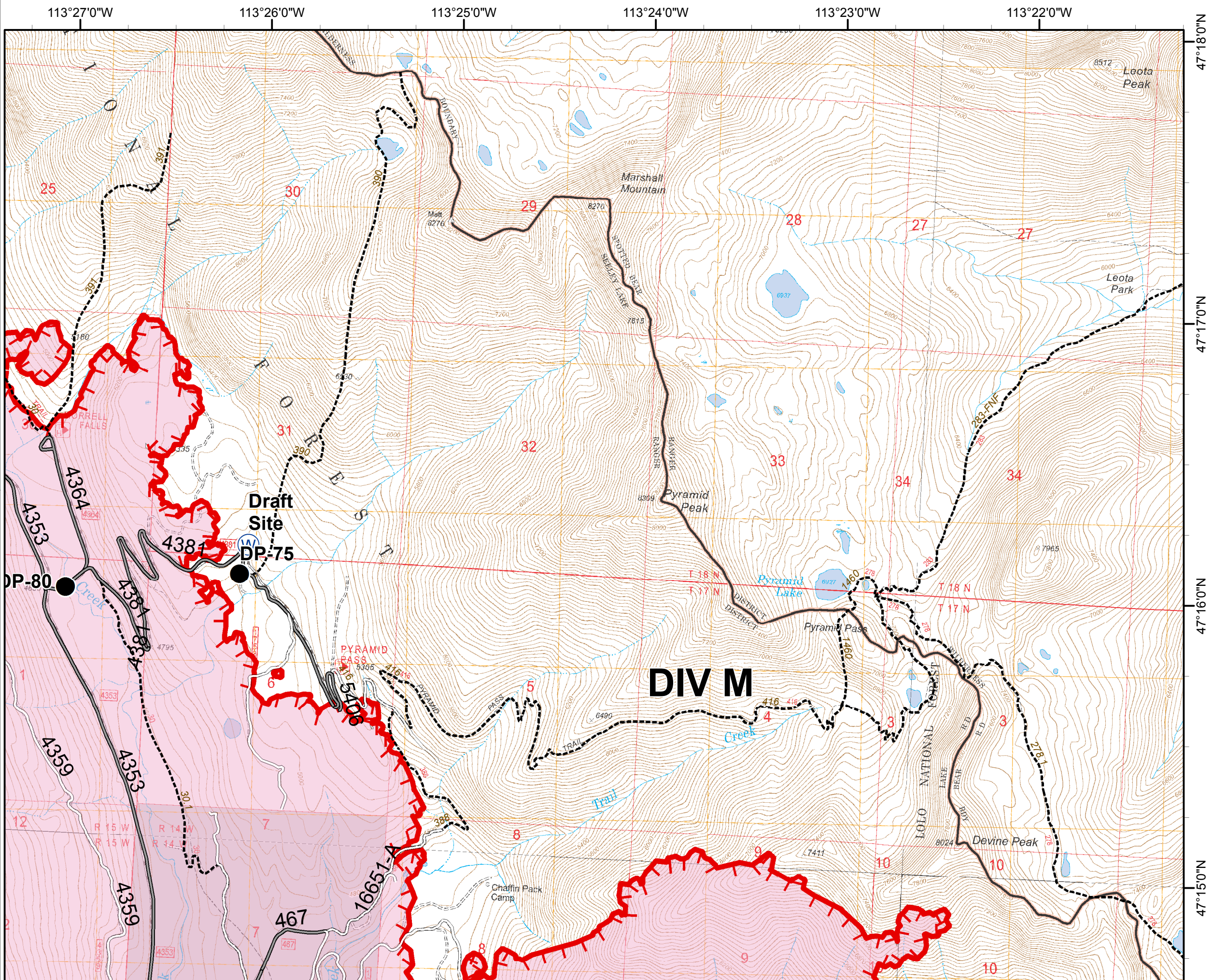


-  Division
-  Structures
-  Drop Point
-  Fire Origin
-  Helispot
-  Uncontrolled Fire Edge
-  Completed Dozer Line
-  Road as Completed Line
-  Planned Fire Line
-  Proposed Dozer Line
-  Fire Area

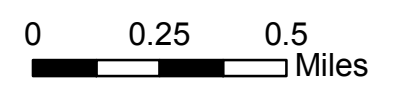


Rice Ridge Fire

MT-LNF-001464
 OPS DIV Map
 August 16, 2017
 11,857 Acres (MMA Flight 8/15/17 @ 1810)
 DIV M - North



- Structures
- Drop Point
- Water Source
- Uncontrolled Fire Edge
- Fire Area



Rice Ridge Fire

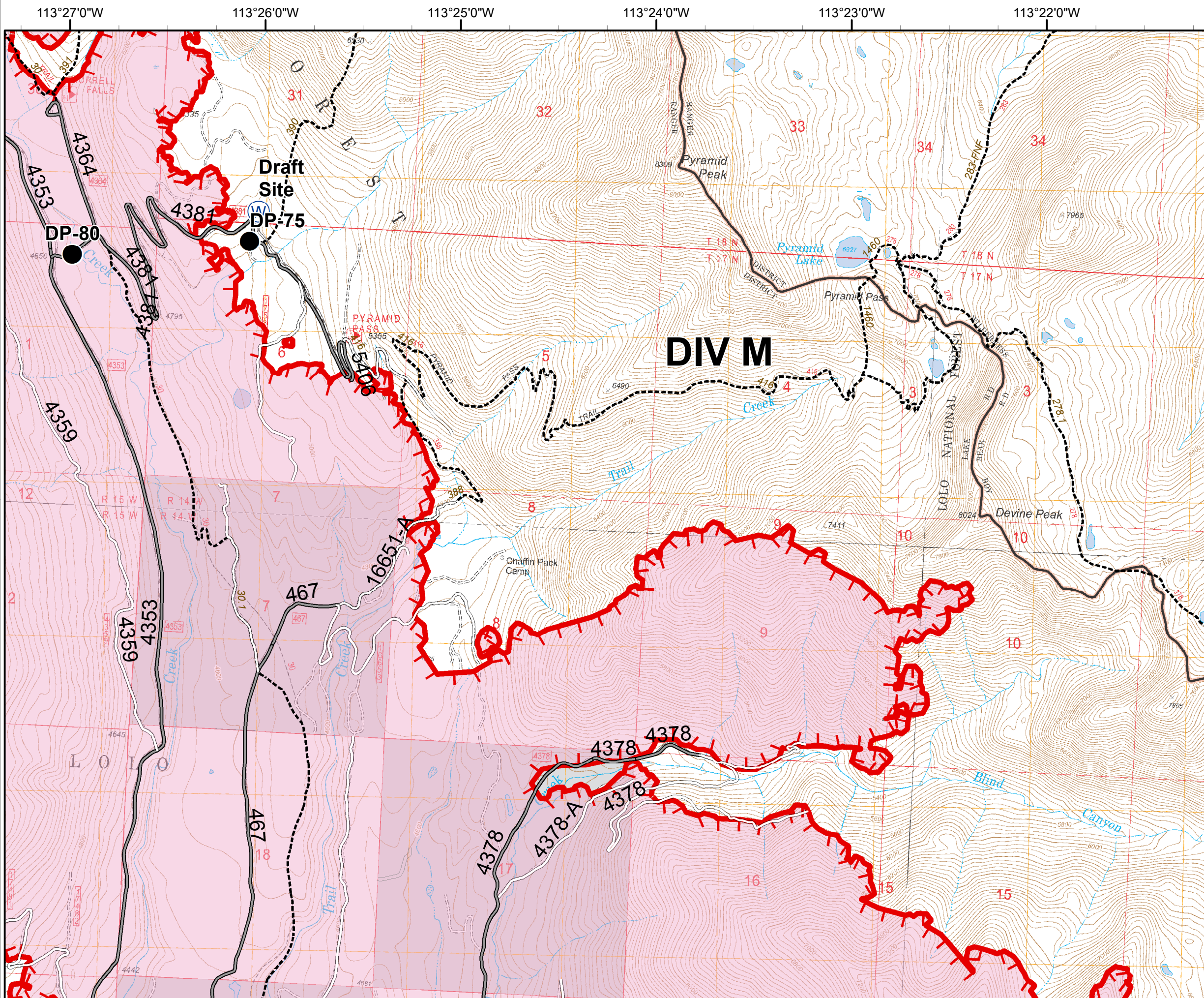
MT-LNF-001464

OPS DIV Map

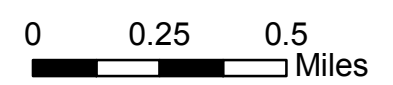
August 16, 2017

11,857 Acres (MMA Flight 8/15/17 @ 1810)

DIV M - South



- Structures
- Drop Point
- Ⓜ Water Source
- ▬ Uncontrolled Fire Edge
- Fire Area



Rice Ridge Fire

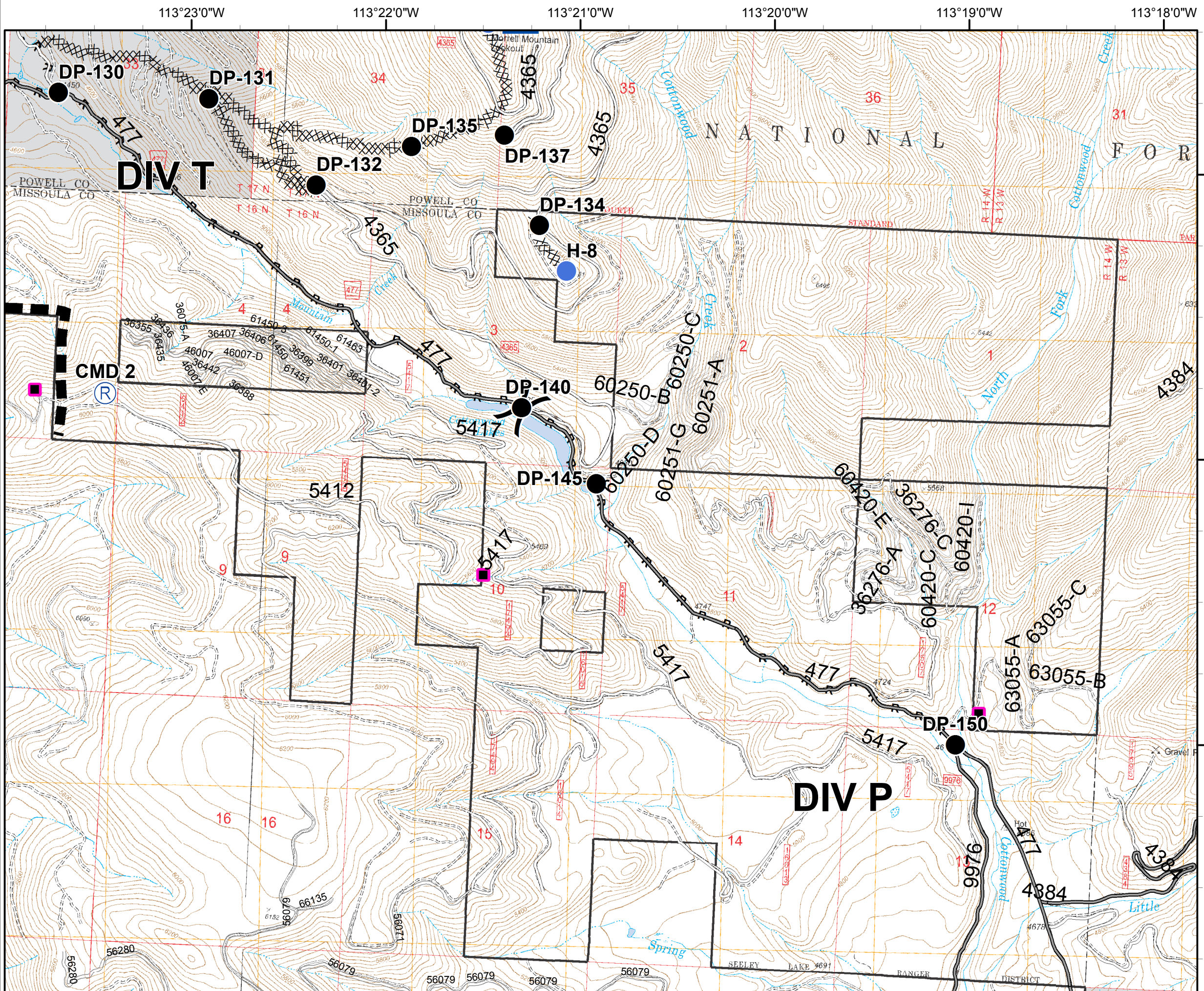
MT-LNF-001464

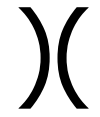






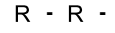


OPS DIV Map

August 16, 2017

11,857 Acres (MMA Flight 8/15/17 @ 1810)

DIV P



-  Division
 -  Structures
 -  Drop Point
 -  Helispot
 -  Mobile Weather Unit
 -  Repeater
 -  Completed Dozer Line
 -  R - R - Road as Completed Line
 -  Planned Fire Line
- 0 0.25 0.5 Miles
- 

Rice Ridge Fire

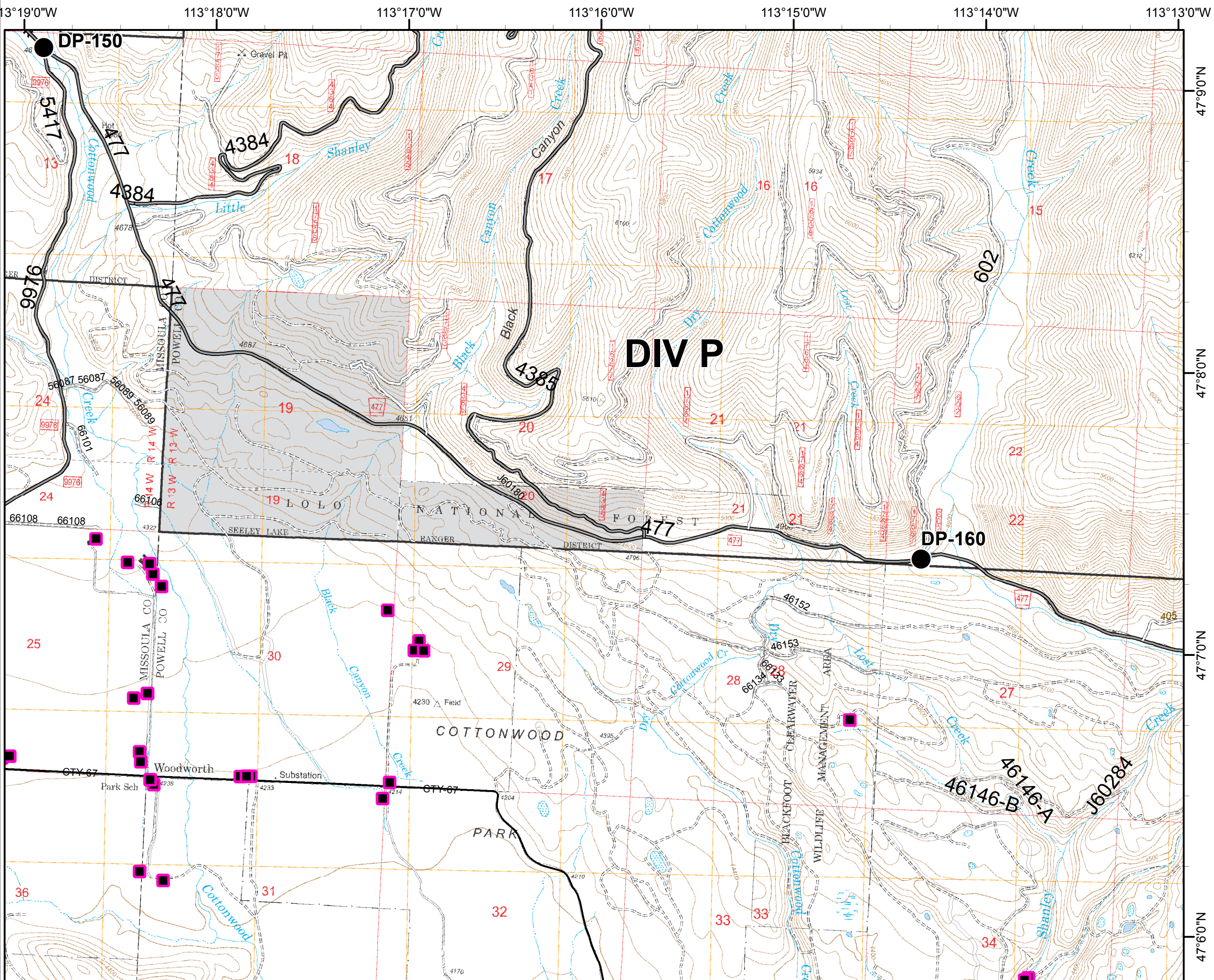
MT-LNF-001464

OPS DIV Map

August 16, 2017

11,857 Acres (MMA Flight 8/15/17 @ 1810)

DIV P



DIV P

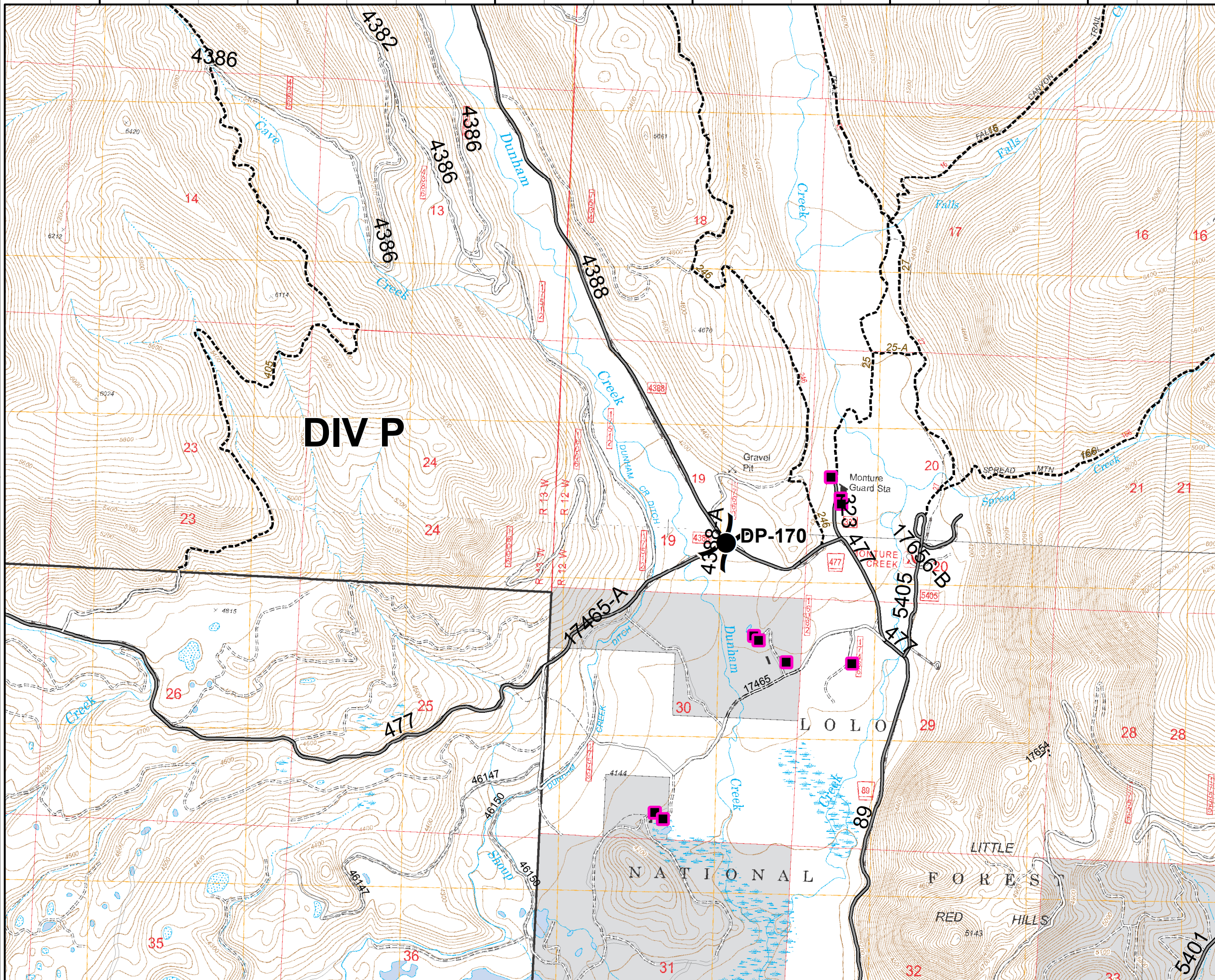
- Structures
 - Drop Point
 - R - R - Road as Completed Line
- 0 0.25 0.5 Miles



113°13'0"W 113°12'0"W 113°11'0"W 113°10'0"W 113°9'0"W 113°8'0"W

Rice Ridge Fire

MT-LNF-001464
OPS DIV Map
August 16, 2017
11,857 Acres (MMA Flight 8/15/17 @ 1810)
DIV P



47°9'0"N
47°8'0"N
47°7'0"N

DIV P

DP-170

() Division

■ Structures

● Drop Point

