

Rice Ridge Fire

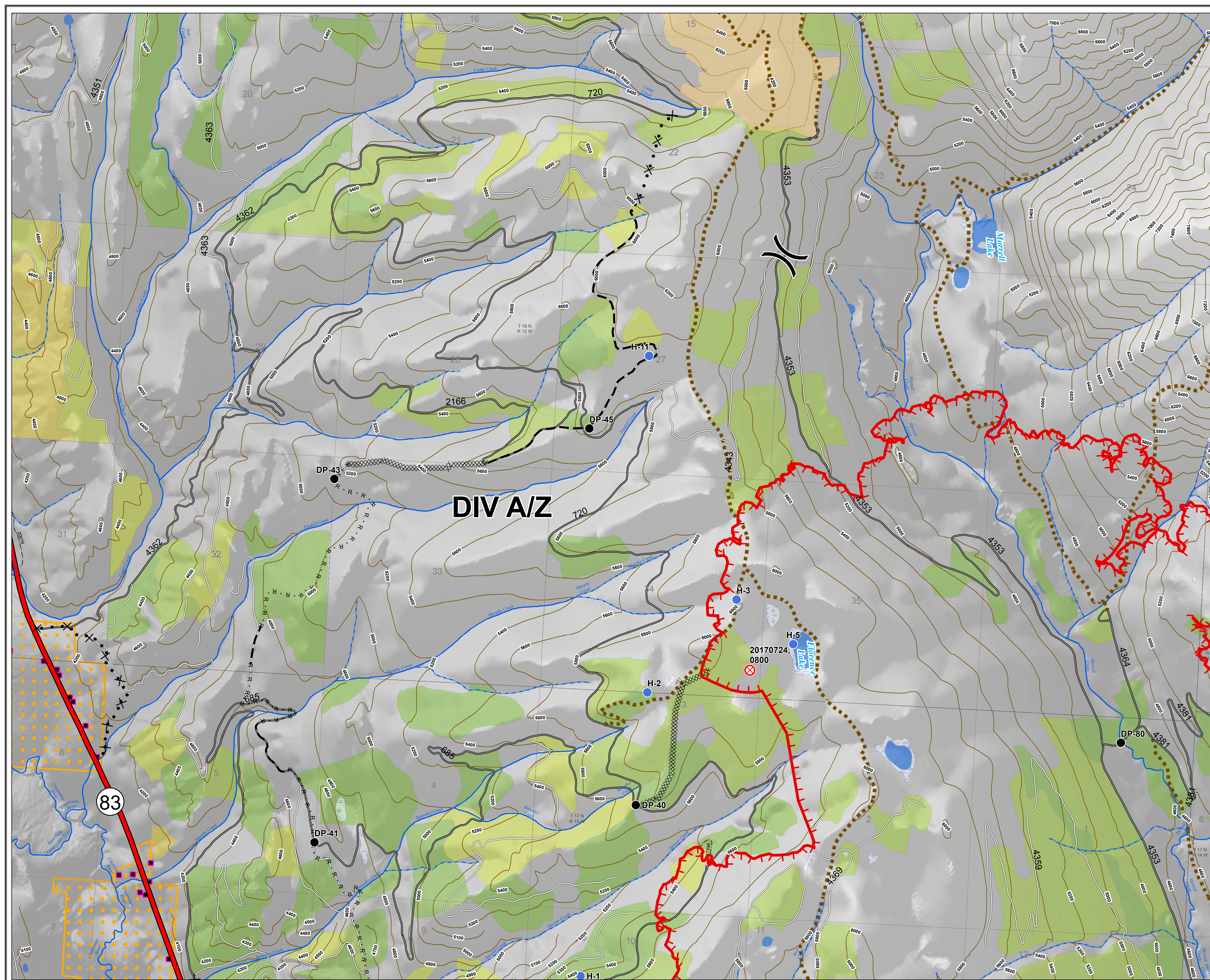
MT-LNF-001464

OPS Map

DIV A/Z - North

August 17, 2017

12,340 Acres (IR Flight 8/16/17 @ 2257)



Legend

- Drop Point
- ⊗ Fire Origin
- Helispot
- ⌘ Division
- ▬ Uncontrolled Fire Edge
- ▨ Completed Dozer Line
- R · R · R · R Road as Completed Line
- ▬ Planned Fire Line
- ⊗ · ● · ⊗ Proposed Dozer Line



0 0.25 0.5 1 Miles