

- Division
- Fire Origin (07/24/2017)
- Drop Point
- Helispot
- Incident Command Post
- Mobile Weather Unit
- Repeater
- Staging Area
- Water Source
- Uncontrolled Fire Edge
- Completed Dozer Line
- Completed Line
- R - Road as Completed Line
- Line Break Completed
- Planned Fire Line
- Proposed Dozer Line
- Fire Polygon
- Ranger Station
- Campground
- Lookout
- Point of Interest
- Trailhead
- Viewing Area
- Best Access
- Trail Data
- Research Forest
- Private
- State of Montana

IAP Map
RICE RIDGE FIRE
 MT-LNF-1464
August 17, 2017
 12,340 acres
 From IR Flight - 08/16 @ 22:57

EASTERN AREA
 Incident management team

1:57,918
 Map Created: 8/17/2017 6:06:35 AM

Structure Protection

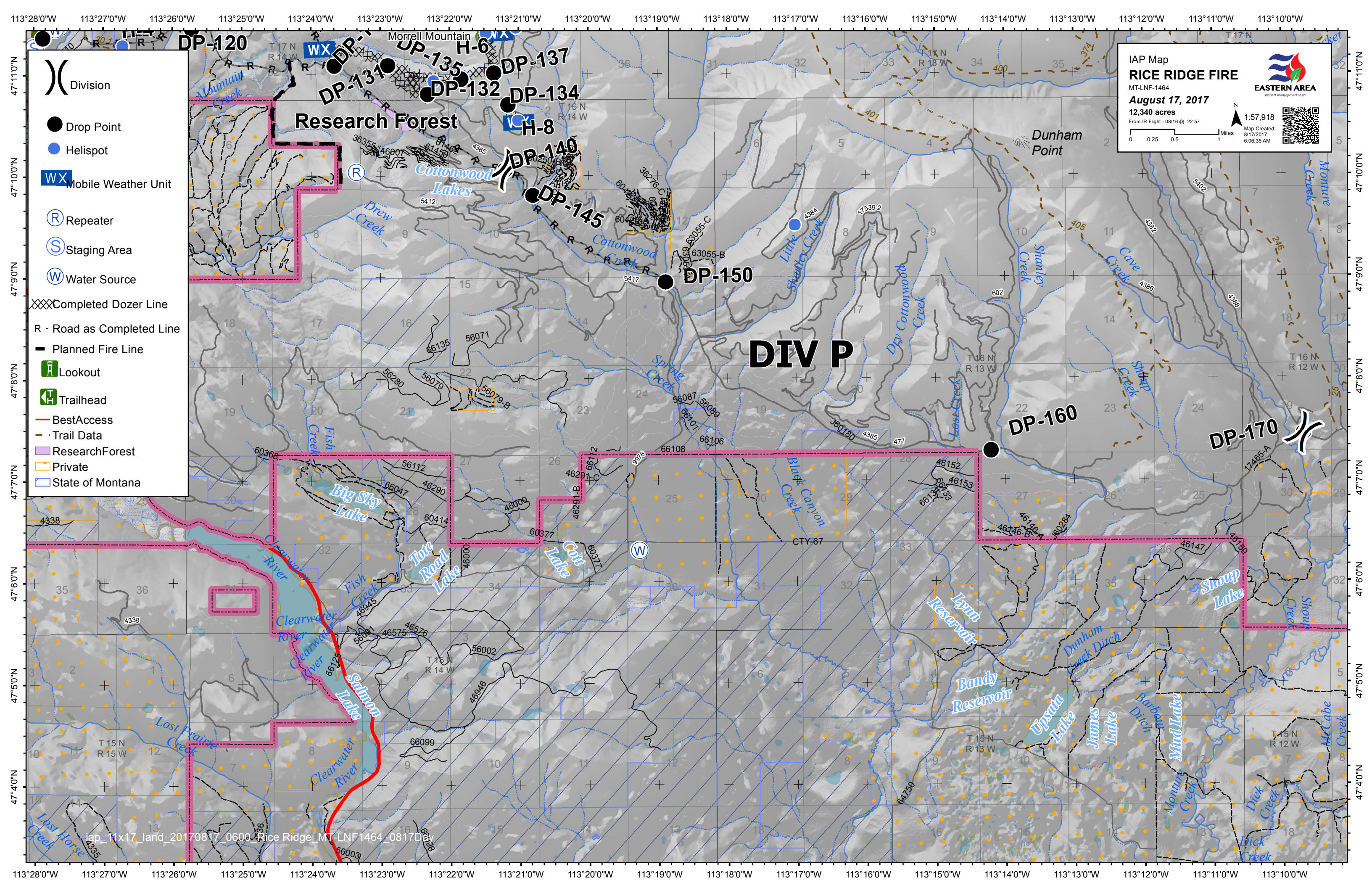
DIV AZ

DIV M


DIV W

DIV T

Research Forest




IAP Map
RICE RIDGE FIRE
MT-LNF-1464
August 17, 2017
12,340 acres
From IR Flight - 0816 @ 22:57



EASTERN AREA
Incident Management Team

1:57,918
Map Created: 8/17/2017 6:06:35 AM



0 0.25 0.5 1 Miles

- () Division
- Drop Point
- Helispot
- WX Mobile Weather Unit
- Ⓡ Repeater
- Ⓢ Staging Area
- Ⓦ Water Source
- XXXX Completed Dozer Line
- R - Road as Completed Line
- Planned Fire Line
- 🏠 Lookout
- 🏠 Trailhead
- Best Access
- Trail Data
- Research Forest
- Private
- State of Montana

DIV P