

# Fire History Map

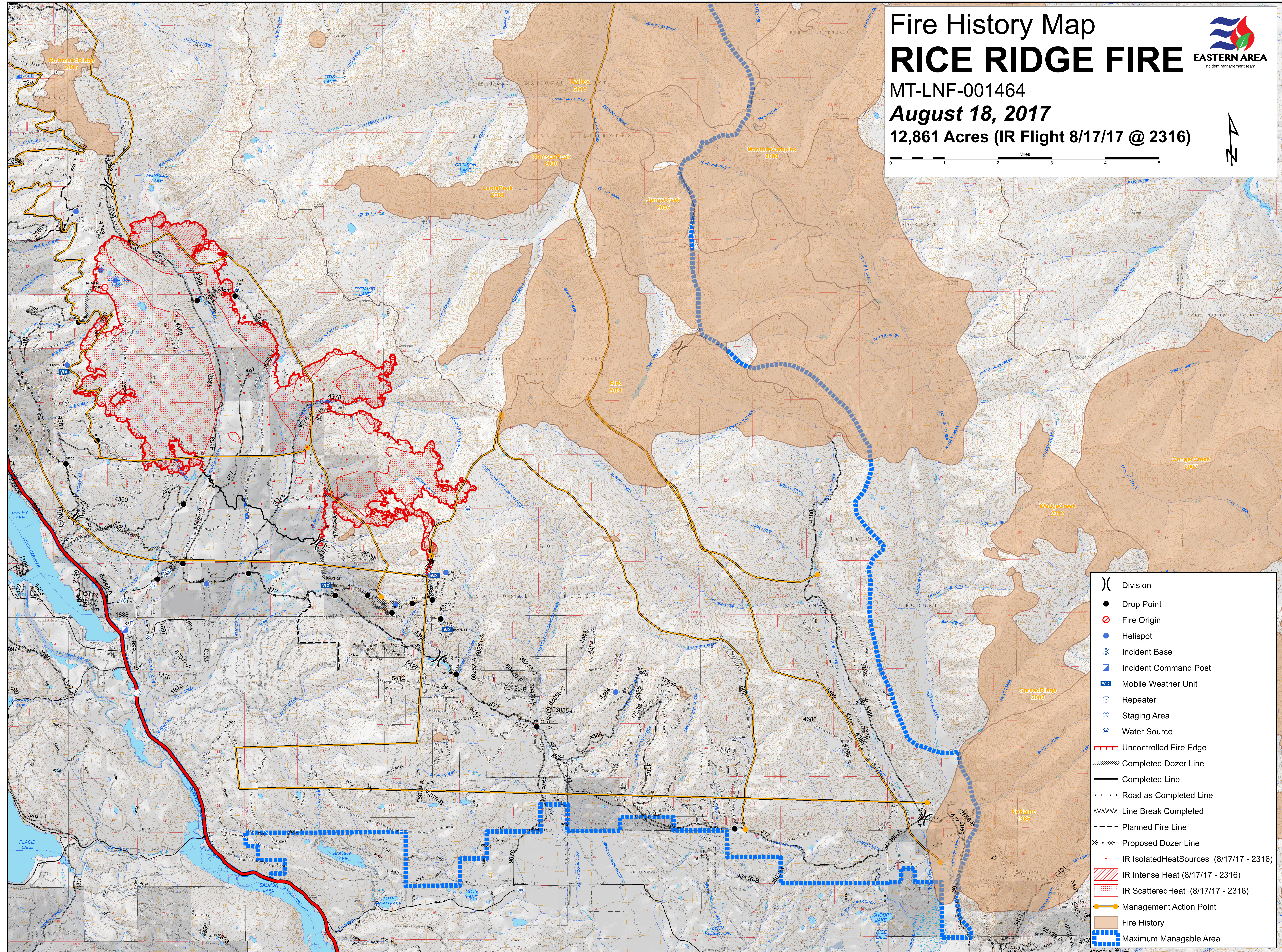
## RICE RIDGE FIRE



MT-LNF-001464

August 18, 2017

12,861 Acres (IR Flight 8/17/17 @ 2316)



- ( ) Division
- Drop Point
- ⊗ Fire Origin
- Helispot
- ⓑ Incident Base
- Ⓜ Incident Command Post
- WX Mobile Weather Unit
- Ⓡ Repeater
- Ⓢ Staging Area
- Ⓦ Water Source
- Uncontrolled Fire Edge
- Completed Dozer Line
- Completed Line
- Road as Completed Line
- Line Break Completed
- Planned Fire Line
- × · × Proposed Dozer Line
- IR IsolatedHeatSources (8/17/17 - 2316)
- IR Intense Heat (8/17/17 - 2316)
- IR ScatteredHeat (8/17/17 - 2316)
- Management Action Point
- Fire History
- Maximum Managable Area