

# Rice Ridge Fire

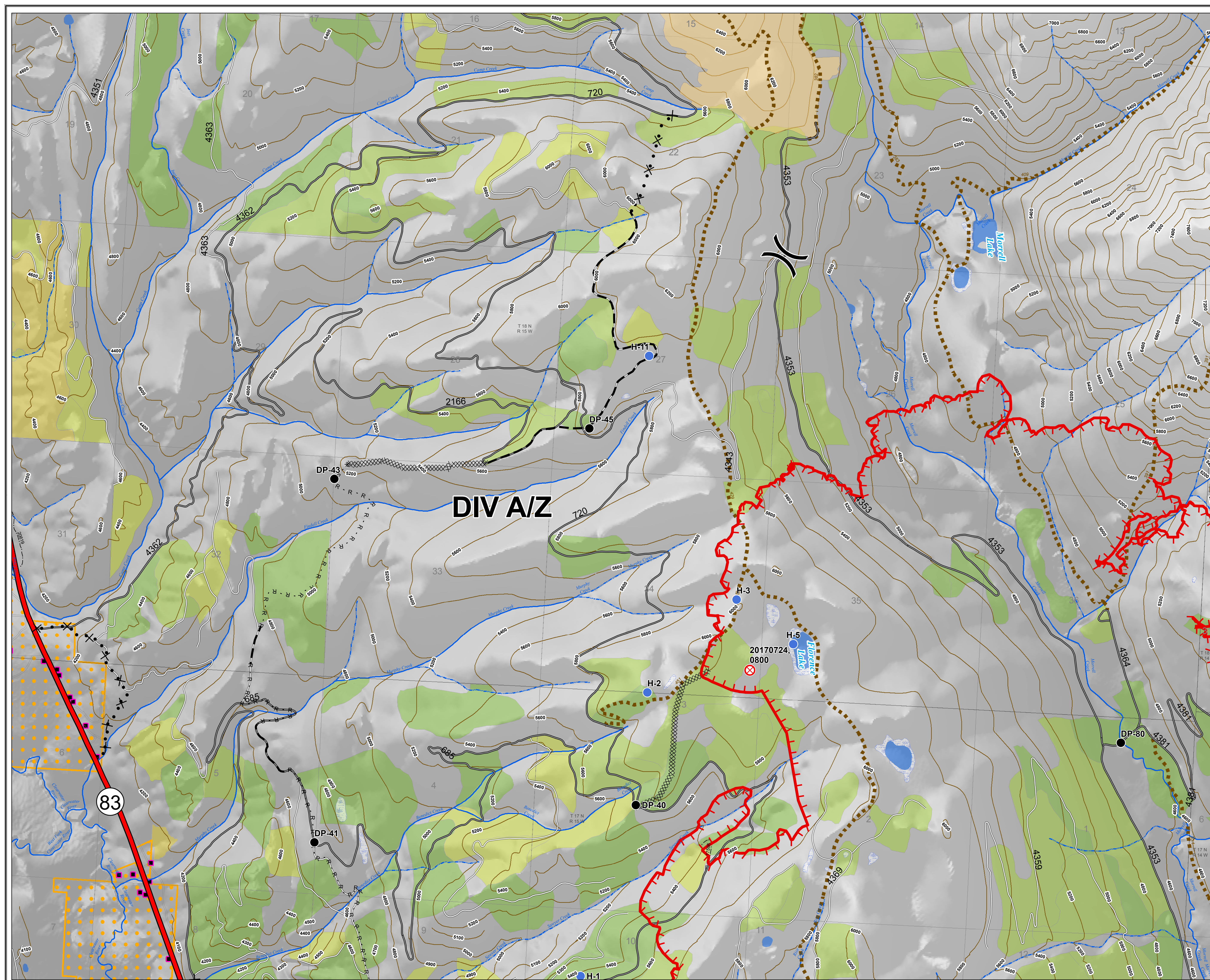
MT-LNF-001464

OPS Map

DIV A/Z - North

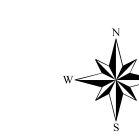
August 18, 2017

12,861 Acres (IR Flight 8/17/17 @ 2316)



## Legend

- Drop Point
- ⊗ Fire Origin
- Helispot
- ⌘ Division
- ▬ Uncontrolled Fire Edge
- ▨ Completed Dozer Line
- R · R · R · R Road as Completed Line
- ▬ Planned Fire Line
- ⊗ · ● · ⊗ Proposed Dozer Line



0 0.25 0.5 1 Miles