



- Division
- Fire Origin (07/24/2017)
- Drop Point
- Helispot
- Incident Command Post
- Mobile Weather Unit
- Repeater
- Staging Area
- Water Source
- Uncontrolled Fire Edge
- Completed Dozer Line
- Completed Line
- Road as Completed Line
- Line Break Completed
- Planned Fire Line
- Proposed Dozer Line
- Fire Polygon
- Ranger Station
- Campground
- Lookout
- Point of Interest
- Trailhead
- Viewing Area
- Best Access
- Trail Data
- Research Forest
- Private
- State of Montana

IAP Map  
**RICE RIDGE FIRE**  
 MT-LNF-1464  
 August 18, 2017  
 12,861 acres  
 From IR Flight - 08/17 @ 23:16



EASTERN AREA  
 Incident Management Team

1:57,918  
 Map Created: 8/18/2017 5:32:14 AM



0 0.25 0.5 1 Miles

Structure Protection

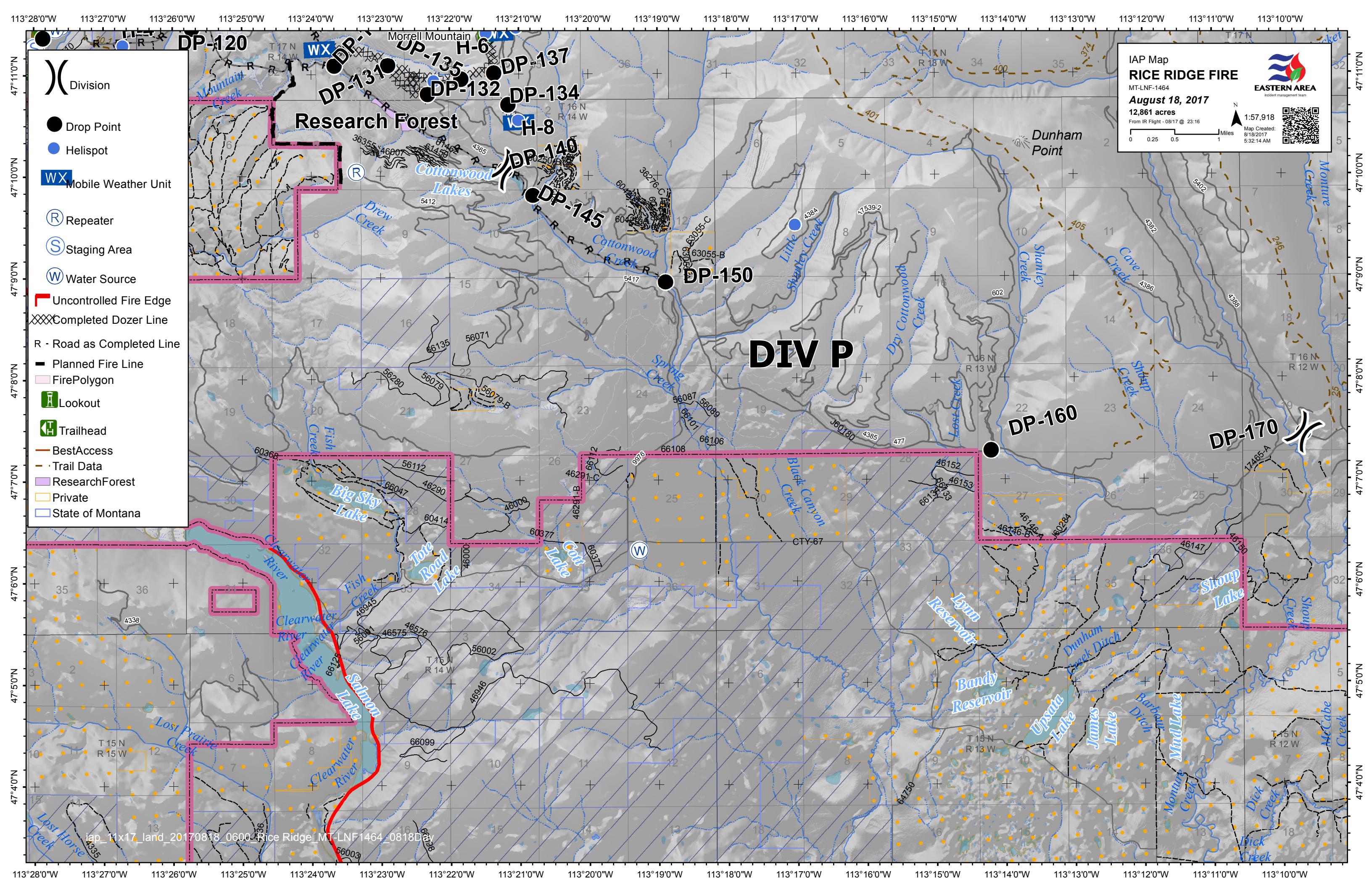
DIV AZ

DIV M

DIV W

DIV T

Research Forest



IAP Map  
**RICE RIDGE FIRE**  
MT-LNF-1464  
August 18, 2017  
12,861 acres  
From IR Flight - 0817 @ 23:16

1:57,918  
Map Created: 8/18/2017 5:32:14 AM

- ( ) Division
- Drop Point
- Helispot
- WX Mobile Weather Unit
- Ⓡ Repeater
- Ⓢ Staging Area
- Ⓜ Water Source
- Uncontrolled Fire Edge
- XXXX Completed Dozer Line
- R - Road as Completed Line
- Planned Fire Line
- FirePolygon
- Lookout
- Trailhead
- BestAccess
- Trail Data
- ResearchForest
- Private
- State of Montana

**DIV P**