

# Rice Ridge Fire

MT-LNF-001464

OPS Map

DIV W

August 19, 2017

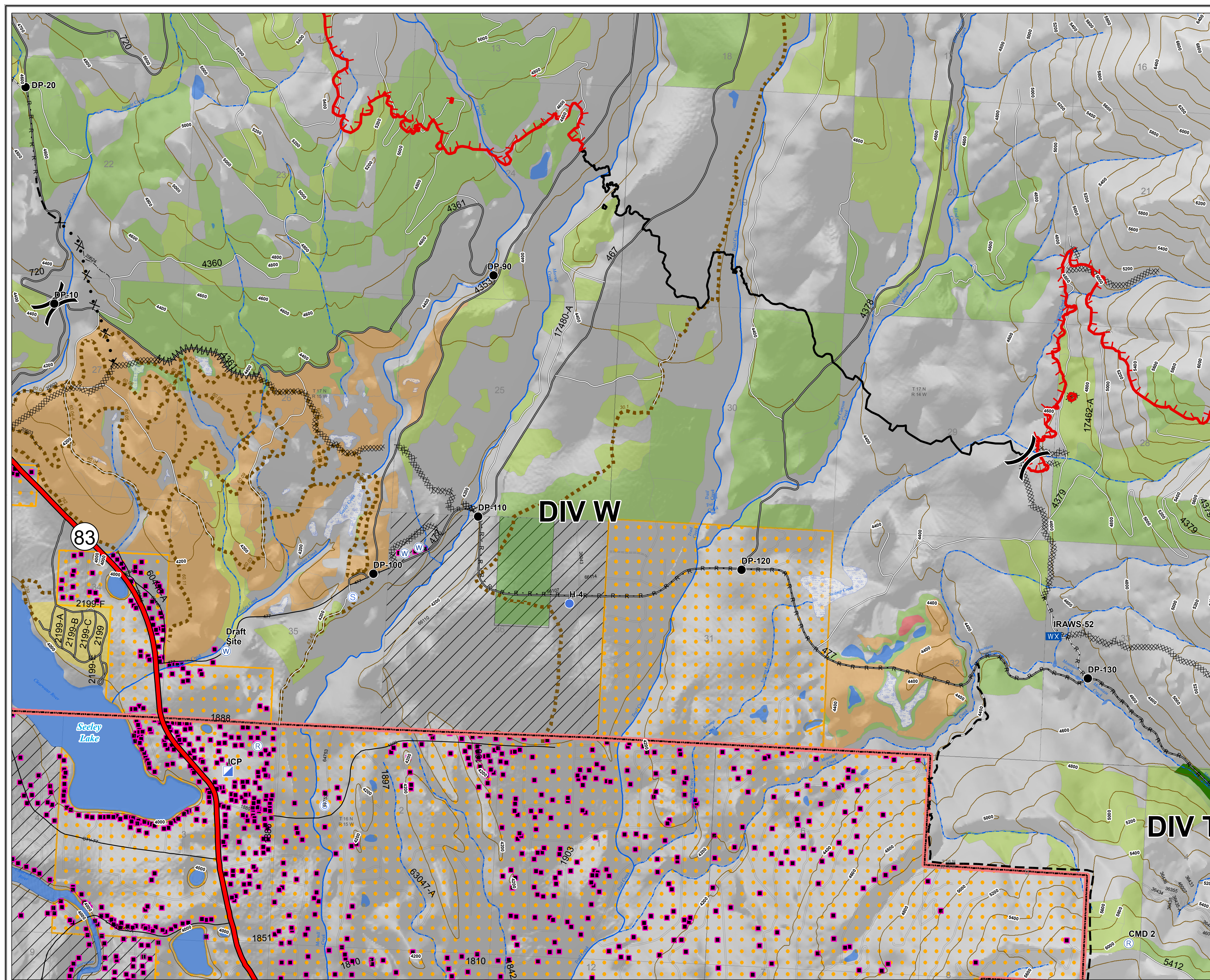
14,834 Acres (IR Flight 8/18/17 @ 2256)

## Legend

- Drop Point
- Helispot
- ▣ Incident Command Post
- WX Mobile Weather Unit
- Ⓡ Repeater
- Ⓢ Staging Area
- Ⓜ Water Source
- ) Division
- └─┘ Uncontrolled Fire Edge
- ▩ Completed Dozer Line
- Completed Line
- R · R · R · R Road as Completed Line
- ▩▩▩▩ Line Break Completed
- - - Planned Fire Line
- ⊗ · ⊗ Proposed Dozer Line



0 0.25 0.5 1 Miles



DIV W

DIV T

ICP

CMD 2