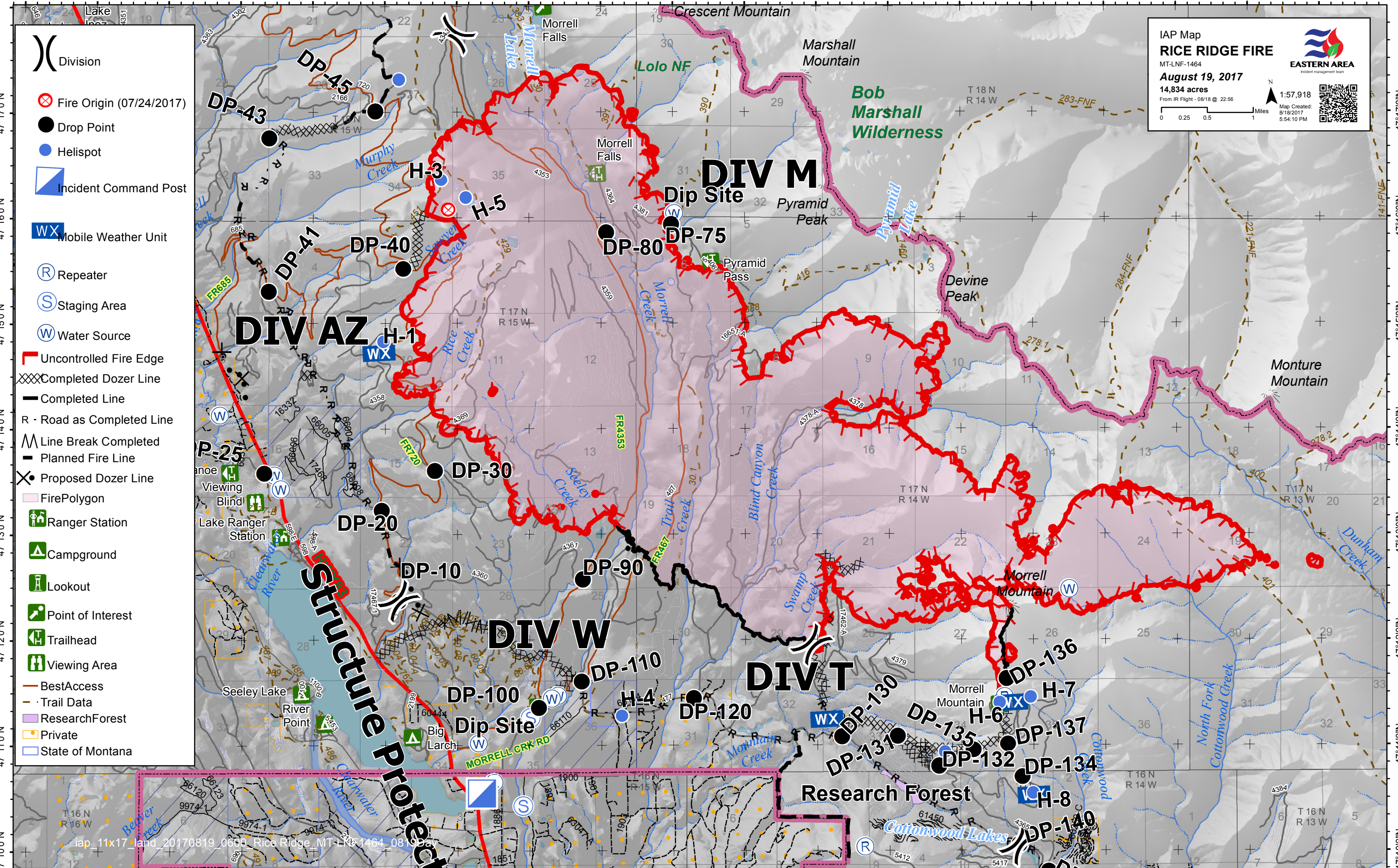


113°35'0"W 113°34'0"W 113°33'0"W 113°32'0"W 113°31'0"W 113°30'0"W 113°29'0"W 113°28'0"W 113°27'0"W 113°26'0"W 113°25'0"W 113°24'0"W 113°23'0"W 113°22'0"W 113°21'0"W 113°20'0"W 113°19'0"W 113°18'0"W 113°17'0"W



- (X) Division
- ⊗ Fire Origin (07/24/2017)
- Drop Point
- Helispot
- ▢ Incident Command Post
- WX Mobile Weather Unit
- Ⓡ Repeater
- Ⓢ Staging Area
- Ⓜ Water Source

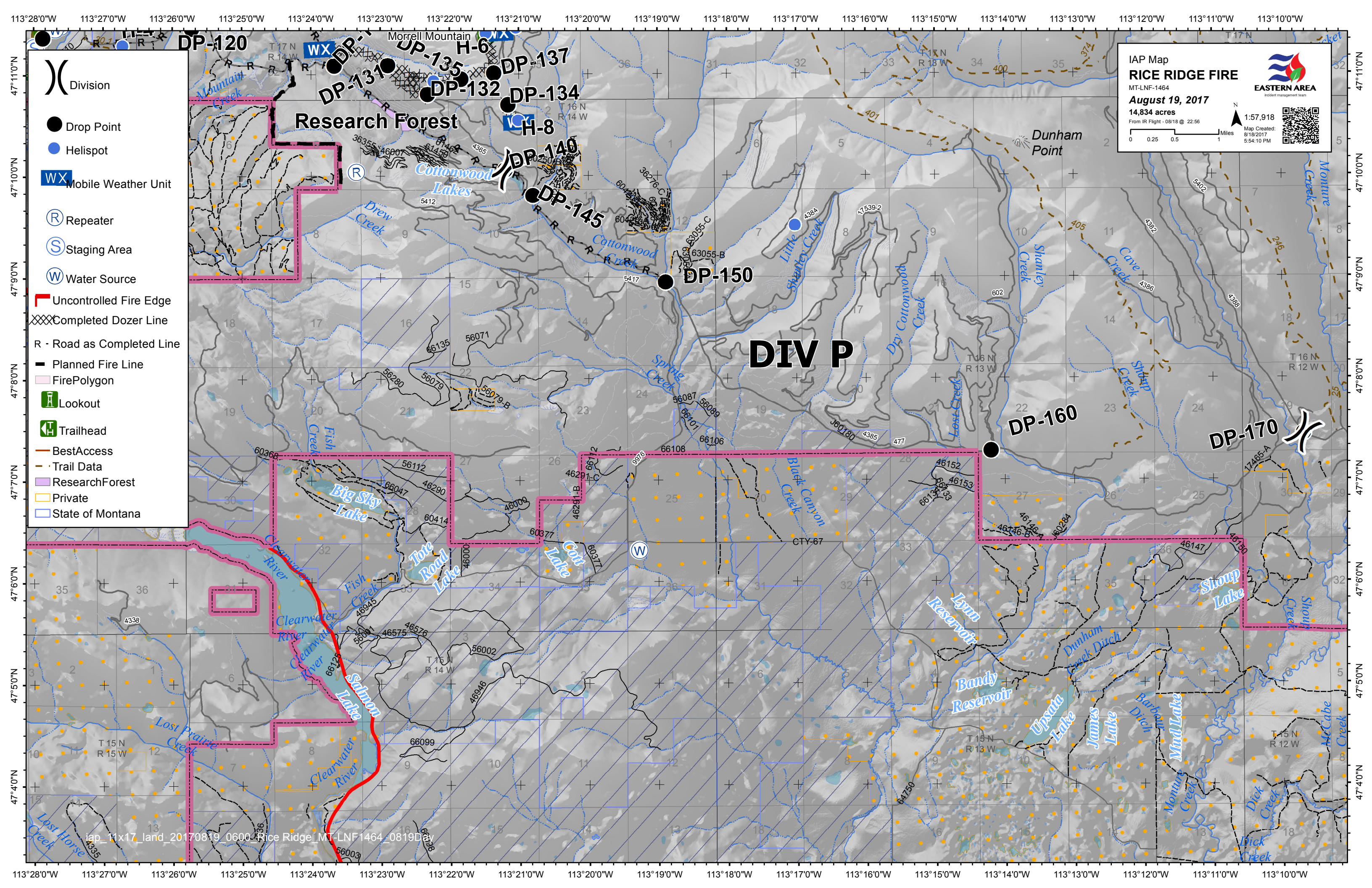
- Uncontrolled Fire Edge
- XXXX Completed Dozer Line
- Completed Line
- R - Road as Completed Line
- Line Break Completed
- Planned Fire Line
- ✕ Proposed Dozer Line
- FirePolygon
- Ranger Station
- Campground
- Lookout
- Point of Interest
- Trailhead
- Viewing Area
- BestAccess
- Trail Data
- ResearchForest
- Private
- State of Montana

IAP Map
RICE RIDGE FIRE
 MT-LNF-1464
August 19, 2017
 14,834 acres
 From IR Flight - 0818 @ 22:56

EASTERN AREA
 Incident management team

1:57,918
 Map Created: 8/19/2017 5:54:10 PM

113°35'0"W 113°34'0"W 113°33'0"W 113°32'0"W 113°31'0"W 113°30'0"W 113°29'0"W 113°28'0"W 113°27'0"W 113°26'0"W 113°25'0"W 113°24'0"W 113°23'0"W 113°22'0"W 113°21'0"W 113°20'0"W 113°19'0"W 113°18'0"W 113°17'0"W



- () Division
- Drop Point
- Helispot
- WX Mobile Weather Unit
- Ⓡ Repeater
- Ⓢ Staging Area
- Ⓜ Water Source
- Uncontrolled Fire Edge
- XXXX Completed Dozer Line
- R - Road as Completed Line
- Planned Fire Line
- Fire Polygon
- Lookout
- Trailhead
- Best Access
- Trail Data
- Research Forest
- Private
- State of Montana

IAP Map
RICE RIDGE FIRE
MT-LNF-1464
August 19, 2017
14,834 acres
From IR Flight - 0818 @ 22:56

1:57,918
Map Created: 8/19/2017 5:54:10 PM

DIV P