

113°26'0"W 113°25'0"W 113°24'0"W 113°23'0"W 113°22'0"W 113°21'0"W

Rice Ridge Fire

MT-LNF-001464

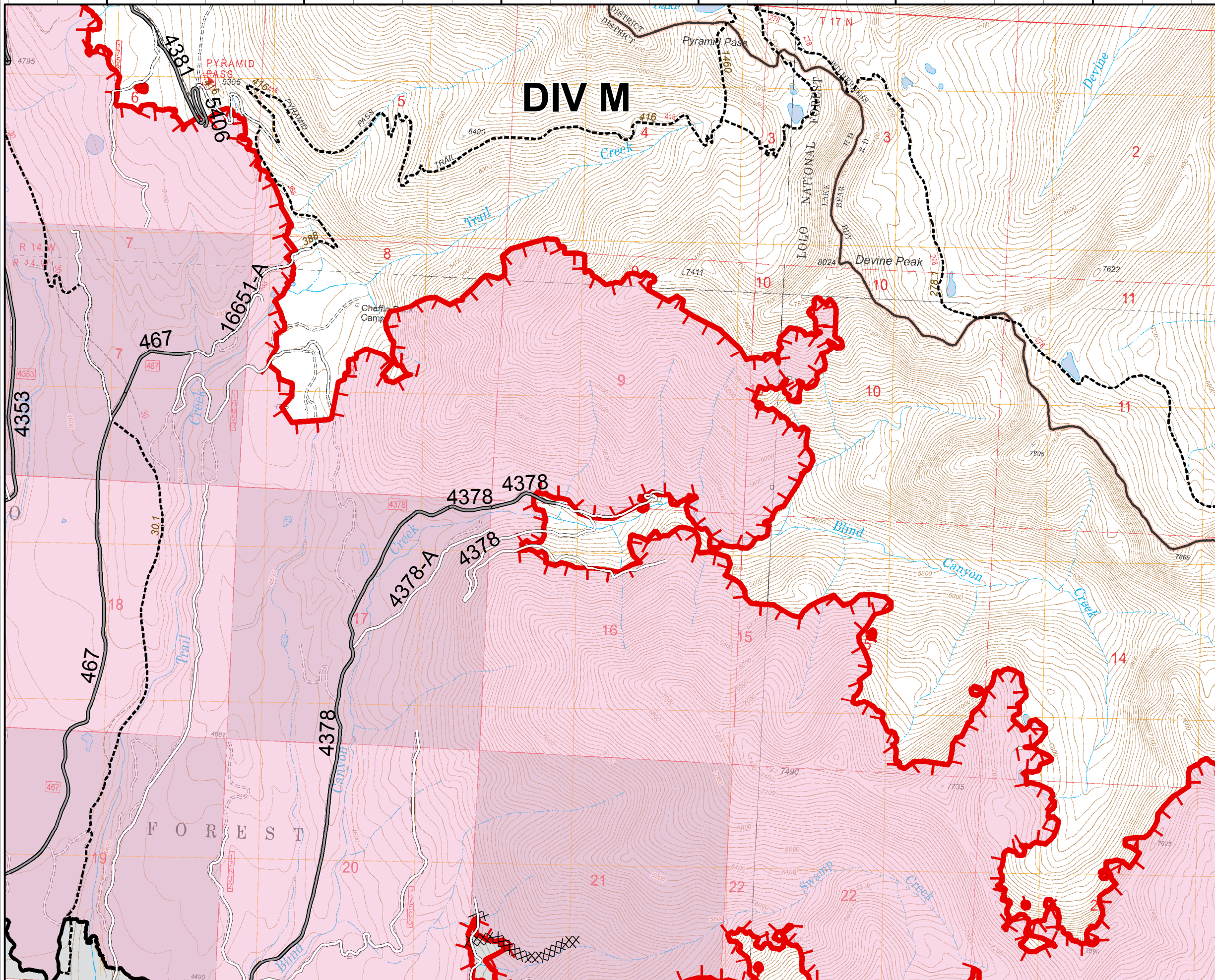
OPS DIV Map

August 20, 2017

15,357 Acres (IR Flight 8/19/17 @ 2051)

DIV B - South

47°16'0"N
47°15'0"N
47°14'0"N
47°13'0"N



- Structures
- ┌┐┌ Uncontrolled Fire Edge
- XXXXXX Completed Dozer Line
- Completed Line
- Fire Area

