

# Rice Ridge Fire

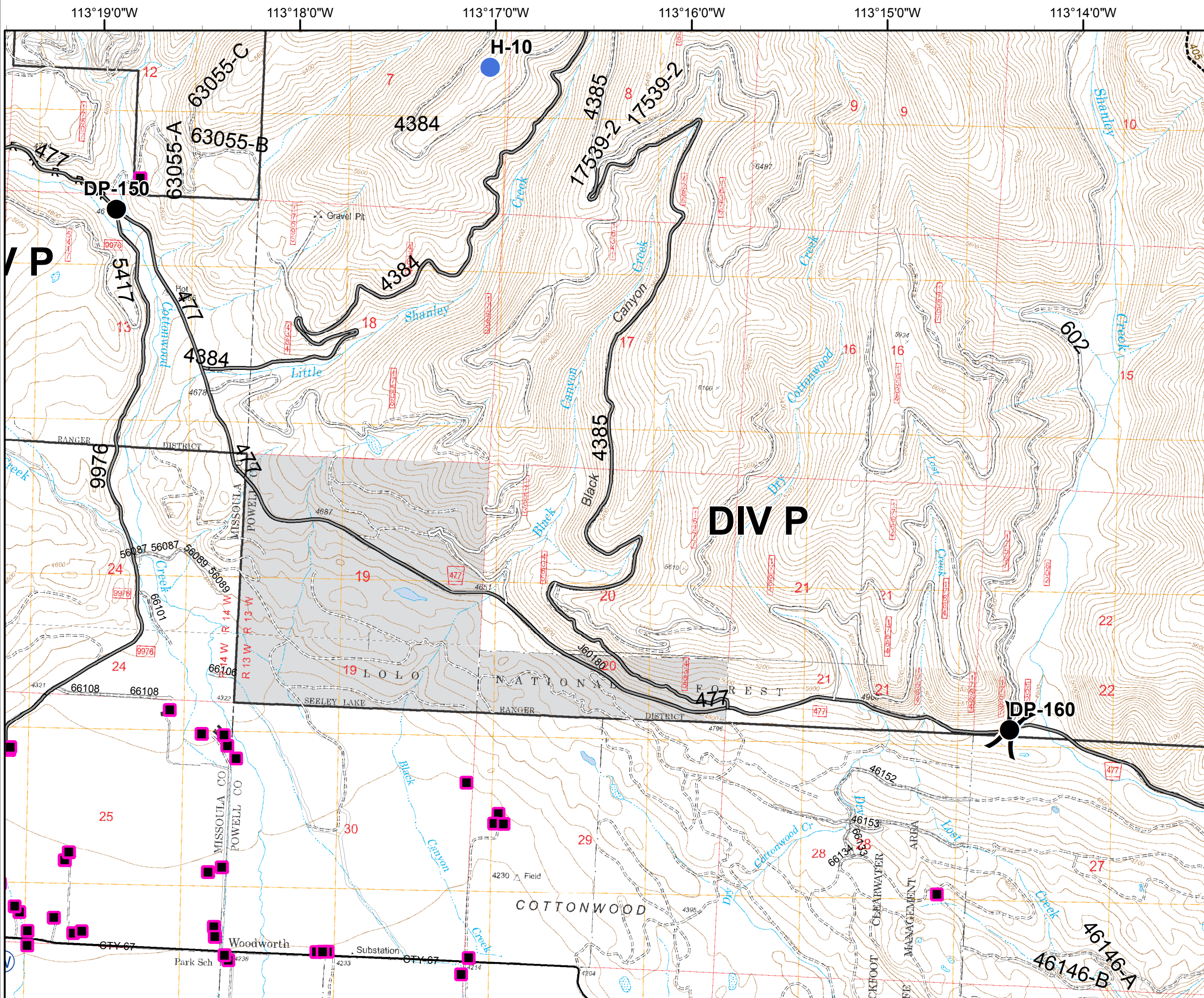
MT-LNF-001464

OPS DIV Map

August 20, 2017

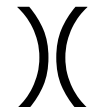




15,357 Acres (IR Flight 8/19/17 @ 2051)

**DIV P - East**



47°9'0"N  
47°8'0"N  
47°7'0"N

113°19'0"W 113°18'0"W 113°17'0"W 113°16'0"W 113°15'0"W 113°14'0"W

-  Division
-  Structures
-  Drop Point
-  Helispot
-  Water Source

R - R - Road as Completed Line

