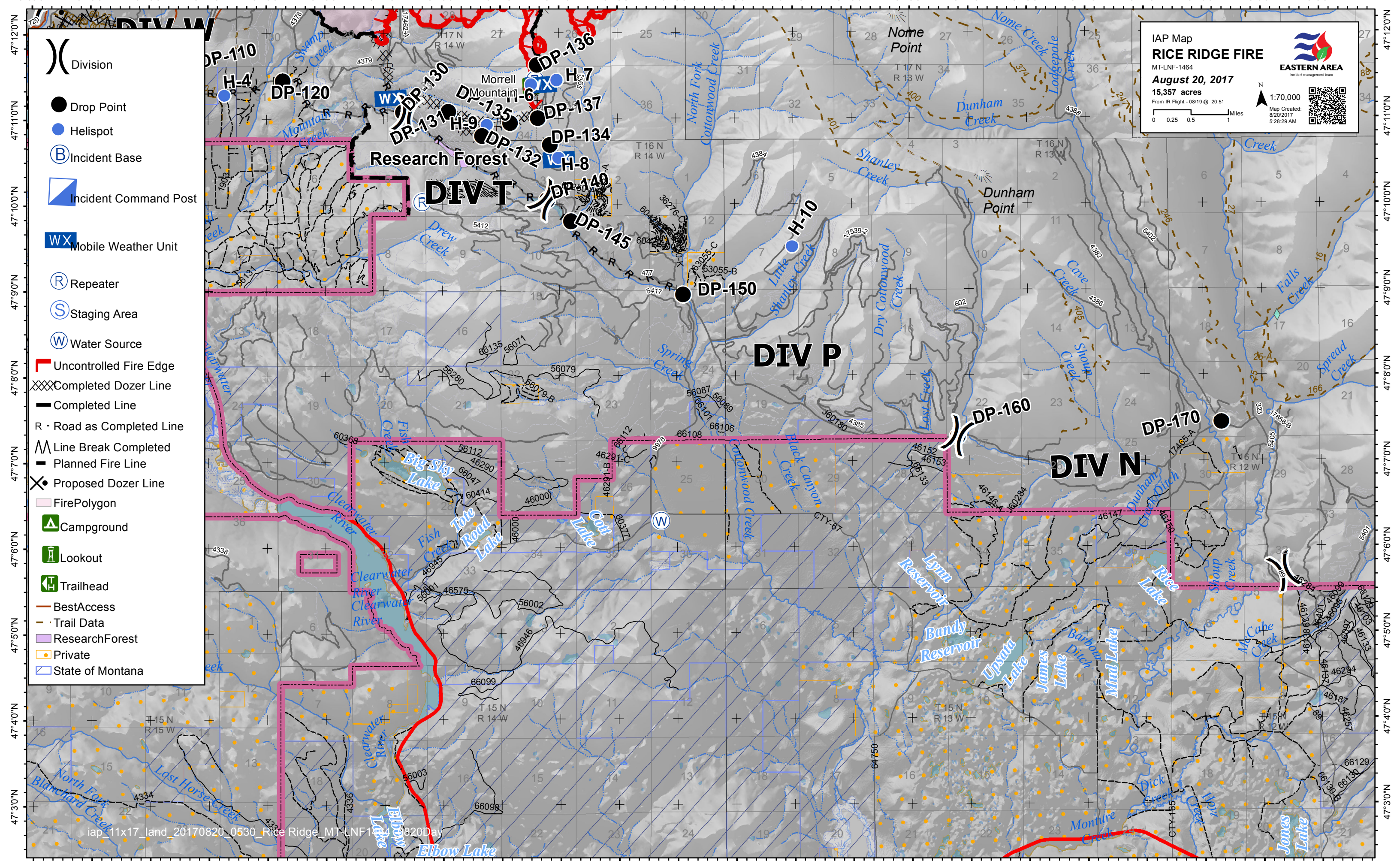


- () Division
- ⊗ Fire Origin (07/24/2017)
- Drop Point
- Helispot
- (B) Incident Base
- ▢ Incident Command Post
- WX Mobile Weather Unit
- (R) Repeater
- (S) Staging Area
- (W) Water Source
- Uncontrolled Fire Edge
- XXX Completed Dozer Line
- Completed Line
- R - Road as Completed Line
- Λ Line Break Completed
- Planned Fire Line
- ✕ Proposed Dozer Line
- FirePolygon
- Ranger Station
- Campground
- Lookout
- Point of Interest
- Trailhead
- Viewing Area
- Best Access
- Trail Data
- Morrell Complex
- Research Forest
- Private
- State of Montana


IAP Map
RICE RIDGE FIRE
MT-LNF-1464
August 20, 2017
15,357 acres
From IR Flight - 08/19 @ 20:51

1:70,000
Map Created: 8/20/2017 5:28:29 AM



- Division
- Drop Point
- Helispot
- Incident Base
- Incident Command Post
- Mobile Weather Unit
- Repeater
- Staging Area
- Water Source
- Uncontrolled Fire Edge
- Completed Dozer Line
- Completed Line
- R - Road as Completed Line
- Line Break Completed
- Planned Fire Line
- Proposed Dozer Line
- Fire Polygon
- Campground
- Lookout
- Trailhead
- Best Access
- Trail Data
- Research Forest
- Private
- State of Montana

IAP Map
RICE RIDGE FIRE
 MT-LNF-1464
August 20, 2017
 15,357 acres
 From IR Flight - 0819 @ 20:51



EASTERN AREA
 Incident management team

Scale: 1:70,000
 Map Created: 8/20/2017 5:28:29 AM

