

Rice Ridge Fire

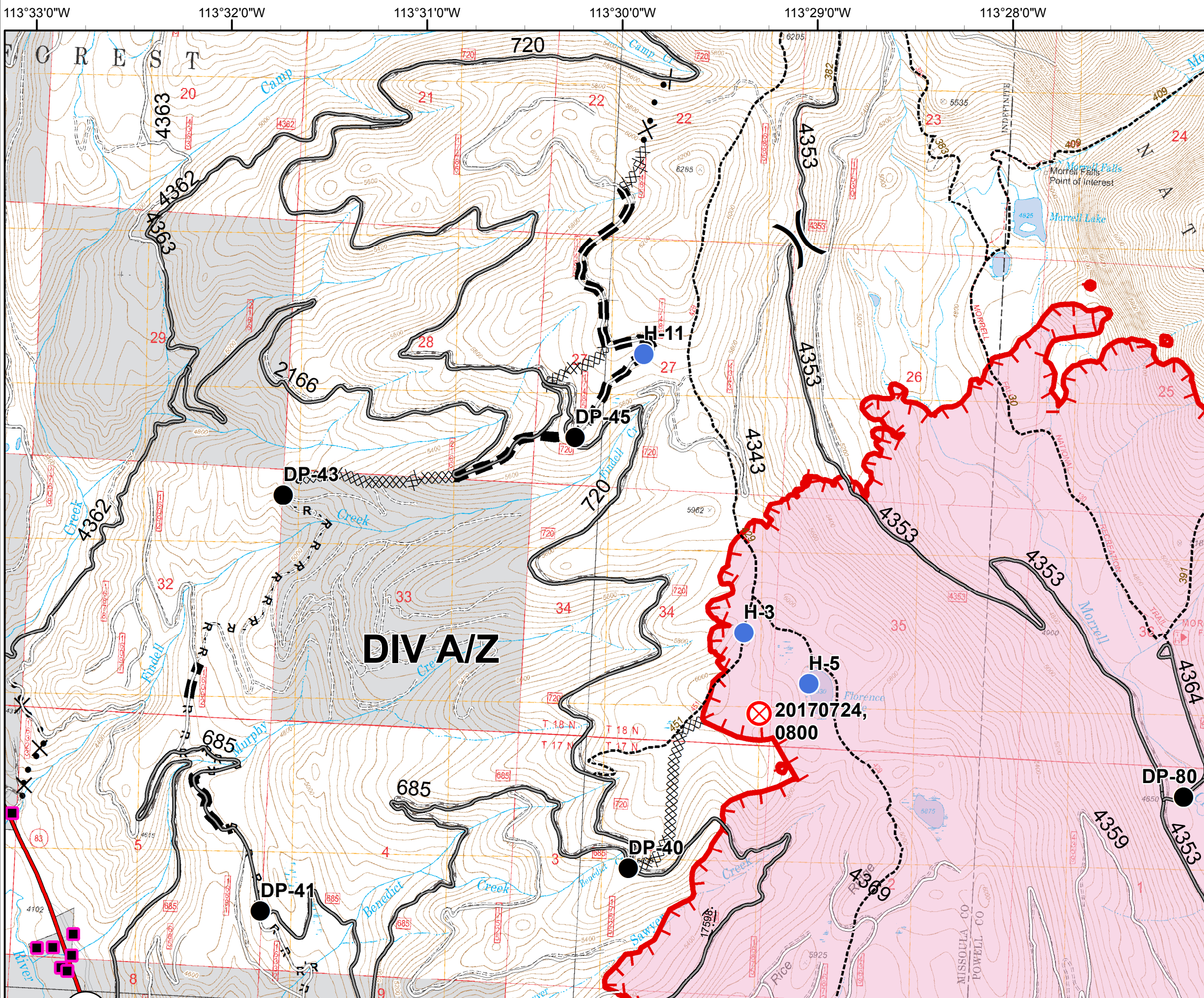
MT-LNF-001464

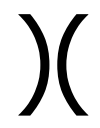






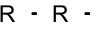



OPS DIV Map

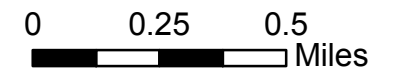
August 20, 2017

15,357 Acres (IR Flight 8/19/17 @ 2051)

DIV A/Z - North



-  Division
-  Structures
-  Drop Point
-  Fire Origin
-  Helispot
-  Uncontrolled Fire Edge
-  Completed Dozer Line
-  Road as Completed Line
-  Planned Fire Line
-  Proposed Dozer Line
-  Fire Area



Rice Ridge Fire

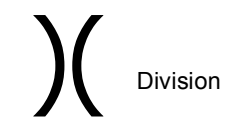
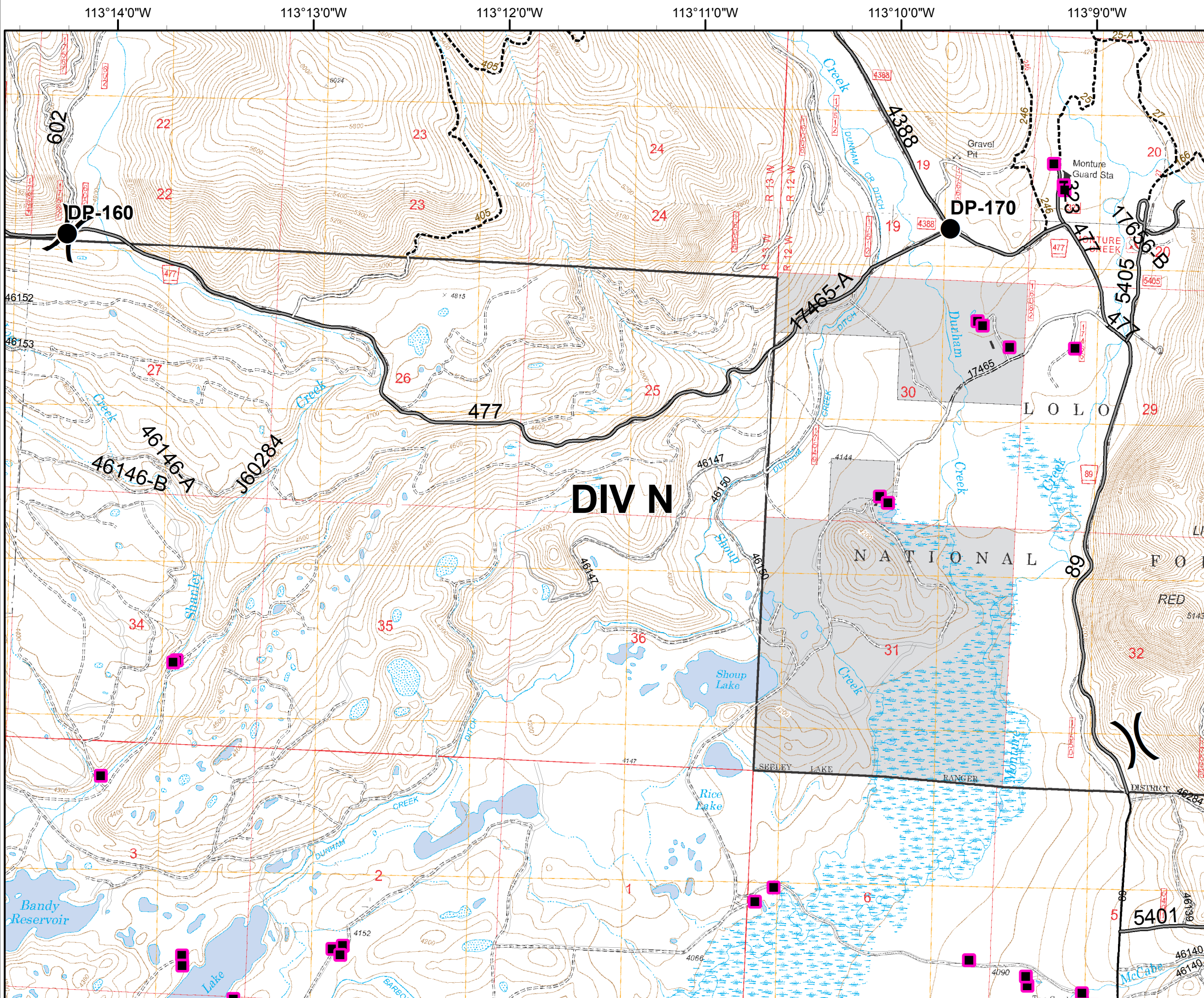
MT-LNF-001464

OPS DIV Map

August 20, 2017

15,357 Acres (IR Flight 8/19/17 @ 2051)

DIV N



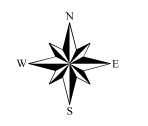
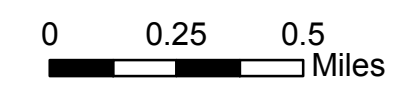
Division



Structures



Drop Point



Rice Ridge Fire

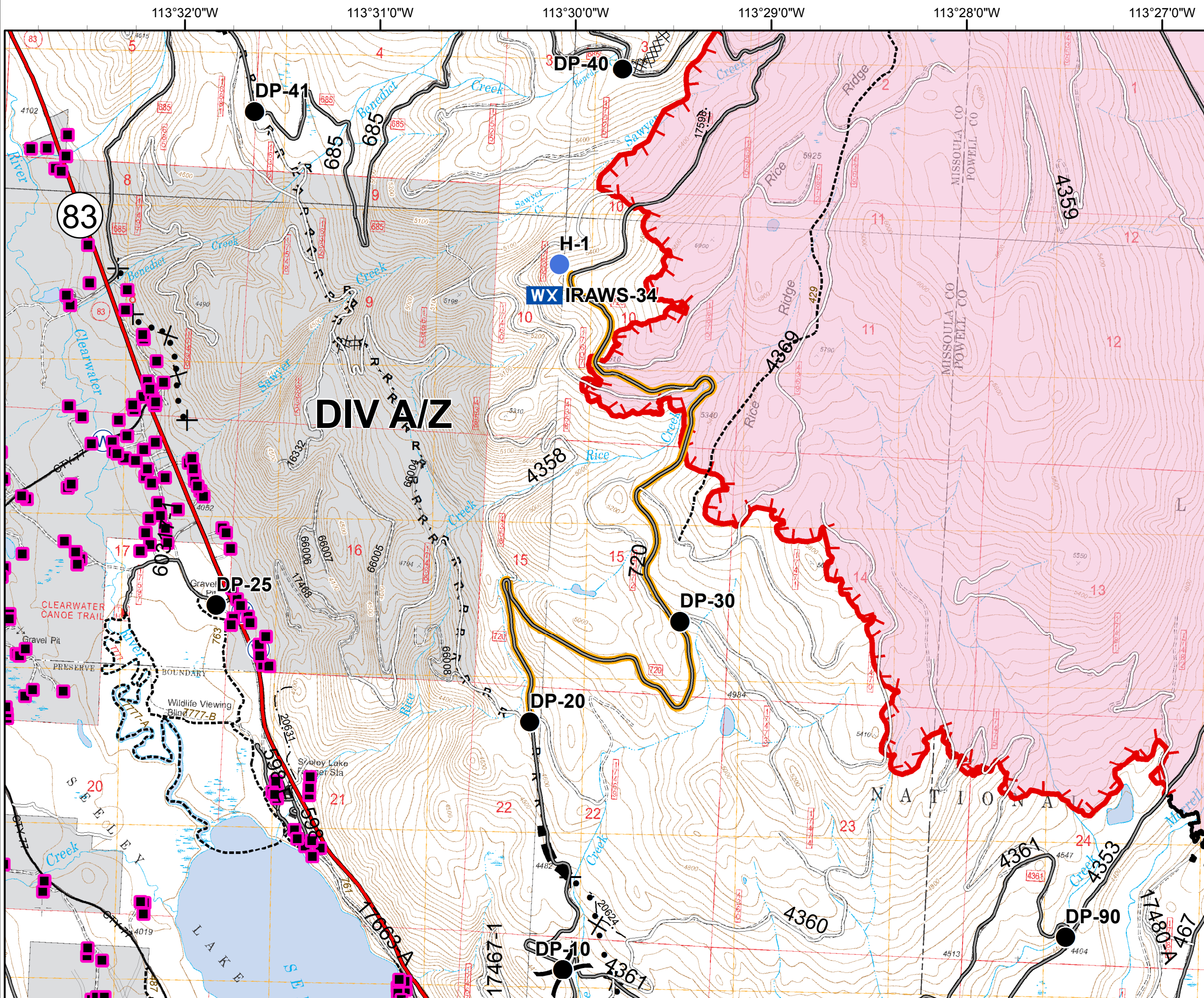
MT-LNF-001464

OPS DIV Map

August 20, 2017

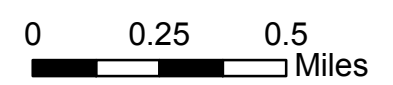
15,357 Acres (IR Flight 8/19/17 @ 2051)

DIV A/Z - South



47°15'0"N
47°14'0"N
47°13'0"N

- () Division
- Structures
- Drop Point
- Helispot
- WX Mobile Weather Unit
- W Water Source
- Road Closure (Need Div Sup Approval)
- Uncontrolled Fire Edge
- XXXXX Completed Dozer Line
- Completed Line
- R - R - Road as Completed Line
- Planned Fire Line
- ⊗ Proposed Dozer Line
- Fire Area



Rice Ridge Fire

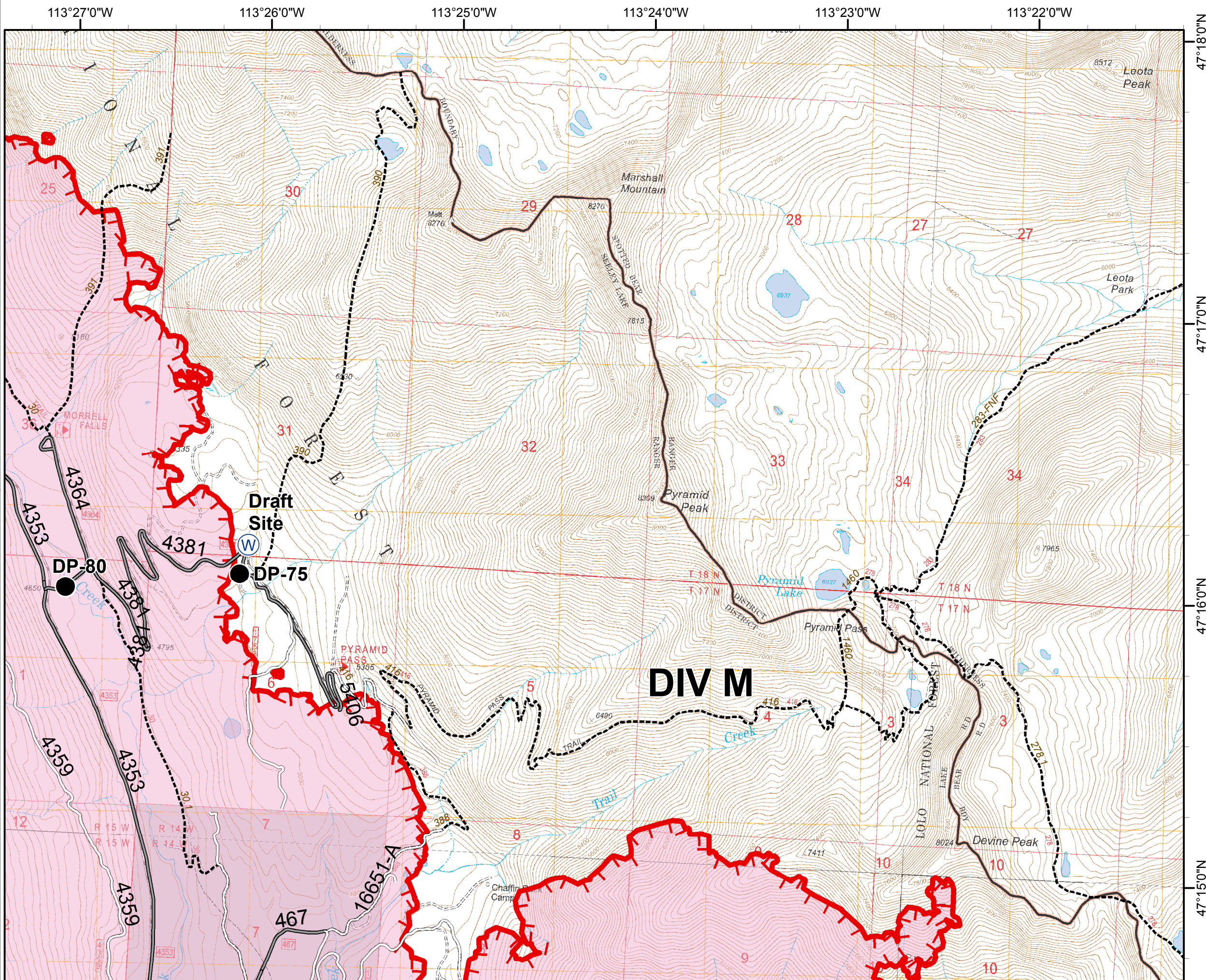
MT-LNF-001464

OPS DIV Map

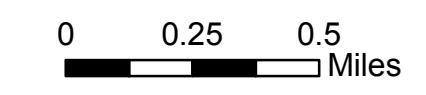
August 20, 2017

15,357 Acres (IR Flight 8/19/17 @ 2051)

DIV B - North



- Structures
- Drop Point
- Water Source
- Uncontrolled Fire Edge
- Fire Area



113°26'0"W 113°25'0"W 113°24'0"W 113°23'0"W 113°22'0"W 113°21'0"W

Rice Ridge Fire

MT-LNF-001464

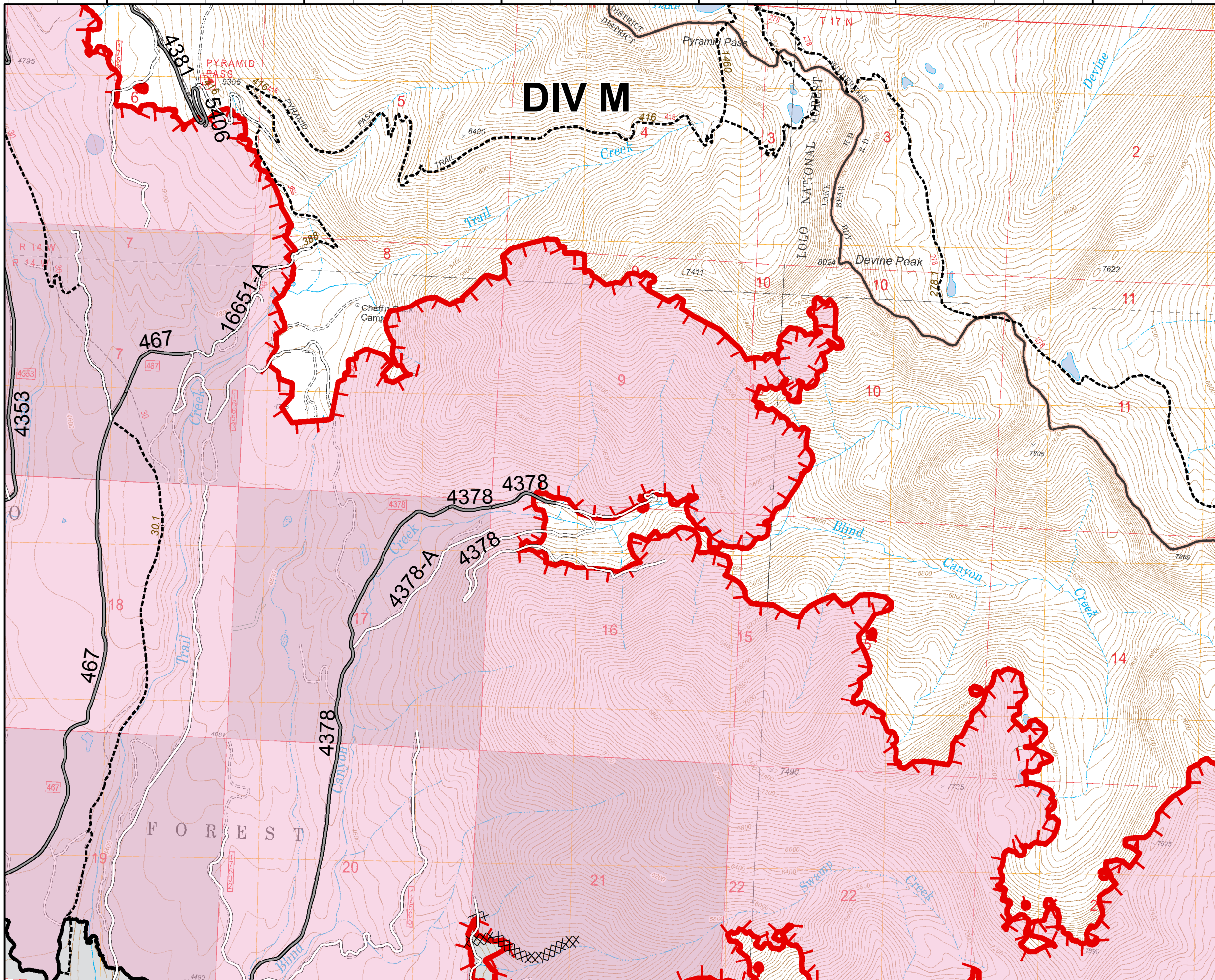
OPS DIV Map

August 20, 2017

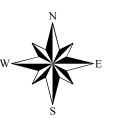
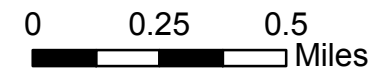
15,357 Acres (IR Flight 8/19/17 @ 2051)

DIV B - South

47°16'0"N
47°15'0"N
47°14'0"N
47°13'0"N



- Structures
- ┃┃┃ Uncontrolled Fire Edge
- XXXXXX Completed Dozer Line
- Completed Line
- Fire Area



113°30'0"W 113°29'0"W 113°28'0"W 113°27'0"W 113°26'0"W 113°25'0"W 113°24'0"W

Rice Ridge Fire

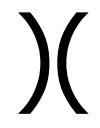











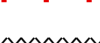





MT-LNF-001464

OPS DIV Map

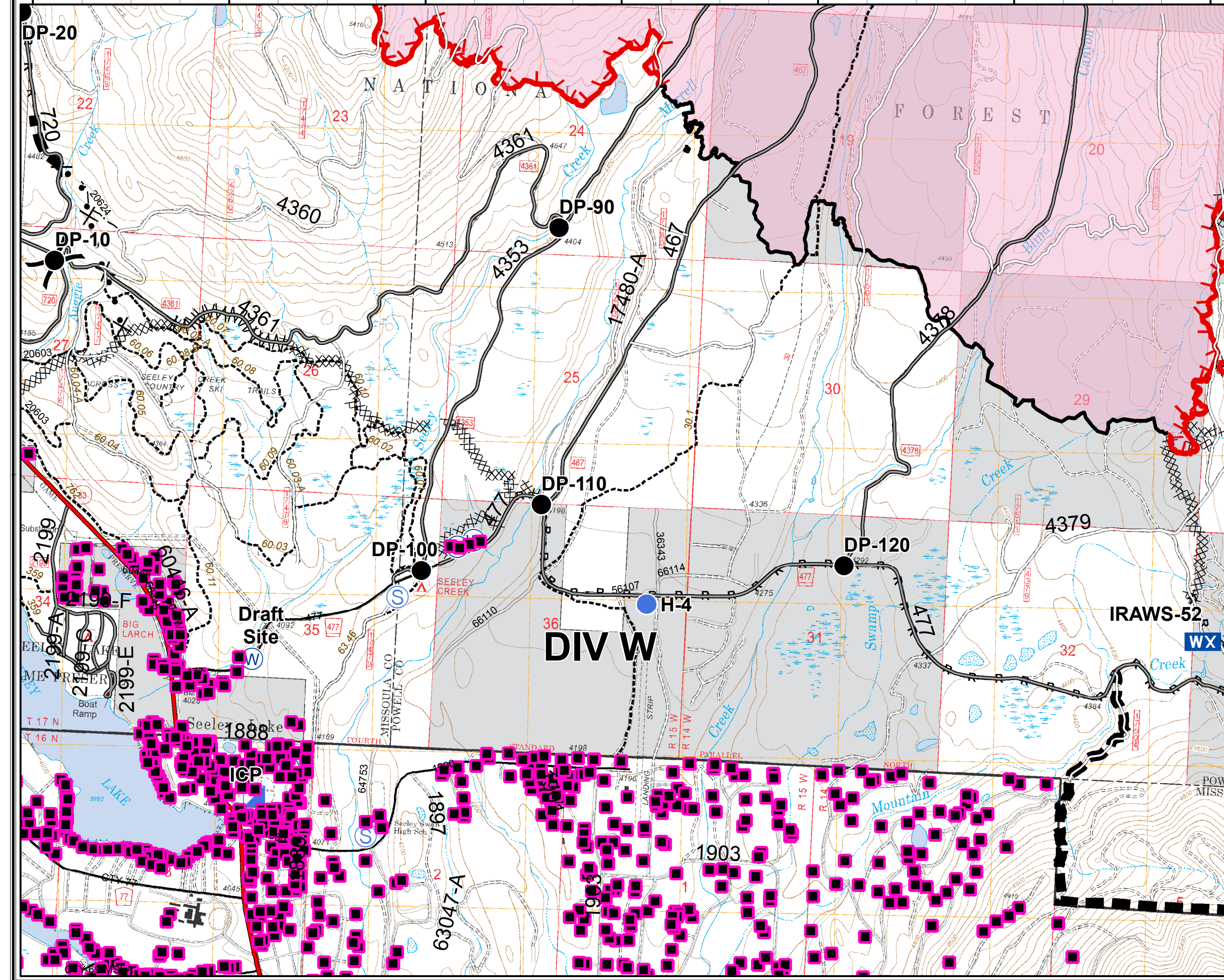
August 20, 2017

15,357 Acres (IR Flight 8/19/17 @ 2051)

DIV W

-  Division
 -  Structures
 -  Drop Point
 -  Helispot
 -  Incident Command Post
 -  Mobile Weather Unit
 -  Repeater
 -  Staging Area
 -  Water Source
 -  Road Closure (Need Div Sup Approval)
 -  Uncontrolled Fire Edge
 -  Completed Dozer Line
 -  Completed Line
 -  R - R - Road as Completed Line
 -  Line Break Completed
 -  Planned Fire Line
 -  Proposed Dozer Line
 -  Fire Area
- 0 0.25 0.5 Miles
- 

47°13'0"N
47°12'0"N
47°11'0"N



Rice Ridge Fire

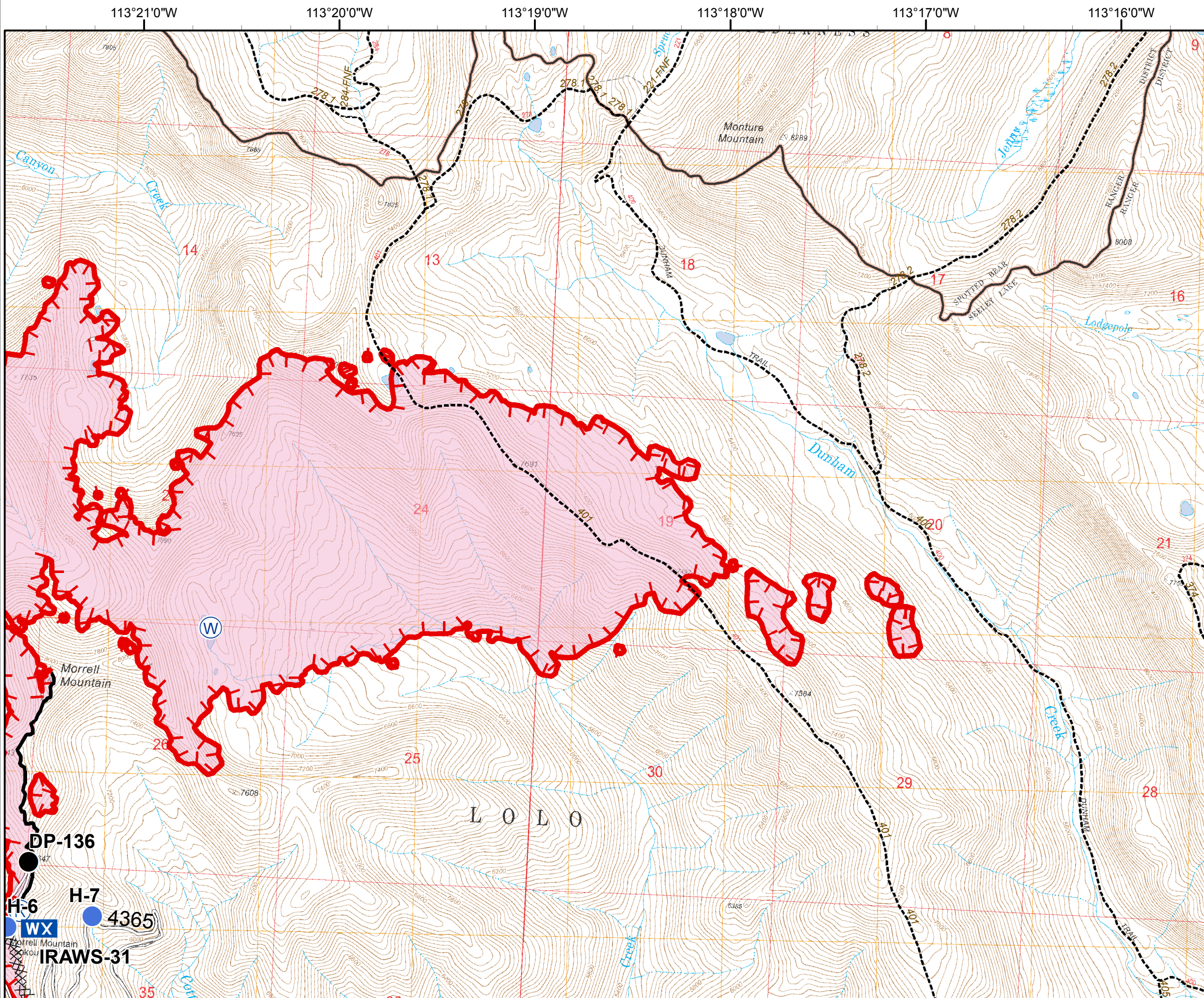
MT-LNF-001464

OPS DIV Map

August 20, 2017

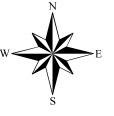
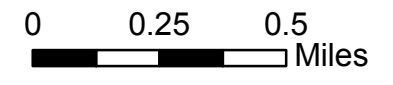
15,357 Acres (IR Flight 8/19/17 @ 2051)

DIV T - East



47°14'0"N
47°13'0"N
47°12'0"N

- Structures
- Drop Point
- Helispot
- WX Mobile Weather Unit
- R Repeater
- W Water Source
- Uncontrolled Fire Edge
- Completed Dozer Line
- Completed Line
- Fire Area



Rice Ridge Fire

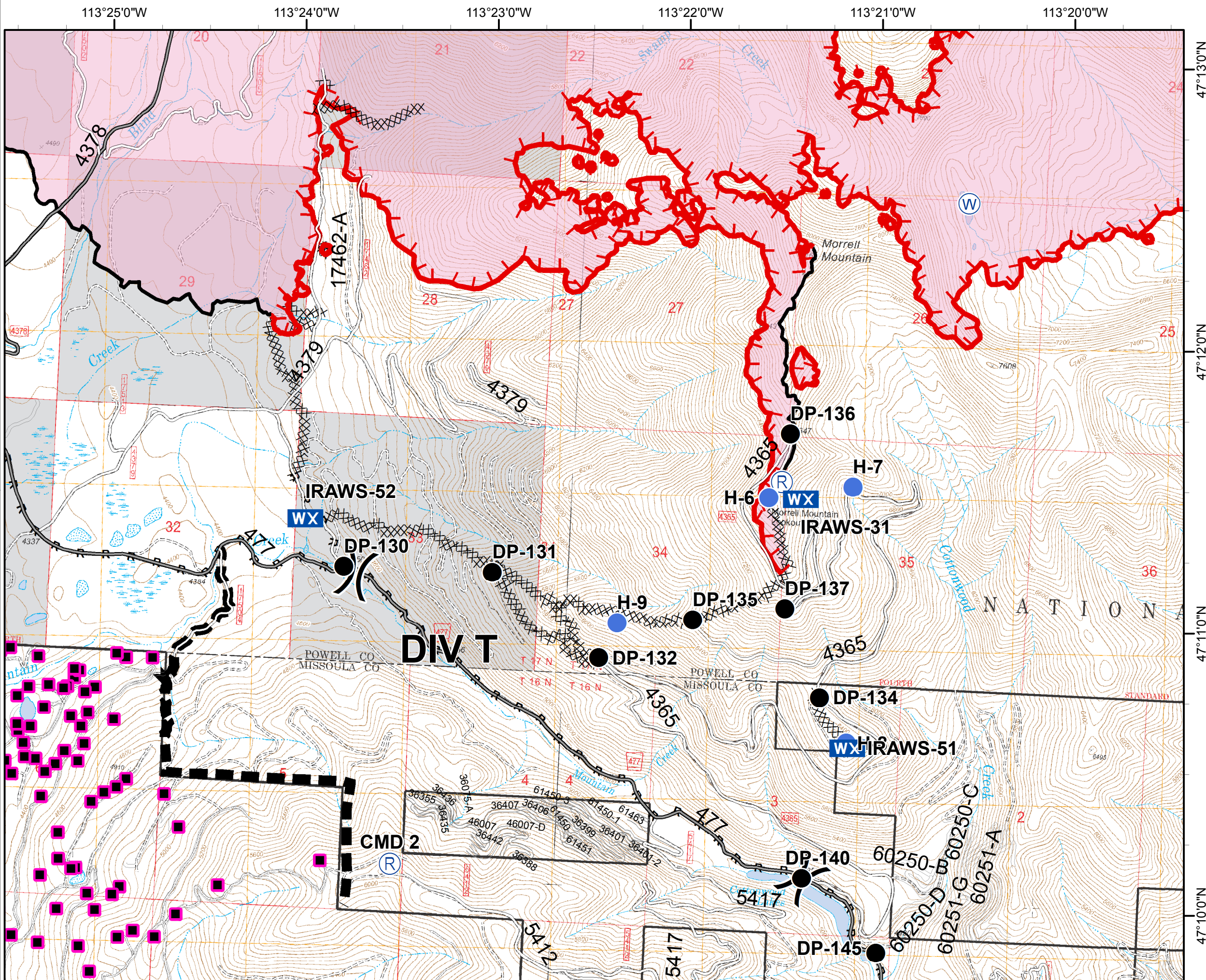
MT-LNF-001464














OPS DIV Map

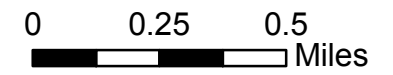
August 20, 2017

15,357 Acres (IR Flight 8/19/17 @ 2051)

DIV T - West



-  Division
-  Structures
-  Drop Point
-  Helispot
-  Mobile Weather Unit
-  Repeater
-  Water Source
-  Uncontrolled Fire Edge
-  Completed Dozer Line
-  Completed Line
-  Road as Completed Line
-  Planned Fire Line
-  Fire Area



Rice Ridge Fire

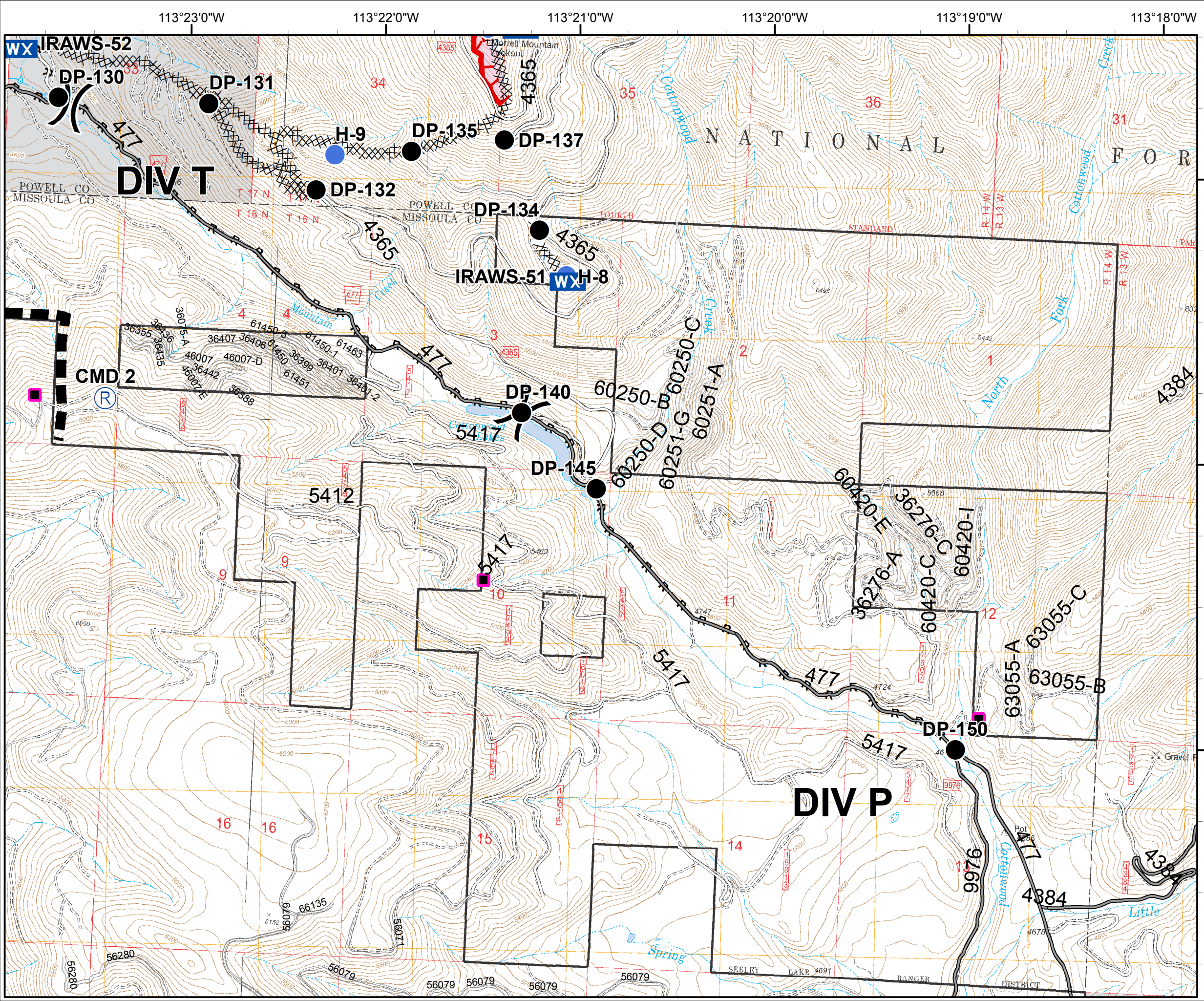
MT-LNF-001464

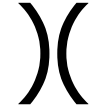







OPS DIV Map

August 20, 2017

15,357 Acres (IR Flight 8/19/17 @ 2051)

DIV P - West



-  Division
 -  Structures
 -  Drop Point
 -  Helispot
 -  Mobile Weather Unit
 -  Repeater
 -  Uncontrolled Fire Edge
 -  Completed Dozer Line
 -  Completed Line
 -  R - R - Road as Completed Line
 -  Planned Fire Line
 -  Fire Area
- 0 0.25 0.5 Miles
- 

Rice Ridge Fire

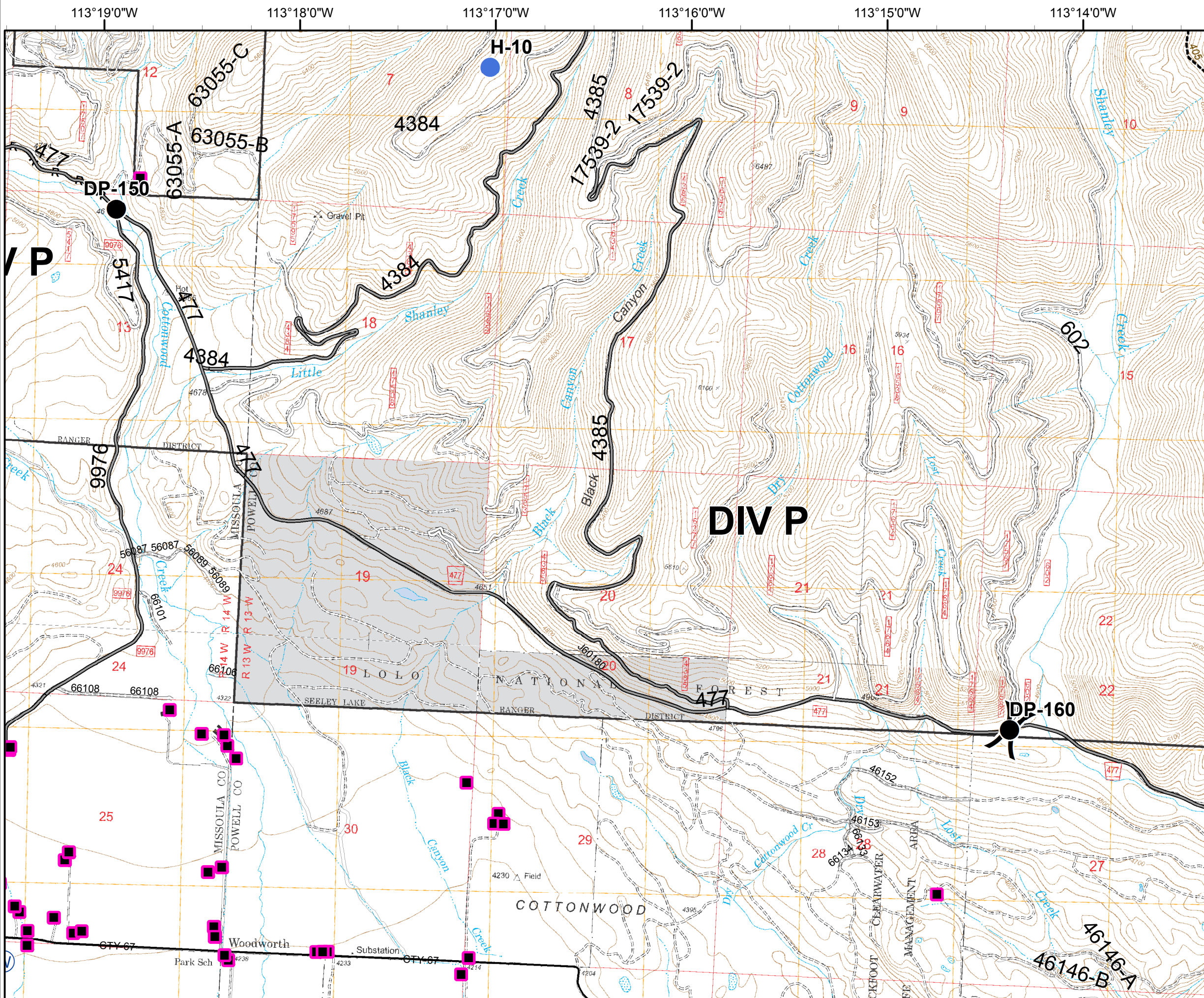
MT-LNF-001464

OPS DIV Map

August 20, 2017

15,357 Acres (IR Flight 8/19/17 @ 2051)

DIV P - East



() Division

■ Structures

● Drop Point

● Helispot

⊙ Water Source

R - R - Road as Completed Line

0 0.25 0.5 Miles

