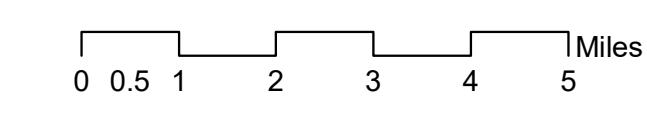


Air Operations Map RICE RIDGE FIRE

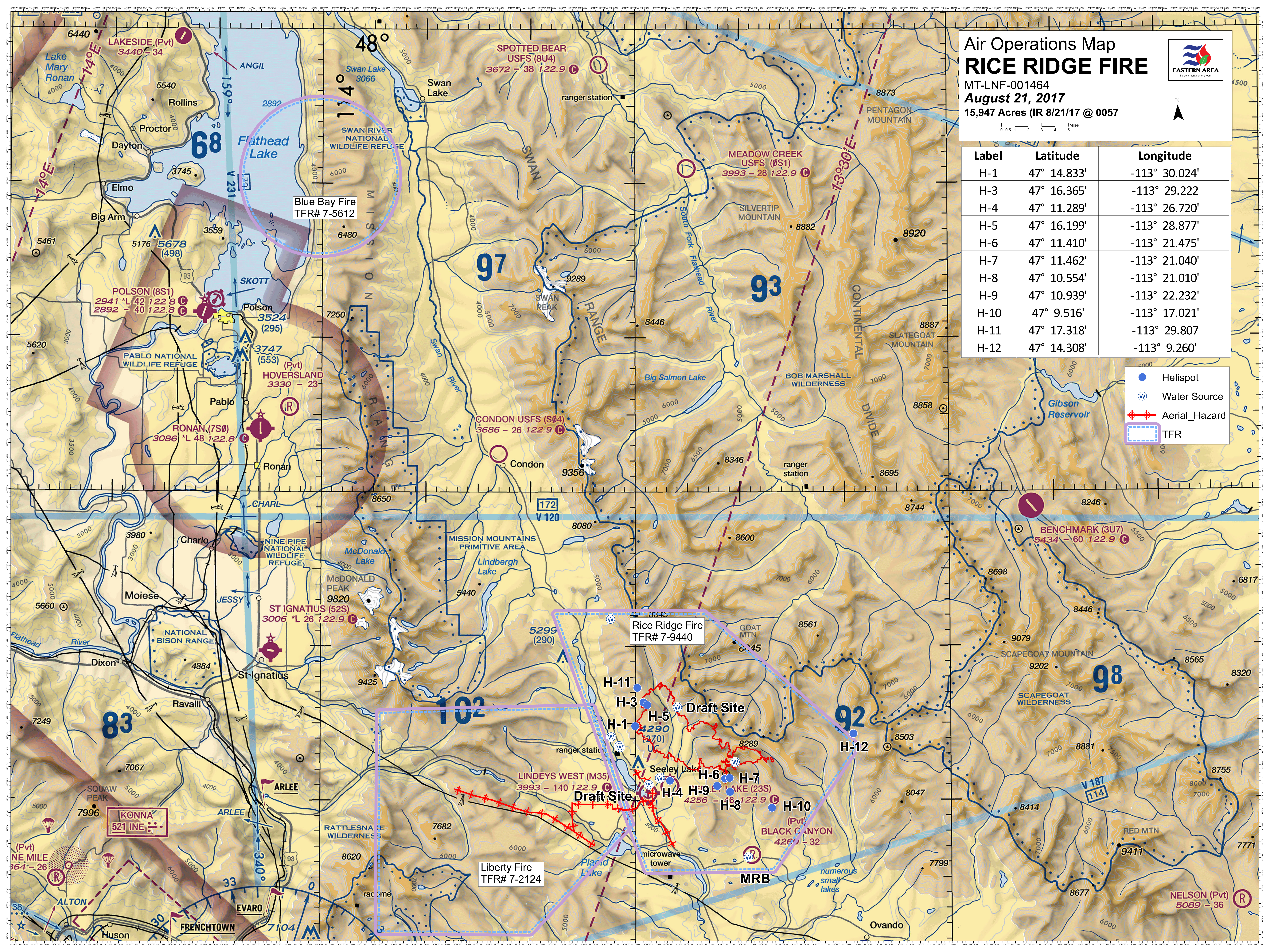


MT-LNF-001464
August 21, 2017
15,947 Acres (IR 8/21/17 @ 0057)



Label	Latitude	Longitude
H-1	47° 14.833'	-113° 30.024'
H-3	47° 16.365'	-113° 29.222
H-4	47° 11.289'	-113° 26.720'
H-5	47° 16.199'	-113° 28.877'
H-6	47° 11.410'	-113° 21.475'
H-7	47° 11.462'	-113° 21.040'
H-8	47° 10.554'	-113° 21.010'
H-9	47° 10.939'	-113° 22.232'
H-10	47° 9.516'	-113° 17.021'
H-11	47° 17.318'	-113° 29.807
H-12	47° 14.308'	-113° 9.260'

- Helispot
- Water Source
- Aerial_Hazard
- TFR



Blue Bay Fire
TFR# 7-5612

Rice Ridge Fire
TFR# 7-9440

Liberty Fire
TFR# 7-2124

KONNA
521 INE

Draft Site

Draft Site

MRB

H-11

H-3

H-1

H-5

H-6

H-7

H-4

H-9

H-8

H-10

H-12

H-2

BLACK CANYON
4260 - 32

LINDEYS WEST (M35)
3993 - 140 122.9

ST IGNATIUS (52S)
3006 *L 26 122.9

RONAN (7S0)
3086 *L 48 122.8

HOVERSLAND
3330 - 23

POLSON (8S1)
2941 *L 42 122.8
2892 - 40 122.8

CONDON USFS (S04)
3686 - 26 122.9

MEADOW CREEK
USFS (0S1)
3993 - 28 122.9

SPOTTED BEAR
USFS (8U4)
3672 - 38 122.9

LAKESIDE (Pvt)
3440 - 34

NELSON (Pvt)
5089 - 36

ALTON

FRENCHTOWN

Ovando

RED MTN

SCAPEGOAT MOUNTAIN

SCAPEGOAT WILDERNESS

SCAPEGOAT MOUNTAIN

BENCHMARK (3U7)
5434 - 60 122.9

GIBSON RESERVOIR

SLATEGOAT MOUNTAIN

8920

PENTAGON MOUNTAIN

8873

98

92

93

102

97

68

83

33

38

30

33

33

33

33

33

33

33

33

33

38

30

33

33

33

33

33

33

33

33

33