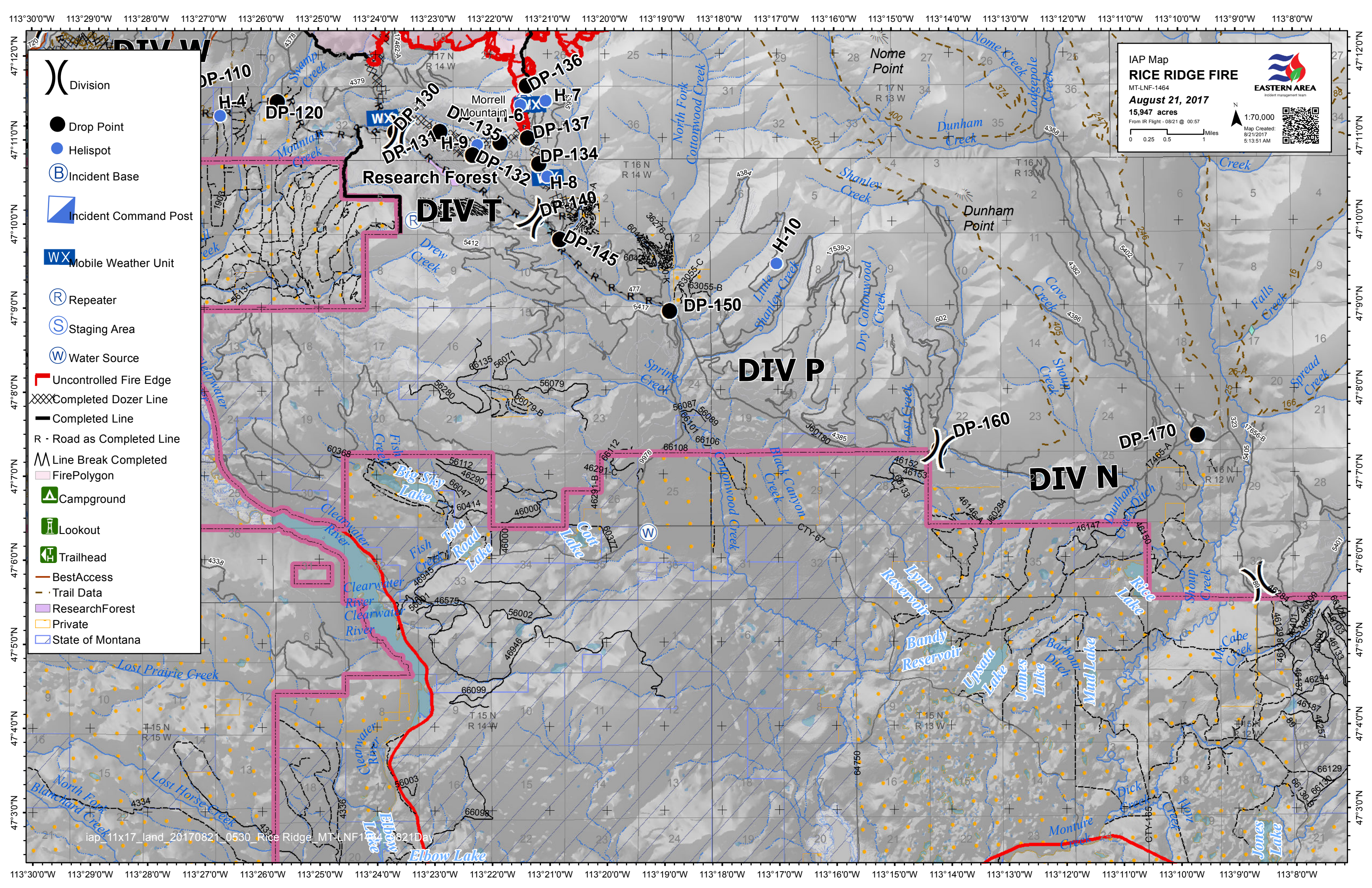



- () Division
- ⊗ Fire Origin (07/24/2017)
- Drop Point
- Helispot
- (B) Incident Base
- ▢ Incident Command Post
- WX Mobile Weather Unit
- (R) Repeater
- (S) Staging Area
- (W) Water Source
- Uncontrolled Fire Edge
- XXXX Completed Dozer Line
- Completed Line
- H - Hand Line
- R - Road as Completed Line
- Λ Line Break Completed
- ⊗ Proposed Dozer Line
- Fire Polygon
- 🏠 Ranger Station
- 🏕 Campground
- 🏠 Lookout
- 📍 Point of Interest
- 🚶 Trailhead
- 🏠 Viewing Area
- Best Access
- Trail Data
- Morrell Complex
- Research Forest
- Private
- State of Montana

IAP Map
RICE RIDGE FIRE
MT-LNF-1464
August 21, 2017
15,947 acres
From IR Flight - 08/21 @ 00:57

1:70,000
Map Created: 8/21/2017 5:13:51 AM




IAP Map
RICE RIDGE FIRE
 MT-LNF-1464
August 21, 2017
 15,947 acres
 From IR Flight - 08/21 @ 00:57



EASTERN AREA
 Incident Management Team

Scale: 1:70,000
 Map Created: 8/21/2017 5:13:51 AM



- () Division
- Drop Point
- Helispot
- (B) Incident Base
- (IC) Incident Command Post
- (WX) Mobile Weather Unit
- (R) Repeater
- (S) Staging Area
- (W) Water Source
- Uncontrolled Fire Edge
- XXXX Completed Dozer Line
- Completed Line
- R - Road as Completed Line
- Line Break Completed
- Fire Polygon
- ▲ Campground
- Ⓜ Lookout
- Ⓜ Trailhead
- Best Access
- Trail Data
- Research Forest
- Private
- State of Montana

