

# Rice Ridge Fire

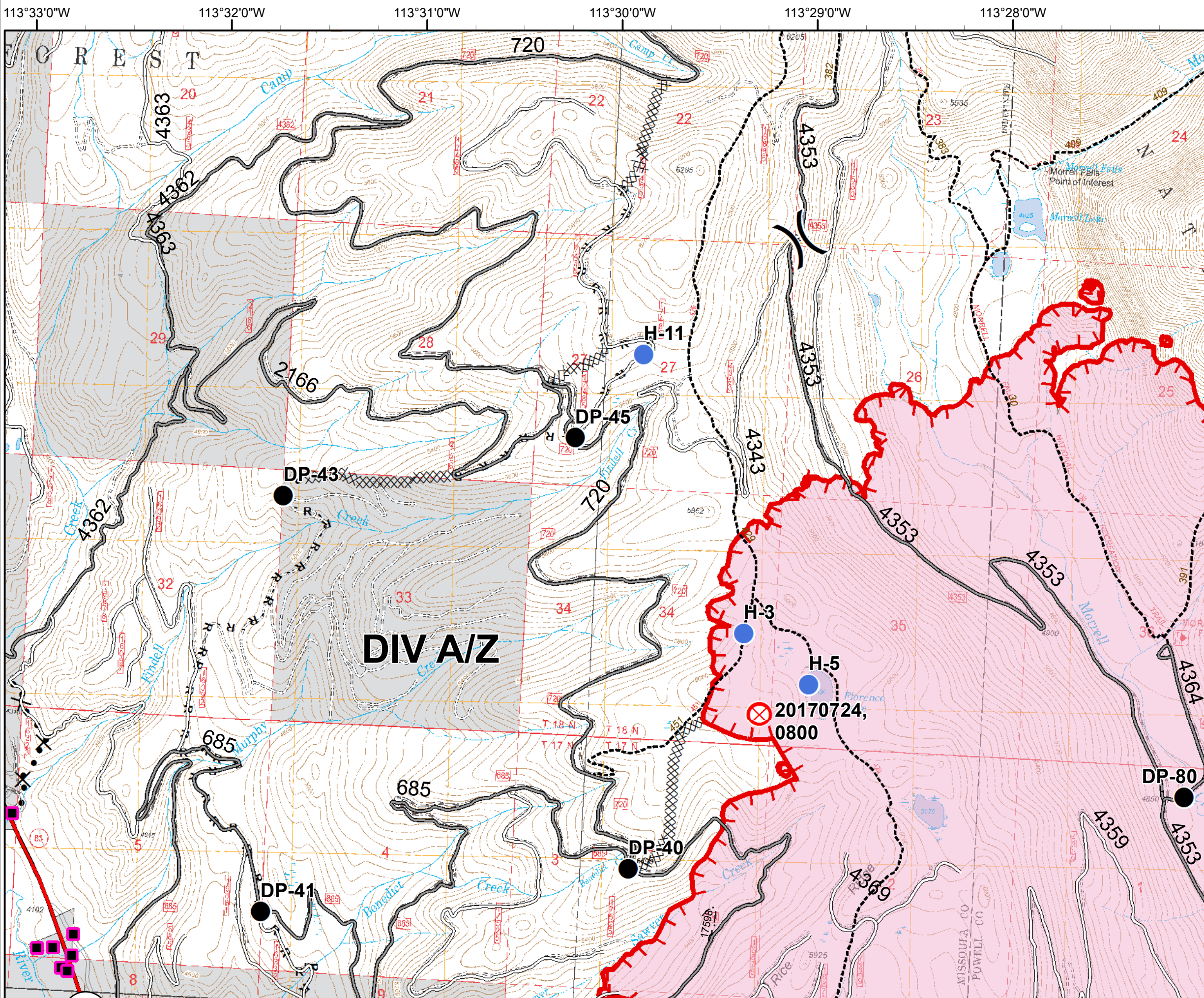
MT-LNF-001464

OPS DIV Map

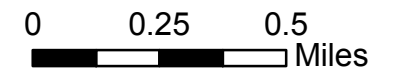
August 21, 2017

15,947 Acres (IR Flight 8/21/17 @ 00:57)

DIV A/Z - North



-  Division
-  Structures
-  Drop Point
-  Fire Origin
-  Helispot
-  Uncontrolled Fire Edge
-  Completed Dozer Line
-  R - R - Road as Completed Line
-  Proposed Dozer Line
-  Fire Area



# Rice Ridge Fire

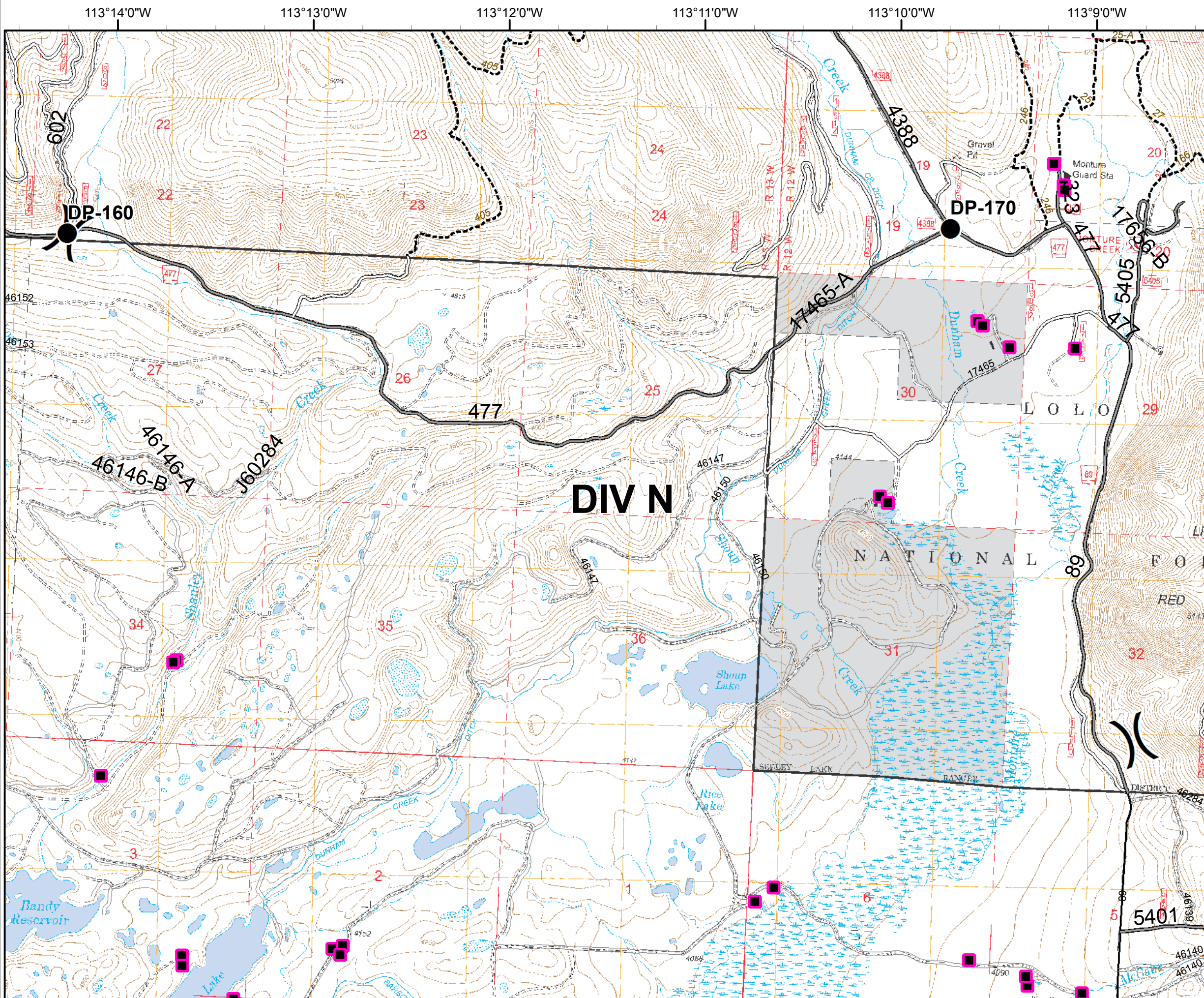
MT-LNF-001464

OPS DIV Map

August 21, 2017

15,947 Acres (IR Flight 8/21/17 @ 00:57)

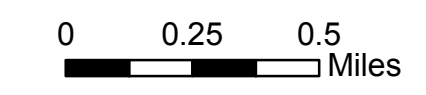
**DIV N**



( ) Division

■ Structures

● Drop Point



# Rice Ridge Fire

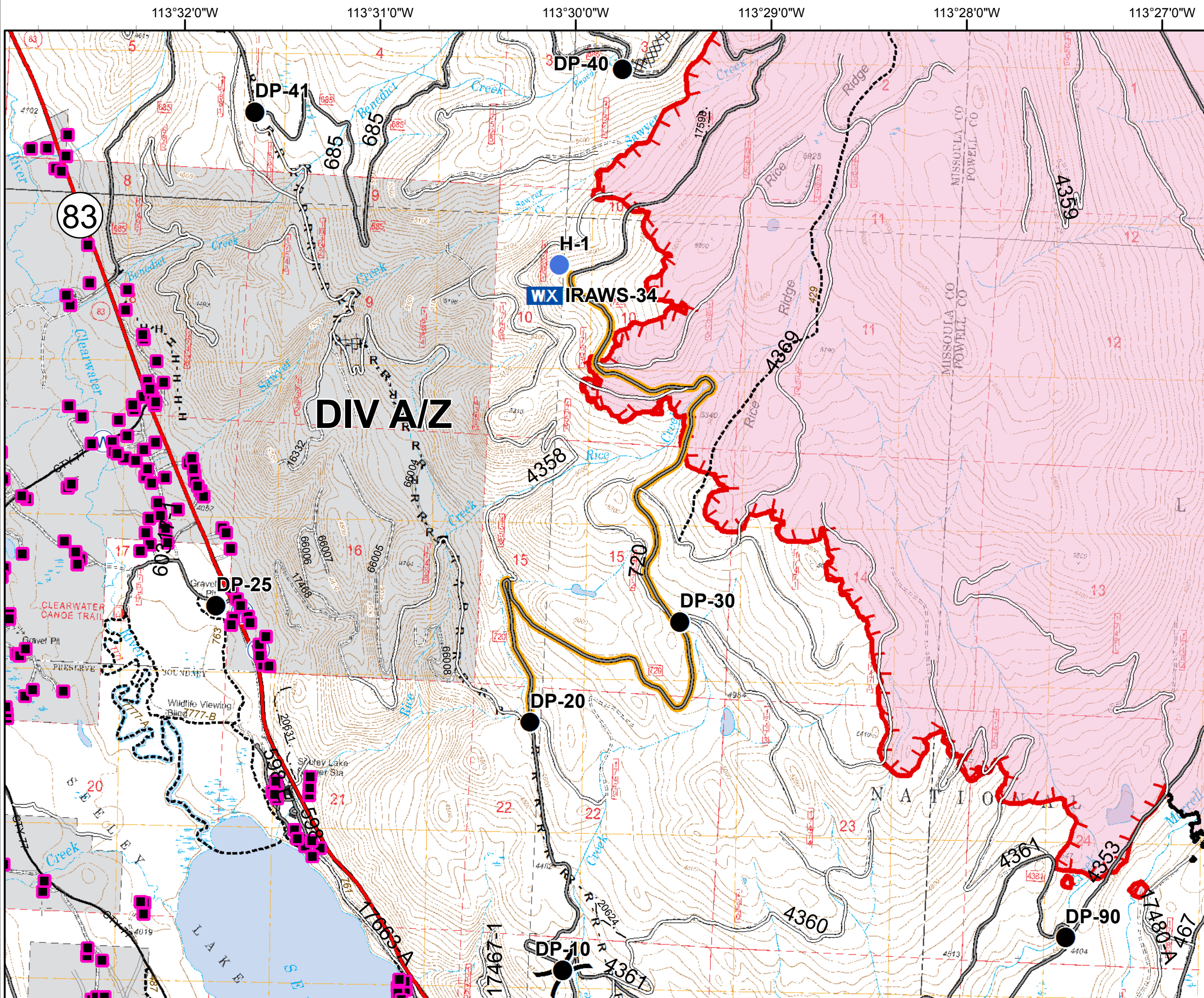
MT-LNF-001464

OPS DIV Map

August 21, 2017

15,947 Acres (IR Flight 8/21/17 @ 00:57)

**DIV A/Z - South**



113°32'0"W 113°31'0"W 113°30'0"W 113°29'0"W 113°28'0"W 113°27'0"W

47°15'0"N

47°14'0"N

47°13'0"N

- ( ) Division
  - Structures
  - Drop Point
  - Helispot
  - WX Mobile Weather Unit
  - Ⓜ Water Source
  - Road Closure (Need Div Sup Approval)
  - ┌┐ Uncontrolled Fire Edge
  - XXXXX Completed Dozer Line
  - Completed Line
  - H - H - Hand Line
  - R - R - Road as Completed Line
  - Fire Area
- 0 0.25 0.5 Miles



# Rice Ridge Fire

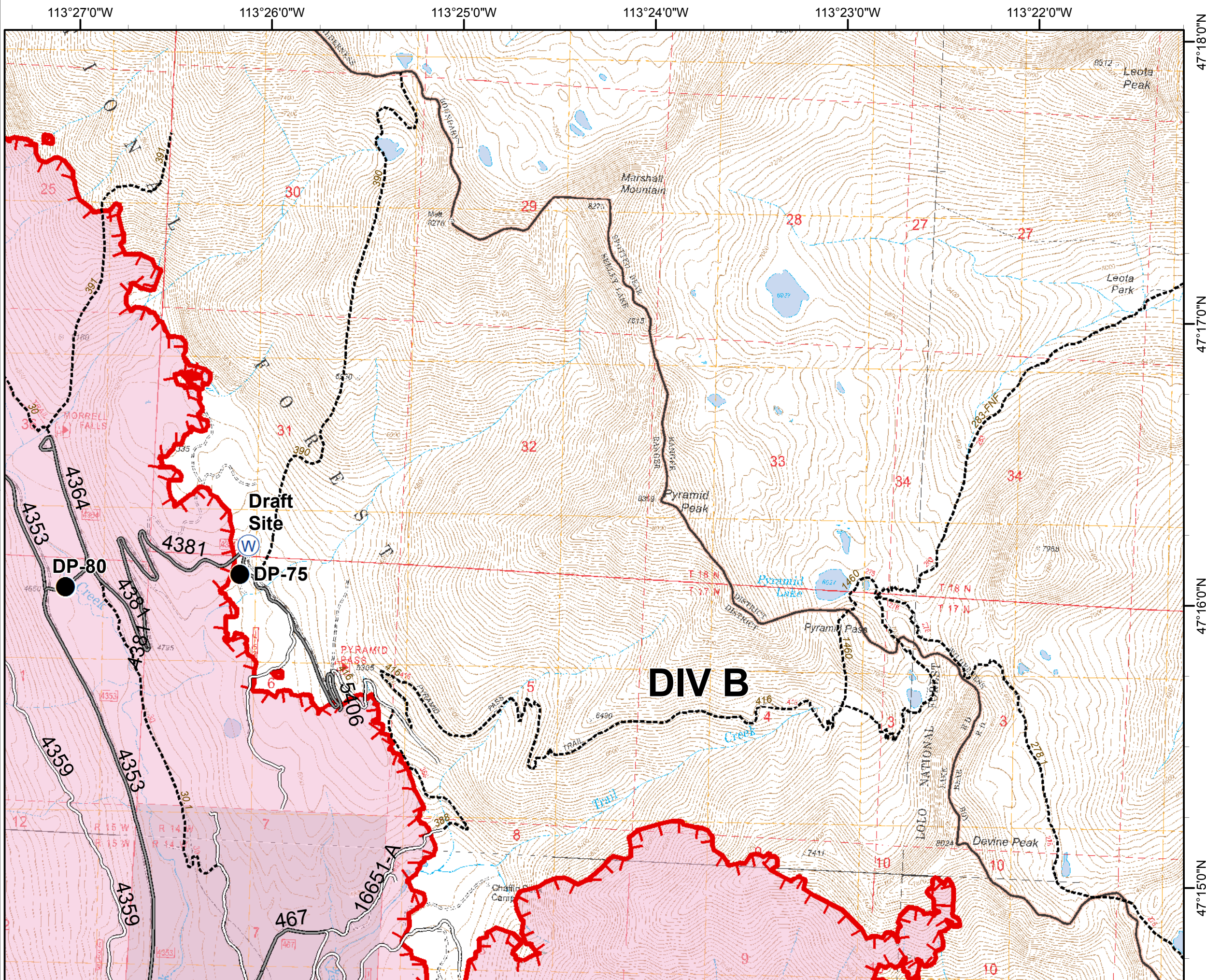
MT-LNF-001464

OPS DIV Map

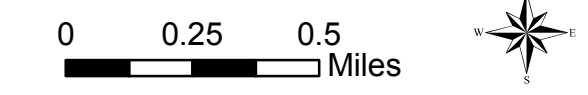
August 21, 2017

15,947 Acres (IR Flight 8/21/17 @ 00:57)

**DIV B - North**



- Structures
- Drop Point
- ⊙ Water Source
- Uncontrolled Fire Edge
- Fire Area



113°26'0"W 113°25'0"W 113°24'0"W 113°23'0"W 113°22'0"W 113°21'0"W

# Rice Ridge Fire

MT-LNF-001464

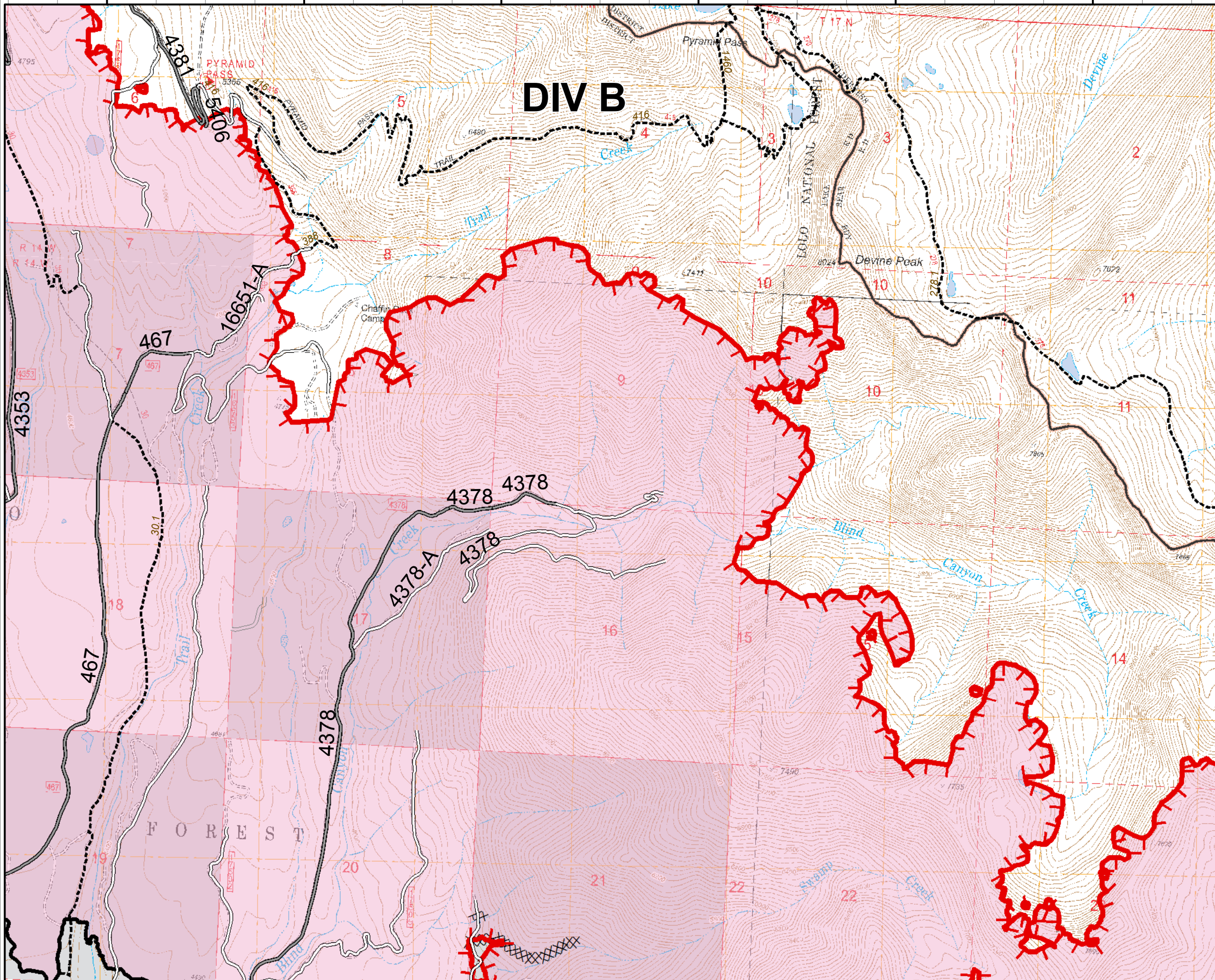
OPS DIV Map






August 21, 2017

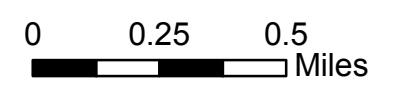
15,947 Acres (IR Flight 8/21/17 @ 00:57)

## DIV B - South

47°16'0"N  
47°15'0"N  
47°14'0"N  
47°13'0"N



-  Structures
-  Uncontrolled Fire Edge
-  Completed Dozer Line
-  Completed Line
-  Fire Area



113°30'0"W 113°29'0"W 113°28'0"W 113°27'0"W 113°26'0"W 113°25'0"W 113°24'0"W

# Rice Ridge Fire

MT-LNF-001464

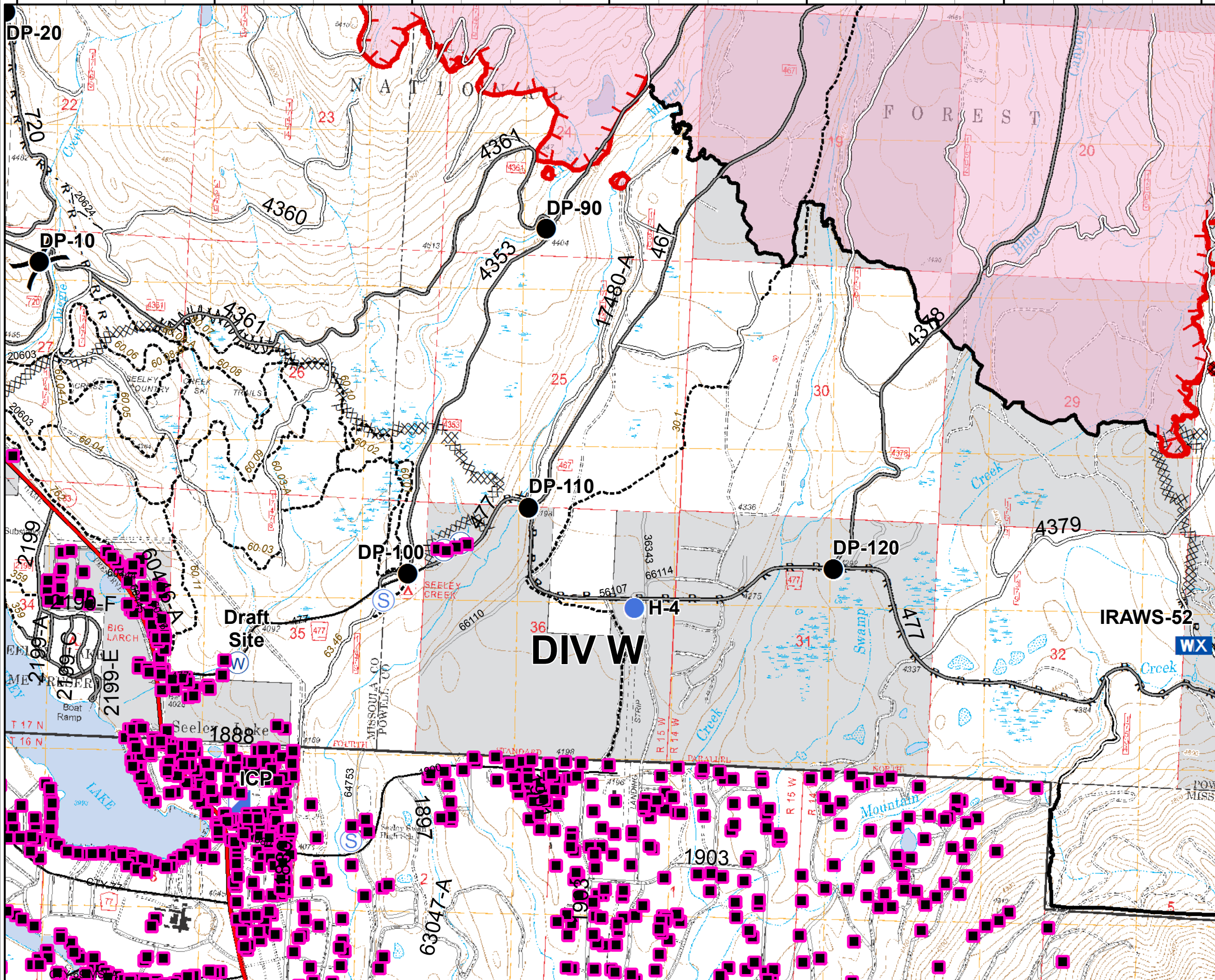
## OPS DIV Map

### August 21, 2017

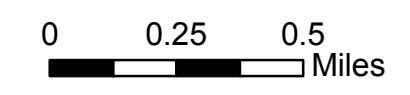
15,947 Acres (IR Flight 8/21/17 @ 00:57)

## DIV W

47°13'0"N  
47°12'0"N  
47°11'0"N



- Division
- Structures
- Drop Point
- Helispot
- Incident Command Post
- Mobile Weather Unit
- Staging Area
- Water Source
- Road Closure (Need Div Sup Approval)
- Uncontrolled Fire Edge
- Completed Dozer Line
- Completed Line
- R - R - Road as Completed Line
- Line Break Completed
- Fire Area



# Rice Ridge Fire

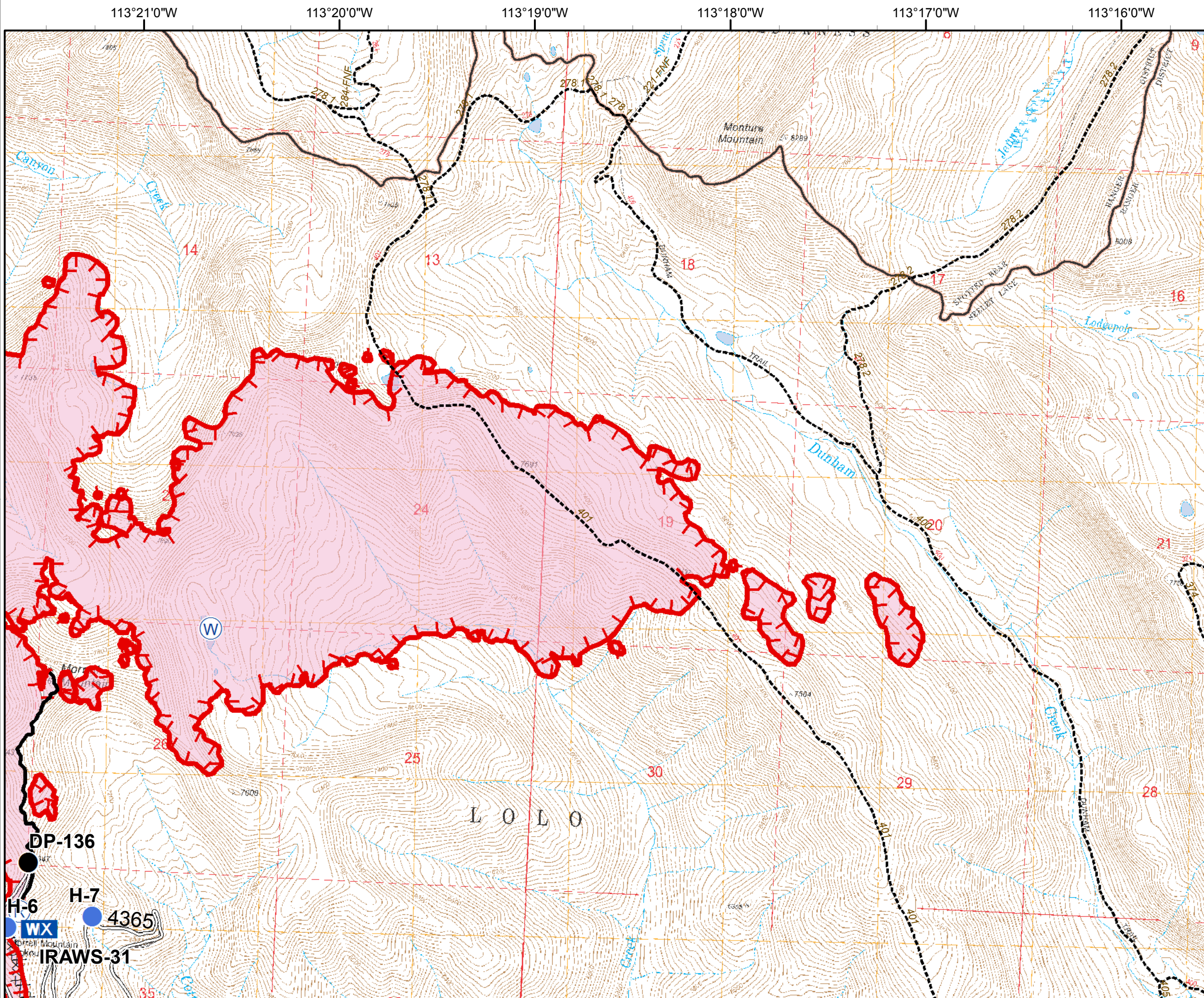
MT-LNF-001464

OPS DIV Map

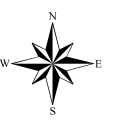
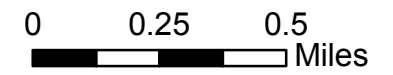
August 21, 2017

15,947 Acres (IR Flight 8/21/17 @ 00:57)

DIV T - East



- Structures
- Drop Point
- Helispot
- WX Mobile Weather Unit
- Repeater
- Water Source
- Uncontrolled Fire Edge
- Completed Dozer Line
- Completed Line
- Fire Area



# Rice Ridge Fire

MT-LNF-001464

OPS DIV Map

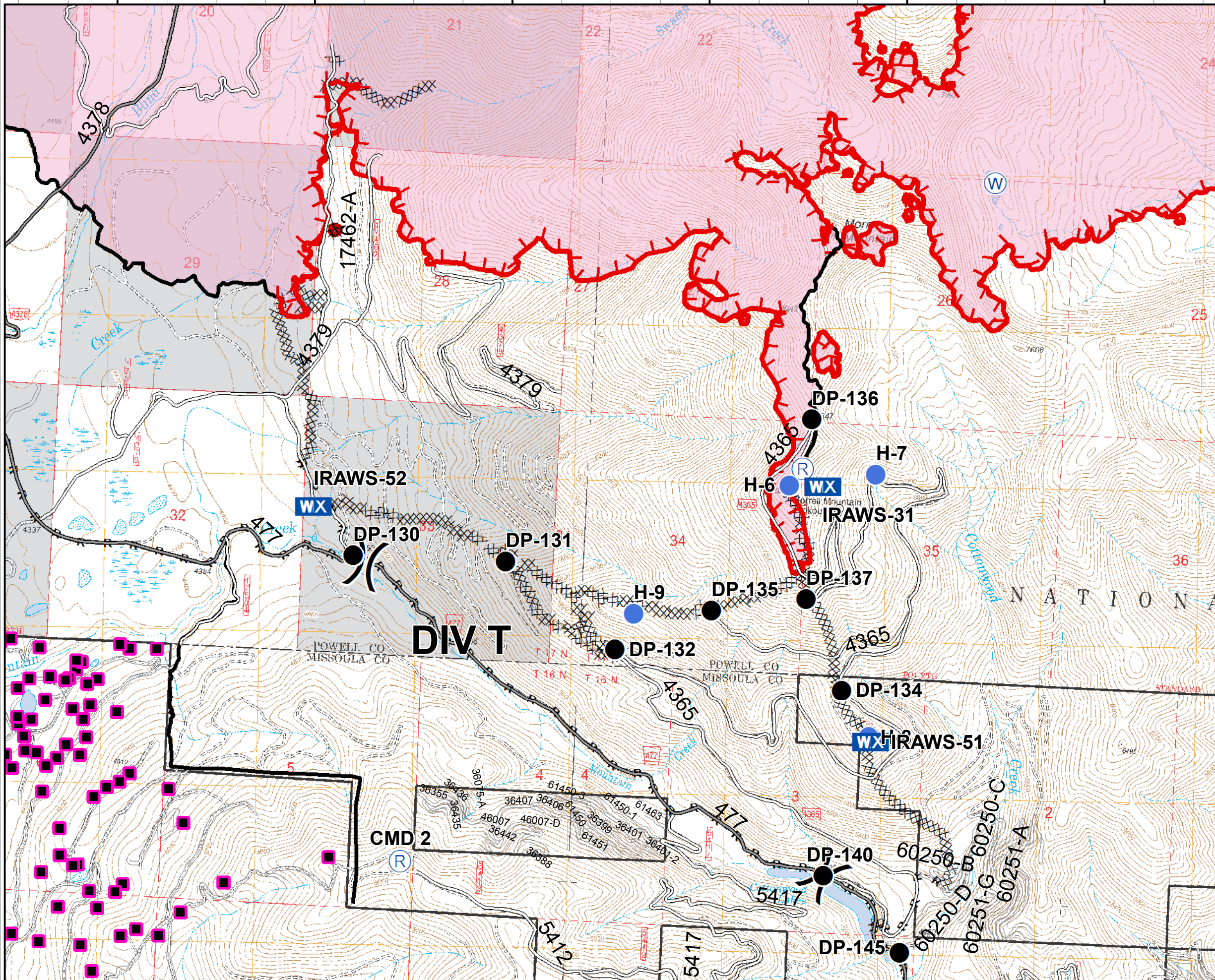
August 21, 2017

15,947 Acres (IR Flight 8/21/17 @ 00:57)

DIV T - West

113°25'0"W 113°24'0"W 113°23'0"W 113°22'0"W 113°21'0"W 113°20'0"W

47°13'0"N  
47°12'0"N  
47°11'0"N  
47°10'0"N



- Division
  - Structures
  - Drop Point
  - Helispot
  - Mobile Weather Unit
  - Repeater
  - Water Source
  - Uncontrolled Fire Edge
  - Completed Dozer Line
  - Completed Line
  - R - R - Road as Completed Line
  - Fire Area
- 0 0.25 0.5 Miles





# Rice Ridge Fire

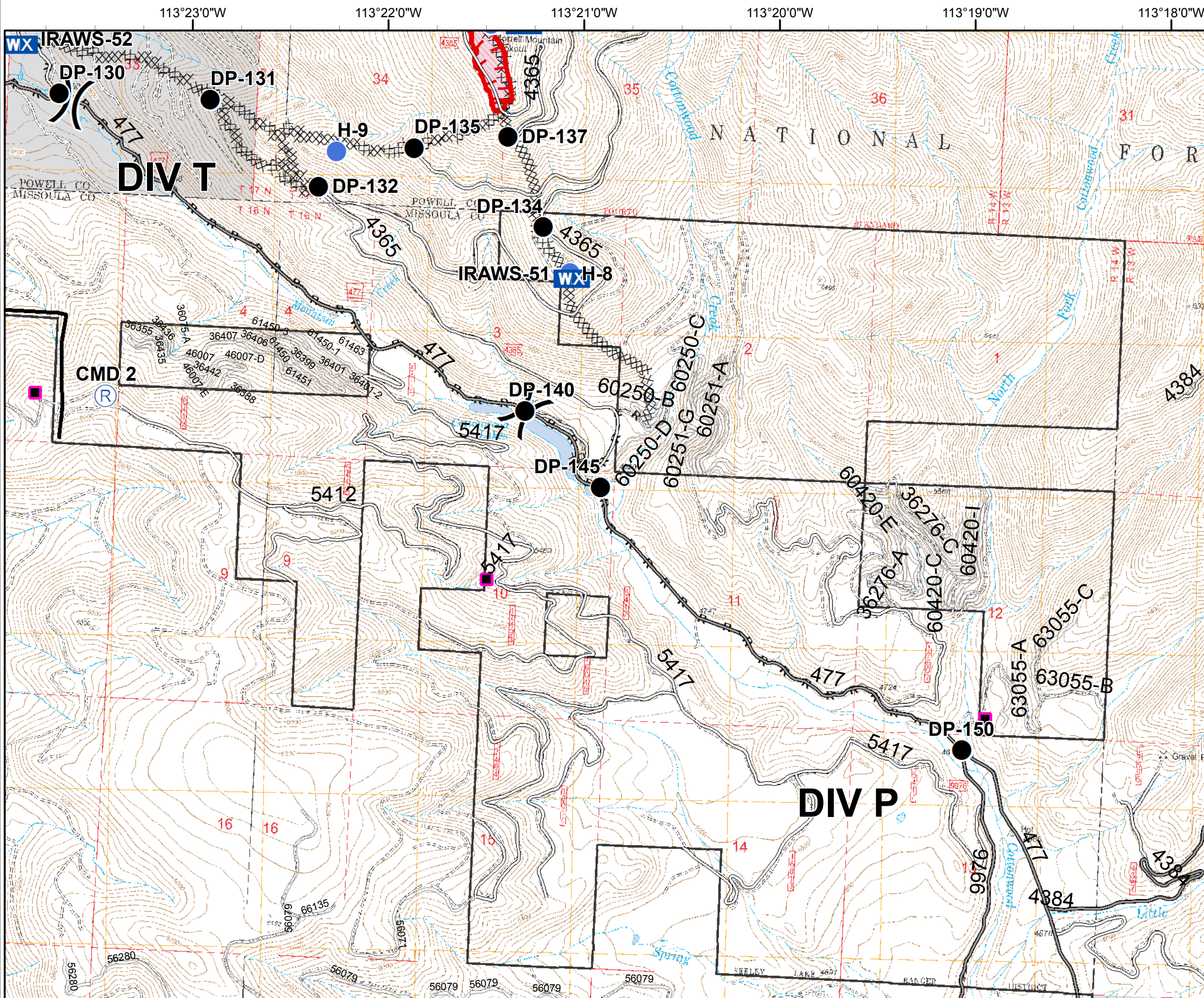
MT-LNF-001464

OPS DIV Map

August 21, 2017

15,947 Acres (IR Flight 8/21/17 @ 00:57)

**DIV P - West**



- Division
  - Structures
  - Drop Point
  - Helispot
  - Mobile Weather Unit
  - Repeater
  - Uncontrolled Fire Edge
  - Completed Dozer Line
  - Completed Line
  - R - R - Road as Completed Line
  - Fire Area
- 0 0.25 0.5 Miles

# Rice Ridge Fire

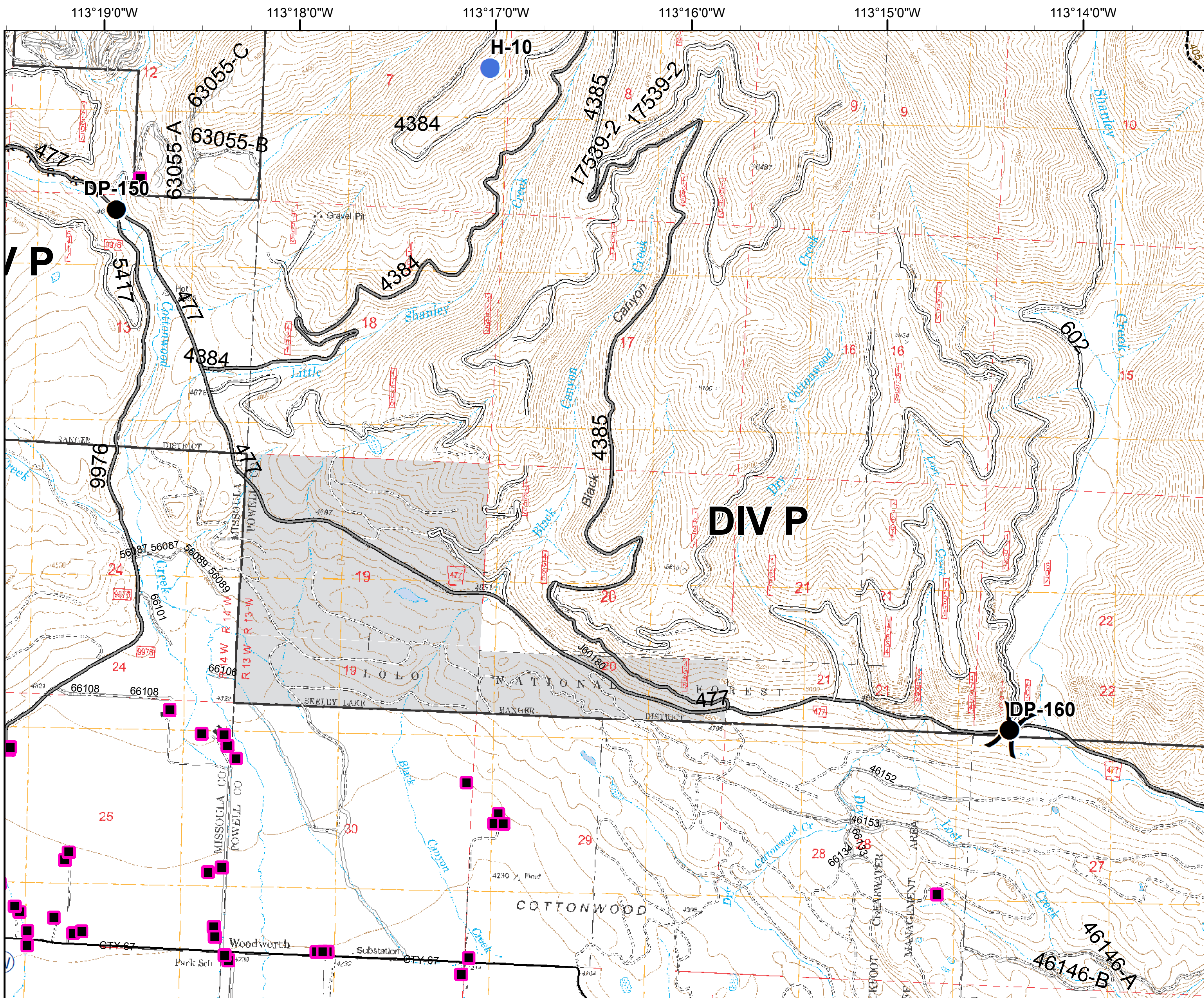
MT-LNF-001464

OPS DIV Map

August 21, 2017

15,947 Acres (IR Flight 8/21/17 @ 00:57)

**DIV P - East**



**( )** Division

**■** Structures

**●** Drop Point

**●** Helispot

**W** Water Source

R - R - Road as Completed Line

0 0.25 0.5 Miles

