

# Rice Ridge Fire

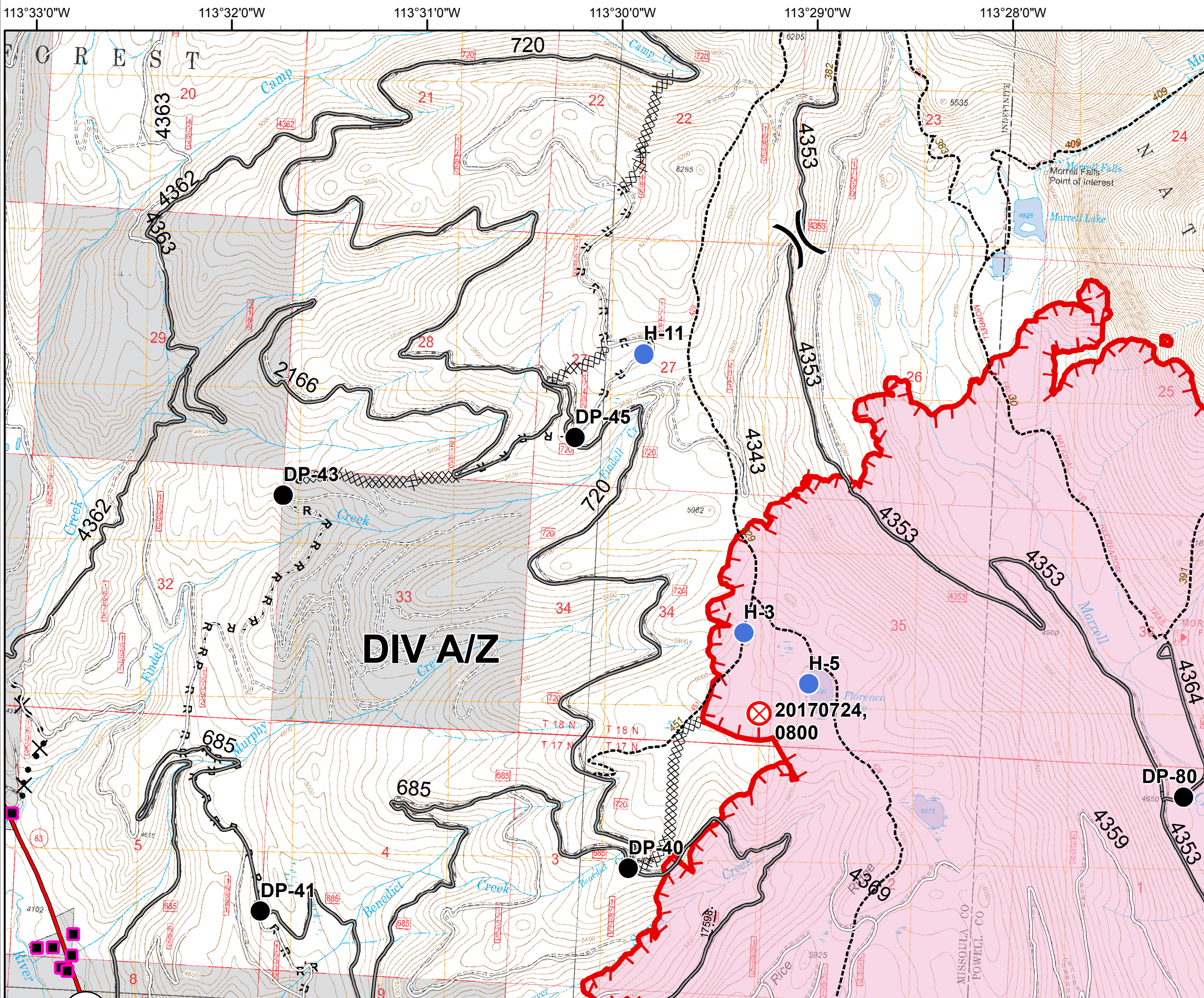
MT-LNF-001464

OPS DIV Map

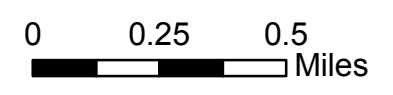
August 22, 2017

16,117 Acres (IR Flight 8/21/17 @ 23:54)

DIV A/Z - North



- ( ) Division
- Structures
- Drop Point
- ⊗ Fire Origin
- Helispot
- Uncontrolled Fire Edge
- XXXXX Completed Dozer Line
- R - R - Road as Completed Line
- X • • Proposed Dozer Line
- Fire Area



# Rice Ridge Fire

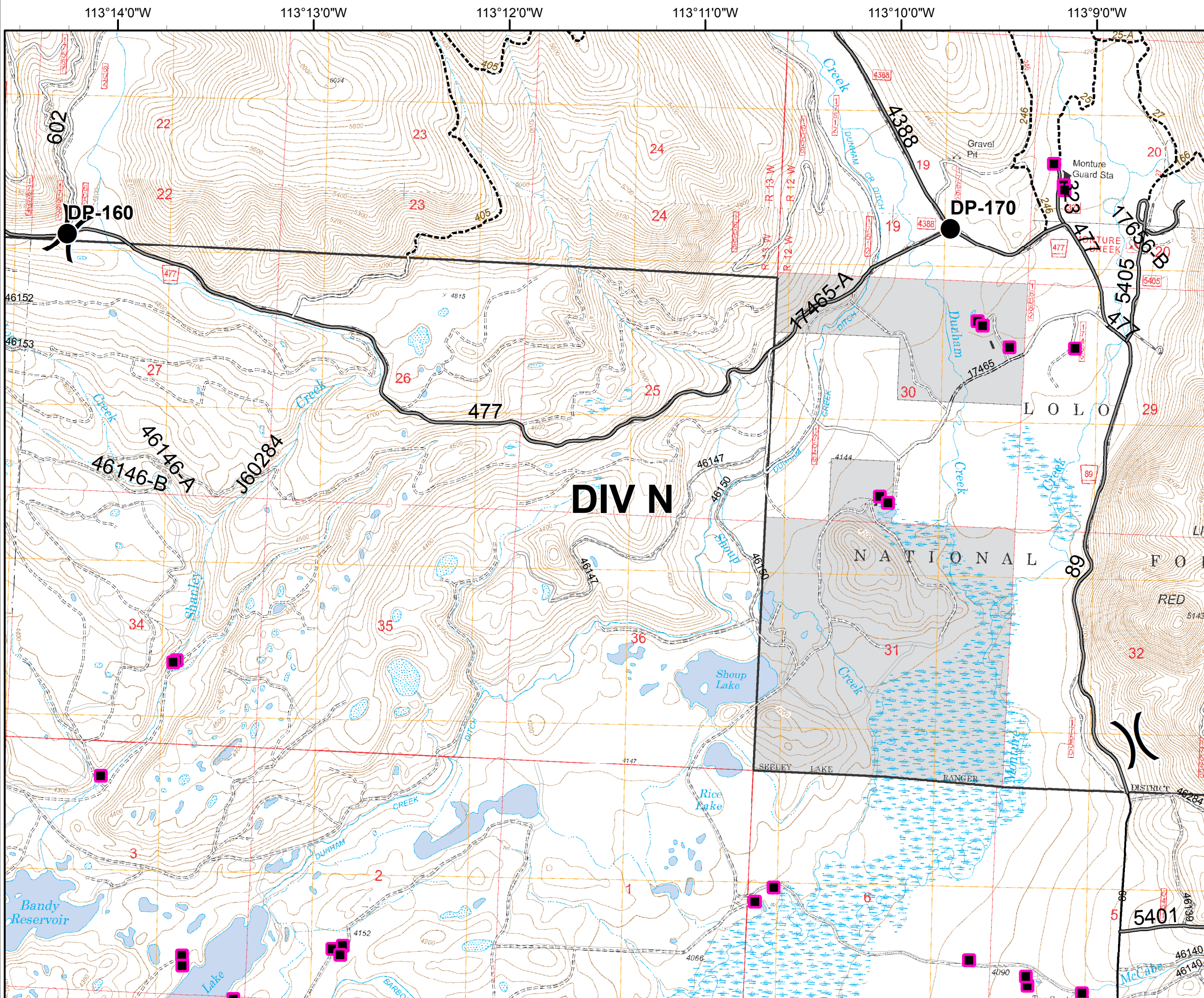
MT-LNF-001464

OPS DIV Map

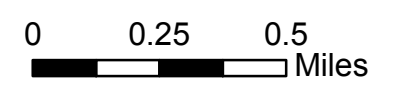
August 22, 2017

16,117 Acres (IR Flight 8/21/17 @ 23:54)

## DIV N



- Division
- Structures
- Drop Point



# Rice Ridge Fire

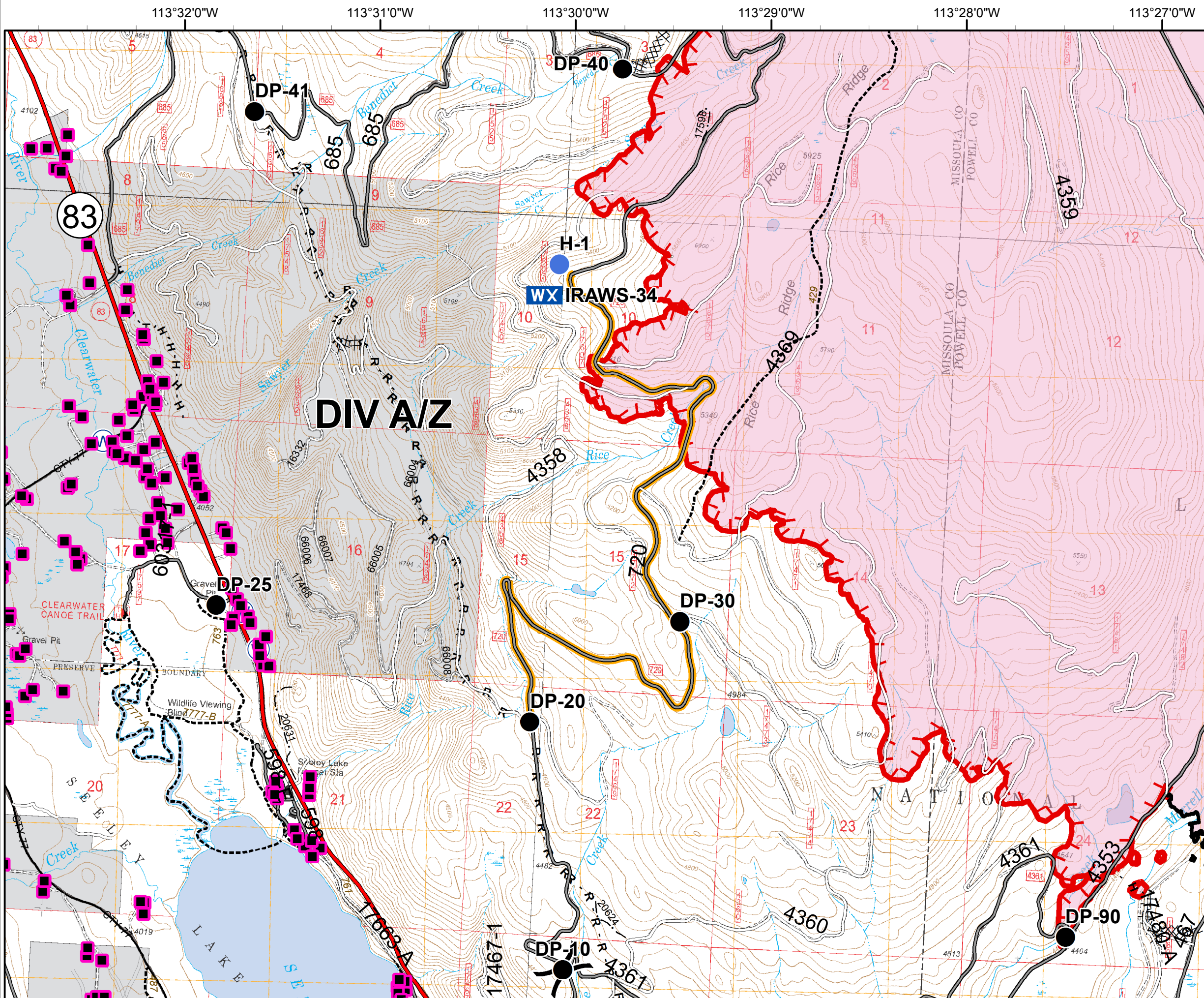
MT-LNF-001464















OPS DIV Map

August 22, 2017

16,117 Acres (IR Flight 8/21/17 @ 23:54)

**DIV A/Z - South**



-  Division
  -  Structures
  -  Drop Point
  -  Helispot
  -  Mobile Weather Unit
  -  Water Source
  -  Road Closure (Need Div Sup Approval)
  -  Uncontrolled Fire Edge
  -  Completed Dozer Line
  -  Completed Line
  -  Hand Line
  -  Road as Completed Line
  -  Fire Area
- 0 0.25 0.5 Miles
- 

# Rice Ridge Fire

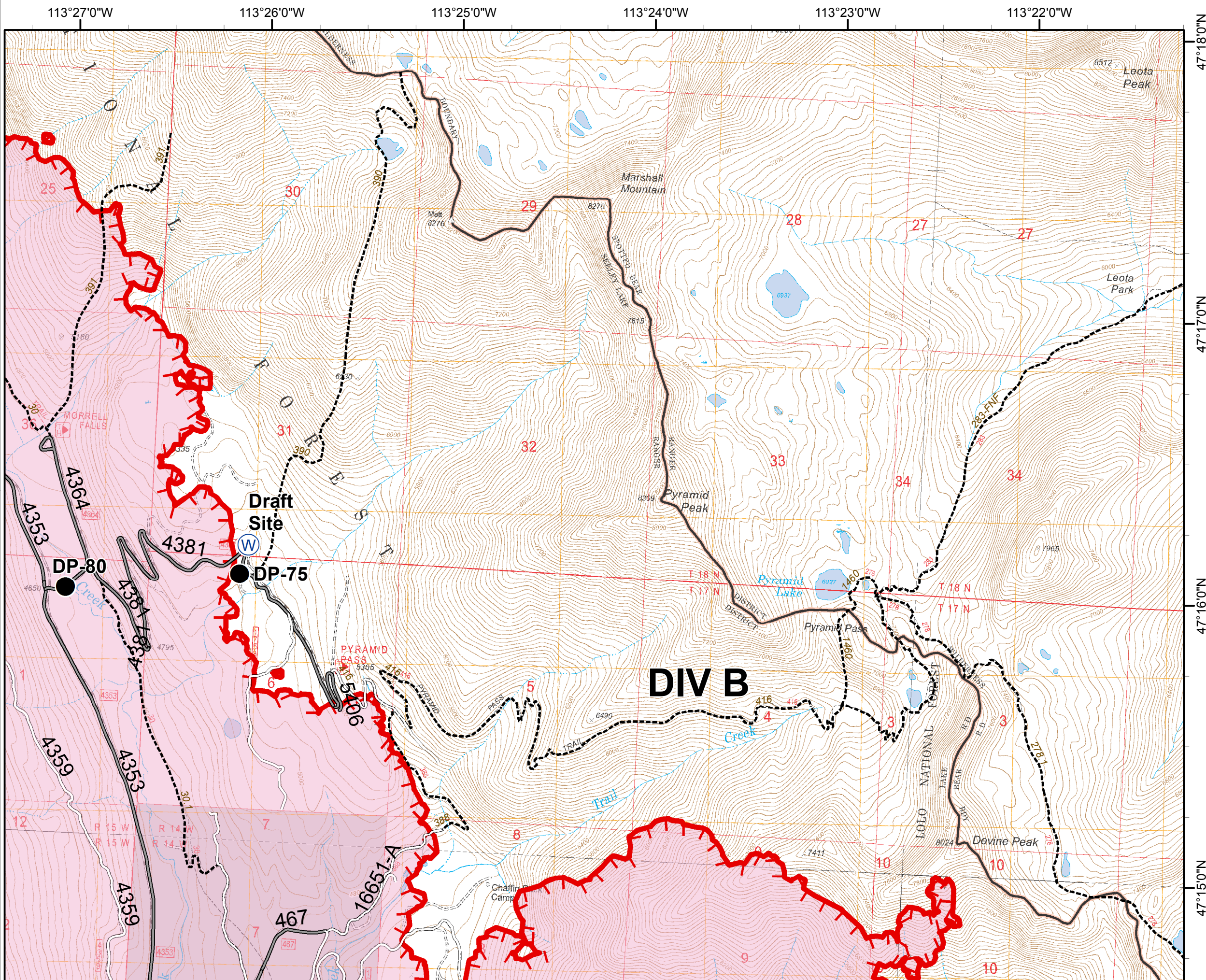
MT-LNF-001464

OPS DIV Map

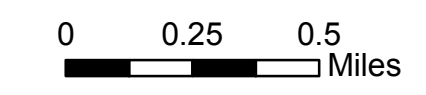
August 22, 2017

16,117 Acres (IR Flight 8/21/17 @ 23:54)

**DIV B - North**



- Structures
- Drop Point
- Water Source
- Uncontrolled Fire Edge
- Fire Area



# Rice Ridge Fire

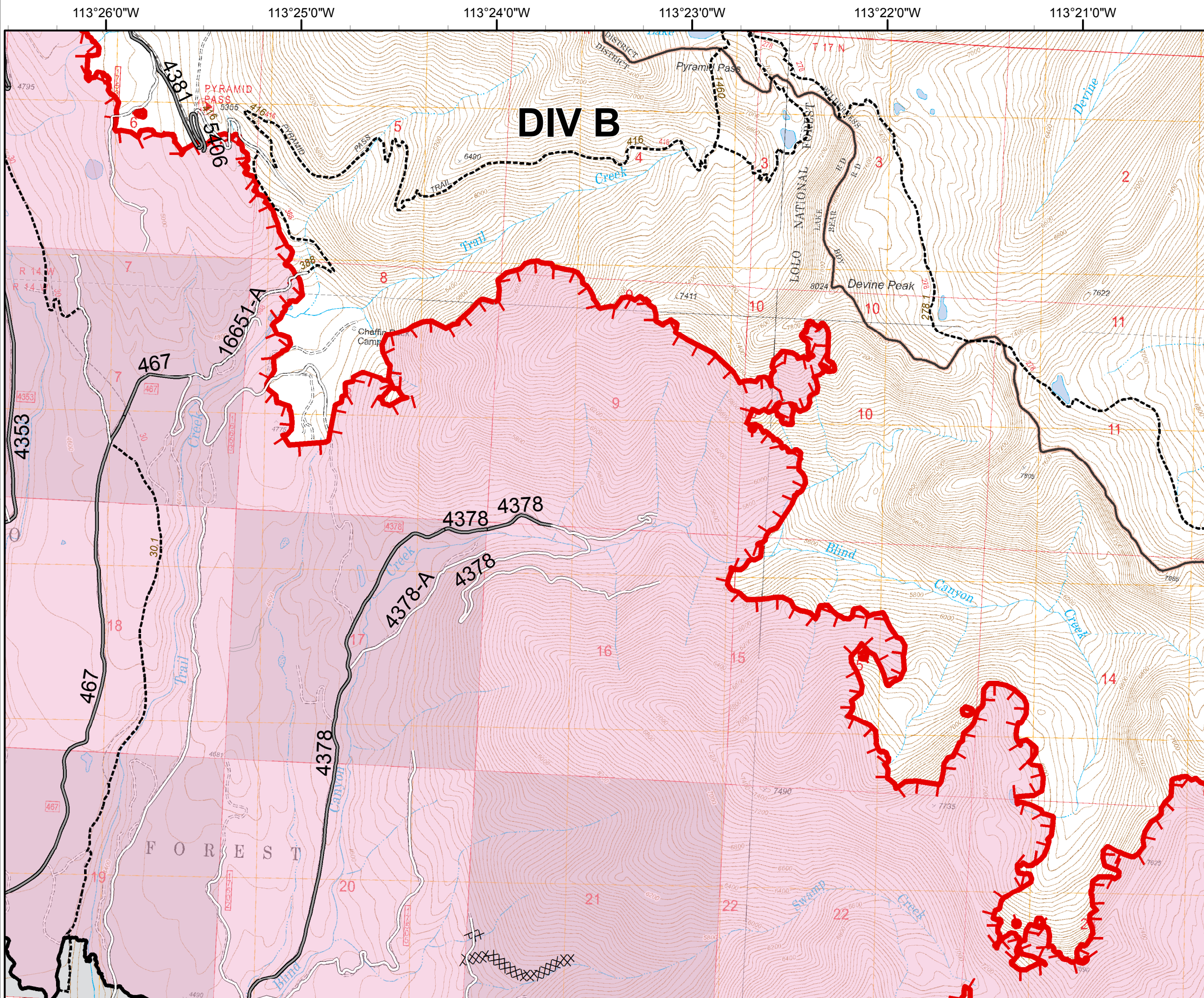
MT-LNF-001464

OPS DIV Map

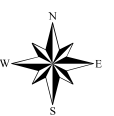
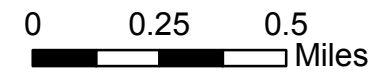
August 22, 2017

16,117 Acres (IR Flight 8/21/17 @ 23:54)

## DIV B - South



- Structures
- ▬ Uncontrolled Fire Edge
- XXXXXX Completed Dozer Line
- Completed Line
- Fire Area



113°30'0"W 113°29'0"W 113°28'0"W 113°27'0"W 113°26'0"W 113°25'0"W 113°24'0"W

# Rice Ridge Fire

MT-LNF-001464

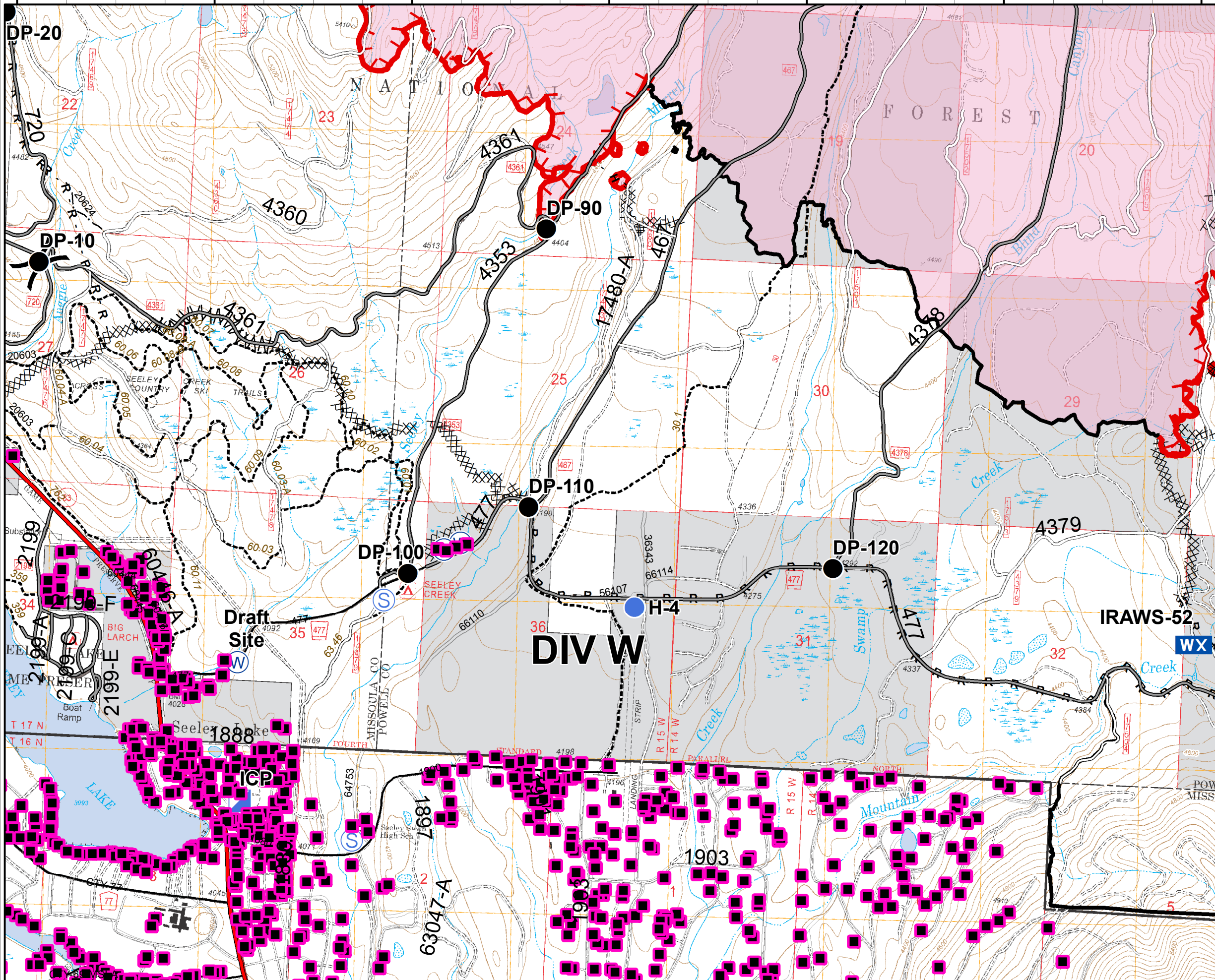
## OPS DIV Map

### August 22, 2017

16,117 Acres (IR Flight 8/21/17 @ 23:54)

## DIV W

47°13'0"N  
47°12'0"N  
47°11'0"N



- Division
  - Structures
  - Drop Point
  - Helispot
  - Incident Command Post
  - Mobile Weather Unit
  - Staging Area
  - Water Source
  - Road Closure (Need Div Sup Approval)
  - Uncontrolled Fire Edge
  - Completed Dozer Line
  - Completed Line
  - H - H - Hand Line
  - R - R - Road as Completed Line
  - Line Break Completed
  - Fire Area
- 0 0.25 0.5 Miles

# Rice Ridge Fire

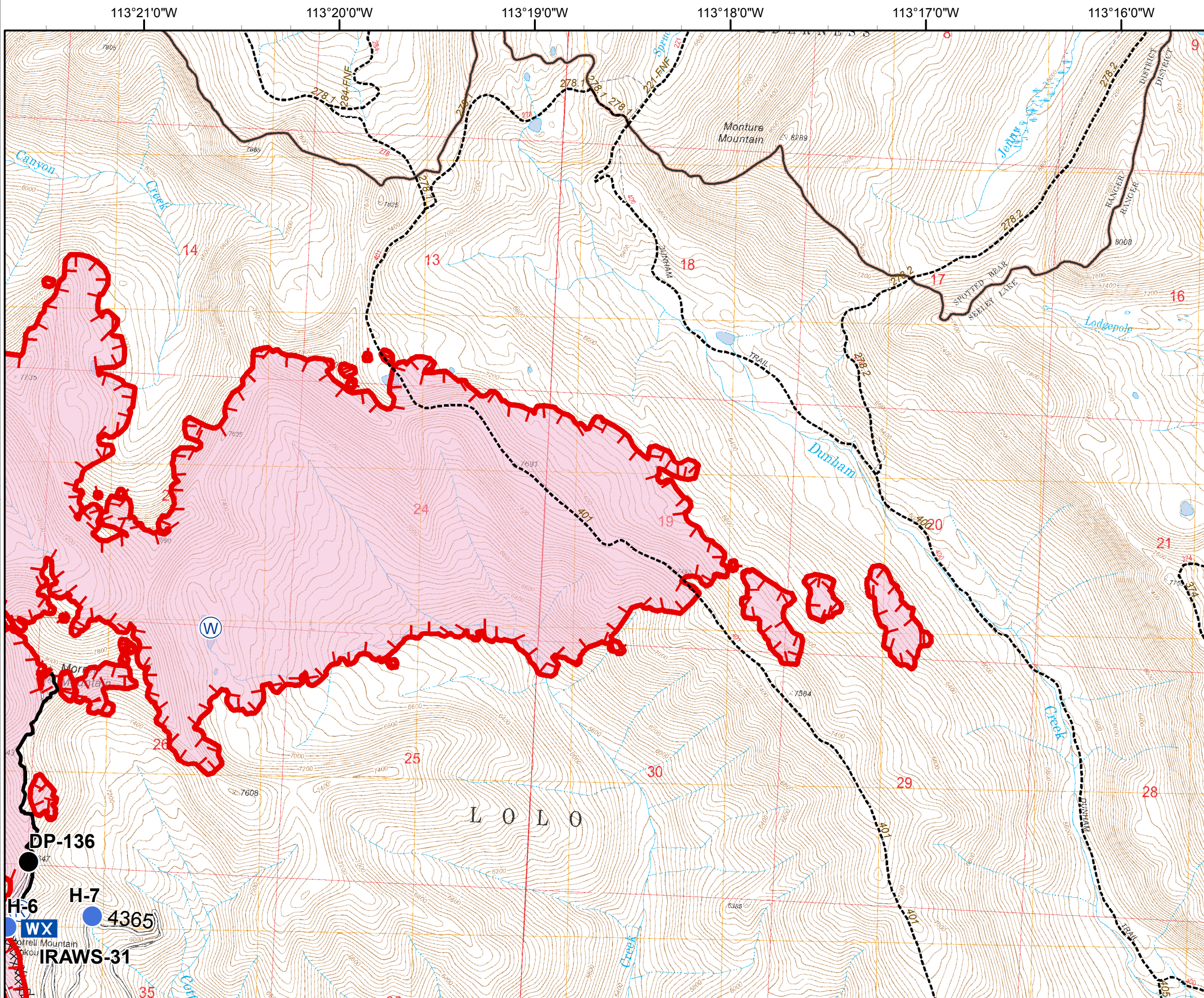
MT-LNF-001464

OPS DIV Map

August 22, 2017

16,117 Acres (IR Flight 8/21/17 @ 23:54)

DIV T - East



-  Structures
  -  Drop Point
  -  Helispot
  -  Mobile Weather Unit
  -  Repeater
  -  Water Source
  -  Uncontrolled Fire Edge
  -  Completed Dozer Line
  -  Completed Line
  -  Fire Area
- 0 0.25 0.5 Miles



# Rice Ridge Fire

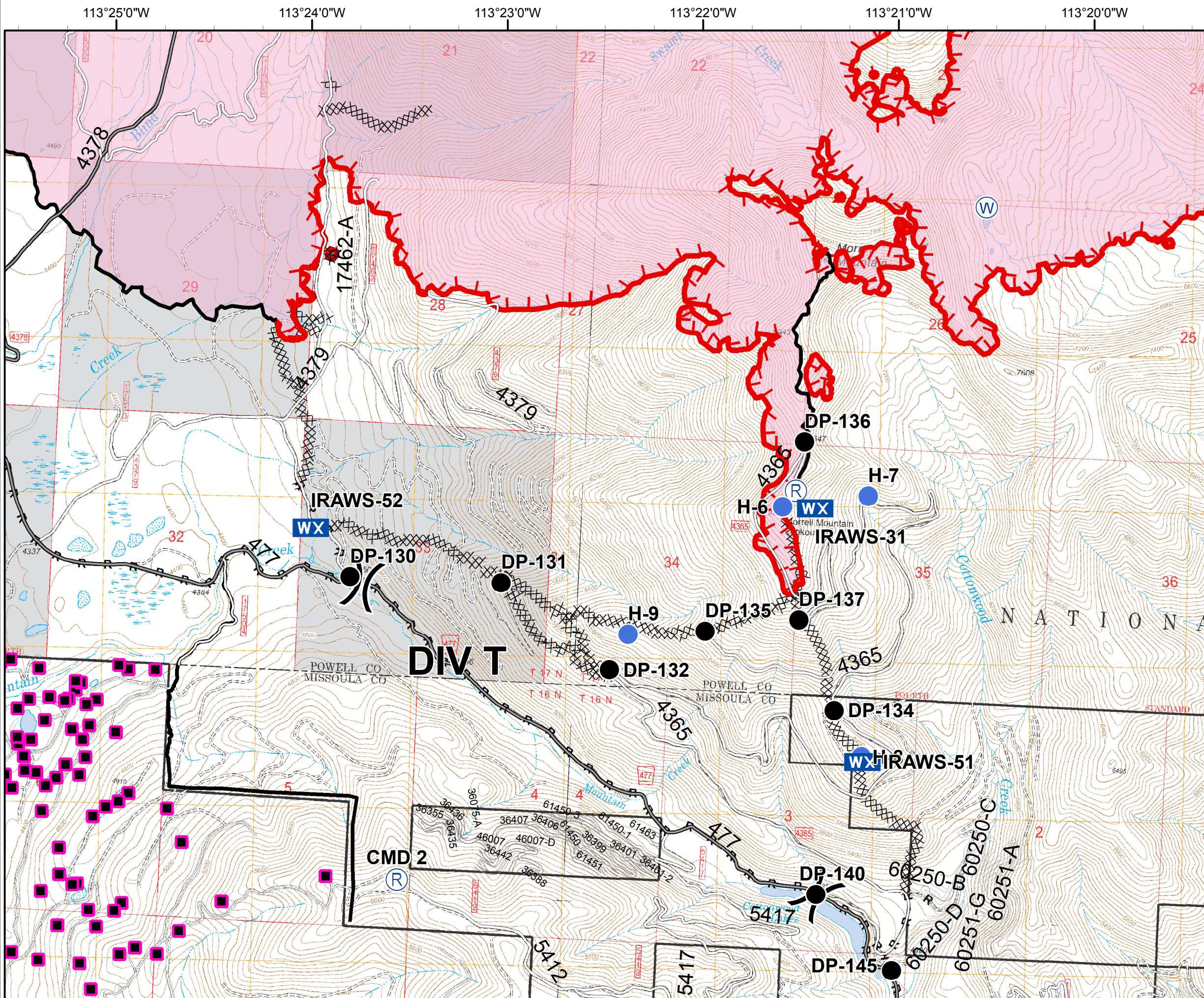
MT-LNF-001464











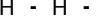



OPS DIV Map

August 22, 2017

16,117 Acres (IR Flight 8/21/17 @ 23:54)

DIV T - West



-  Division
  -  Structures
  -  Drop Point
  -  Helispot
  -  Mobile Weather Unit
  -  Repeater
  -  Water Source
  -  Uncontrolled Fire Edge
  -  Completed Dozer Line
  -  Completed Line
  -  Hand Line
  -  Road as Completed Line
  -  Fire Area
- 0 0.25 0.5 Miles
- 



# Rice Ridge Fire

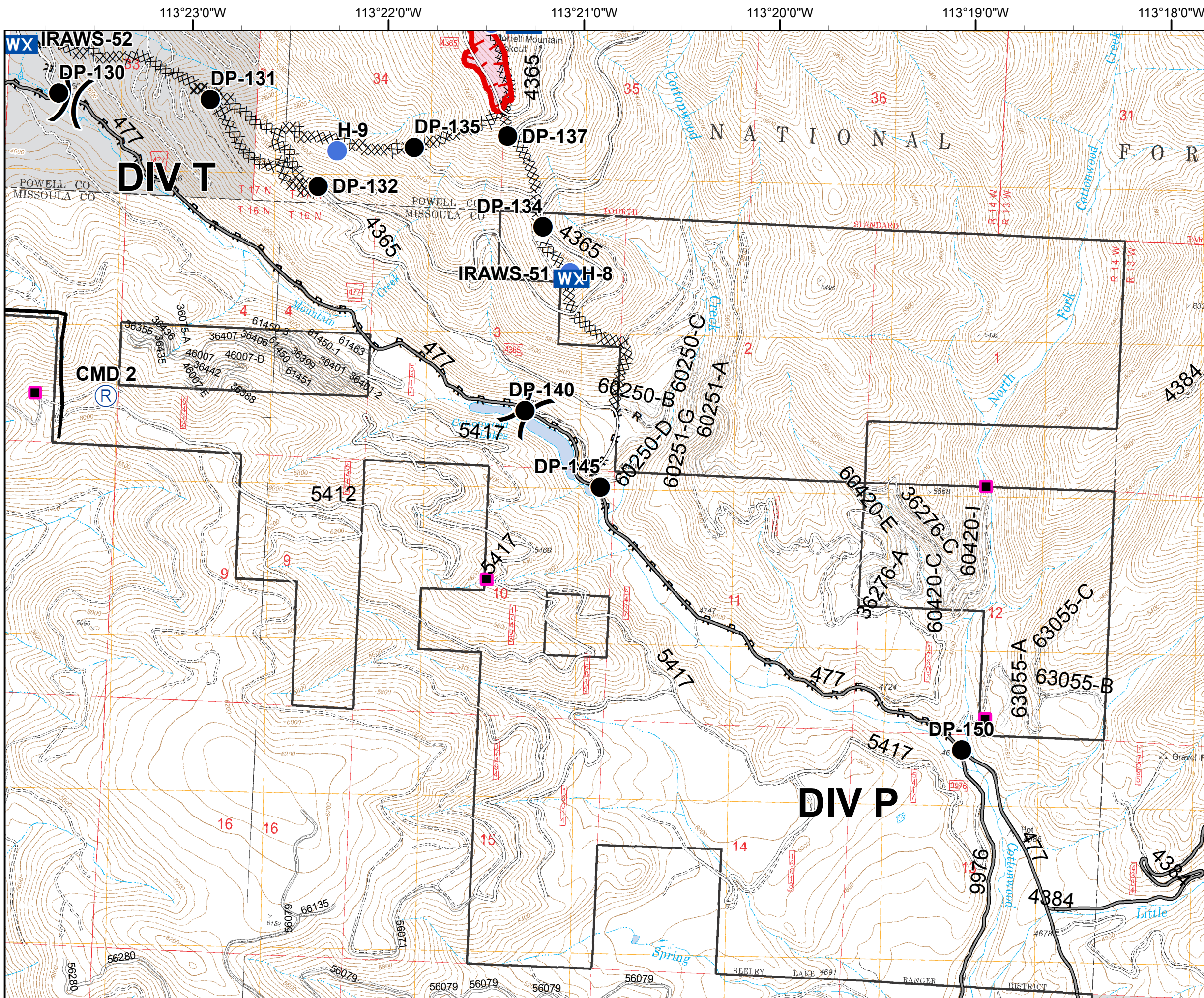
MT-LNF-001464

OPS DIV Map

August 22, 2017

16,117 Acres (IR Flight 8/21/17 @ 23:54)

**DIV P - West**



- Division
  - Structures
  - Drop Point
  - Helispot
  - Mobile Weather Unit
  - Repeater
  - Uncontrolled Fire Edge
  - Completed Dozer Line
  - Completed Line
  - H - H - Hand Line
  - R - R - Road as Completed Line
  - Fire Area
- 0 0.25 0.5 Miles



# Rice Ridge Fire

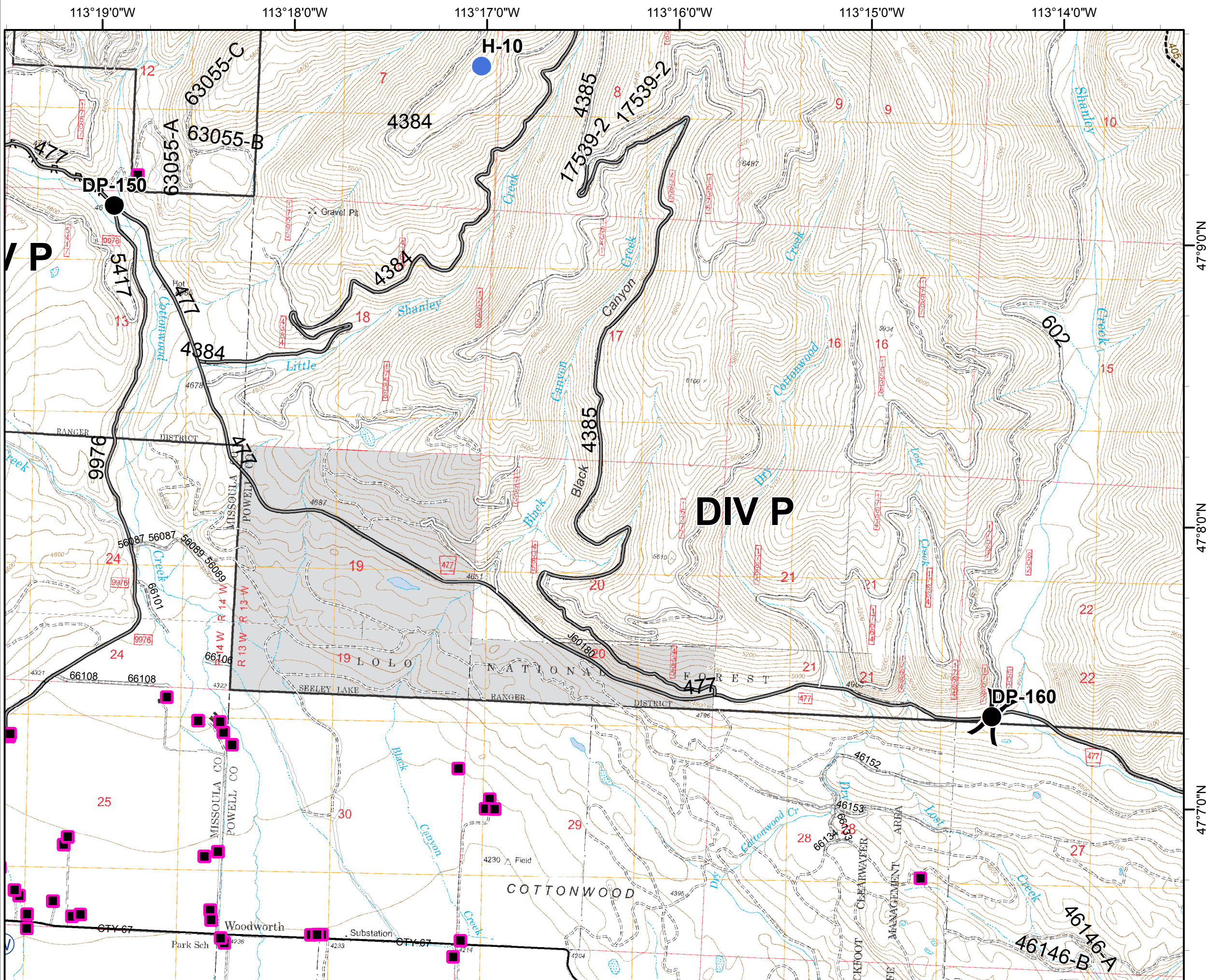
MT-LNF-001464

OPS DIV Map

August 22, 2017

16,117 Acres (IR Flight 8/21/17 @ 23:54)

**DIV P - East**



( ) Division

■ Structures

● Drop Point

● Helispot

⊙ Water Source

R - R - Road as Completed Line

0 0.25 0.5 Miles

