

# Rice Ridge Fire

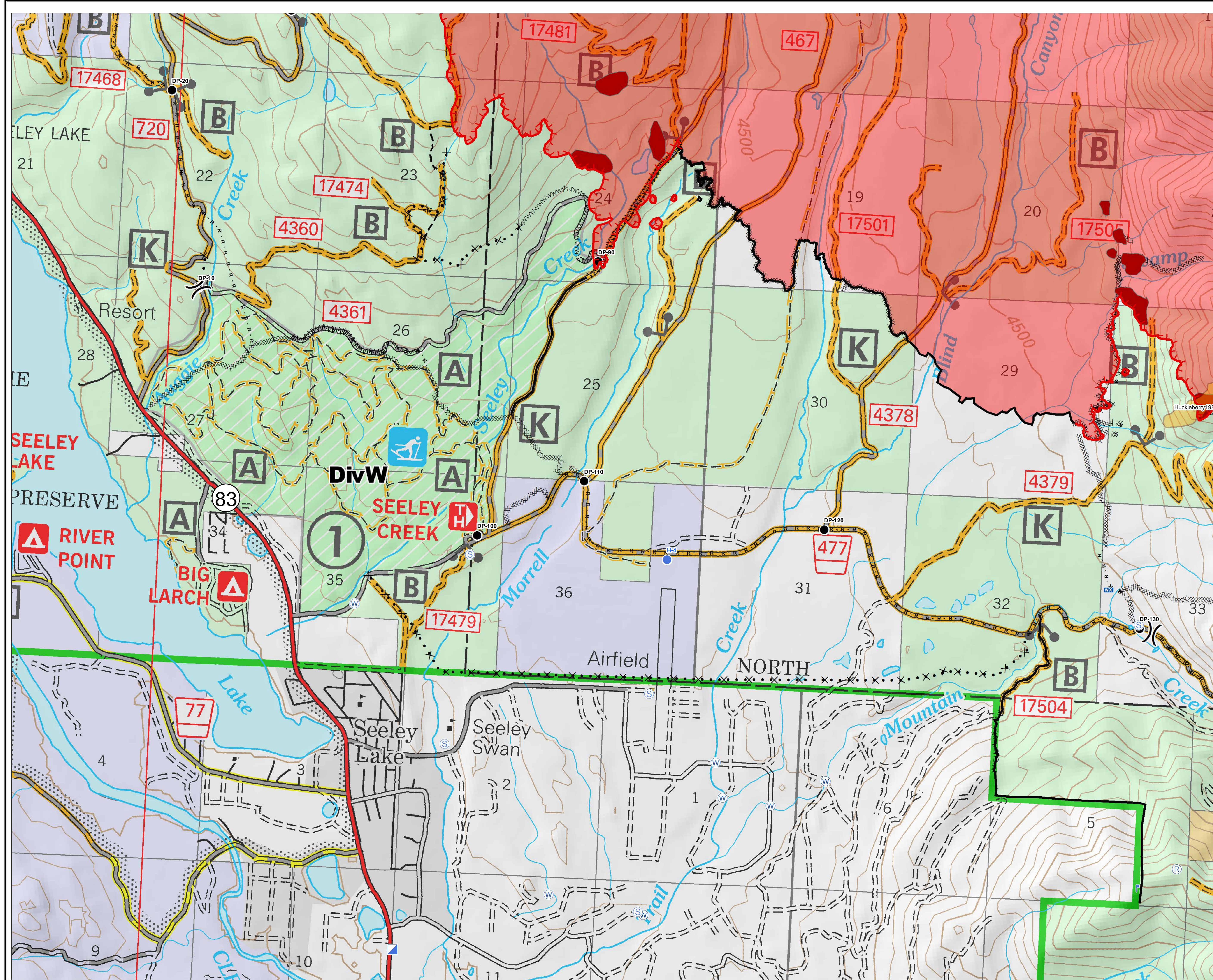
MT-LNF-001464

DIV W

Operations Map

August 24, 2017

16,650 Acres (IR Flight 8/23/17)



- ( ) Division Break
- Ⓡ Repeater
- Drop Point
- Helispot
- ▣ Incident Command Post
- ⌚ Lookout
- Ⓜ Mobile Weather Unit
- Ⓢ Staging Area
- Ⓦ Water Source
- Completed Line
- Uncontrolled Fire Edge
- - - Completed Hand Line
- R - R - R Road as Completed Line
- MMMM Line Break Completed
- XXXXX Completed Dozer Line
- X · X Proposed Dozer Line
- ~~~~~ Fire Break Planned or Incomplete
- - - Planned Fire Line
- Highlighted Manmade Feature
- Fire Perimeter
- Fire History
- IR\_IntenseHeat

