

# Rice Ridge Fire

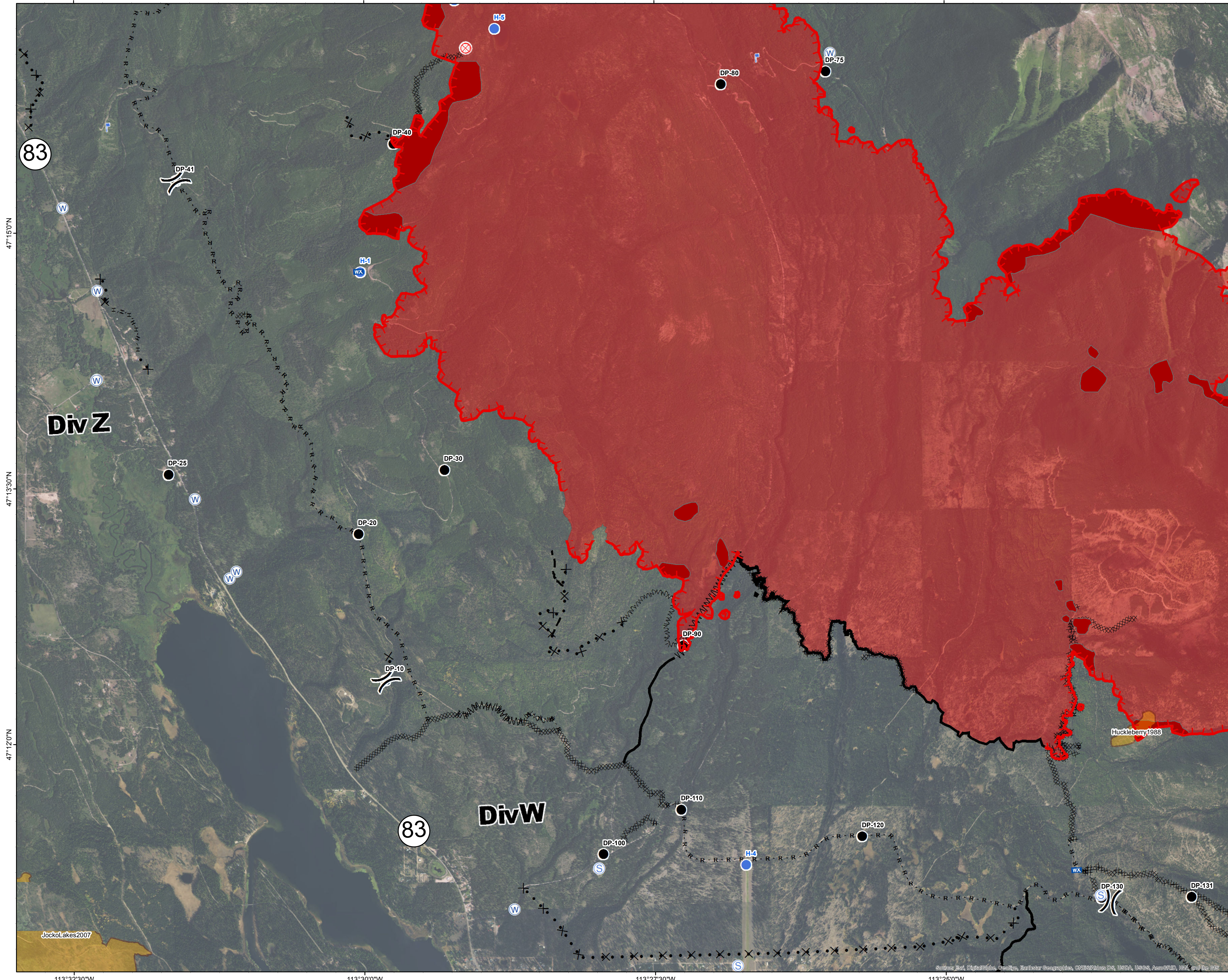
MT-LNF-001464

DIV W/Z  
Operations Map

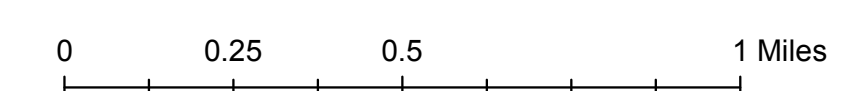
August 24, 2017

16,650 Acres (IR Flight 8/23/17)

- Completed Line
- Uncontrolled Fire Edge
- Fire History
- IR\_IntenseHeat
- ) Division Break
- Drop Point
- ⊗ Fire Origin
- Helispot
- ⌘ Lookout
- Ⓜ Mobile Weather Unit
- Ⓢ Staging Area
- Ⓜ Water Source
- Completed Hand Line
- Road as Completed Line
- Line Break Completed
- Completed Dozer Line
- ⊗ Proposed Dozer Line
- Fire Break Planned or Incomplete
- Planned Fire Line
- Highlighted Manmade Feature
- Fire Perimeter



Northern Rockies  
Incident Management  
Team



JockoLakes2007

Source: Esri, DigitalGlobe, GeoEye, Earthstar Geographics, CNES/Airbus DS, USDA, USGS, AeroGRID, IGN, and the GIS