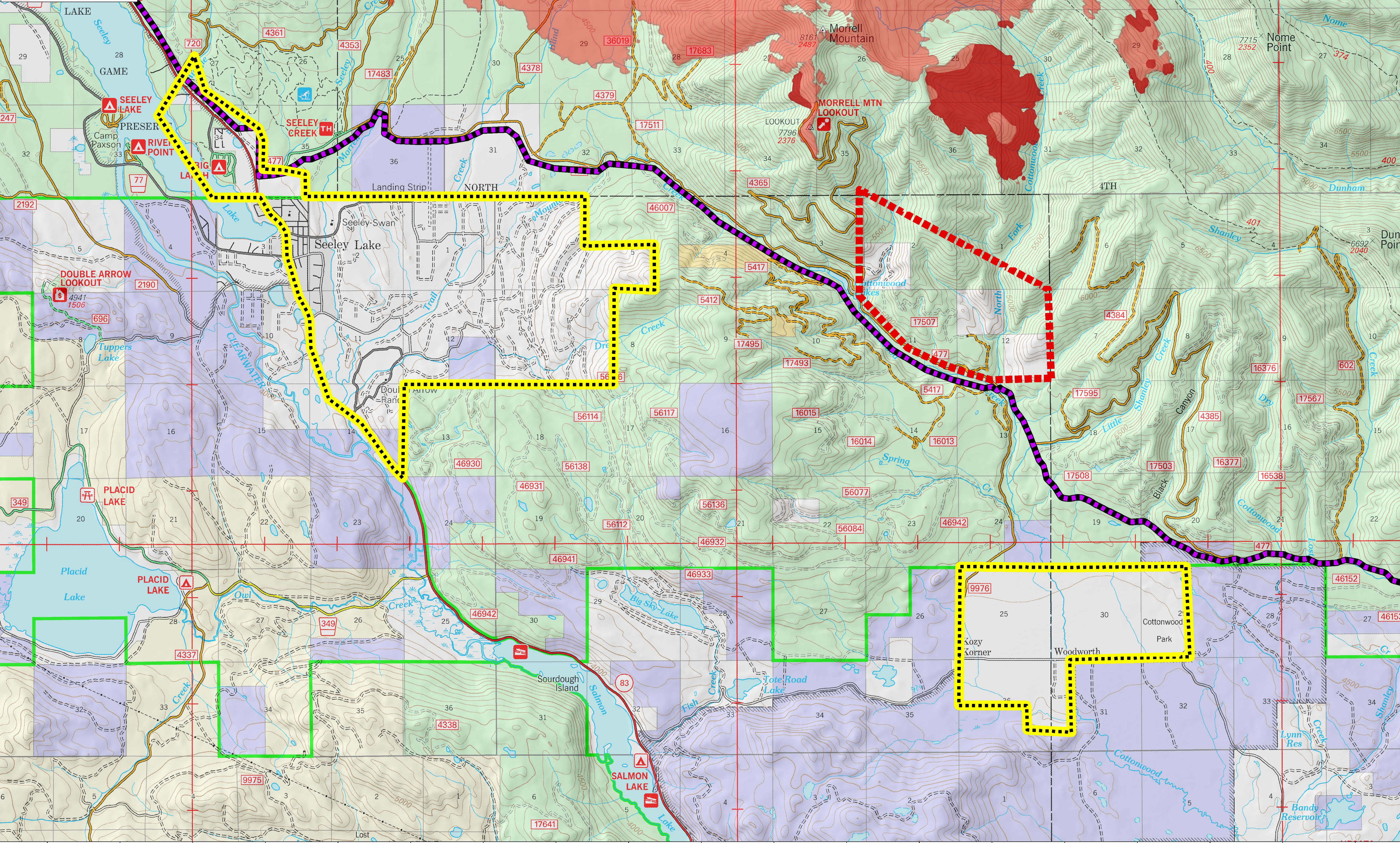


113°32'0"W 113°28'0"W 113°24'0"W 113°20'0"W 113°16'0"W

**Public Information Map**  
**RICE RIDGE FIRE**  
MT-LNF-001464  
August 24, 2017  
17,794 Acres (IR Flight 8/24/17)



- CLOSED Trails 08/11/2017
- Closure Area 08/19/2017
- Evacuation
- Warning
- IR\_IntenseHeat
- Fire Perimeter



113°32'0"W 113°28'0"W 113°24'0"W 113°20'0"W 113°16'0"W

47°12'0"N

47°8'0"N

47°12'0"N

47°8'0"N