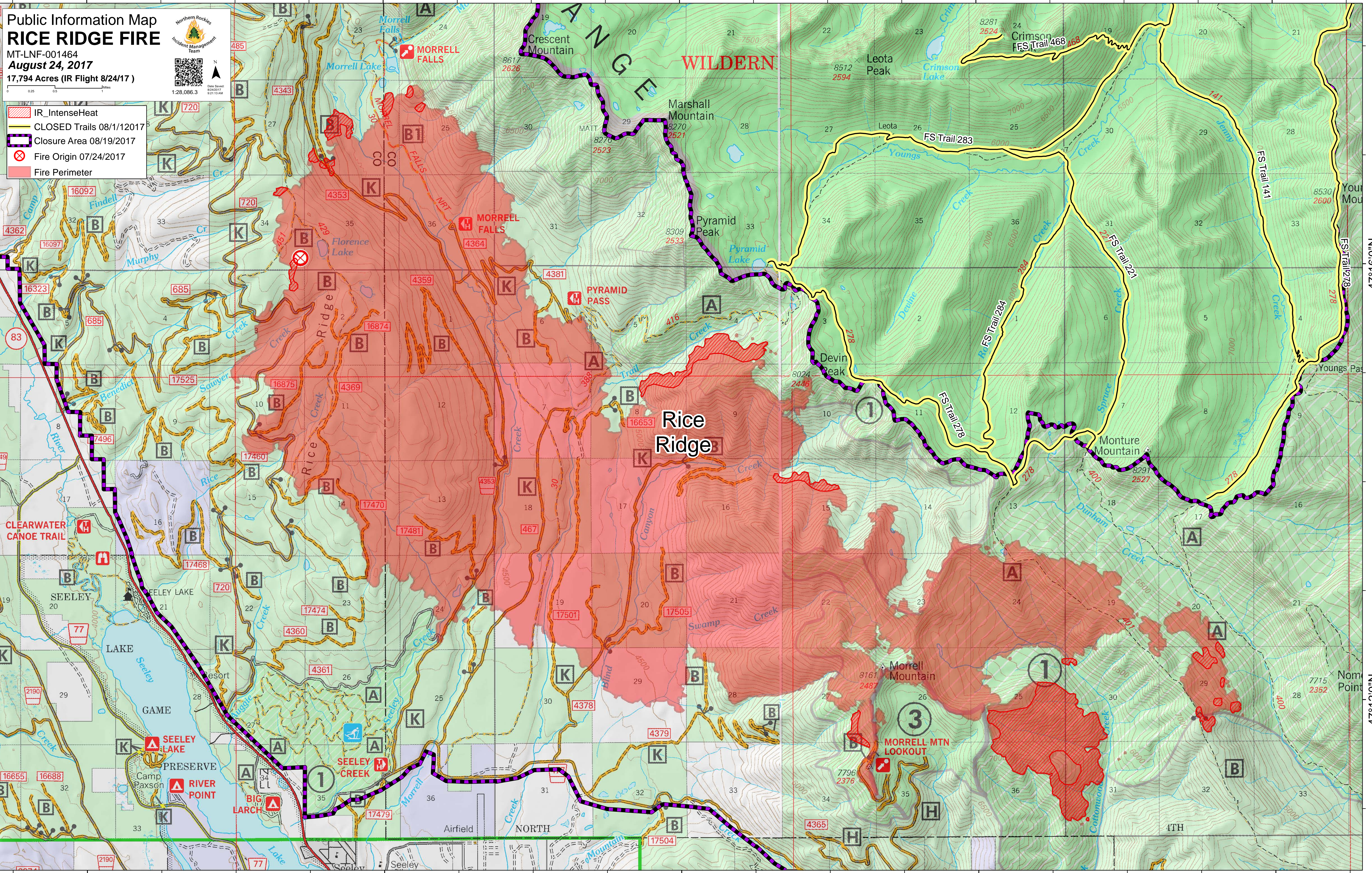


# Public Information Map RICE RIDGE FIRE

MT-LNF-001464  
August 24, 2017  
17,794 Acres (IR Flight 8/24/17)



- IR\_IntenseHeat
- CLOSED Trails 08/1/2017
- Closure Area 08/19/2017
- Fire Origin 07/24/2017
- Fire Perimeter



113°32'0"W 113°28'0"W 113°24'0"W 113°20'0"W 113°16'0"W

47°16'0"N  
47°12'0"N

47°16'0"N  
47°12'0"N