

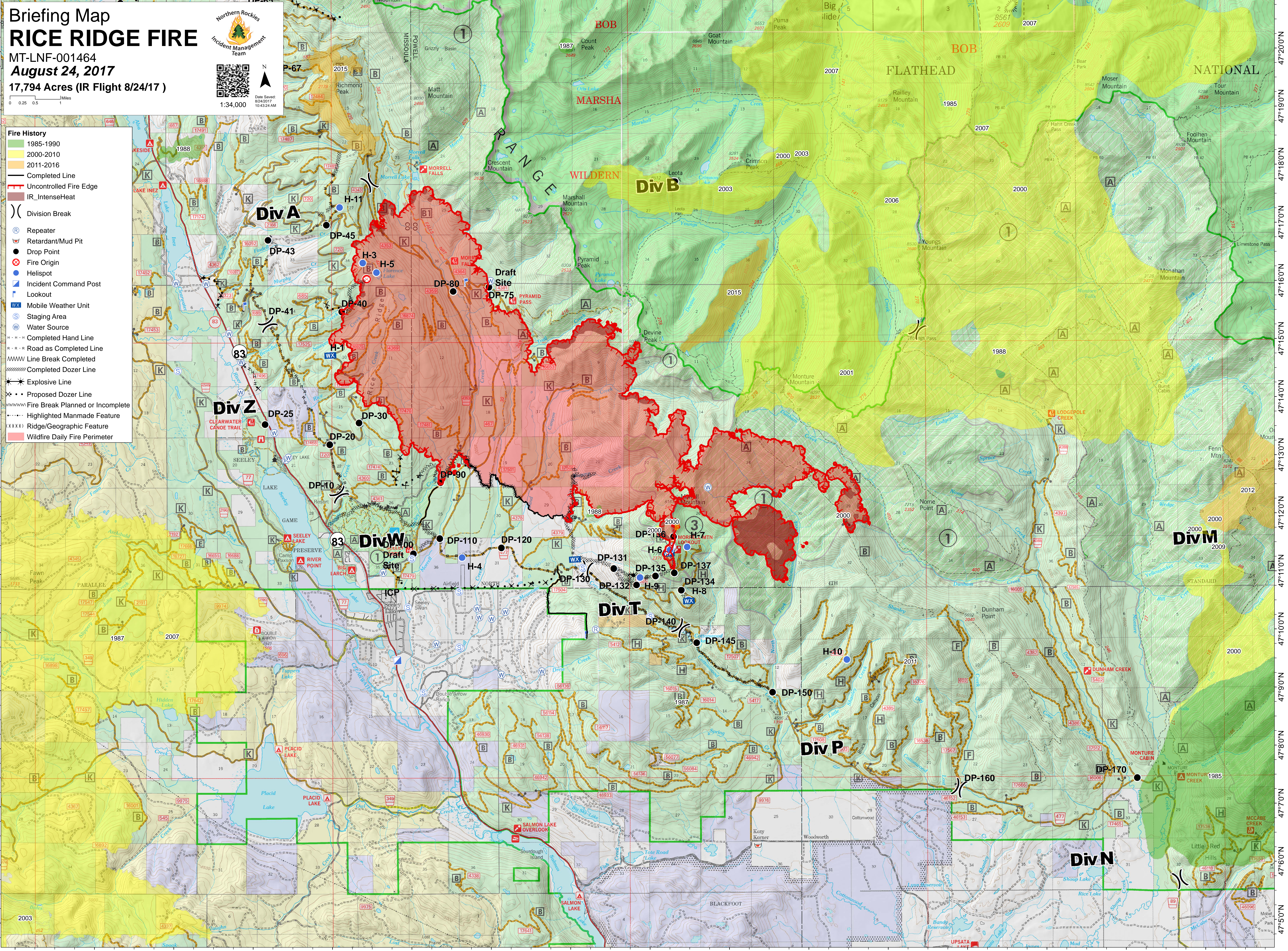
Briefing Map

RICE RIDGE FIRE

MT-LNF-001464
August 24, 2017
 17,794 Acres (IR Flight 8/24/17)



- Fire History**
- 1985-1990
 - 2000-2010
 - 2011-2016
- Line Styles**
- Completed Line
 - Uncontrolled Fire Edge
 - IR_IntenseHeat
 - Division Break
- Other Symbols**
- Repeater
 - Retardant/Mud Pit
 - Drop Point
 - Fire Origin
 - Helispot
 - Incident Command Post
 - Lookout
 - Mobile Weather Unit
 - Staging Area
 - Water Source
 - Completed Hand Line
 - Road as Completed Line
 - Line Break Completed
 - Completed Dozer Line
 - Explosive Line
 - Proposed Dozer Line
 - Fire Break Planned or Incomplete
 - Highlighted Manmade Feature
 - Ridge/Geographic Feature
 - Wildfire Daily Fire Perimeter



113°38'0"W 113°36'0"W 113°34'0"W 113°32'0"W 113°30'0"W 113°28'0"W 113°26'0"W 113°24'0"W 113°22'0"W 113°20'0"W 113°18'0"W 113°16'0"W 113°14'0"W 113°12'0"W 113°10'0"W 113°8'0"W