

113°37'0"W

113°35'0"W

113°33'0"W

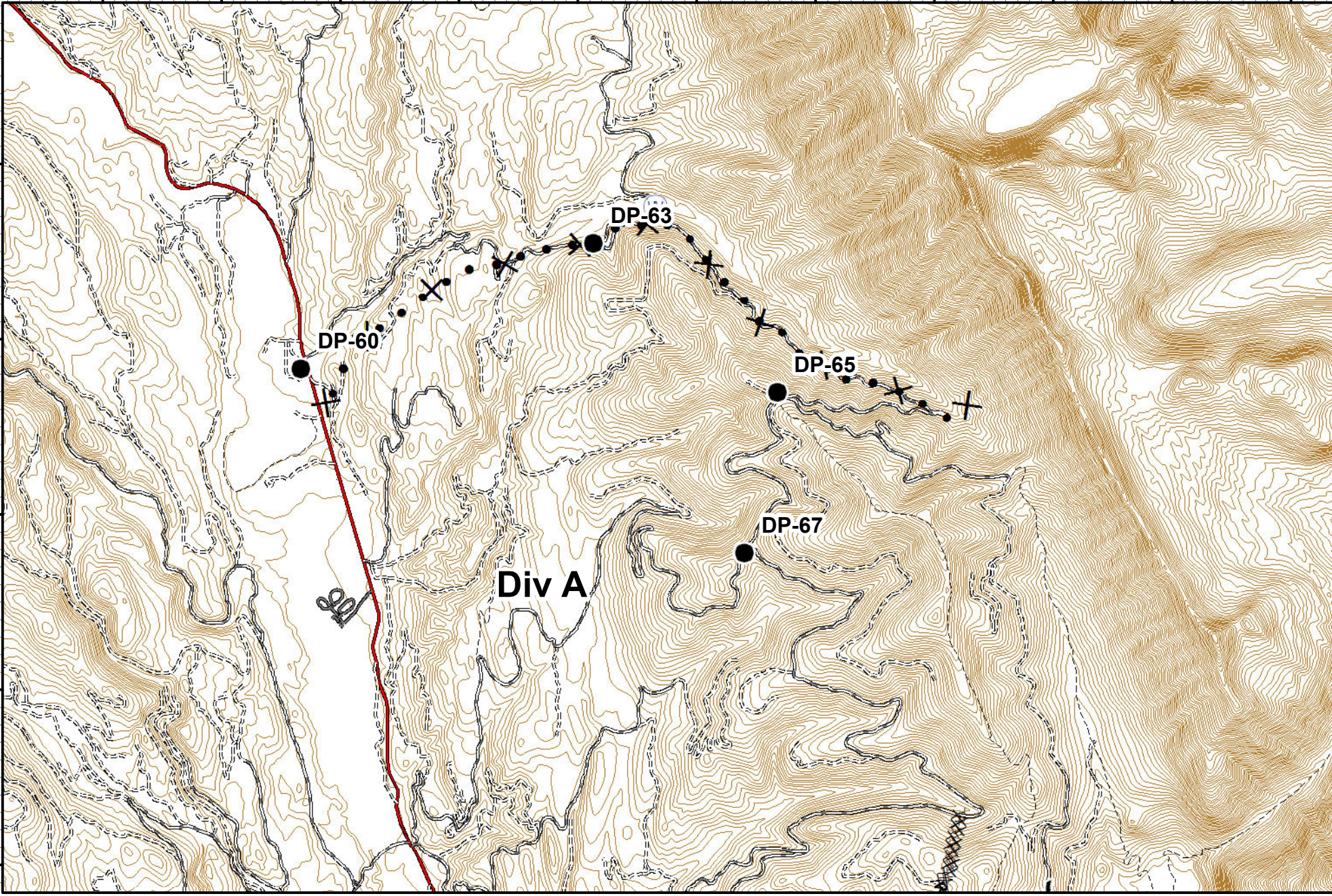
113°31'0"W

113°29'0"W

113°27'0"W

47°22'0"N
47°21'0"N
47°20'0"N
47°19'0"N
47°18'0"N

47°22'0"N
47°21'0"N
47°20'0"N
47°19'0"N
47°18'0"N

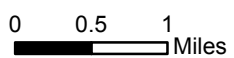


Rice Ridge Fire Incident Action Plan

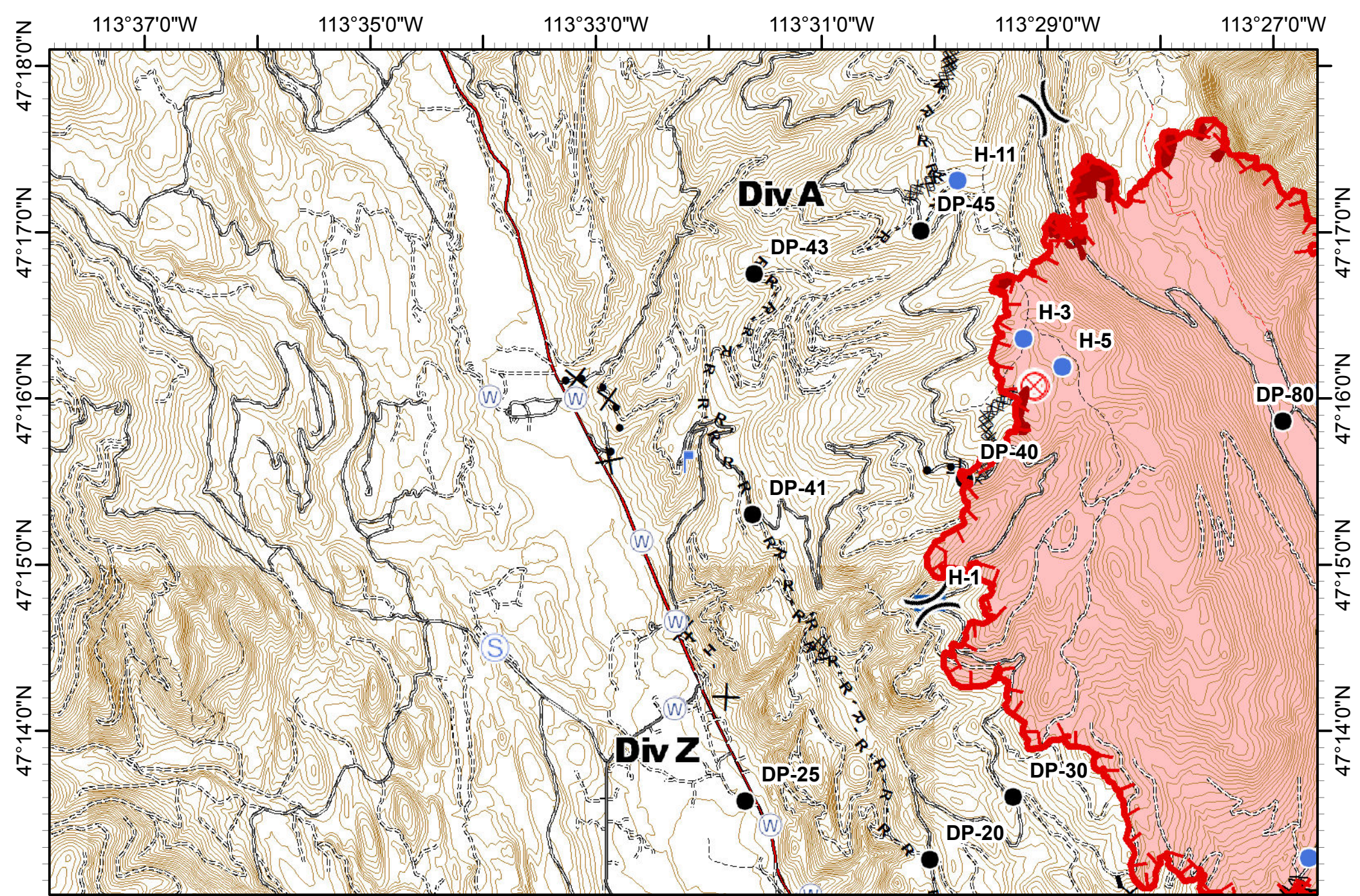


MT-LNF-001464
08/25/2017
Approx Acres 17,794

MAP 1



- Drop Point
- Water Source
- Completed Dozer Line
- Road as Completed Line
- X
X
 Proposed Dozer Line

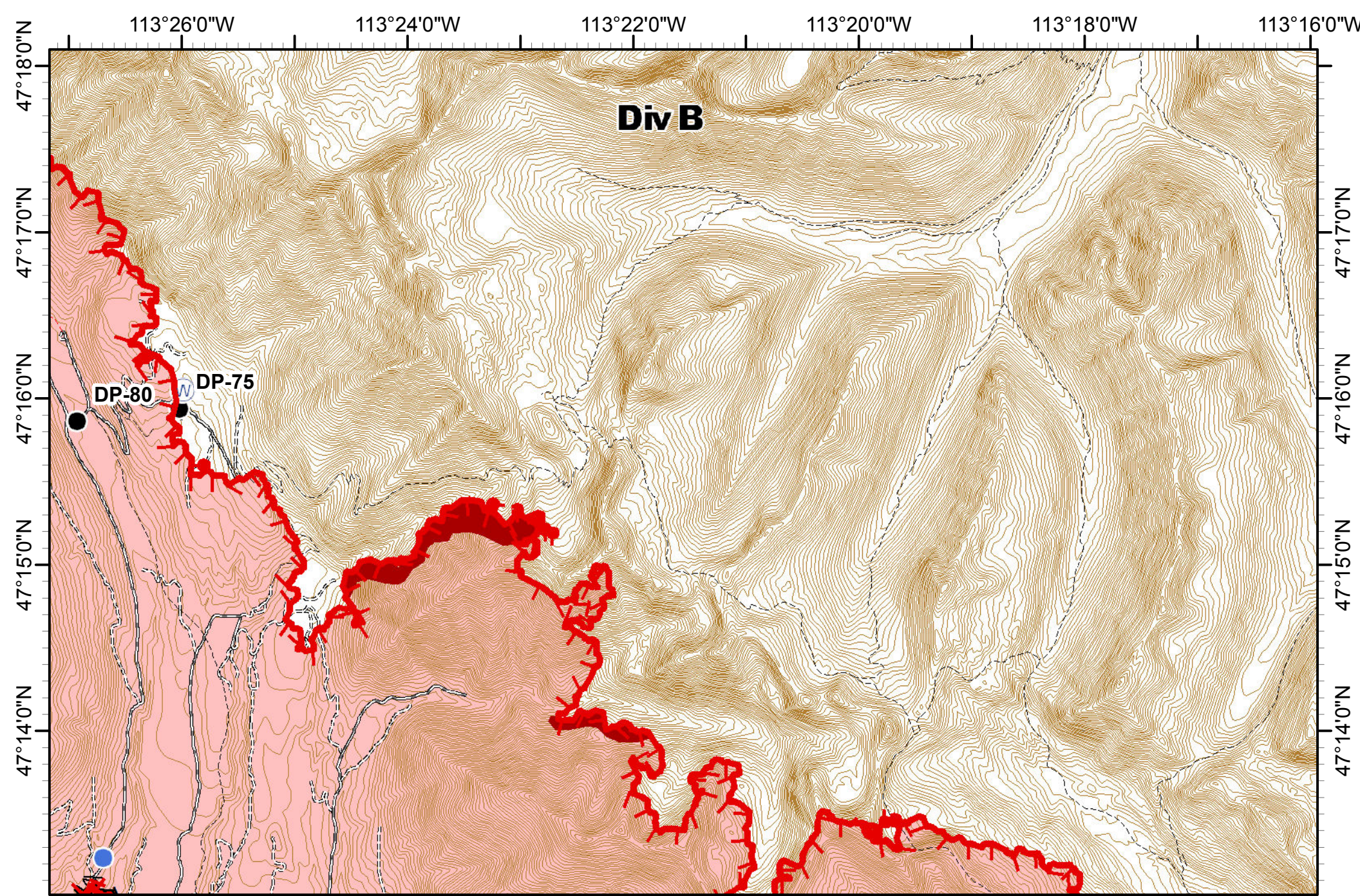


Rice Ridge Fire
Incident Action Plan
 MT-LNF-001464
 08/25/2017
 Approx Acres 17,794
MAP 2

0 0.5 1 Miles

Division Break	Fire Origin	Mobile Weather Unit	Completed Dozer Line	Road as Completed Line	Proposed Dozer Line
Drop Point	Helispot	Staging Area	Completed Hand Line	Line Break Completed	Planned Fire Line
Lookout	Water Source				Wildfire Daily Fire Perimeter





**Rice Ridge Fire
Incident Action Plan**

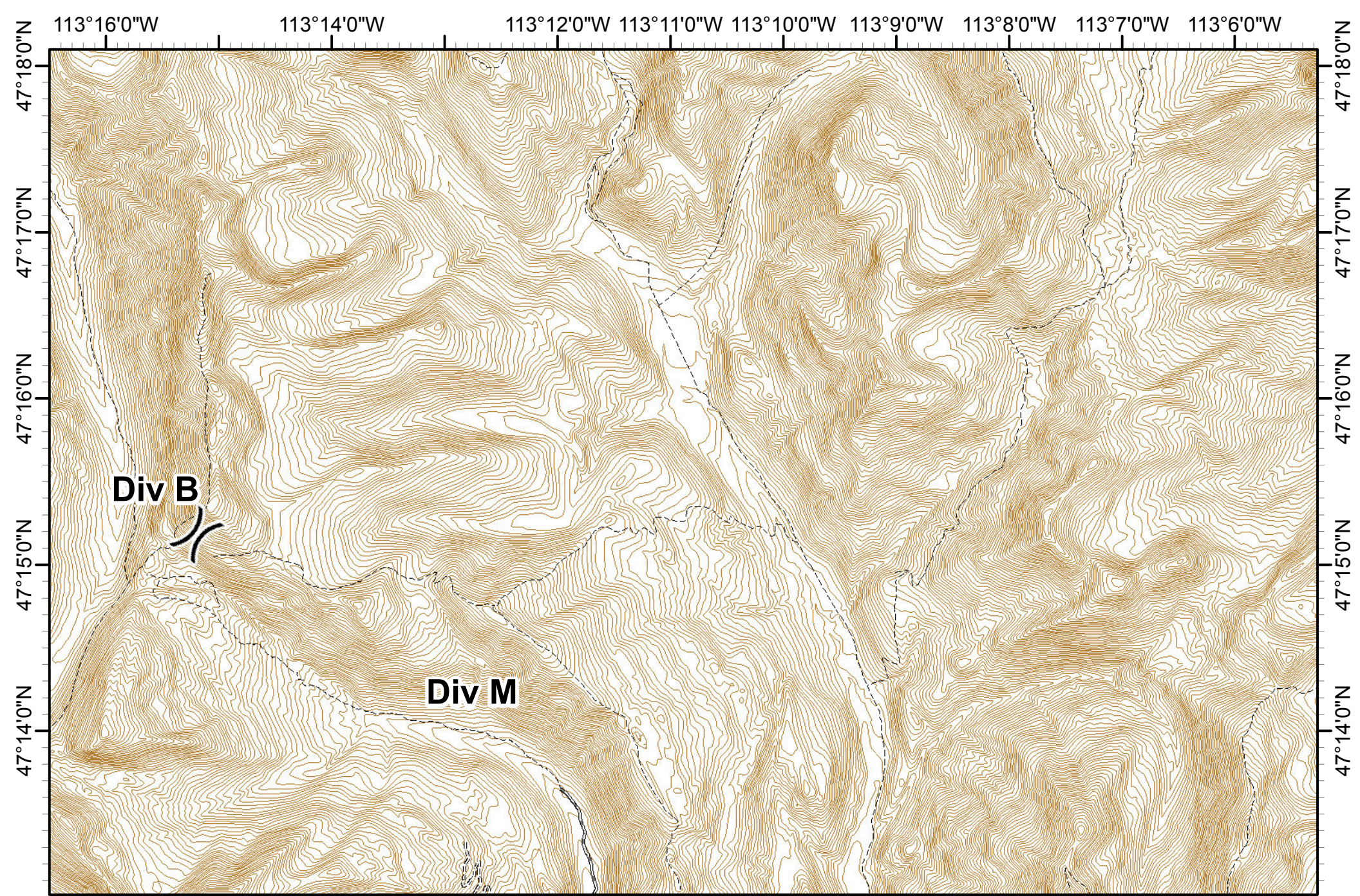


MT-LNF-001464
08/25/2017
Approx Acres 17,794

MAP 3

0 0.5 1 Miles

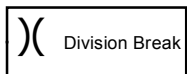
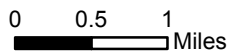
Drop Point	Lookout	Water Source	Completed Hand Line	Line Break Completed	Wildfire Daily Fire Perimeter
Helispot	IR_IntenseHeat				

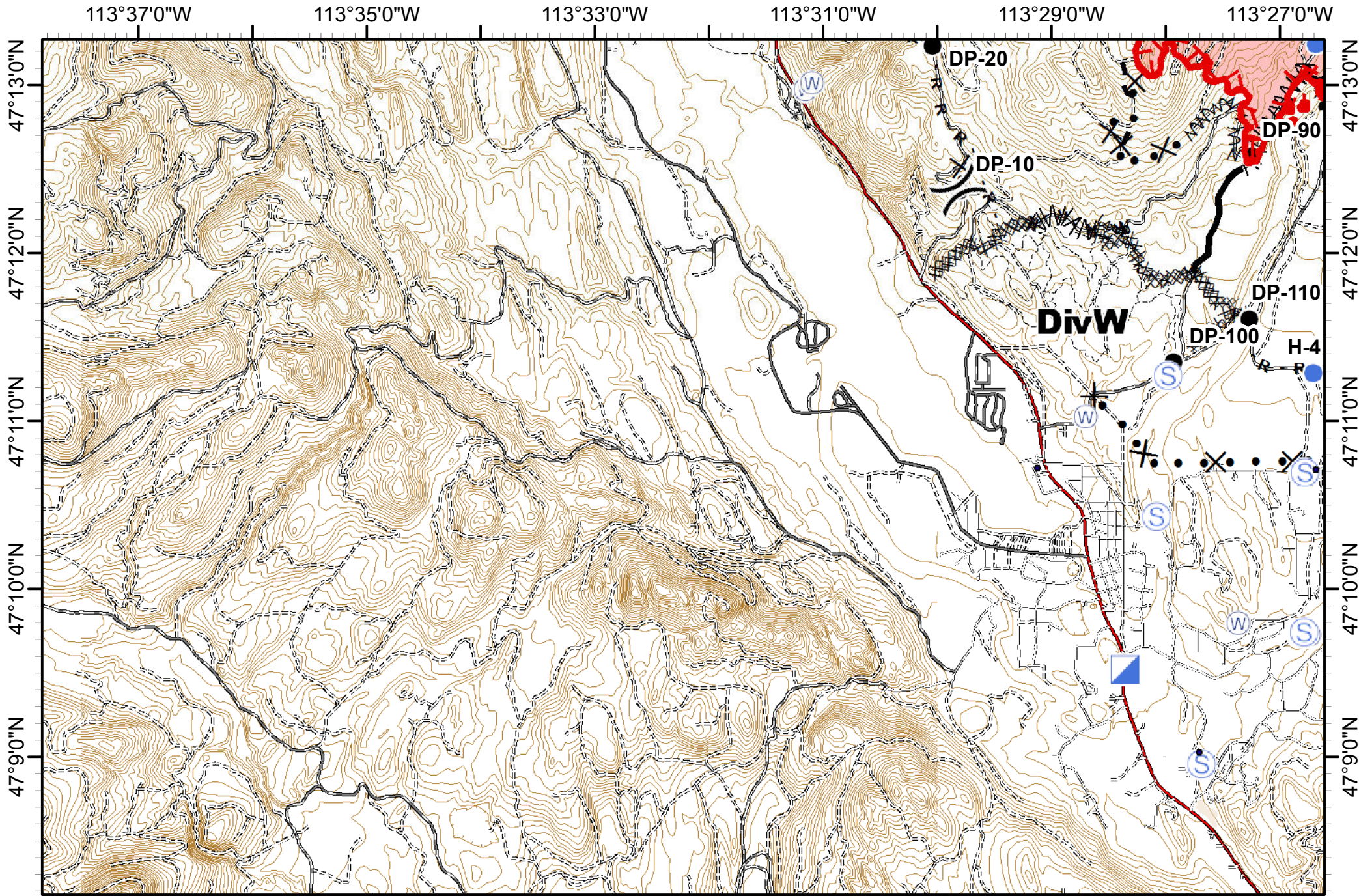


**Rice Ridge Fire
Incident Action Plan**



MT-LNF-001464 **MAP 4**
08/25/2017
Approx Acres 17,794





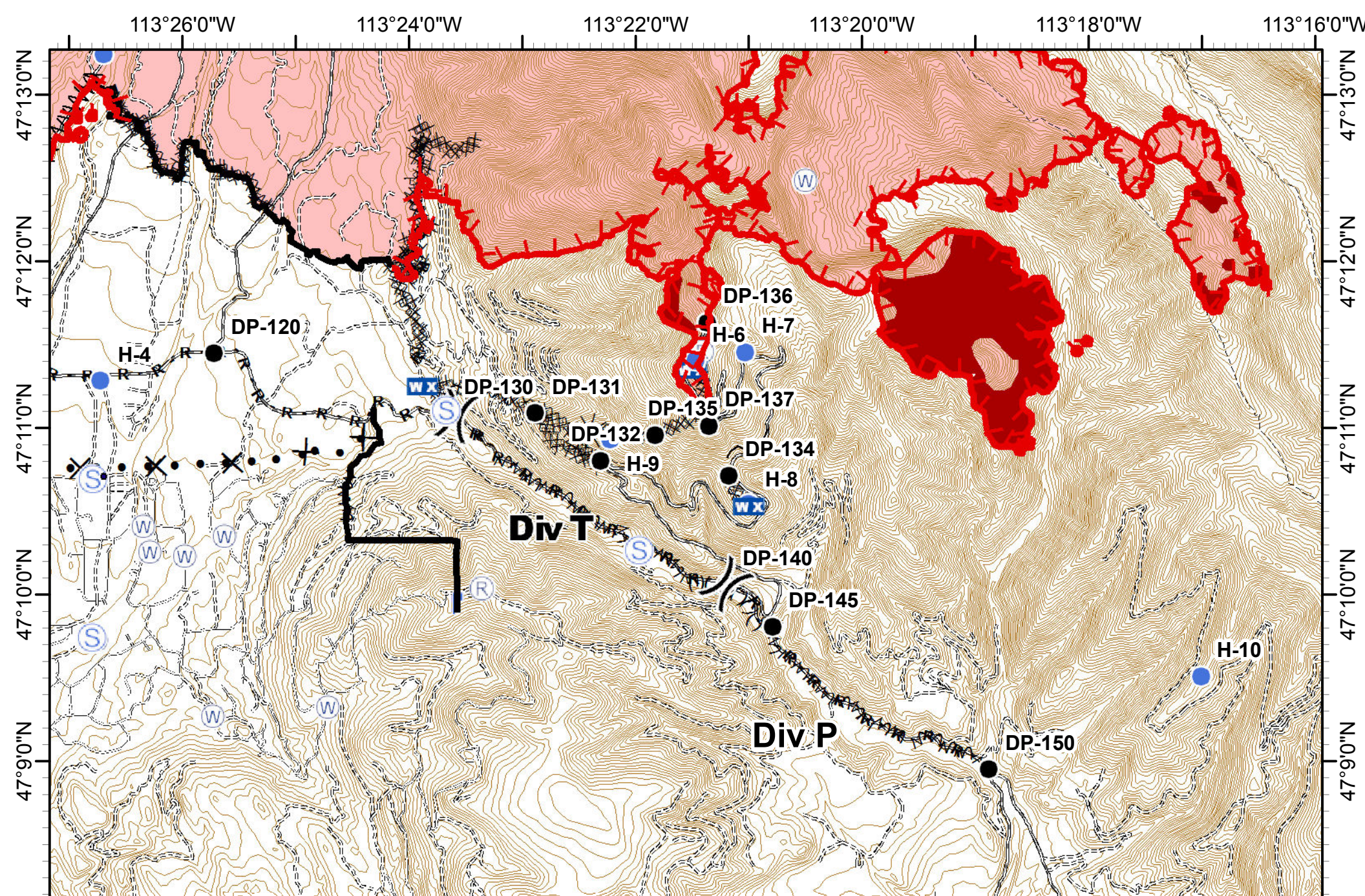
Rice Ridge Fire
Incident Action Plan

MT-LNF-001464
 08/25/2017
 Approx Acres 17,794

MAP 5

0 0.5 1 Miles

	Division Break		Helispot		Staging Area		Completed Dozer Line		R - Road as Completed Line		Proposed Dozer Line
	Drop Point		Incident Command Post		Water Source		Completed Hand Line		Line Break Completed		Fire Break Planned or Incomplete
											Planned Fire Line
											Wildfire Daily Fire Perimeter



Rice Ridge Fire Incident Action Plan

MT-LNF-001464
08/25/2017
Approx Acres 17,794

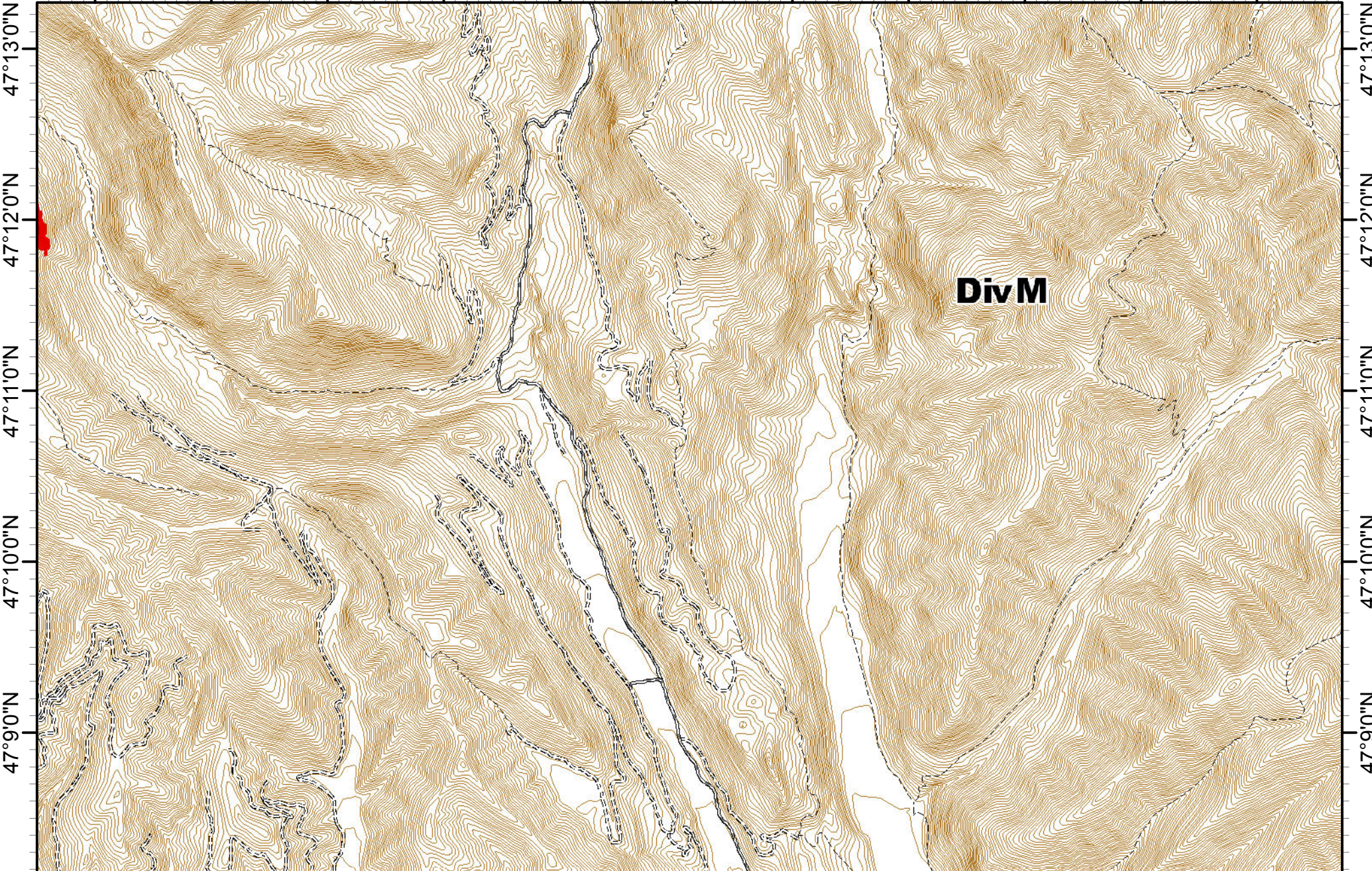
MAP 6

Northern Rockies Incident Management Team

0 0.5 1 Miles

	Division Break		Helispot		Staging Area		Completed Dozer Line		Line Break Completed		Fire Break Planned or Incomplete
	Repeater		Lookout		Water Source		Completed Hand Line		Explosive Line		Highlighted Manmade Feature
	Drop Point		Mobile Weather Unit		IR_IntenseHeat		Road as Completed Line		Proposed Dozer Line		Ridge/Geographic Feature
											Wildfire Daily Fire Perimeter

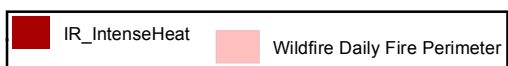
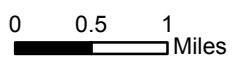
113°16'0"W 113°14'0"W 113°12'0"W 113°11'0"W 113°10'0"W 113°9'0"W 113°8'0"W 113°7'0"W 113°6'0"W



Rice Ridge Fire
Incident Action Plan



MT-LNF-001464
 08/25/2017
MAP 7
 Approx Acres 17,794



113°26'0"W

113°24'0"W

113°22'0"W

113°20'0"W

113°18'0"W

113°16'0"W

47°8'0"N

47°7'0"N

47°6'0"N

47°5'0"N

47°4'0"N

47°8'0"N

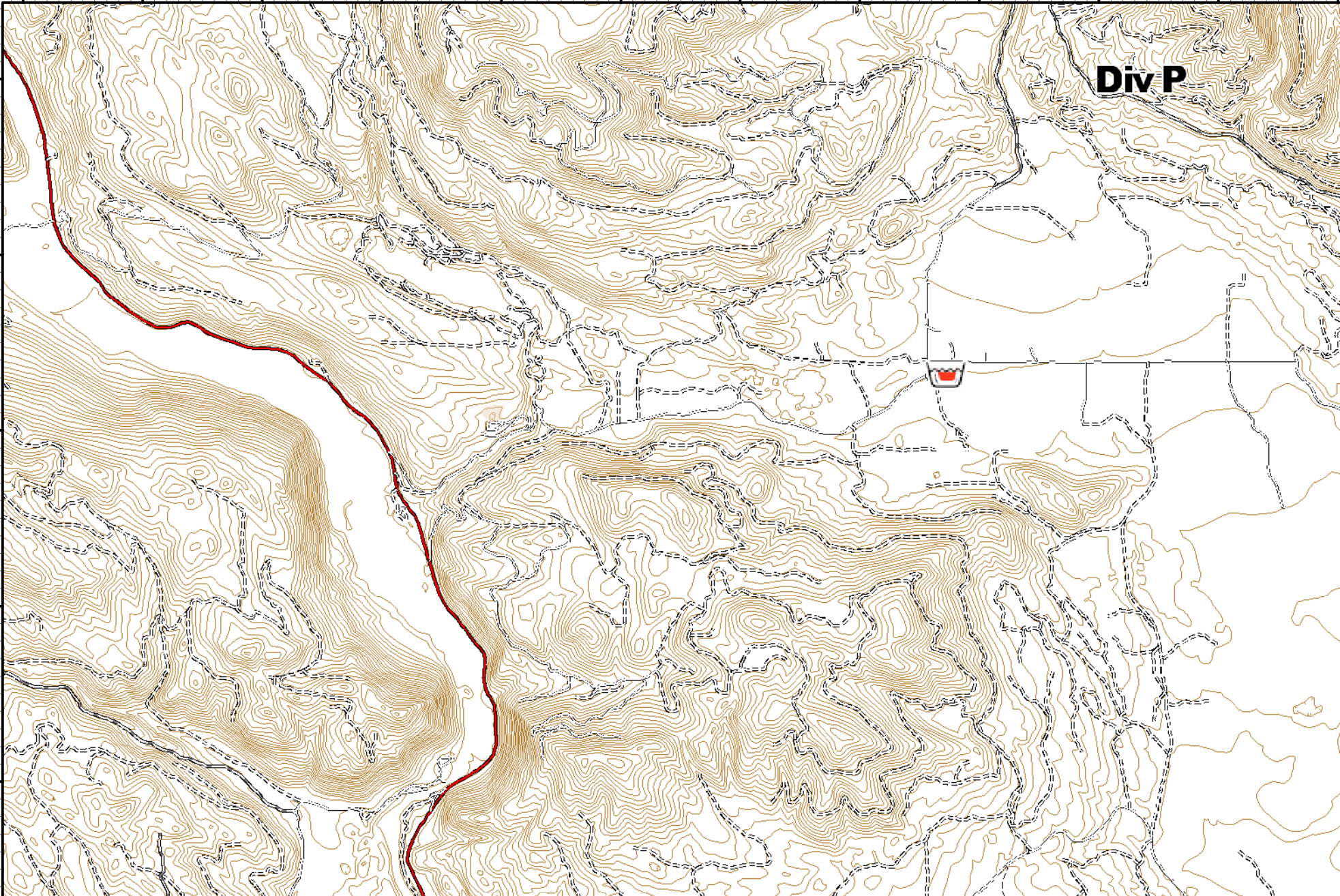
47°7'0"N

47°6'0"N

47°5'0"N

47°4'0"N

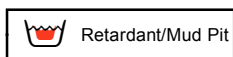
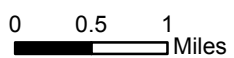
Div P



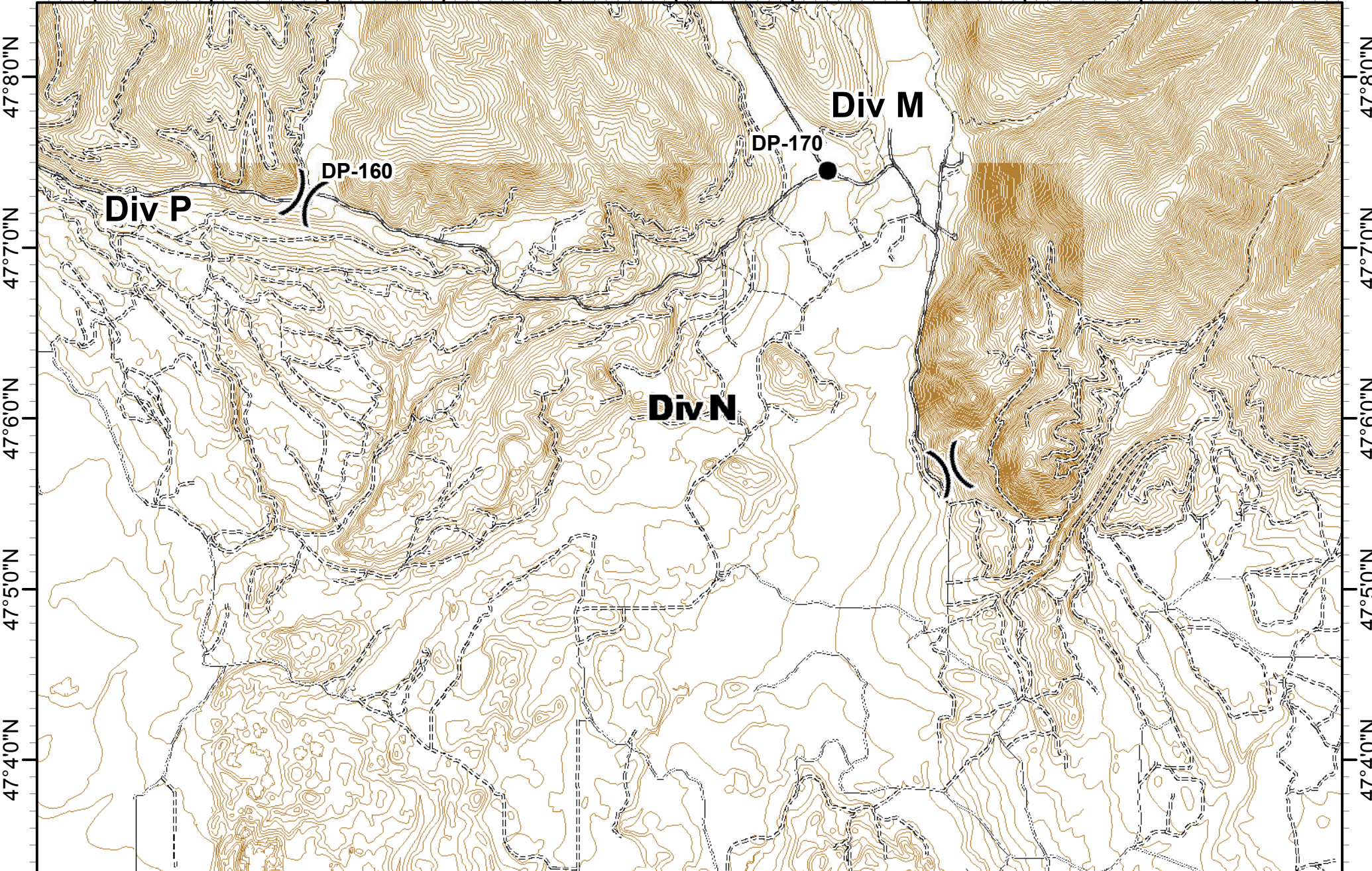
**Rice Ridge Fire
Incident Action Plan**



MT-LNF-001464 **MAP 8**
08/25/2017
Approx Acres 17,794

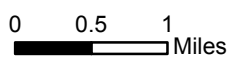




113°16'0"W 113°14'0"W 113°12'0"W 113°11'0"W 113°10'0"W 113°9'0"W 113°8'0"W 113°7'0"W 113°6'0"W



**Rice Ridge Fire
Incident Action Plan**

MT-LNF-001464 **MAP 9**
08/25/2017
Approx Acres 17,794



	Division Break		Drop Point
---	----------------	---	------------