

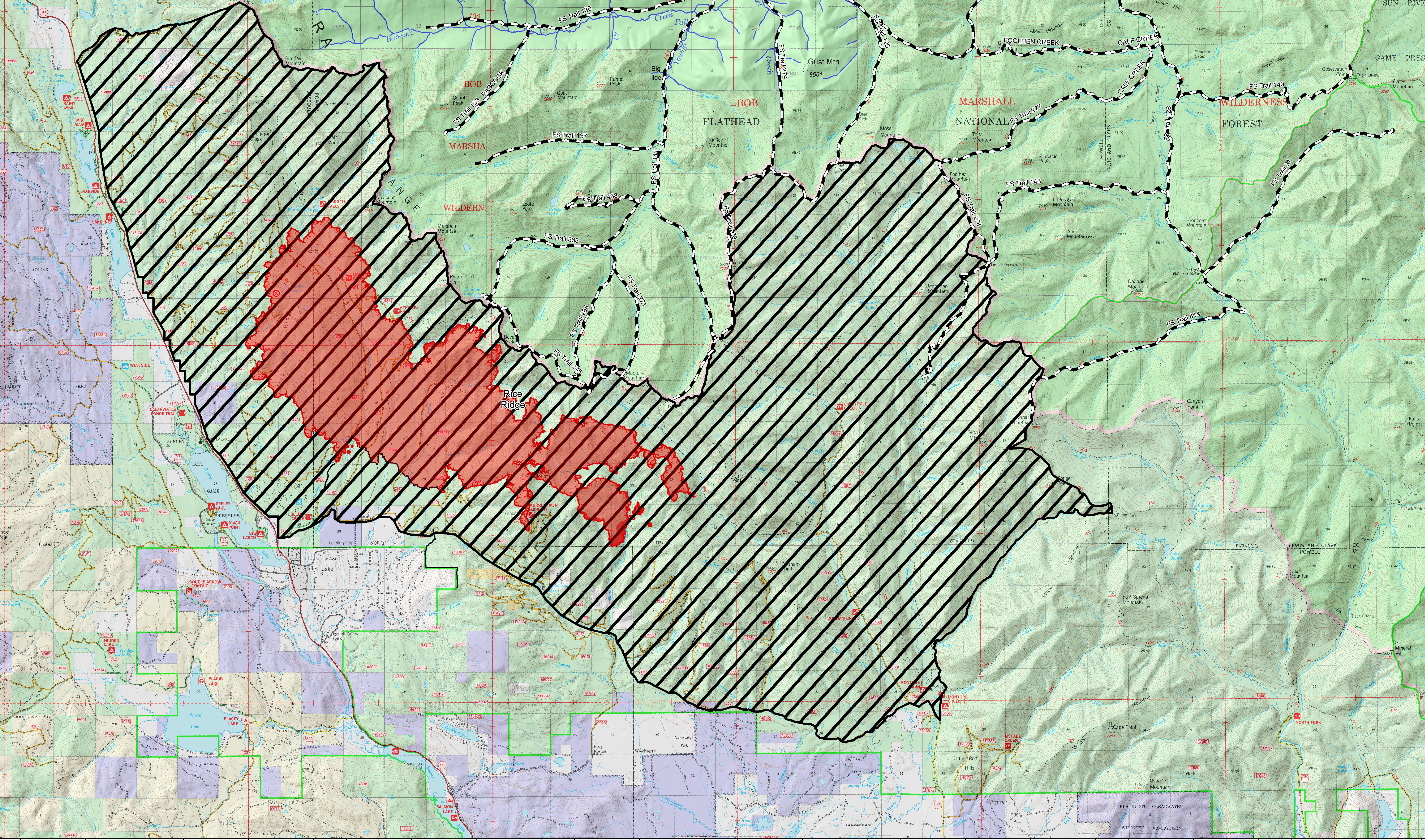
113°36'0"W 113°32'0"W 113°28'0"W 113°24'0"W 113°20'0"W 113°16'0"W 113°12'0"W 113°8'0"W 113°4'0"W 113°0'0"W 112°56'0"W

Public Information Map RICE RIDGE FIRE

MT-LNF-001464
August 25, 2017
17,991 Acres (IR Flight 8/25/17)



- Fire Origin 07/24/2014
- CLOSED Trails 08/1/2017
- Completed Line
- Uncontrolled Fire Edge
- Closure Area 08/19/2017
- IR_IntenseHeat
- Fire Perimeter



113°36'0"W 113°32'0"W 113°28'0"W 113°24'0"W 113°20'0"W 113°16'0"W 113°12'0"W 113°8'0"W 113°4'0"W 113°0'0"W 112°56'0"W

47°24'0"N
47°20'0"N
47°16'0"N
47°12'0"N
47°8'0"N

47°24'0"N
47°20'0"N
47°16'0"N
47°12'0"N
47°8'0"N