

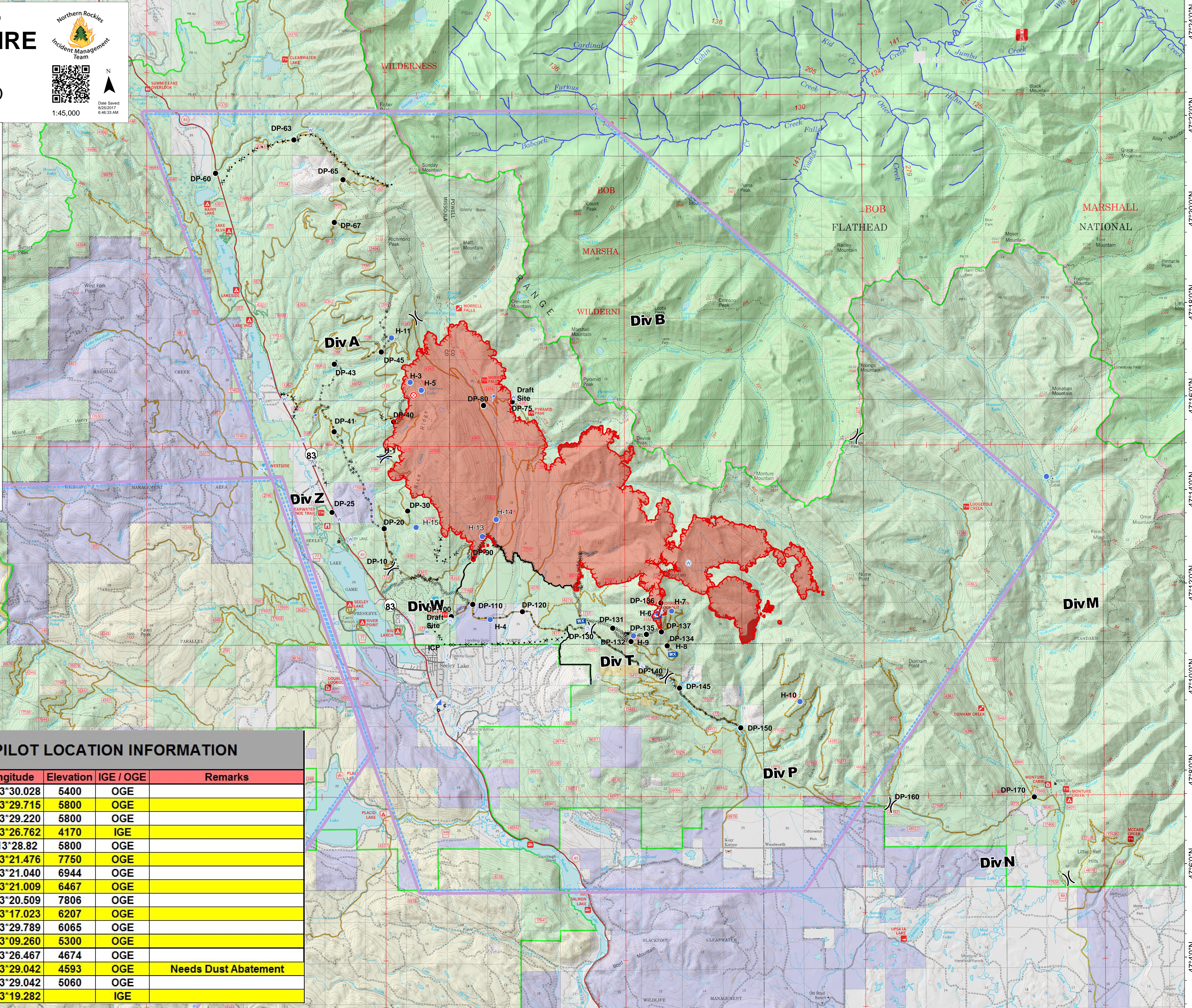
Air Operations Map

RICE RIDGE FIRE

MT-LNF-001464
August 25, 2017
 17,991 Acres (IR Flight 8/25/17)



- () Division Break
- (R) Repeater
- (M) Retardant/Mud Pit
- (●) Drop Point
- (⊗) Fire Origin
- (●) Helispot
- (I) Incident Command Post
- (L) Lookout
- (WX) Mobile Weather Unit
- (S) Staging Area
- (W) Water Source
- (—) Completed Line
- (---) Uncontrolled Fire Edge
- (---) Completed Hand Line
- (---) Road as Completed Line
- (---) Line Break Completed
- (---) Completed Dozer Line
- (---) Explosive Line
- (---) Proposed Dozer Line
- (---) Fire Break Planned or Incomplete
- (---) Highlighted Manmade Feature
- (---) Ridge/Geographic Feature
- (---) Other
- (---) TFR
- (---) IR_IntenseHeat
- (---) Wildfire Daily Fire Perimeter



RICE RIDGE PILOT LOCATION INFORMATION

Name	Type	Latitude	Longitude	Elevation	IGE / OGE	Remarks
H1	2	N47°14.767	W113°30.028	5400	OGE	
H2	2	N47°15.973	W113°29.715	5800	OGE	
H3	2	N47°16.363	W113°29.220	5800	OGE	
H4	1	N47°11.268	W113°26.762	4170	IGE	
H5	2	N47°16.16	W113°28.82	5800	OGE	
H6	3	N47°11.410	W113°21.476	7750	OGE	
H7	3	N47°11.426	W113°21.040	6944	OGE	
H8	2	N47°10.544	W113°21.009	6467	OGE	
H9	3	N47°12.512	W113°20.509	7806	OGE	
H10	3	N47°09.514	W113°17.023	6207	OGE	
H11	3	N47°17.305	W113°29.789	6065	OGE	
H12	3	N47°14.308	W113°09.260	5300	OGE	
H13	2	N47°13.067	W113°26.467	4674	OGE	
H14	3	N47°13.428	W113°29.042	4593	OGE	Needs Dust Abatement
H15	2	N47°13.264	W113°29.042	5060	OGE	
Mbr plant	3	N46°06.321	W113°19.282		IGE	