

Rice Ridge Fire

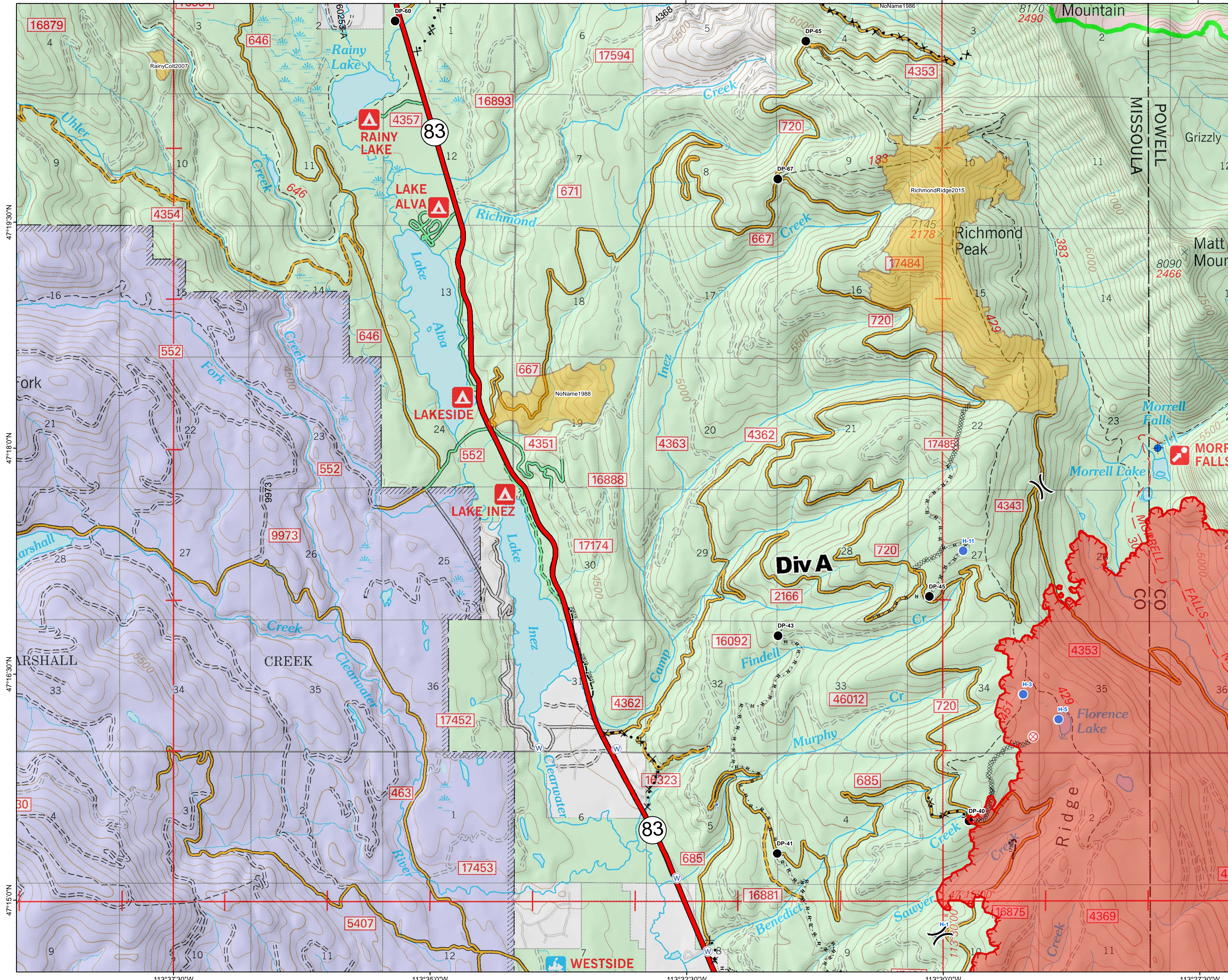
MT-LNF-001464

DIV A

Operations Map

August 25, 2017

17,991 Acres (IR Flight 8/25/17)



- () Division Break
- ⊕ Dip Site
- Drop Point
- ⊗ Fire Origin
- Helispot
- Lookout
- ⊞ Mobile Weather Unit
- ⊙ Staging Area
- ⊙ Water Source
- Uncontrolled Fire Edge
- Completed Hand Line
- Road as Completed Line
- Completed Dozer Line
- Proposed Dozer Line
- Interstate and Highways
- Private Roads
- County
- Plum Creek Roads
- Short Term Spec Roads
- Fire Perimeter
- Fire History

