

Rice Ridge Fire

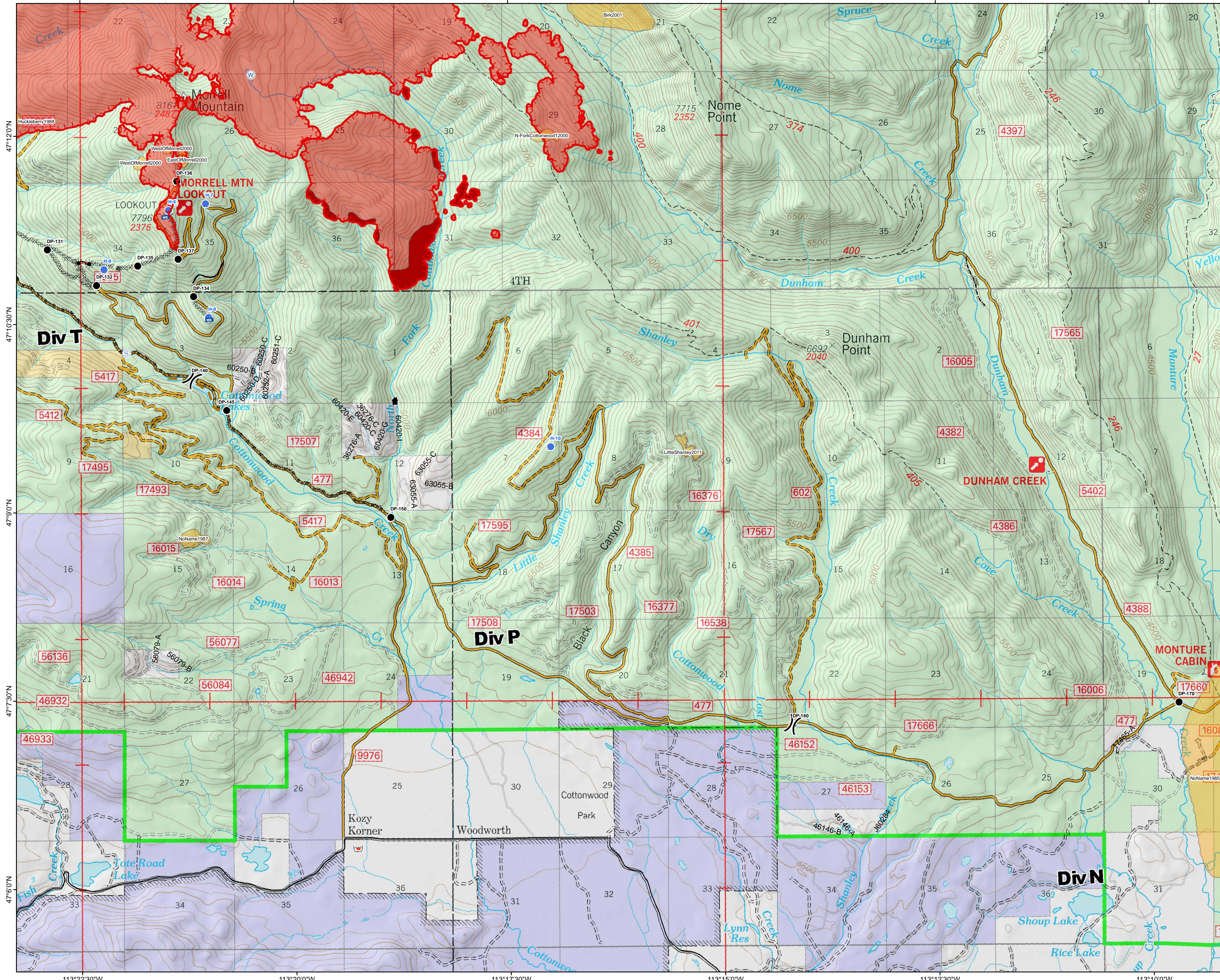
MT-LNF-001464

DIV P

Operations Map

August 25, 2017

17,991 Acres (IR Flight 8/25/17)



- () Division Break
- (R) Repeater
- (M) Retardant/Mud Pit
- (●) Drop Point
- (●) Helispot
- (MW) Mobile Weather Unit
- (S) Staging Area
- (W) Water Source
- (---) Uncontrolled Fire Edge
- (---) Completed Hand Line
- (---) Road as Completed Line
- (---) Completed Dozer Line
- (---) Explosive Line
- (---) Fire Break Planned or Incomplete
- (---) Ridge/Geographic Feature
- (---) Other Road
- (---) Private Roads
- (---) County
- (---) Authorization ?
- (---) Short Term Spec Roads
- (Red) Fire Perimeter
- (Dark Red) IR_IntenseHeat
- (Yellow) Fire History

