

Rice Ridge Fire

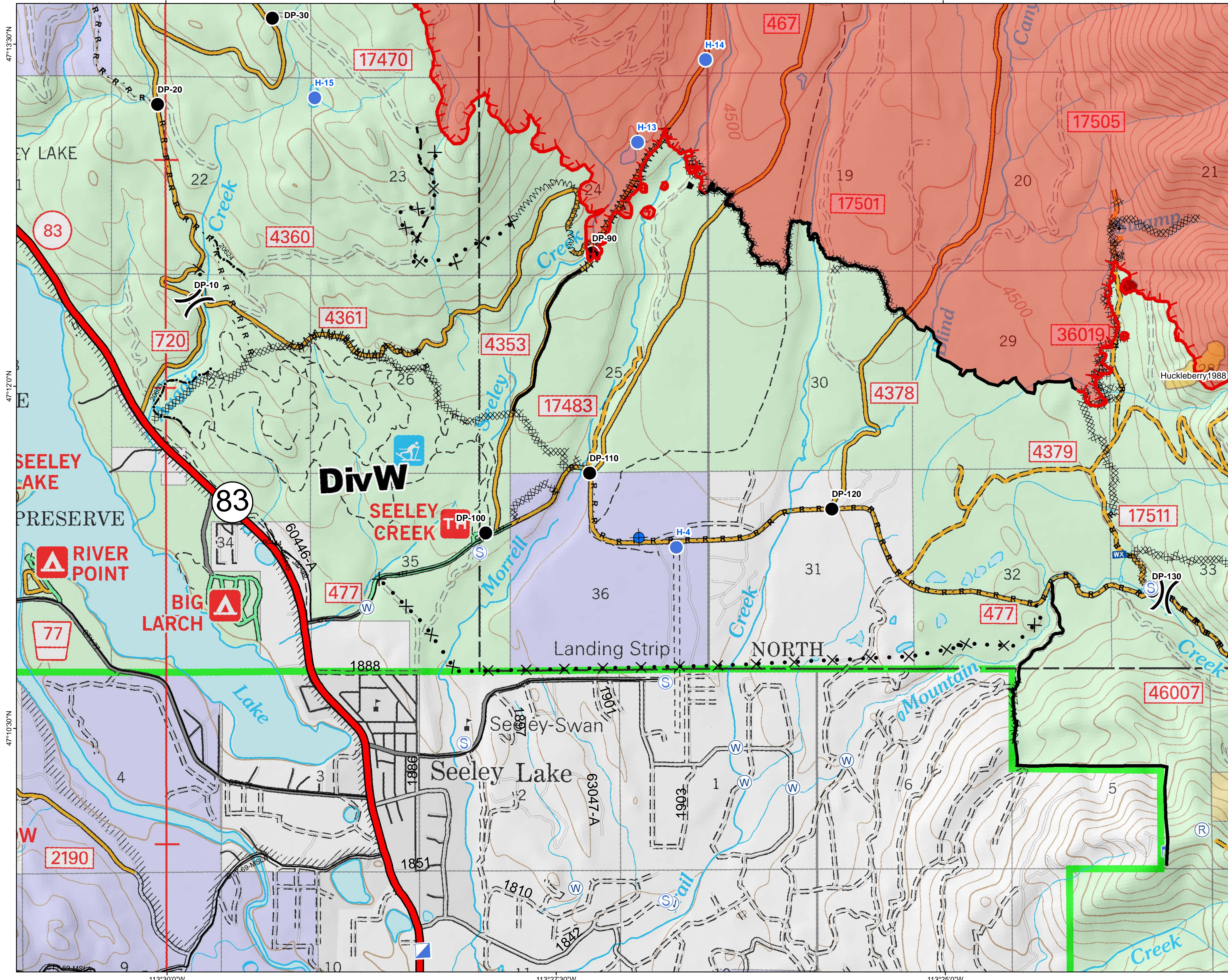
MT-LNF-001464

DIV W

Operations Map

August 25, 2017

17,991 Acres (IR Flight 8/25/17)



- () Division Break
- (R) Repeater
- (D) Dip Site
- (●) Drop Point
- (●) Helispot
- (I) Incident Command Post
- (F) Lookout
- (WX) Mobile Weather Unit
- (S) Staging Area
- (W) Water Source
- Completed Hand Line
- R-R-R Road as Completed Line
- MMM Line Break Completed
- xxxxx Completed Dozer Line
- x·x Proposed Dozer Line
- ~~~~~ Fire Break Planned or Incomplete
- Planned Fire Line
- Highlighted Manmade Feature
- Interstate and Highways
- Private Roads
- County
- Plum Creek Roads
- Short Term Spec Roads
- Fire Perimeter
- IR_IntenseHeat
- Fire History

Northern Rockies
Incident Management
Team