

Rice Ridge Fire

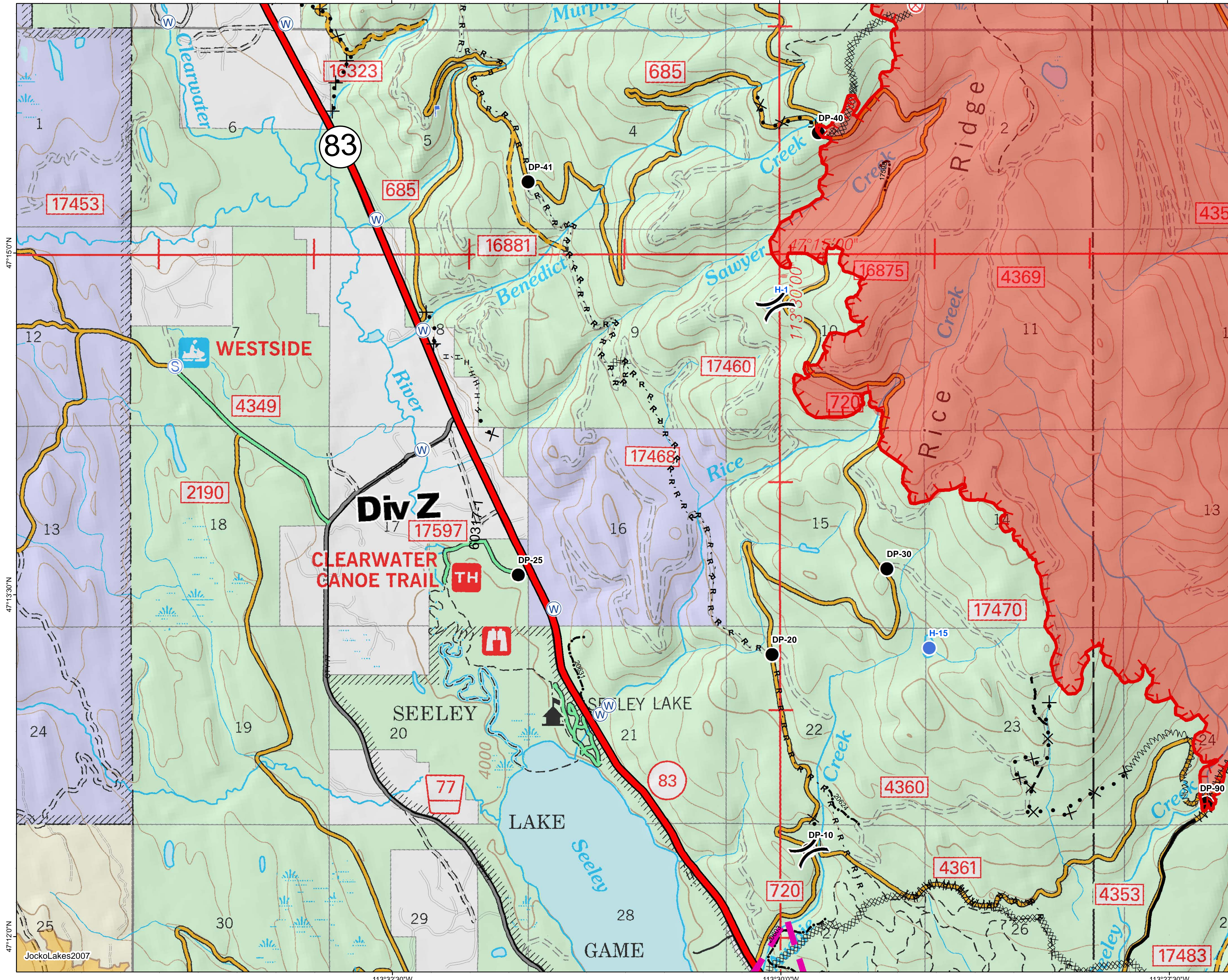
MT-LNF-001464

DIV Z

Operations Map

August 25, 2017

17,991 Acres (IR Flight 8/25/17)



- () Division Break
- Drop Point
- ⊙ Fire Origin
- Helispot
- ⊞ Lookout
- ⊞ Mobile Weather Unit
- ⊞ Staging Area
- ⊞ Water Source
- Completed Line
- Uncontrolled Fire Edge
- Completed Hand Line
- Road as Completed Line
- Line Break Completed
- Completed Dozer Line
- Proposed Dozer Line
- Fire Break Planned or Incomplete
- Planned Fire Line
- Interstate and Highways
- Private Roads
- County
- Plum Creek Roads
- Short Term Spec Roads
- Fire Perimeter
- Fire History

Northern Rockies
Incident Management
Team

0 0.175 0.35 0.7 Miles