


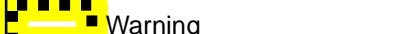




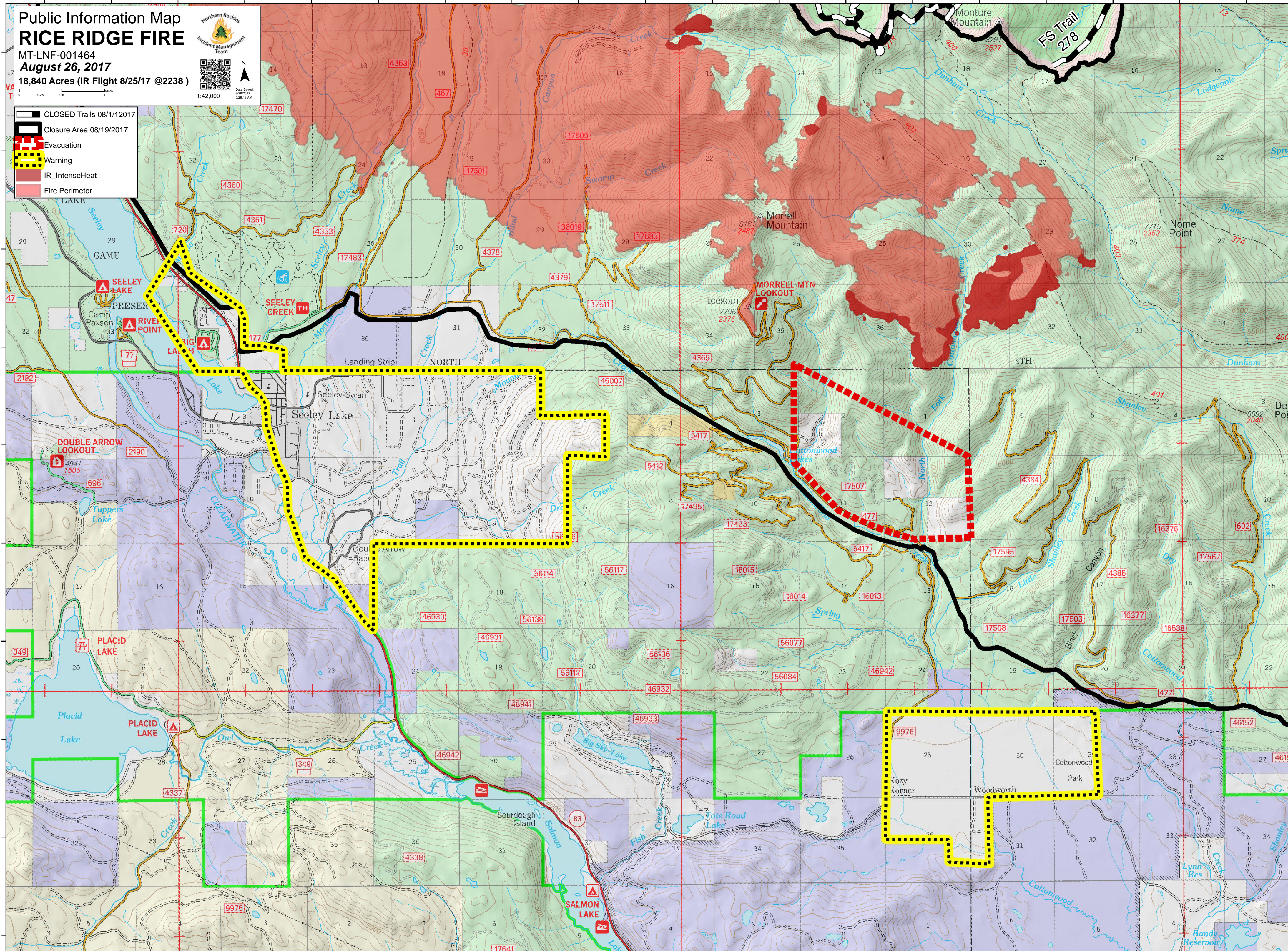
113°32'0"W 113°28'0"W 113°24'0"W 113°20'0"W 113°16'0"W

Public Information Map
RICE RIDGE FIRE
 MT-LNF-001464
August 26, 2017
 18,840 Acres (IR Flight 8/25/17 @2238)




1:42,000
 Date Saved: 8/26/2017 8:06:18 AM

-  CLOSED Trails 08/1/2017
-  Closure Area 08/19/2017
-  Evacuation
-  Warning
-  IR_IntenseHeat
-  Fire Perimeter



113°32'0"W 113°28'0"W 113°24'0"W 113°20'0"W 113°16'0"W

47°12'0"N

47°12'0"N

47°8'0"N

47°8'0"N