

113°37'0"W

113°35'0"W

113°33'0"W

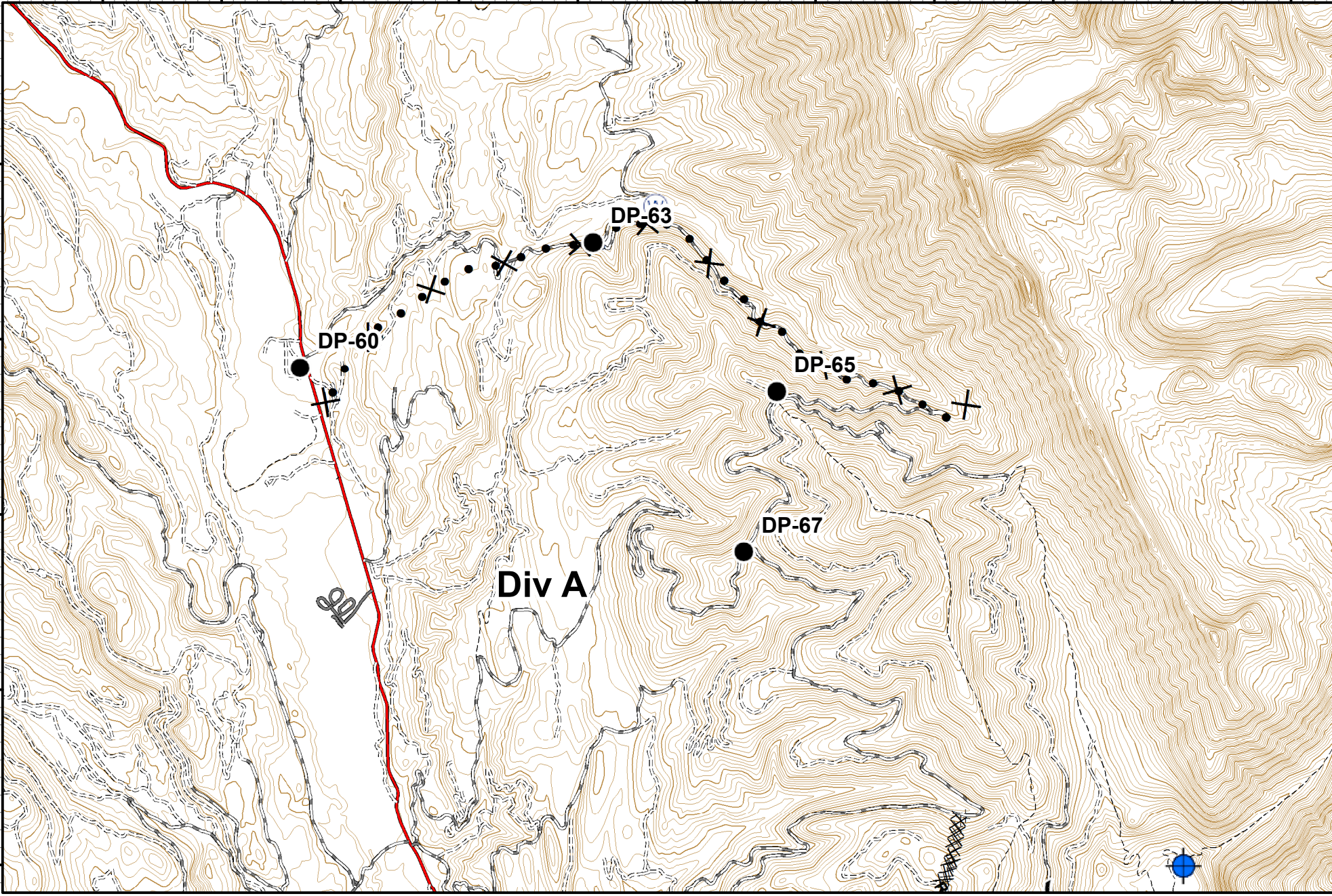
113°31'0"W

113°29'0"W

113°27'0"W

47°22'0"N  
47°21'0"N  
47°20'0"N  
47°19'0"N  
47°18'0"N

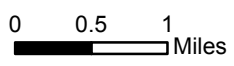
47°22'0"N  
47°21'0"N  
47°20'0"N  
47°19'0"N  
47°18'0"N



**Rice Ridge Fire Incident Action Plan**

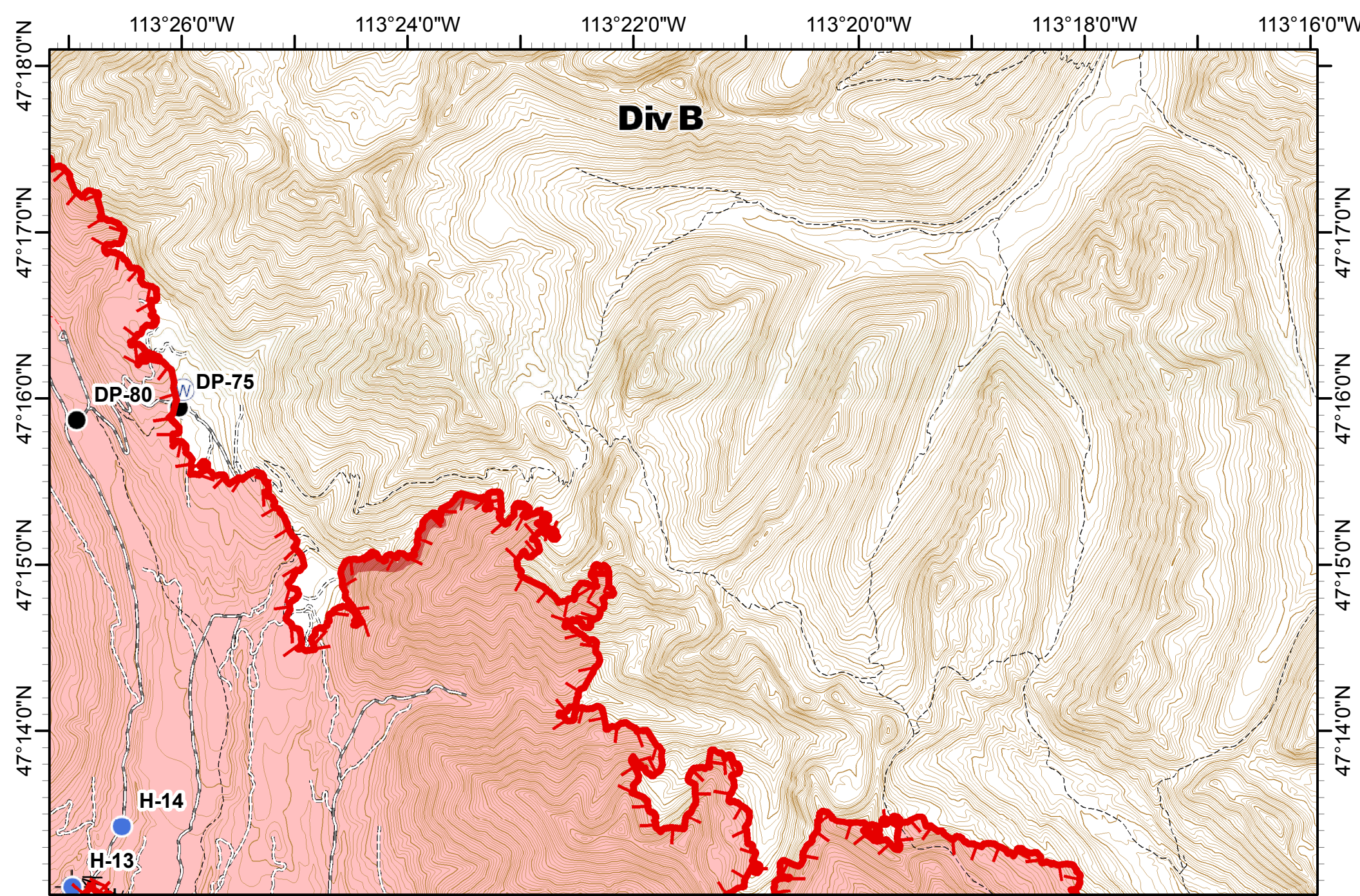


MT-LNF-001464  
08/26/2017  
**MAP 1**  
Approx Acres 17,991





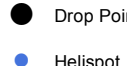


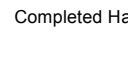
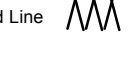



Dip Site	Drop Point	Completed Dozer Line	Road as Completed Line	Proposed Dozer Line
Water Source				

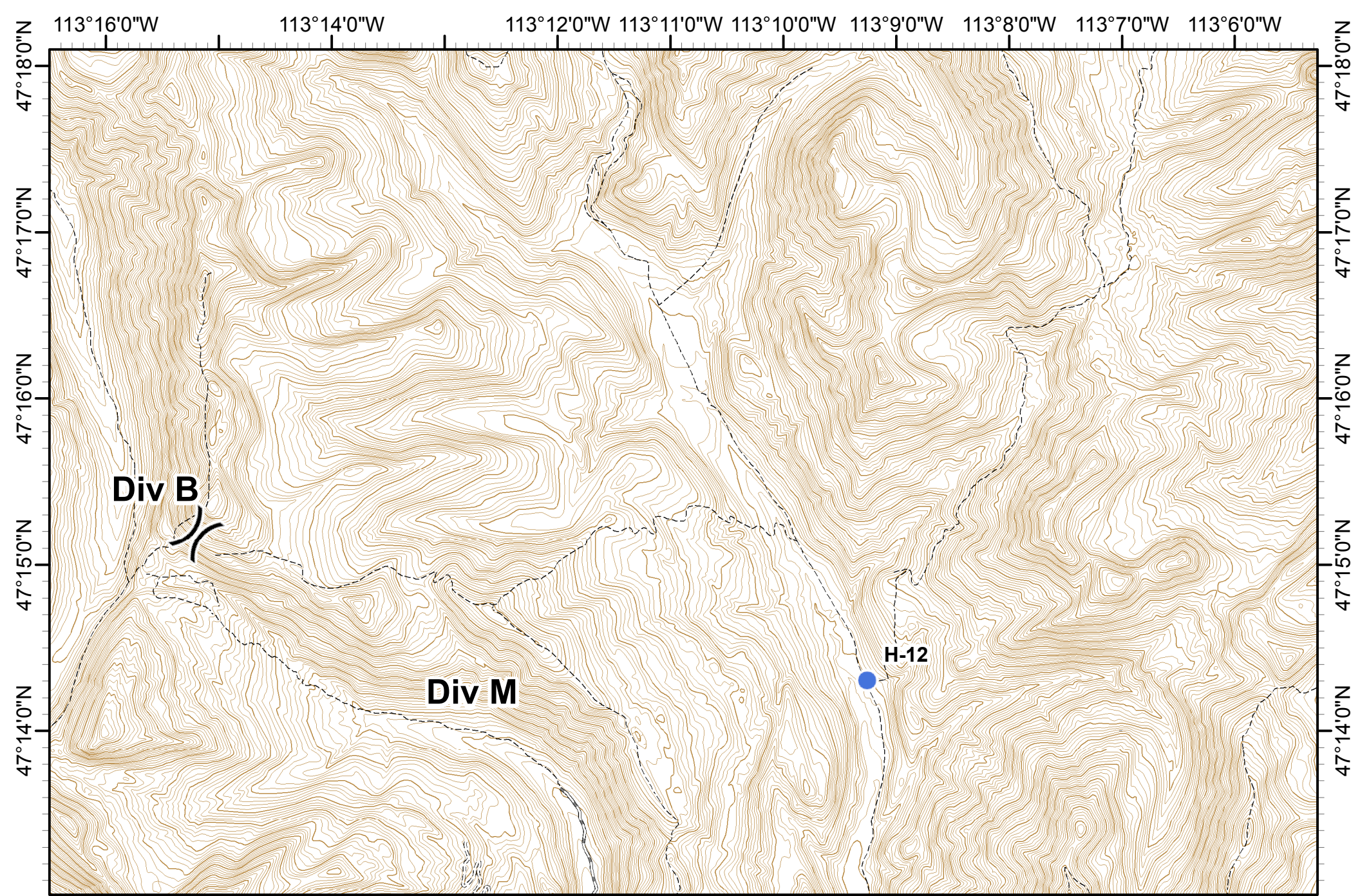




**Rice Ridge Fire  
Incident Action Plan**


 MT-LNF-001464  
 08/26/2017  
 Approx Acres 17,991  
**MAP 3**  
 0 0.5 1 Miles

 Dip Site	 Drop Point	 Lookout	 H - Completed Hand Line	 Line Break Completed	 Wildfire Daily Fire Perimeter
 Helispot	 Water Source	 IR_IntenseHeat			

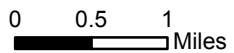


**Rice Ridge Fire  
Incident Action Plan**

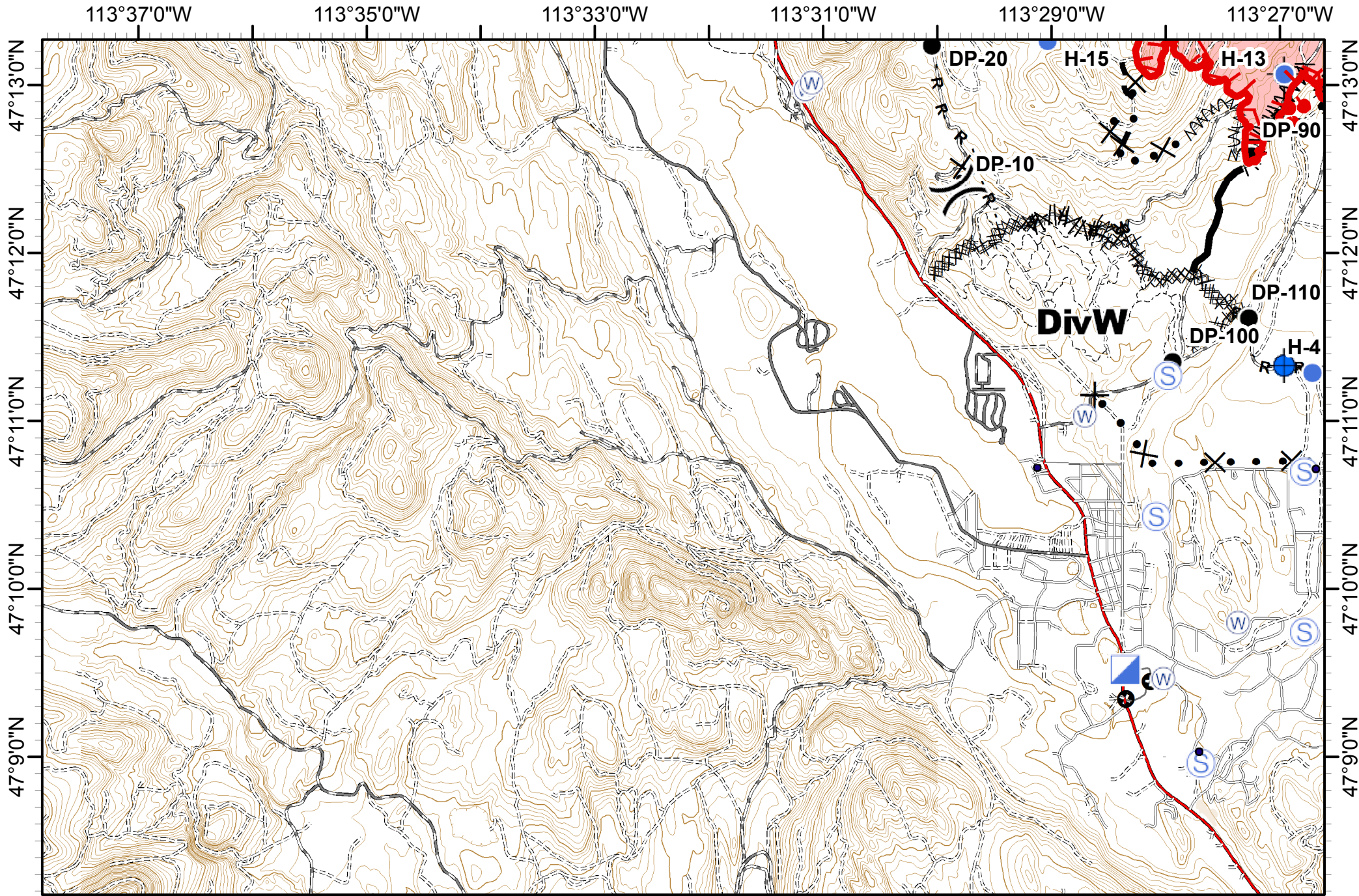


MT-LNF-001464  
08/26/2017  
Approx Acres 17,991

**MAP 4**



	Division Break		Helispot
--	----------------	--	----------



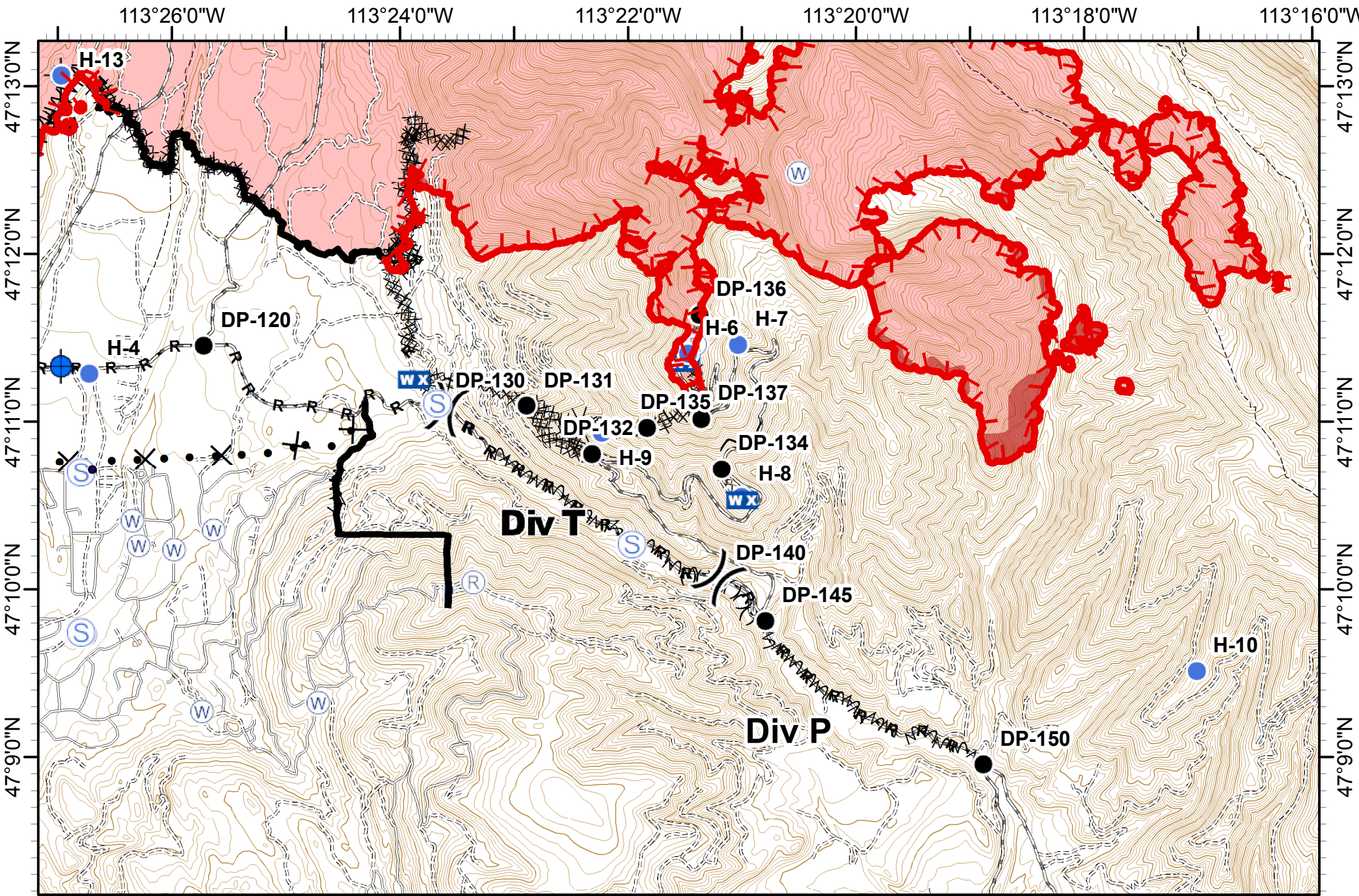
**Rice Ridge Fire Incident Action Plan**

MT-LNF-001464  
08/26/2017  
Approx Acres 17,991  
**MAP 5**

0 0.5 1 Miles



Division Break	Drop Point	Staging Area	Completed Dozer Line	Line Break Completed	Planned Fire Line
Dip Site	Helispot	Water Source	Completed Hand Line	Proposed Dozer Line	Other
Incident Command Post		Road as Completed Line	Fire Break Planned or Incomplete		Wildfire Daily Fire Perimeter



# Rice Ridge Fire Incident Action Plan

MT-LNF-001464  
08/26/2017  
MAP 6  
Approx Acres 17,991



0 0.5 1 Miles

Division Break	Dip Site	Lookout	Completed Dozer Line	Line Break Completed	Fire Break Planned or Incomplete
Repeater	Drop Point	Mobile Weather Unit	Completed Hand Line	Explosive Line	Highlighted Manmade Feature
	Helispot	Staging Area	Proposed Dozer Line	Ridge/Geographic Feature	Wildfire Daily Fire Perimeter
	Water Source				
	IR_IntenseHeat				

113°16'0"W

113°14'0"W

113°12'0"W

113°11'0"W

113°10'0"W

113°9'0"W

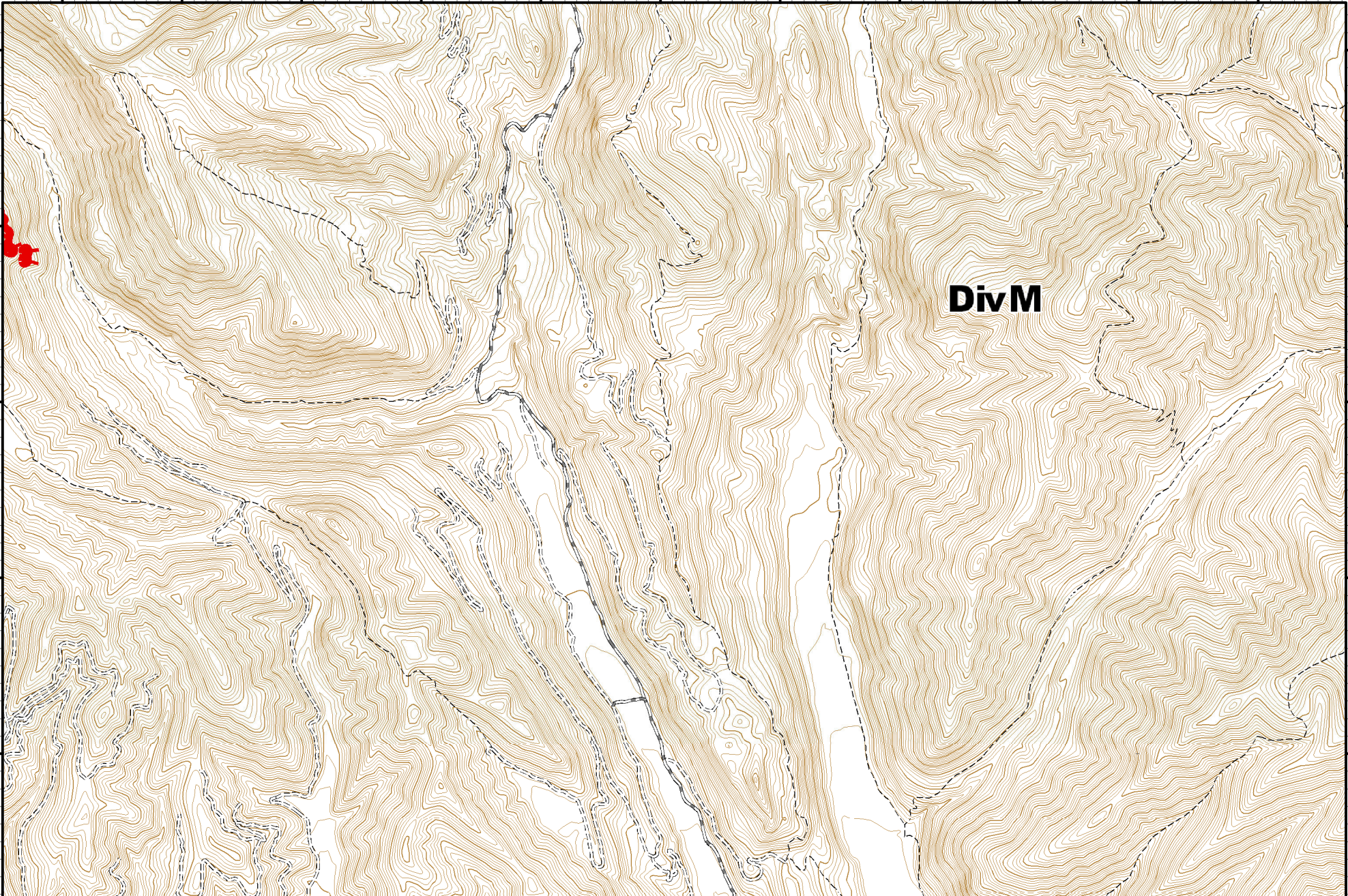
113°8'0"W

113°7'0"W

113°6'0"W

47°13'0"N  
47°12'0"N  
47°11'0"N  
47°10'0"N  
47°9'0"N

47°13'0"N  
47°12'0"N  
47°11'0"N  
47°10'0"N  
47°9'0"N

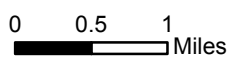


**Div M**

**Rice Ridge Fire  
Incident Action Plan**



MT-LNF-001464  
08/26/2017  
**MAP 7**  
Approx Acres 17,991



Wildfire Daily Fire Perimeter

113°26'0"W

113°24'0"W

113°22'0"W

113°20'0"W

113°18'0"W

113°16'0"W

47°8'0"N

47°7'0"N

47°6'0"N

47°5'0"N

47°4'0"N

47°8'0"N

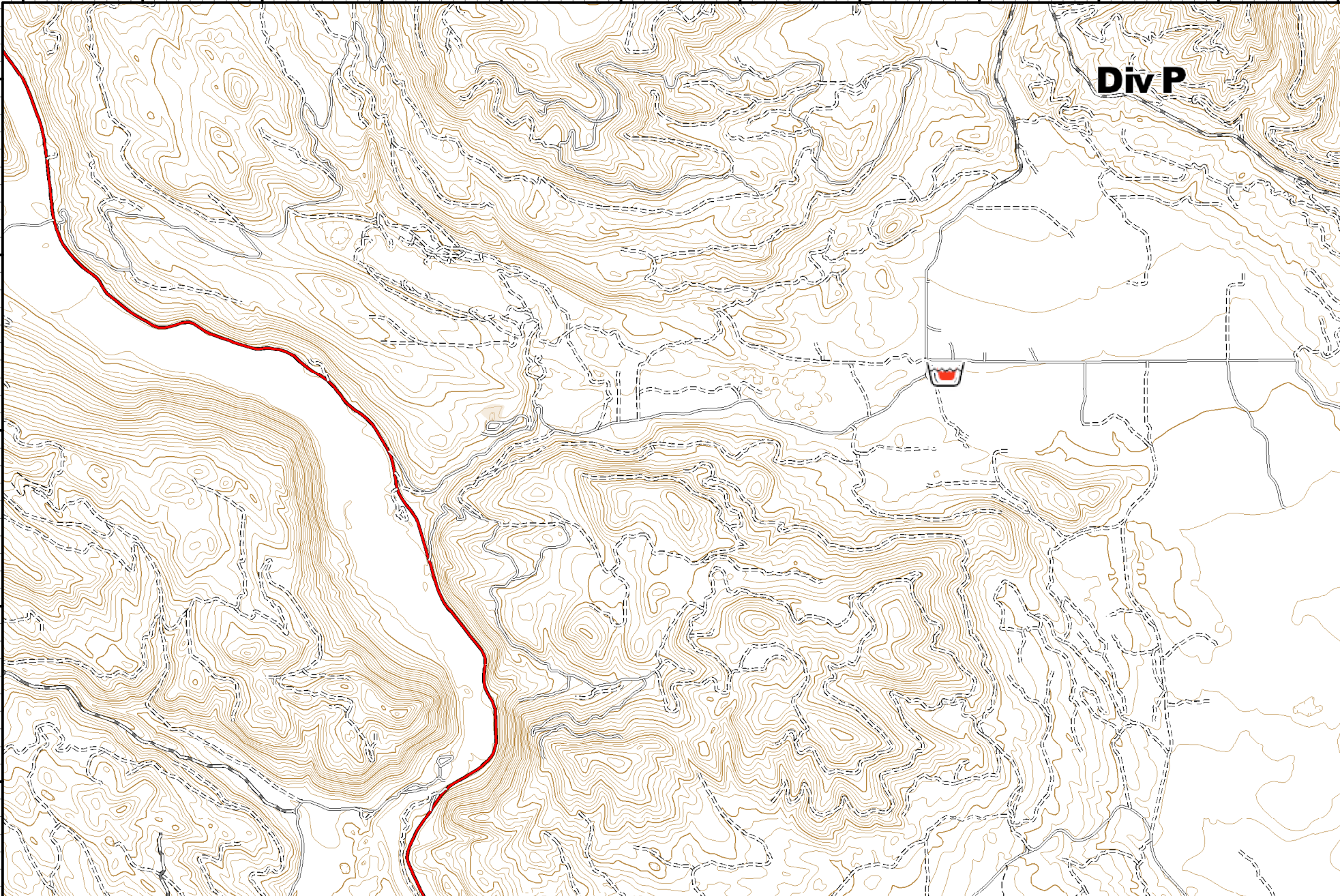
47°7'0"N

47°6'0"N

47°5'0"N

47°4'0"N

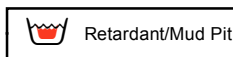
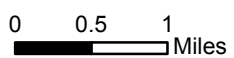
**Div P**



**Rice Ridge Fire  
Incident Action Plan**

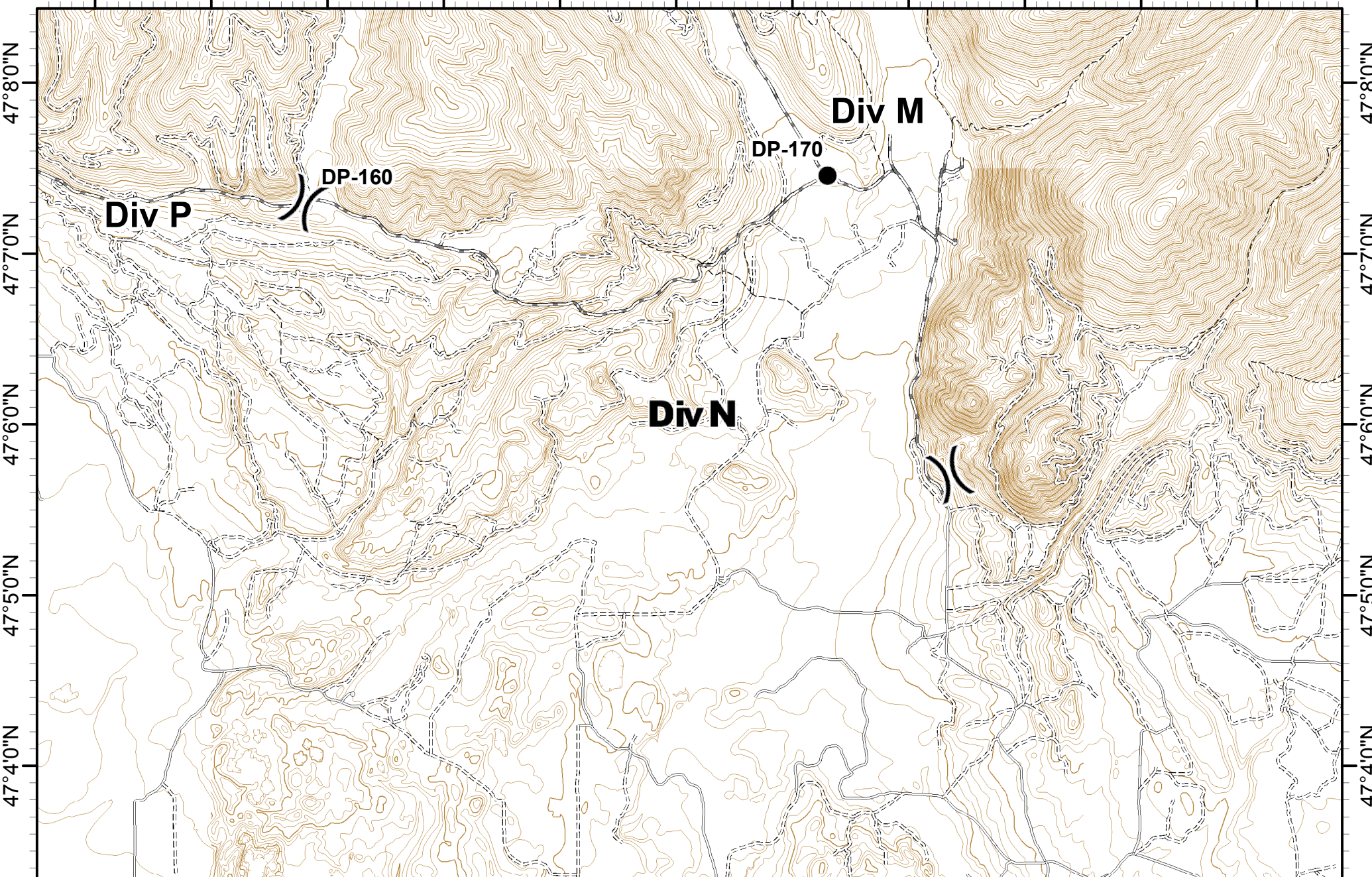


MT-LNF-001464 **MAP 8**  
08/26/2017  
Approx Acres 17,991





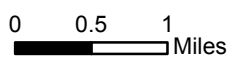
113°16'0"W 113°14'0"W 113°12'0"W 113°11'0"W 113°10'0"W 113°9'0"W 113°8'0"W 113°7'0"W 113°6'0"W



**Rice Ridge Fire  
Incident Action Plan**



MT-LNF-001464 **MAP 9**  
08/26/2017  
Approx Acres 17,991



	Division Break		Drop Point
--	----------------	--	------------