

# Rice Ridge Fire

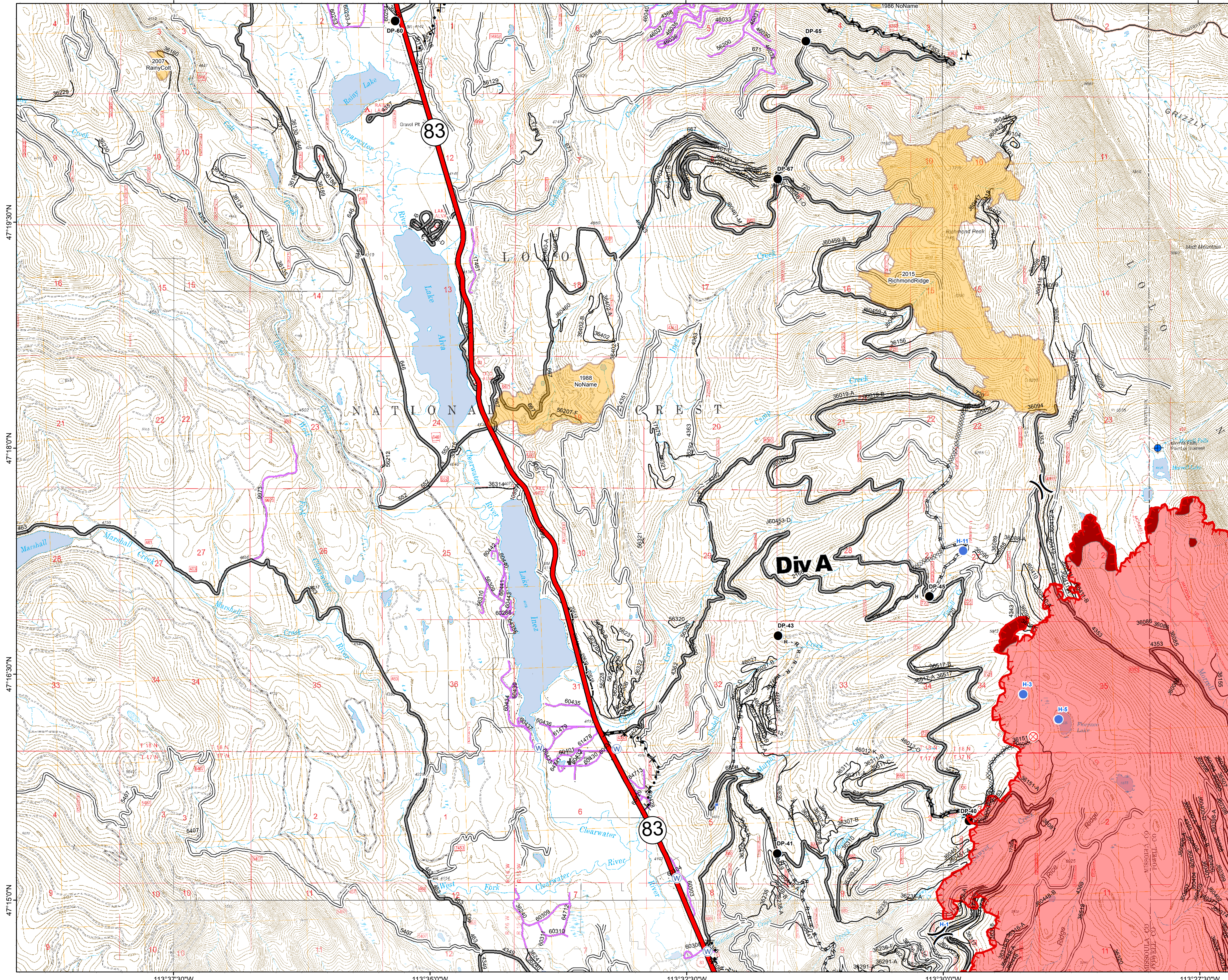
MT-LNF-001464

DIV A

## Operations Map

### August 26, 2017

18,840 Acres (IR Flight 8/25/17 2238)



- ( ) Division Break
- ⊕ Dip Site
- Drop Point
- ⊗ Fire Origin
- Helispot
- ⌈ Lookout
- Ⓜ Mobile Weather Unit
- Ⓢ Staging Area
- Ⓜ Water Source
- Uncontrolled Fire Edge
- H · H · H Completed Hand Line
- R · R · R Road as Completed Line
- ⊗ Completed Dozer Line
- × · × Proposed Dozer Line
- Interstate and Highways
- Forest Service System Roads
- 1 - BASIC(CLOSED); 2 - HIGH CLEARANCE
- 3 - PASSENGER CARS; 4 - MODERATE COMFORT; 5 - HIGH COMFORT
- Private Roads
- County
- Plum Creek Roads
- Short Term Spec Roads
- Fire Perimeter
- IR\_IntenseHeat
- Fire History

Northern Rockies  
Incident Management  
Team

0 0.275 0.55 1.1 Miles