

Rice Ridge Fire

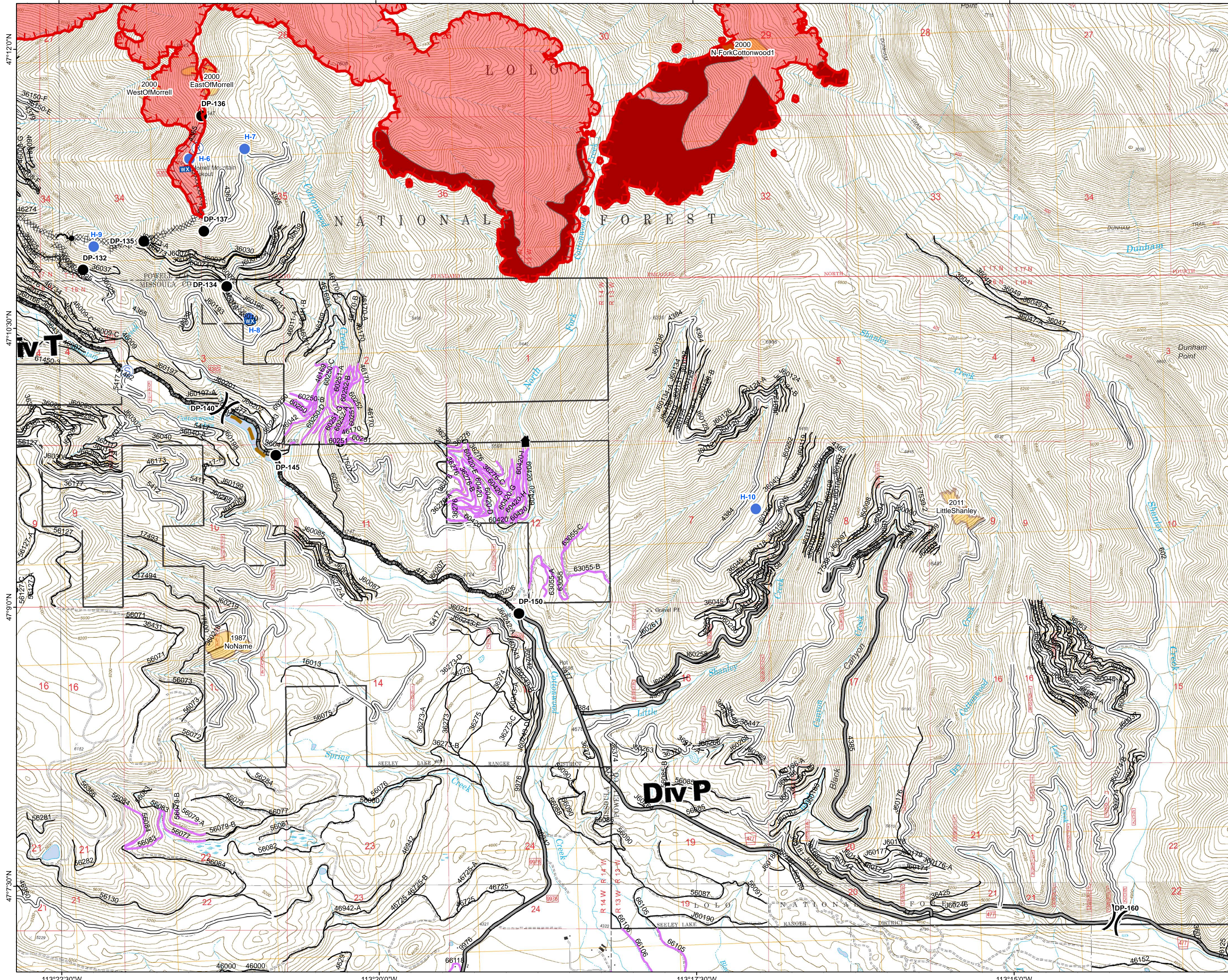
MT-LNF-001464

DIV P

Operations Map

August 26, 2017

18,840 Acres (IR Flight 8/25/17 2238)



- () Division Break
- (R) Repeater
- Drop Point
- Helispot
- WX Mobile Weather Unit
- S Staging Area
- Uncontrolled Fire Edge
- H-H Completed Hand Line
- R-R Road as Completed Line
- Completed Dozer Line
- Explosive Line
- Fire Break Planned or Incomplete
- Ridge/Geographic Feature
- Other Road
- Forest Service System Roads
- 1-BASIC(CLOSED); 2-HIGH CLEARANCE
- 3-PASSENGER CARS; 4-MODERATE COMFORT; 5-HIGH COMFORT
- Private Roads
- Fire Perimeter
- IR_IntenseHeat
- Fire History

Northern Rockies
Incident Management
Team

0 0.25 0.5 1 Miles