

Rice Ridge Fire

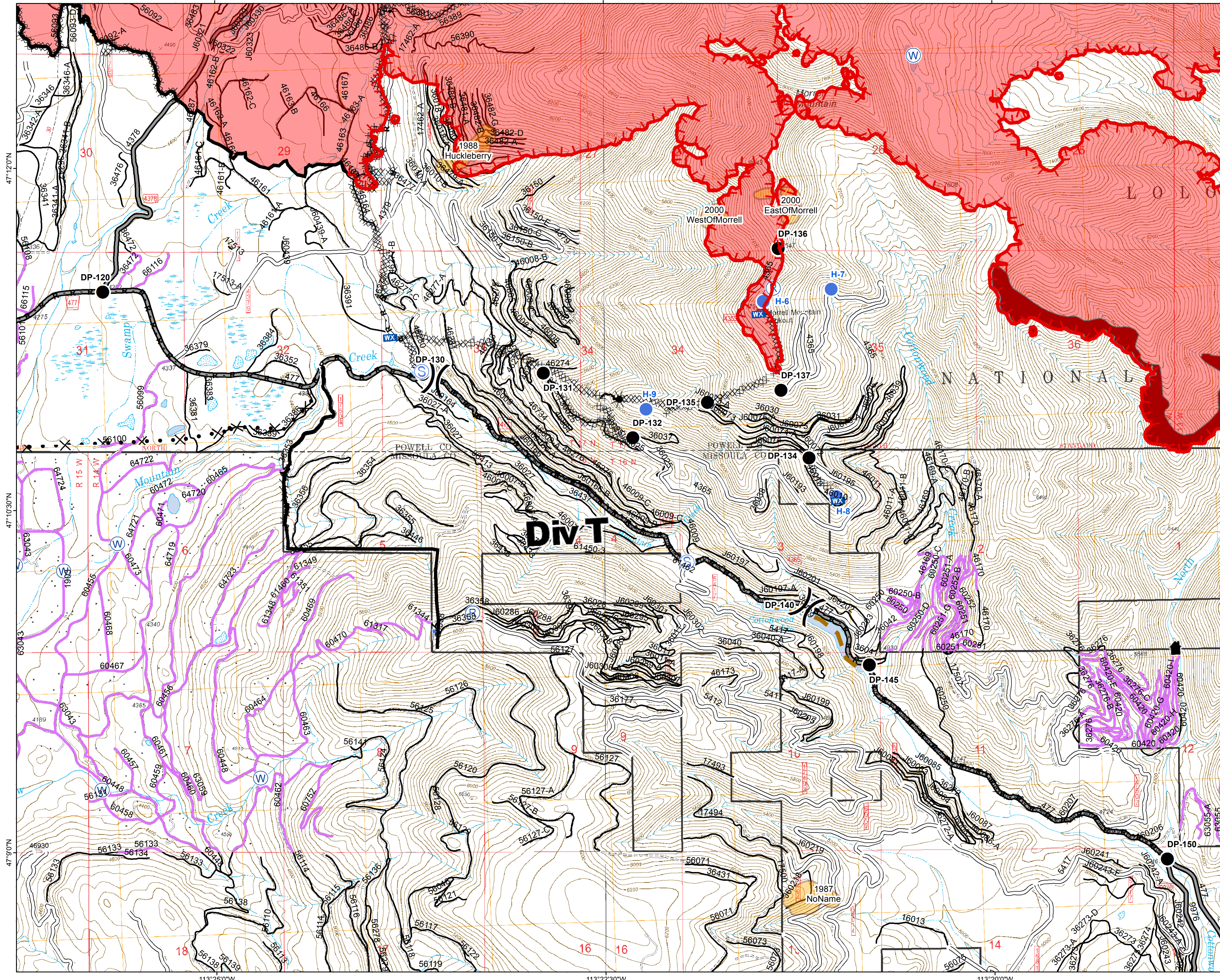
MT-LNF-001464

DIV T

Operations Map

August 26, 2017

18,840 Acres (IR Flight 8/25/17 2238)



- () Division Break
- (R) Repeater
- Drop Point
- Helispot
- ┌ Lookout
- WX Mobile Weather Unit
- S Staging Area
- W Water Source
- Completed Line
- ┌ Uncontrolled Fire Edge
- H · H · H Completed Hand Line
- R · R · R Road as Completed Line
- XXXXX Completed Dozer Line
- * * * Explosive Line
- X · X · X Proposed Dozer Line
- ~~~~~ Fire Break Planned or Incomplete
- · · · · Highlighted Manmade Feature
- Ridge/Geographic Feature
- Other Road
- Forest Service System Roads
- 1 - BASIC(CLOSED); 2 - HIGH CLEARANCE
- 3 - PASSENGER CARS; 4 - MODERATE COMFORT; 5 - HIGH COMFORT
- Private Roads
- Other Forest Roads
- Fire Perimeter
- IR_IntenseHeat
- Fire History

Northern Rockies
Incident Management
Team

