

Rice Ridge Fire

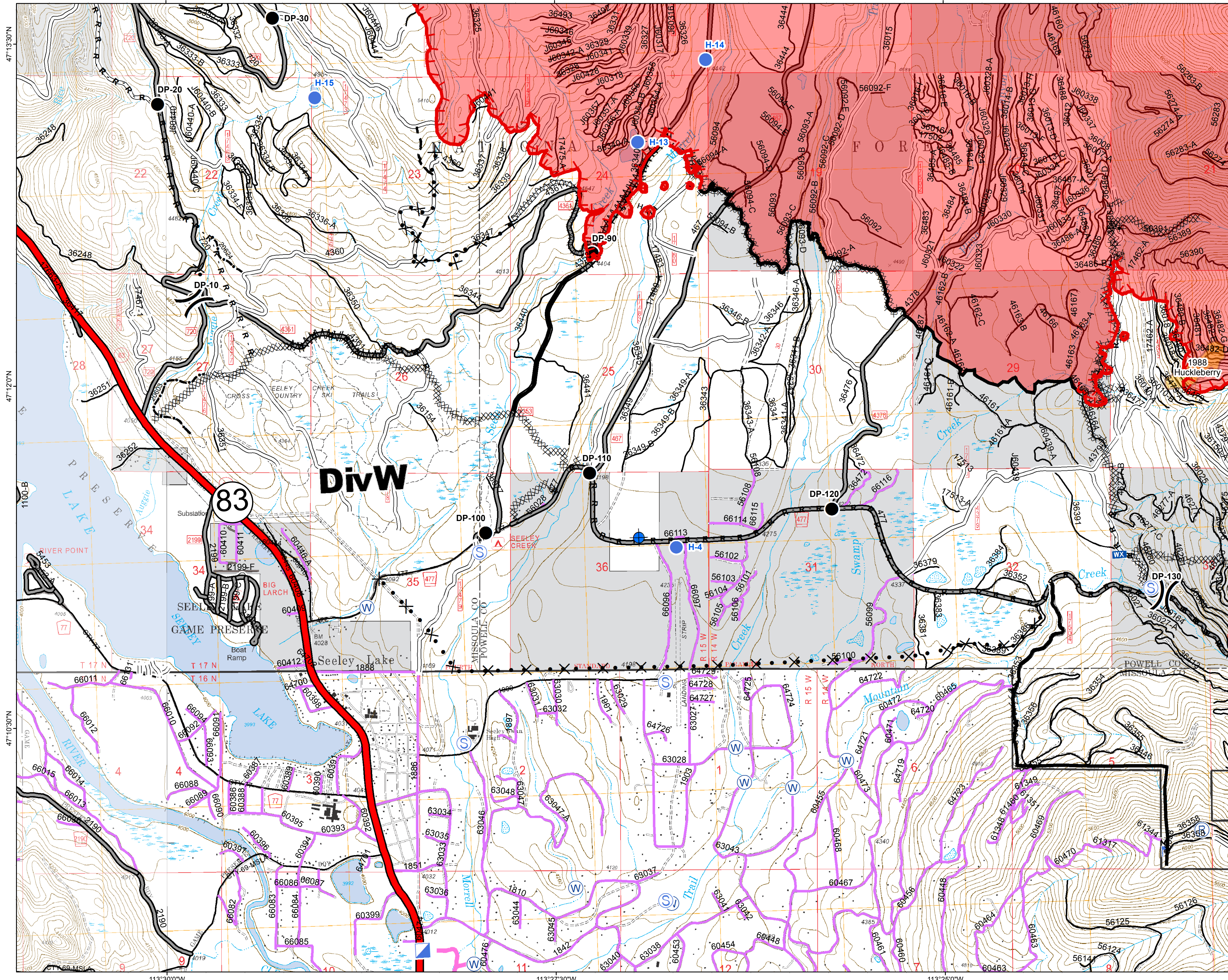
MT-LNF-001464

DIV W

Operations Map

August 26, 2017

18,840 Acres (IR Flight 8/25/17 2238)



- () Division Break
- (R) Repeater
- (D) Dip Site
- (H) Helispot
- (ICP) Incident Command Post
- (L) Lookout
- (MW) Mobile Weather Unit
- (S) Staging Area
- (W) Water Source
- (—) Completed Line
- (---) Uncontrolled Fire Edge
- (- - -) Completed Hand Line
- (R - R - R) Road as Completed Line
- (M - M - M) Line Break Completed
- (X - X - X) Completed Dozer Line
- (X · X · X) Proposed Dozer Line
- (~~~~~) Fire Break Planned or Incomplete
- (- - -) Planned Fire Line
- (· · · · ·) Highlighted Manmade Feature
- (—) Other
- (—) Interstate and Highways
- Forest Service System Roads
 - 1 - BASIC(CLOSED); 2 - HIGH CLEARANCE
 - 3 - PASSENGER CARS; 4 - MODERATE COMFORT; 5 - HIGH COMFORT
- (—) Private Roads
- (—) County
- (---) Plum Creek Roads
- (- - -) Short Term Spec Roads
- (---) Fire Perimeter
- (---) Fire History

