

Rice Ridge Fire

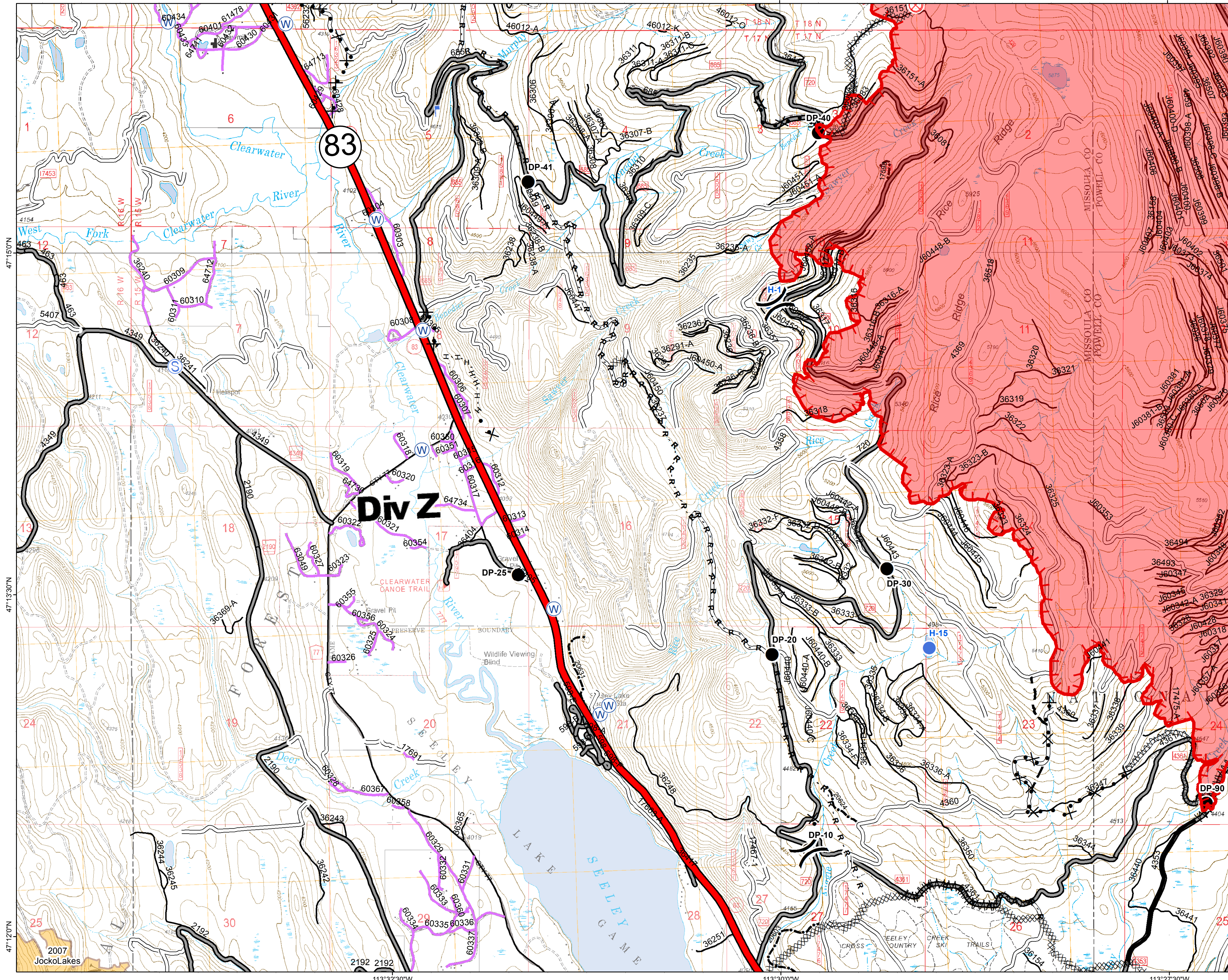
MT-LNF-001464

DIV Z

Operations Map


August 26, 2017

18,840 Acres (IR Flight 8/25/17 2238)



- () Division Break
- Drop Point
- ⊙ Fire Origin
- Helispot
- ⌒ Lookout
- ☒ Mobile Weather Unit
- ⊙ Staging Area
- ⊙ Water Source
- Completed Line
- Uncontrolled Fire Edge
- H · H · H Completed Hand Line
- R · R · R Road as Completed Line
- M · M · M Line Break Completed
- ⊗ · ⊗ Proposed Dozer Line
- ⋯ Fire Break Planned or Incomplete
- - - Planned Fire Line
- Interstate and Highways
- Forest Service System Roads
- 1 - BASIC(CLOSED); 2 - HIGH CLEARANCE
- 3 - PASSENGER CARS; 4 - MODERATE COMFORT; 5 - HIGH COMFORT
- Private Roads
- County
- Plum Creek Roads
- Short Term Spec Roads
- Fire Perimeter
- Fire History

Northern Rockies
Incident Management
Team



0 0.25 0.5 1 Miles

2007
JockoLakes