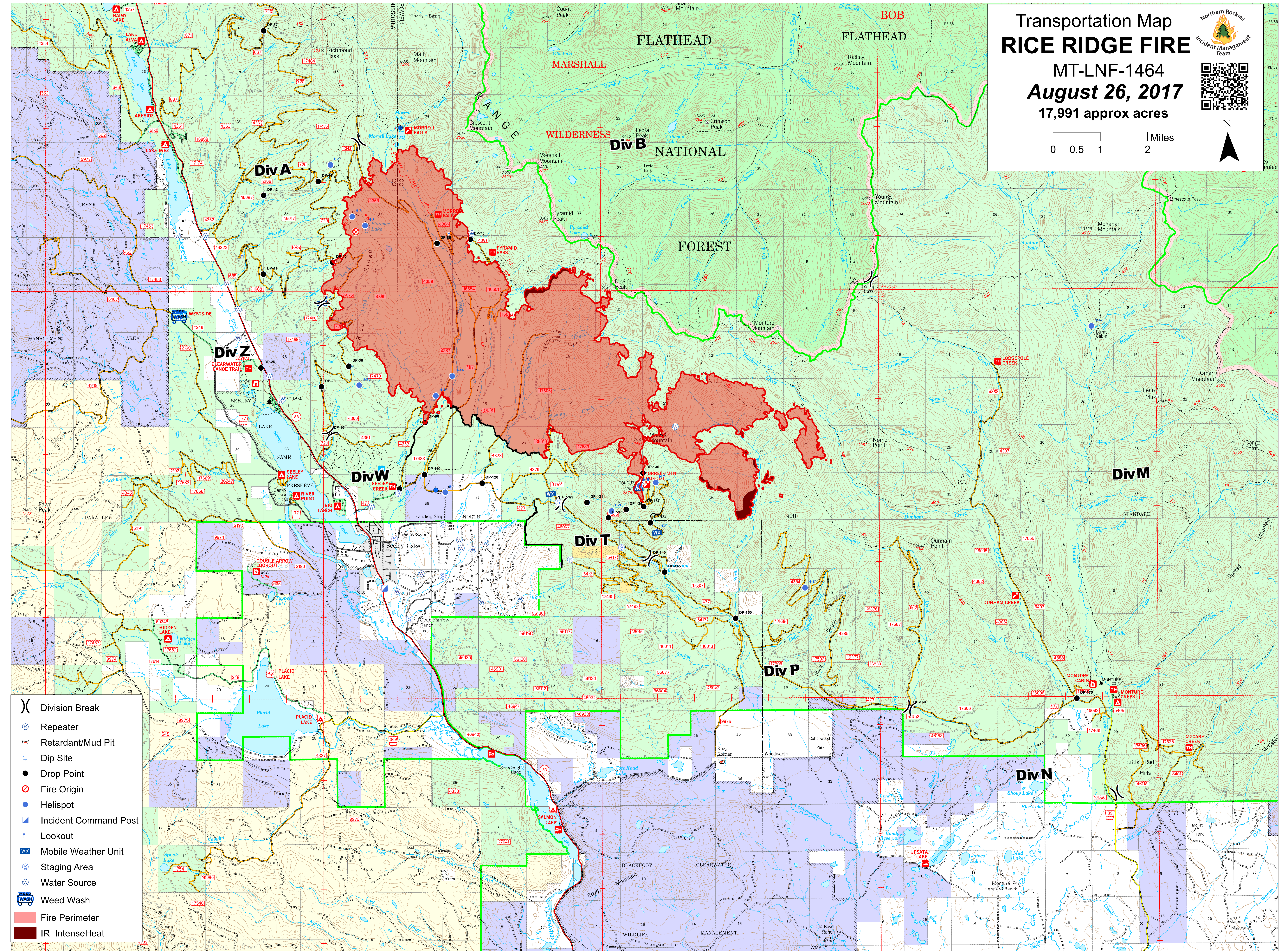
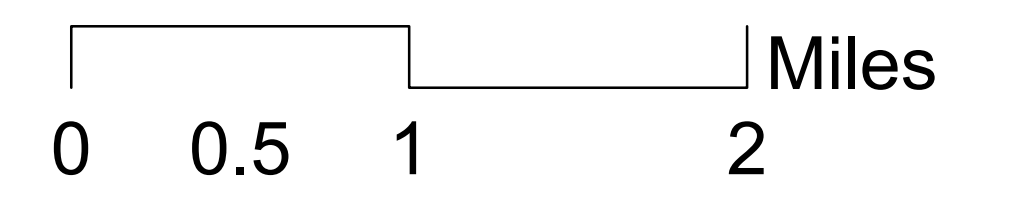


Transportation Map RICE RIDGE FIRE

MT-LNF-1464
August 26, 2017
17,991 approx acres



- (X) Division Break
- (R) Repeater
- (M) Retardant/Mud Pit
- (D) Dip Site
- (●) Drop Point
- (⊗) Fire Origin
- (●) Helispot
- (I) Incident Command Post
- (L) Lookout
- (WX) Mobile Weather Unit
- (S) Staging Area
- (W) Water Source
- (WASH) Weed Wash
- (Red outline) Fire Perimeter
- (Dark red outline) IR_IntenseHeat