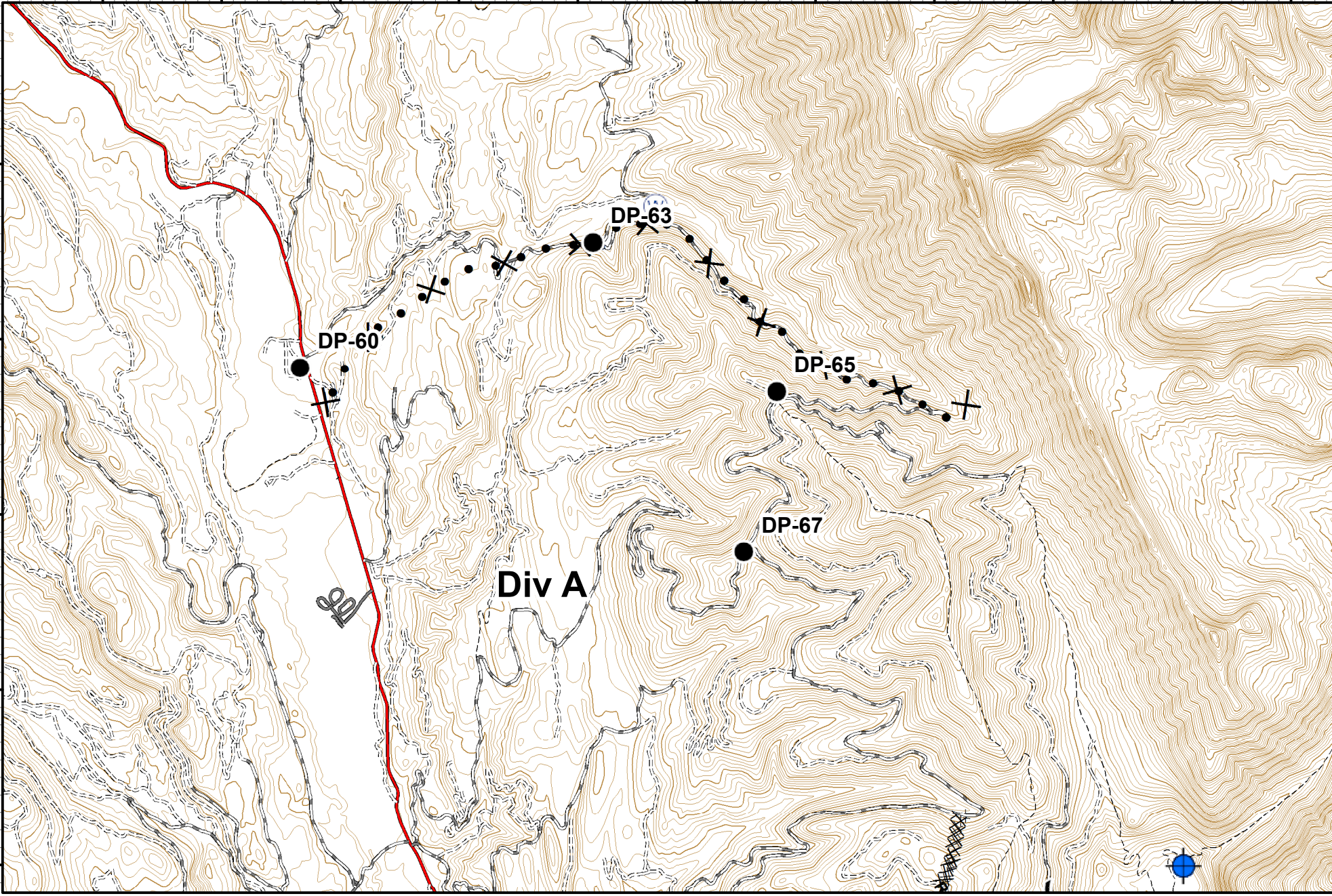


113°37'0"W 113°36'0"W 113°35'0"W 113°34'0"W 113°33'0"W 113°32'0"W 113°31'0"W 113°30'0"W 113°29'0"W 113°28'0"W 113°27'0"W

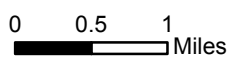
47°22'0"N  
47°21'0"N  
47°20'0"N  
47°19'0"N  
47°18'0"N

47°22'0"N  
47°21'0"N  
47°20'0"N  
47°19'0"N  
47°18'0"N



**Rice Ridge Fire Incident Action Plan**

MT-LNF-001464  
08/27/2017  
**MAP 1**  
Approx Acres 18,840



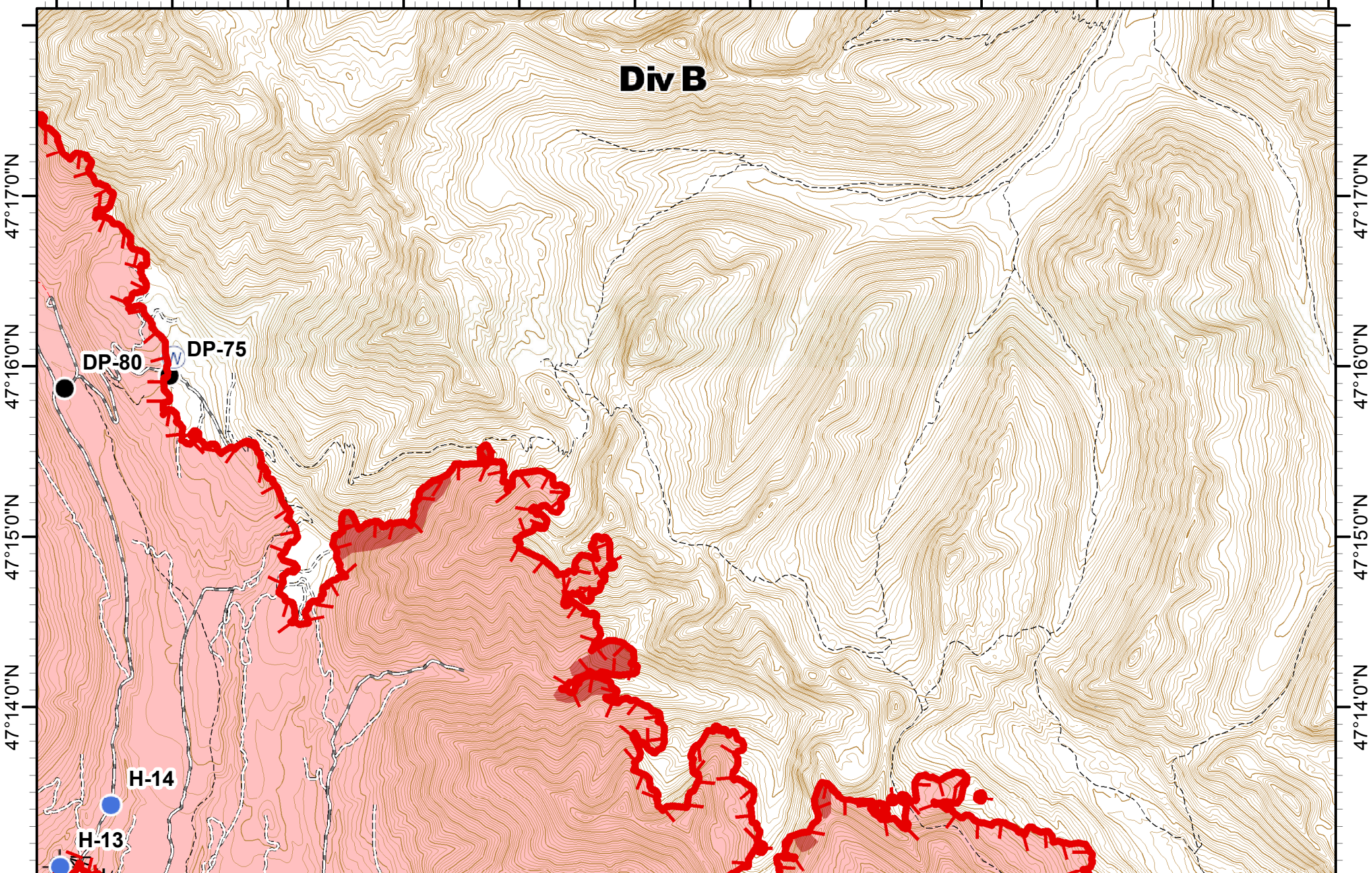
|              |            |                      |                        |                     |
|--------------|------------|----------------------|------------------------|---------------------|
| Dip Site     | Drop Point | Completed Dozer Line | Road as Completed Line | Proposed Dozer Line |
| Water Source |            |                      |                        |                     |







113°27'0"W 113°26'0"W 113°25'0"W 113°24'0"W 113°23'0"W 113°22'0"W 113°21'0"W 113°20'0"W 113°19'0"W 113°18'0"W 113°17'0"W 113°16'0"W

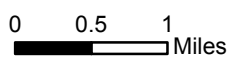


**Rice Ridge Fire Incident Action Plan**



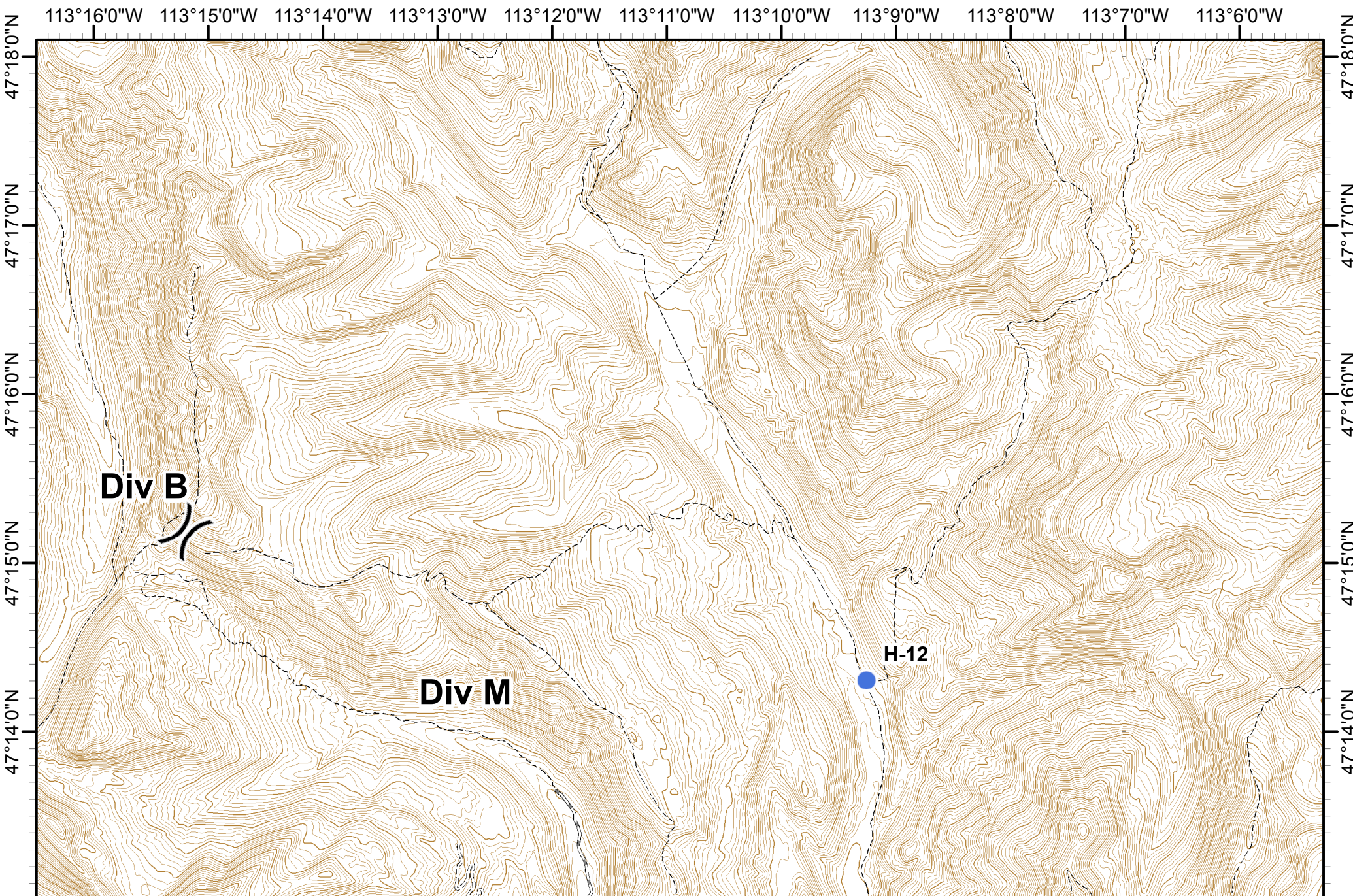
MT-LNF-001464  
08/27/2017  
Approx Acres 18,840

**MAP 3**



|          |              |                |                     |                      |                               |
|----------|--------------|----------------|---------------------|----------------------|-------------------------------|
| Dip Site | Drop Point   | Lookout        | Completed Hand Line | Line Break Completed | Wildfire Daily Fire Perimeter |
| Helispot | Water Source | IR_IntenseHeat |                     |                      |                               |

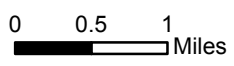




**Rice Ridge Fire  
Incident Action Plan**



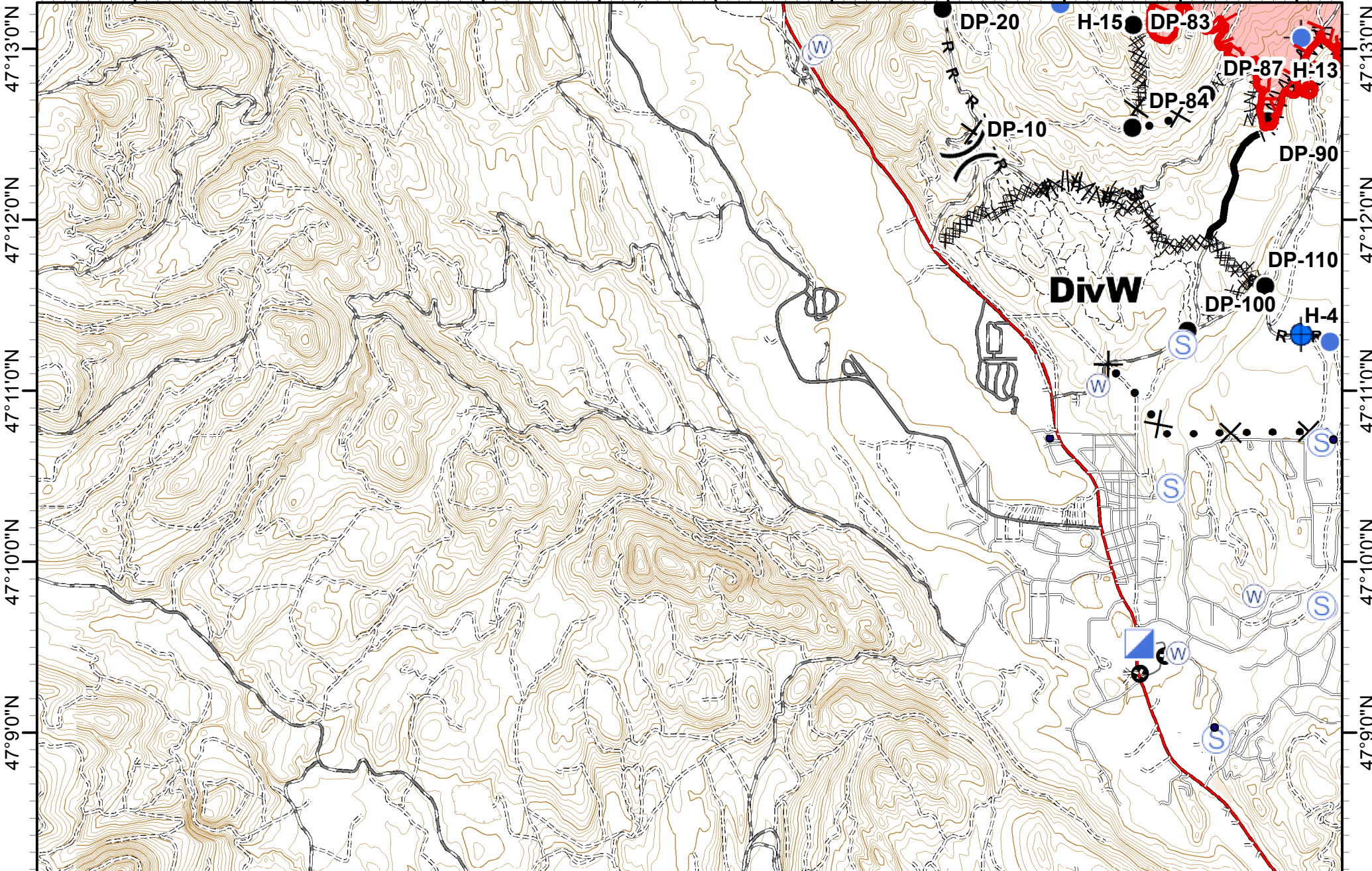
MT-LNF-001464 **MAP 4**  
08/27/2017  
Approx Acres 18,840



|  |                |  |          |
|--|----------------|--|----------|
|  | Division Break |  | Helispot |
|--|----------------|--|----------|



113°37'0"W 113°36'0"W 113°35'0"W 113°34'0"W 113°33'0"W 113°32'0"W 113°31'0"W 113°30'0"W 113°29'0"W 113°28'0"W 113°27'0"W



**Rice Ridge Fire Incident Action Plan**

MT-LNF-001464  
08/27/2017  
Approx Acres 18,840

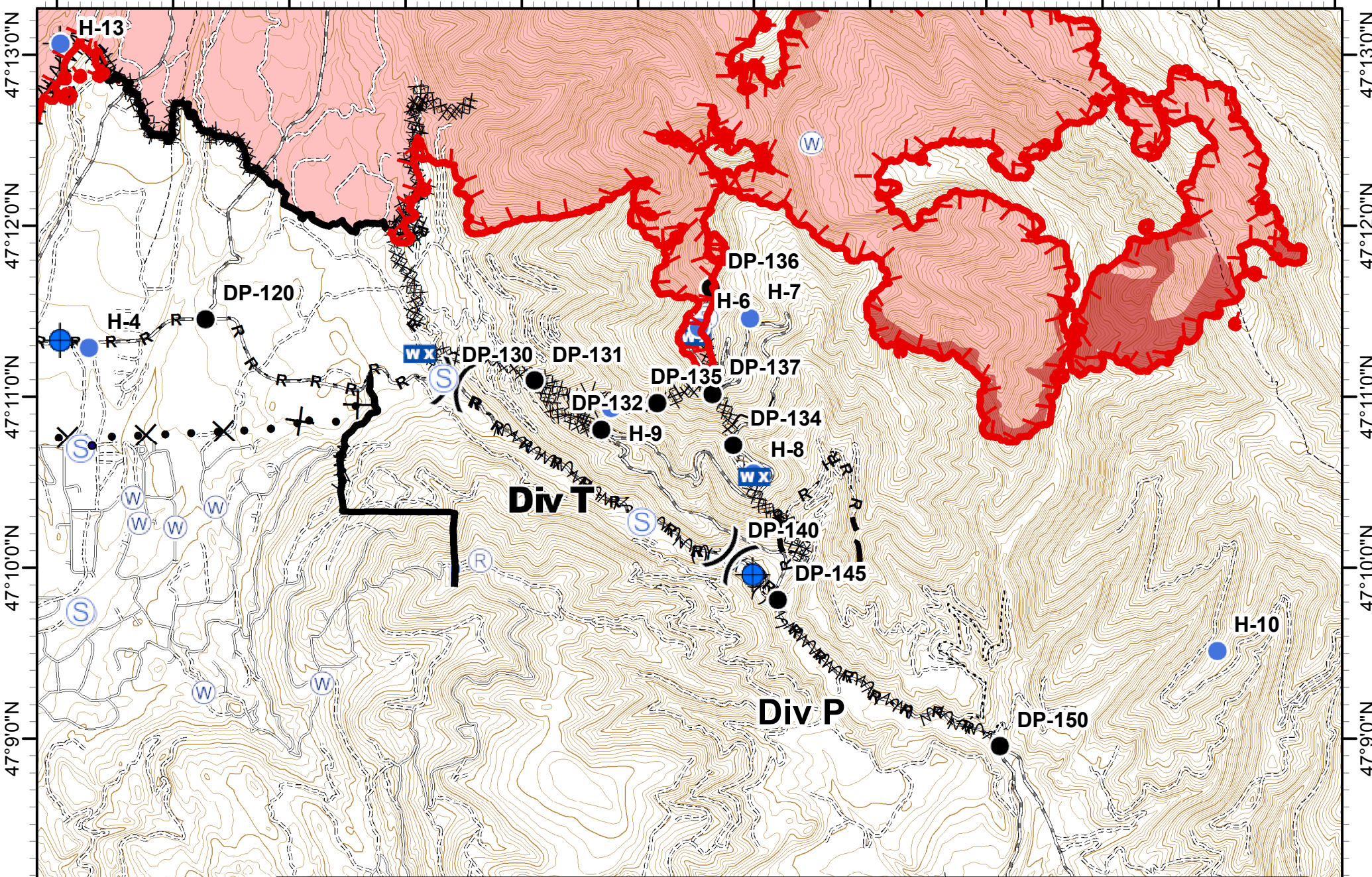
**MAP 5**

0 0.5 1 Miles

|  |                       |  |            |  |              |  |                      |  |                            |  |                                  |
|--|-----------------------|--|------------|--|--------------|--|----------------------|--|----------------------------|--|----------------------------------|
|  | Division Break        |  | Drop Point |  | Staging Area |  | Completed Dozer Line |  | R - Road as Completed Line |  | Proposed Dozer Line              |
|  | Dip Site              |  | Helispot   |  | Water Source |  | Completed Hand Line  |  | Line Break Completed       |  | Fire Break Planned or Incomplete |
|  | Incident Command Post |  |            |  |              |  |                      |  |                            |  | Other                            |
|  |                       |  |            |  |              |  |                      |  |                            |  | Wildfire Daily Fire Perimeter    |



113°27'0"W 113°26'0"W 113°25'0"W 113°24'0"W 113°23'0"W 113°22'0"W 113°21'0"W 113°20'0"W 113°19'0"W 113°18'0"W 113°17'0"W 113°16'0"W



**Rice Ridge Fire Incident Action Plan**

MT-LNF-001464  
08/27/2017  
Approx Acres 18,840

**MAP 6**

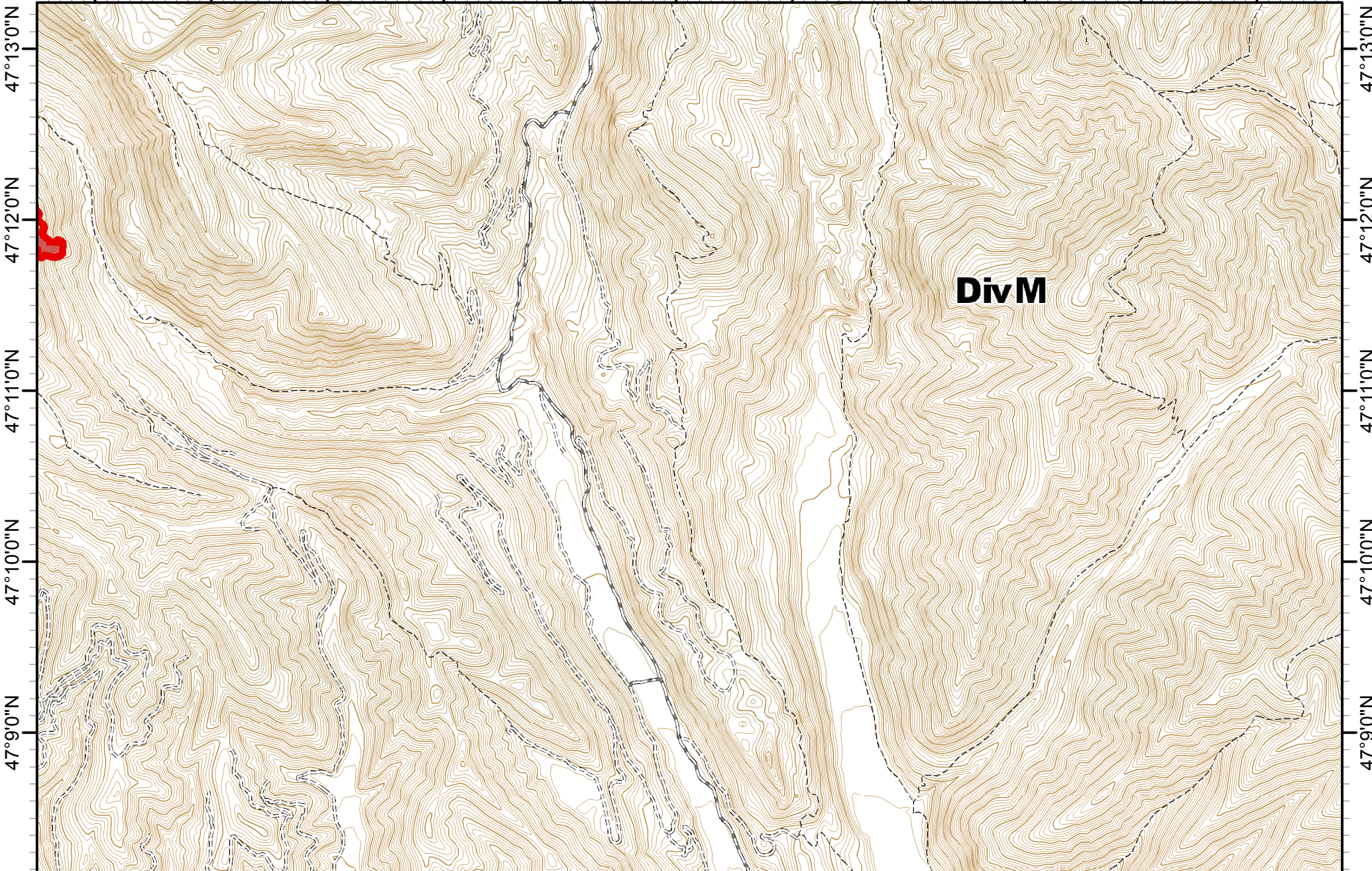
Northern Rockies Incident Management Team

0 0.5 1 Miles

|                |            |                     |                        |                      |                                  |
|----------------|------------|---------------------|------------------------|----------------------|----------------------------------|
| Division Break | Dip Site   | Lookout             | Completed Dozer Line   | Line Break Completed | Fire Break Planned or Incomplete |
| Repeater       | Drop Point | Mobile Weather Unit | Completed Hand Line    | Explosive Line       | Planned Fire Line                |
| Staging Area   | Helispot   | Water Source        | Road as Completed Line | Proposed Dozer Line  | Highlighted Manmade Feature      |
| IR_IntenseHeat |            |                     |                        |                      | Ridge/Geographic Feature         |
|                |            |                     |                        |                      | Wildfire Daily Fire Perimeter    |



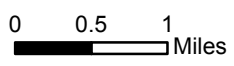
113°16'0"W 113°15'0"W 113°14'0"W 113°13'0"W 113°12'0"W 113°11'0"W 113°10'0"W 113°9'0"W 113°8'0"W 113°7'0"W 113°6'0"W


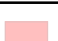


**Rice Ridge Fire**  
**Incident Action Plan**



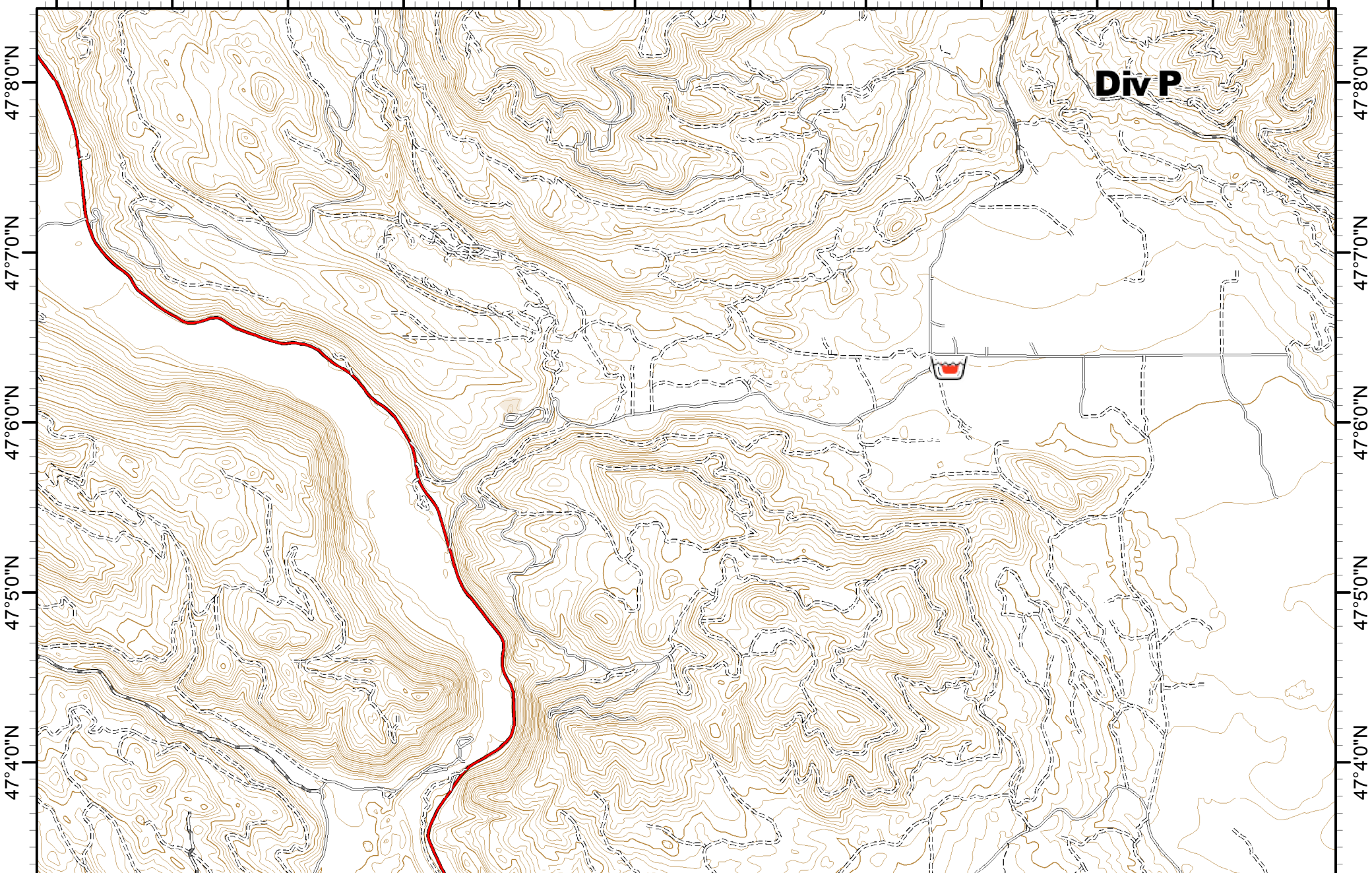
MT-LNF-001464  
 08/27/2017  
**MAP 7**  
 Approx Acres 18,840



|  |   |
|--|---|
|  IR_IntenseHeat |  Wildfire Daily Fire Perimeter |
|--|---|



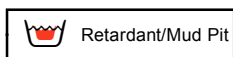
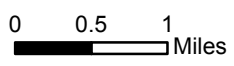
113°27'0"W 113°26'0"W 113°25'0"W 113°24'0"W 113°23'0"W 113°22'0"W 113°21'0"W 113°20'0"W 113°19'0"W 113°18'0"W 113°17'0"W 113°16'0"W



**Rice Ridge Fire**  
**Incident Action Plan**

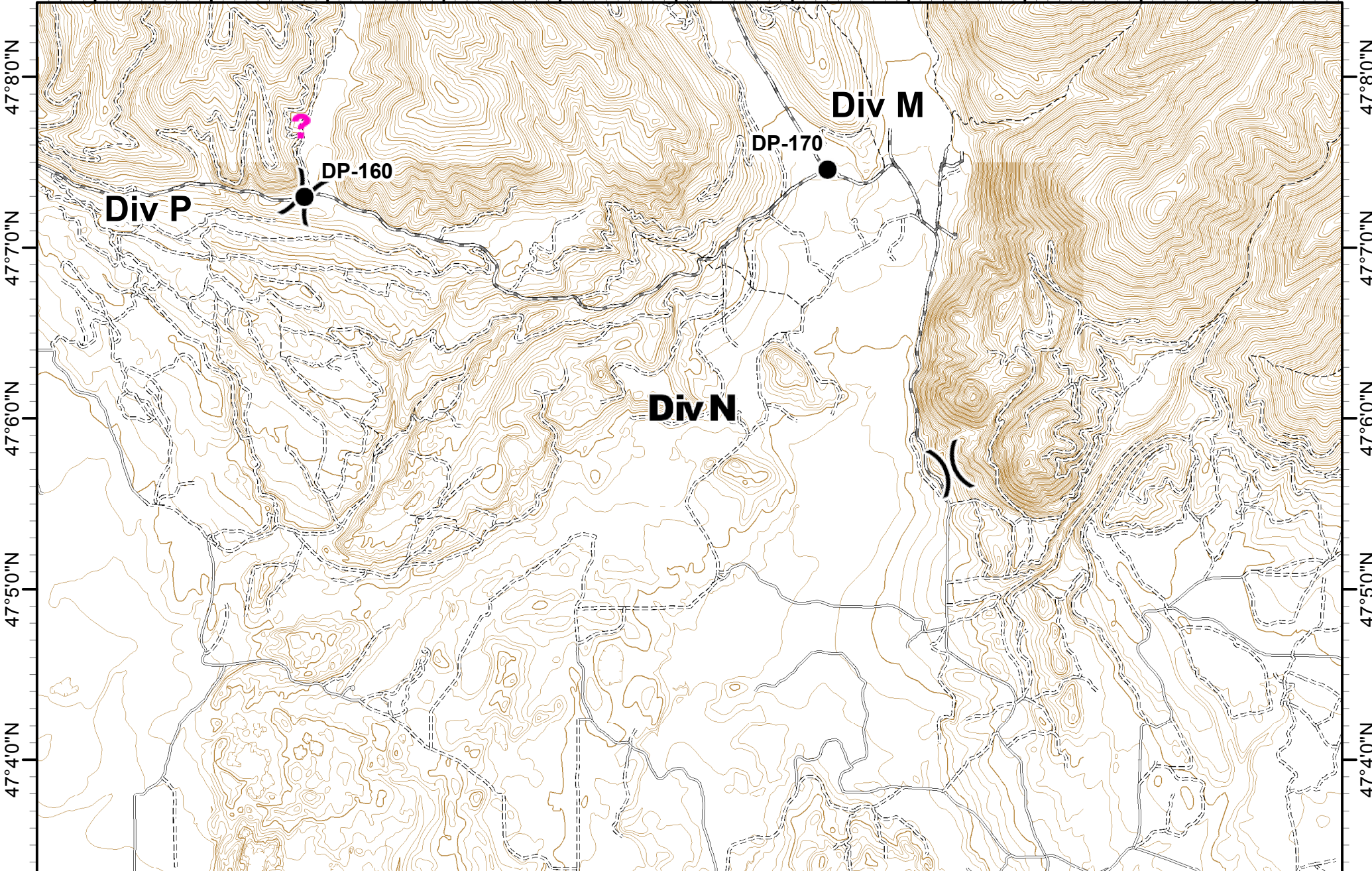


MT-LNF-001464 **MAP 8**  
 08/27/2017  
 Approx Acres 18,840





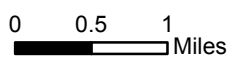
113°16'0"W 113°15'0"W 113°14'0"W 113°13'0"W 113°12'0"W 113°11'0"W 113°10'0"W 113°9'0"W 113°8'0"W 113°7'0"W 113°6'0"W






**Rice Ridge Fire  
Incident Action Plan**



MT-LNF-001464 **MAP 9**  
08/27/2017  
Approx Acres 18,840



|   |                |   |            |   |       |
|---|----------------|---|------------|---|-------|
|  | Division Break |  | Drop Point |  | Other |
|---|----------------|---|------------|---|-------|