

Rice Ridge Fire

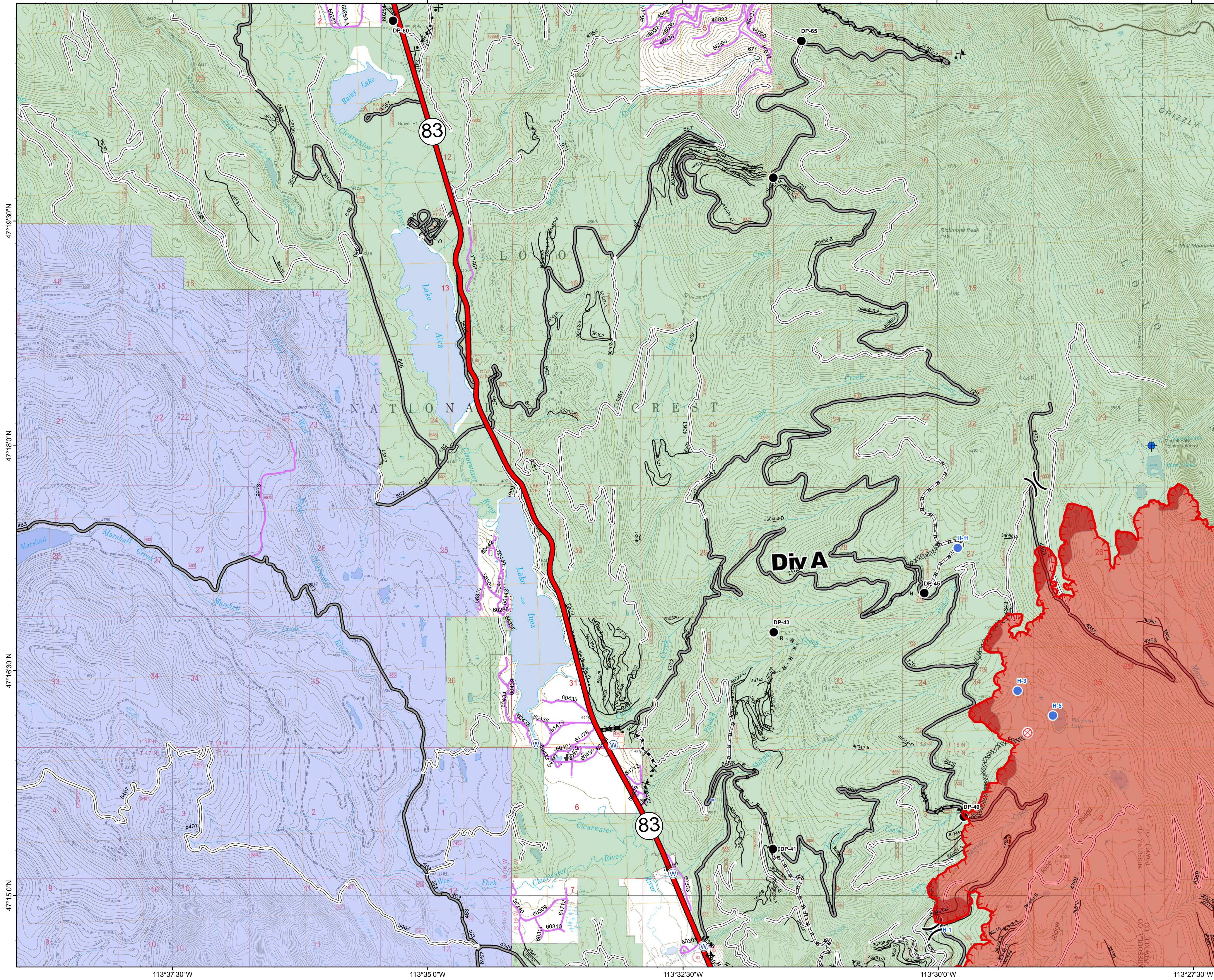
MT-LNF-001464

DIV A

Operations Map

August 27, 2017

22,405 Acres (IR Flight 8/26/17 2221)



- () Division Break
- Dip Site
- Drop Point
- ⊙ Fire Origin
- Helispot
- ⌘ Lookout
- ☒ Mobile Weather Unit
- ⊙ Staging Area
- ⊙ Water Source
- Uncontrolled Fire Edge
- H · H · Completed Hand Line
- R · R · Road as Completed Line
- XXXX Completed Dozer Line
- X · X · Proposed Dozer Line
- Forest Service Undetermined
- Interstate and Highways
- Forest Service System Roads
- 1 - BASIC(CLOSED); 2 - HIGH CLEARANCE
- 3 - PASSENGER CARS; 4 - MODERATE COMFORT; 5 - HIGH COMFORT
- Private Roads
- County
- Plum Creek Roads
- Short Term Spec Roads
- Fire Perimeter
- IR_IntenseHeat
- Montana Fish, Wildlife, and Parks
- US Forest Service

Northern Rockies
Incident Management
Team

