

# Rice Ridge Fire

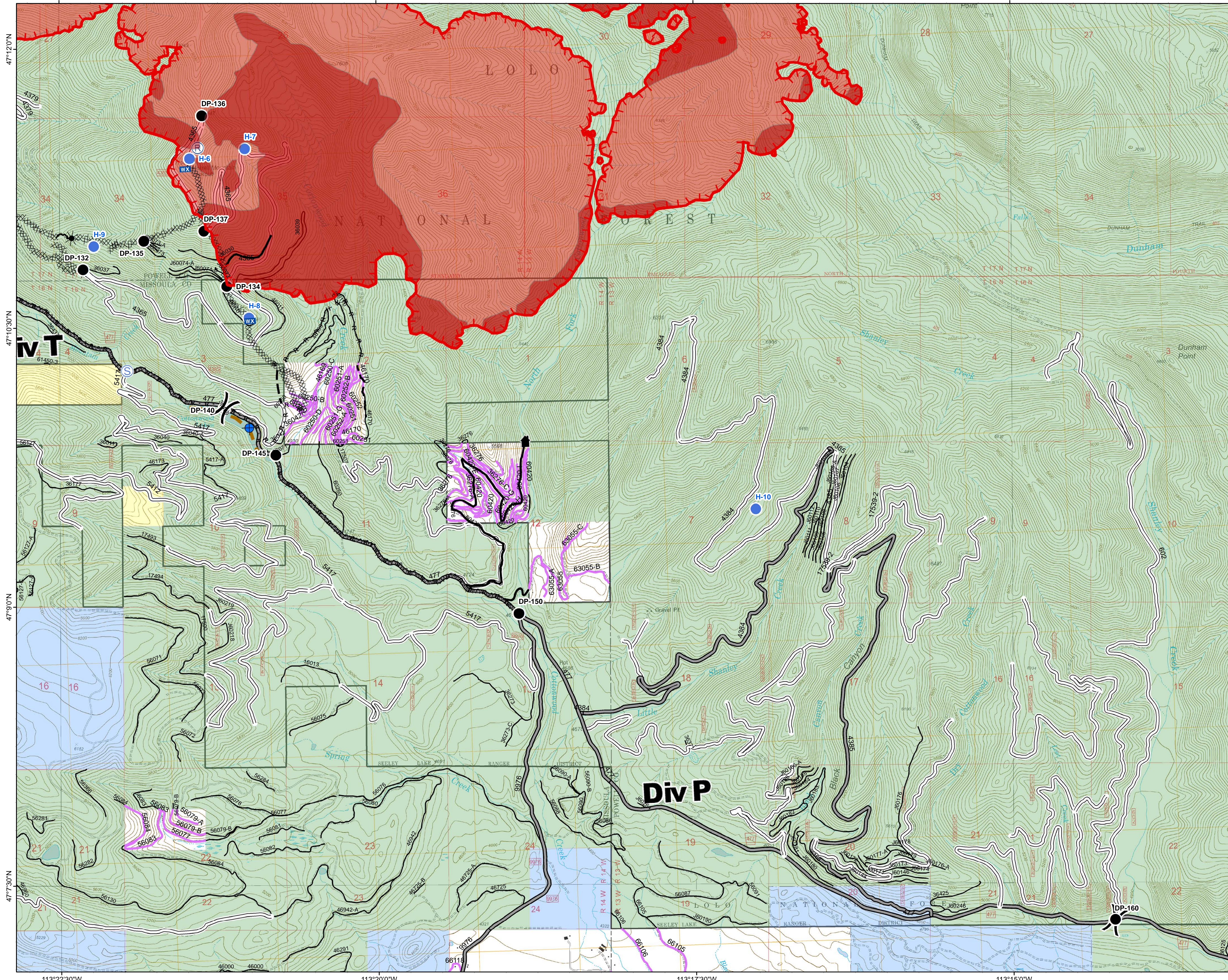
MT-LNF-001464

DIV P

Operations Map

August 27, 2017

22,405 Acres (IR Flight 8/26/17 2221)



- Division Break
- Repeater
- Dip Site
- Drop Point
- Helispot
- Mobile Weather Unit
- Staging Area
- Uncontrolled Fire Edge
- Completed Hand Line
- Road as Completed Line
- Completed Dozer Line
- Explosive Line
- Fire Break Planned or Incomplete
- Planned Fire Line
- Ridge/Geographic Feature
- Forest Service Undetermined
- Other Road
- Forest Service System Roads
- 1 - BASIC(CLOSED); 2 - HIGH CLEARANCE
- 3 - PASSENGER CARS; 4 - MODERATE COMFORT; 5 - HIGH COMFORT
- Private Roads
- Fire Perimeter
- IR\_IntenseHeat
- Montana State Trust Lands
- US Bureau of Land Management
- US Forest Service

Northern Rockies  
Incident Management  
Team

0 0.3 0.6 1.2 Miles