

# Rice Ridge Fire

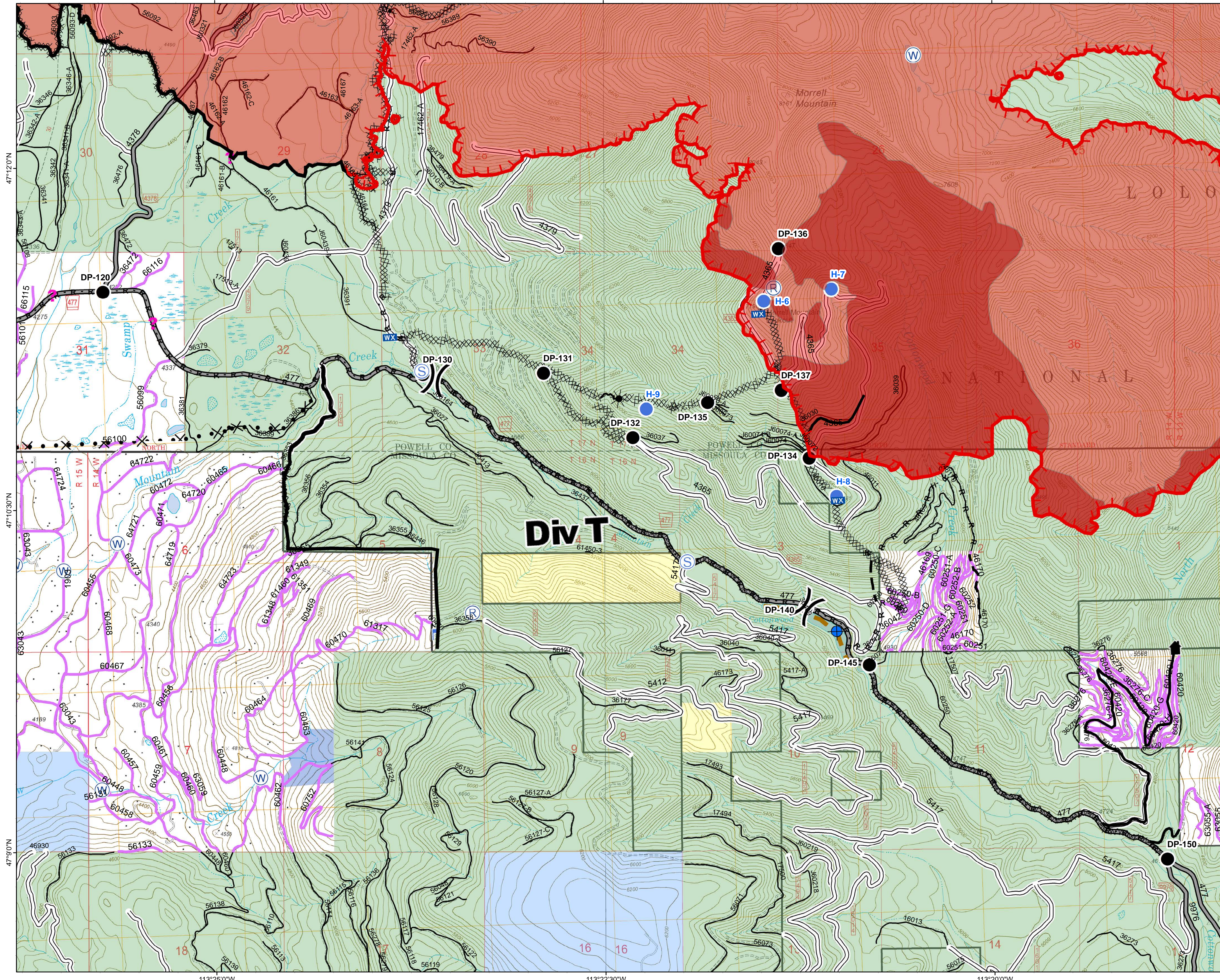
MT-LNF-001464

DIV T

## Operations Map

### August 27, 2017

22,405 Acres (IR Flight 8/26/17 2221)



- ( ) Division Break
- (R) Repeater
- (D) Dip Site
- (●) Drop Point
- (●) Helispot
- (F) Lookout
- (WX) Mobile Weather Unit
- (S) Staging Area
- (W) Water Source
- (\*) Other
- Completed Line
- Uncontrolled Fire Edge
- H · H · Completed Hand Line
- R · R · Road as Completed Line
- XXXXX Completed Dozer Line
- \* \* \* Explosive Line
- X · X · Proposed Dozer Line
- ~ ~ ~ Fire Break Planned or Incomplete
- Planned Fire Line
- · · Highlighted Manmade Feature
- Ridge/Geographic Feature
- Forest Service Undetermined
- Other Road
- Forest Service System Roads
- 1 - BASIC(CLOSED); 2 - HIGH CLEARANCE
- 3 - PASSENGER CARS; 4 - MODERATE COMFORT; 5 - HIGH COMFORT
- Private Roads
- Other Forest Roads
- Fire Perimeter
- IR\_IntenseHeat
- County Government
- Montana State Trust Lands
- US Bureau of Land Management
- US Forest Service

Northern Rockies  
Incident Management  
Team

0 0.25 0.5 1 Miles